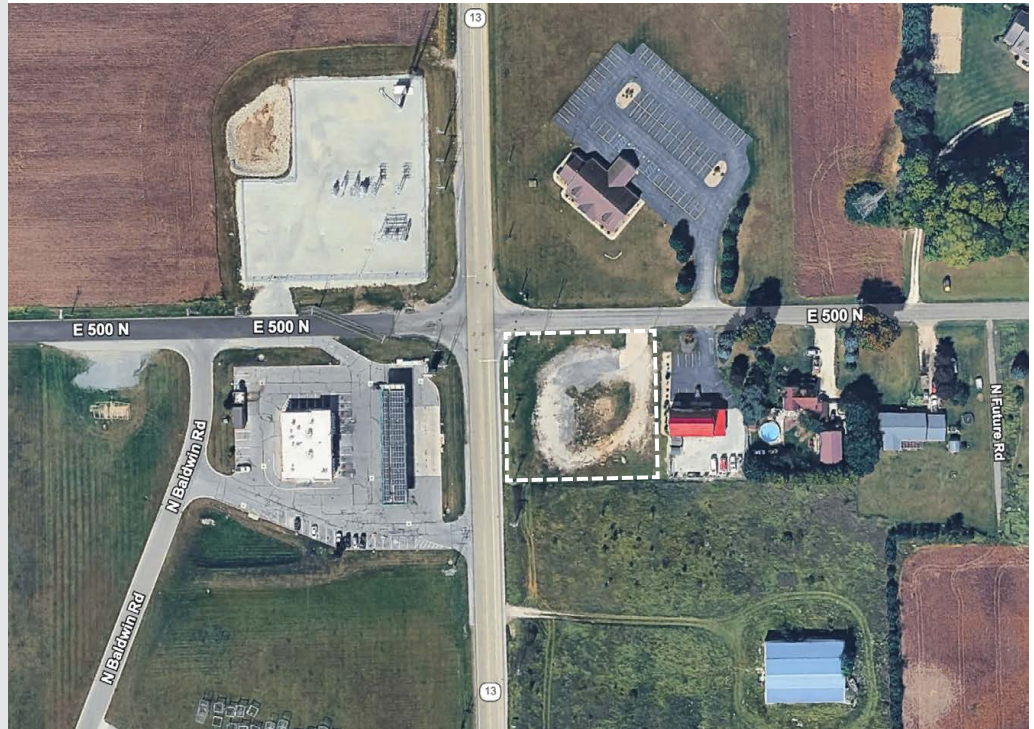


**\$500,000****PROPERTY HIGHLIGHTS****Sale Price:** \$500,000**Land:** 1.01 Acres**Zoning:** Commercial**Utilities:** Well & Septic**Taxes:** \$1,628.17**8049 E 500 N**  
**Leesburg, IN 46538****PROPERTY DETAILS**

Rare commercial development opportunity just South of North Webster at 8049 E 500 N in Leesburg, IN. This vacant parcel offers a prime blank slate for a wide range of commercial uses in an area with limited available land. With excellent visibility, convenient access, and proximity to established businesses and growing residential communities, the site is well-positioned for future development or investment. Whether you're a developer, business owner, or investor looking to secure land in a high-potential location, this property presents a unique chance to capitalize on Leesburg's continued growth and demand for commercial space. The lot has existing well and septic but will likely need a new septic system.

**Make contact.**

Brycen Wrigley  
Broker  
Cell: 574-849-7221  
Direct: 574-501-3201  
[brycen@endeavour-grp.com](mailto:brycen@endeavour-grp.com)

**Endeavour Commercial**  
22047 Endeavour Dr., Elkhart, IN 46514  
P 574-292-7995  
[endeavour-grp.com](http://endeavour-grp.com)



**ENDEAVOUR**  
COMMERCIAL

COMMERCIAL LAND FOR SALE



### Make contact.

Brycen Wrigley  
Broker  
Cell: 574-849-7221  
Direct: 574-501-3201  
[brycen@endeavour-grp.com](mailto:brycen@endeavour-grp.com)

**Endeavour Commercial**  
22047 Endeavour Dr., Elkhart, IN 46514  
P 574-292-7995  
[endeavour-grp.com](http://endeavour-grp.com)

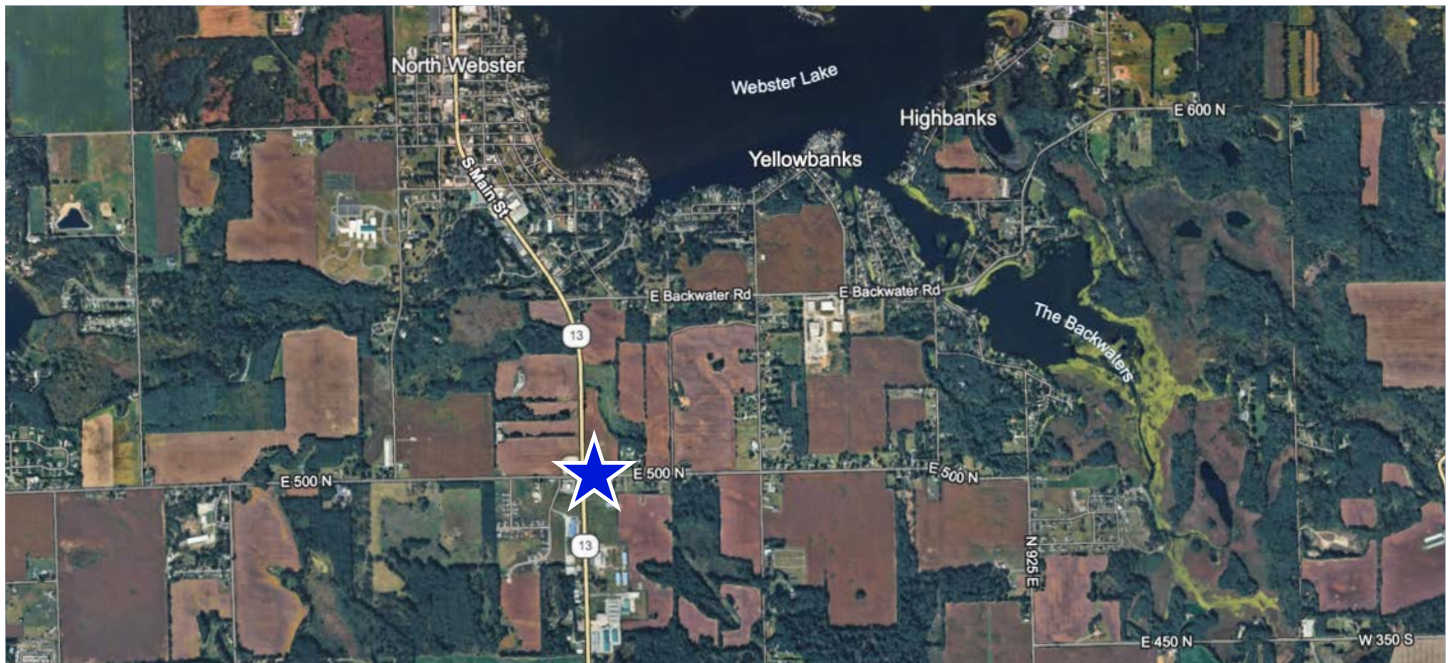
The information contained herein was obtained from sources believed to be reliable. We cannot be responsible for errors, omissions, prior sale or lease, change of price or withdrawal from the market without notice. No liability of any kind is to be imposed on the broker herein.





**ENDEAVOUR**  
COMMERCIAL

COMMERCIAL LAND FOR SALE



### Make contact.

Brycen Wrigley  
Broker  
Cell: 574-849-7221  
Direct: 574-501-3201  
[brycen@endeavour-grp.com](mailto:brycen@endeavour-grp.com)

**Endeavour Commercial**  
22047 Endeavour Dr., Elkhart, IN 46514  
P 574-292-7995  
[endeavour-grp.com](http://endeavour-grp.com)