

# G4Derm™ Plus

## Biomimetic Matrix



### Powered by Self-Assembling Peptides (SAP) to revitalize stalled, complex wounds

**G4Derm™ Plus** is a viscoadpative Biomimetic Matrix specifically designed to form a 3D scaffold that mimics the ECM of native skin to enhance granulation tissue formation and help close complex wounds. The synthetic peptides are engineered to self-assemble into an ECM-like structure for tissue regrowth while providing broad-spectrum antibacterial protection.

#### Supports Tissue Regrowth



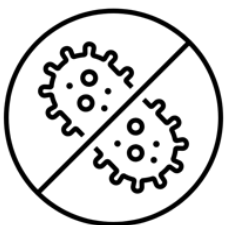
The biomimetic matrix gradually resorbs and integrates into the host tissue<sup>1</sup> to revitalize stalled wounds by supporting granulation tissue formation and revascularization<sup>2,3</sup>. The 3D scaffold consists of amino acids, including Arginine, Lysine, and Proline, known to be involved in wound healing<sup>4</sup>, immunomodulation<sup>5</sup>, and collagen synthesis<sup>6</sup>.

#### Eliminates Dead Space



**G4Derm™ Plus** fully conforms to irregularly shaped and hard-to-access wounds, including tunneling and undermined regions<sup>7,8</sup>. The viscoadpative properties of the biomimetic matrix enable efficient coverage of large and deep wound areas<sup>9</sup>, eliminating dead space.

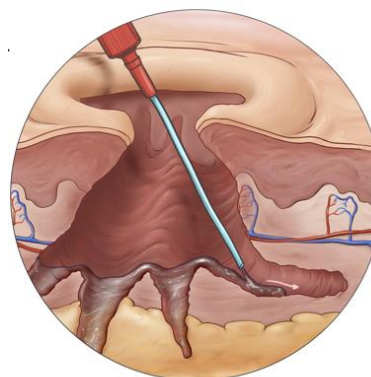
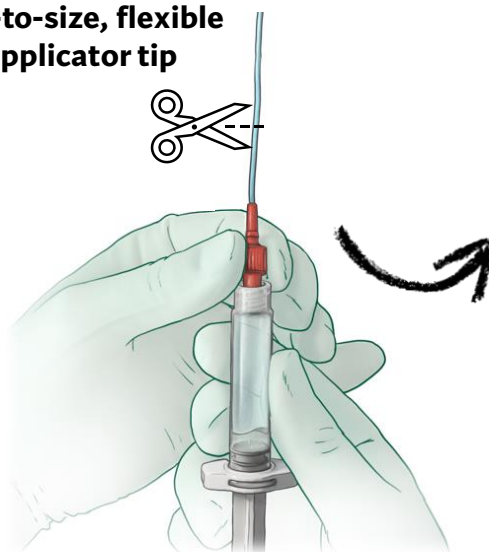
#### Offers Antibacterial Protection



The cationic peptides in **G4Derm™ Plus** provide inherent broad-spectrum antibacterial protection<sup>1</sup> to manage bioburden<sup>10,11</sup> and prevent biofilm reformation<sup>11,12</sup> while maintaining an environment conducive to wound healing<sup>1</sup>.

# G4Derm™ Plus system

Cut-to-size, flexible  
applicator tip



Easy application in hard-  
to-access wounds

## Indications for Use

**G4Derm™ Plus** is to be used under the supervision of healthcare professionals for the local management of partial- and full-thickness wounds, including:

- Diabetic ulcers
- Pressure ulcers
- Lower extremity ulcers of venous, arterial, or mixed etiology
- Surgical wounds
- First-degree and partial-thickness burns

## Ordering Information

DoD Ref. No.	Description	Wound Coverage	Qty
DLIN4058	G4Derm™ Plus 3D Peptide Matrix, 2mL pre-filled syringe w/ applicator tip	20cm <sup>2</sup>	1
DLIN4060	Volume Discount – G4Derm™ Plus 3D Peptide Matrix, 2mL pre-filled syringe w/ applicator tip	20cm <sup>2</sup>	4

\*Coverage to the thickness of a dime (approximately 1 mm)

## References

1. FDA 510k submission package; 2. Data on File (TRS1502W; GM-2101); 3. Regulski M. Journal of Wound Care. 2025; 4. Schneider KL et al. Adv Skin Wound Care. 2019; 5. Zhang et al. Nano Letters. 2024; 6. Karna E et al. Cell Mol Life Sci. 2020; 7. Data on File (VV-0051). 8. Frykberg et al. Wounds. 2025; 9. Sara Rose-Sauld, Jennifer Skolnik, Adam Landsman. Clinical applications of a novel, Food and Drug Administration -approved biomimetic matrix in refractory diabetic foot ulcers: An observational case series analysis. Journal of Clinical and Translational Research 2025, 11(2), 87–93. 10. Data on File (RR-0004); 11. Tellechea A et al. Wound Repair and Regeneration. 2025.; 12. Data on File (RR-0003).

### LEARN MORE:

Contact Spartan Medical Inc.

(888) 240-8091

CS@SPARTANMEDICAL.COM



### SPARTAN MEDICAL INC.

1445 Research Blvd, Suite 520,  
Rockville, MD 20850

[spartanmedical.com](http://spartanmedical.com)

UEI: LCJBD88KQ8G3

DUNS: 807438341 | CAGE:65VT5

