

SYNTHETIC BONE GRAFT - DENTAL



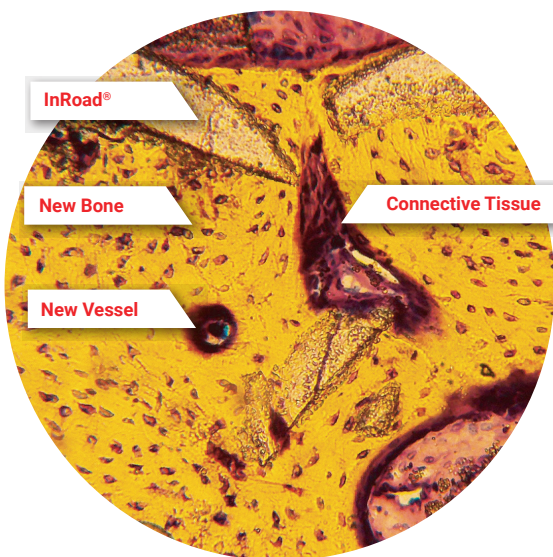
SPARTAN[®]
M E D I C A L

in|road[®]

DENTAL SYNTHETIC BONE GRAFT

**A patient-first,
surgeon-friendly
bone graft**

InRoad[®] emulates the biological microenvironment of bone without donor risk and moderates elaborate clinical steps without complication.
It's the bone graft of the future.



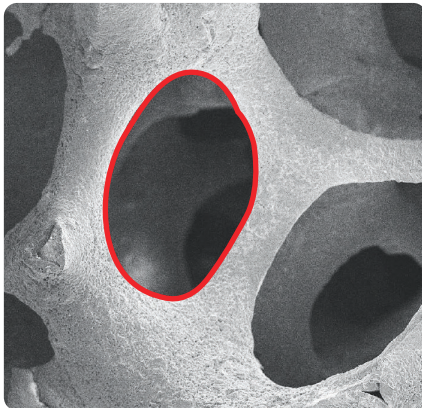
Features & Benefits

- 100% synthetic; no risk of disease transmission or donor site morbidity
- No immunogenic concerns
- Interconnected multi-porous structure promotes wettability
- Trabecular-like structure facilitates cell migration and bone regeneration
- Easy to fill bony defects by the nature of granule type bone graft

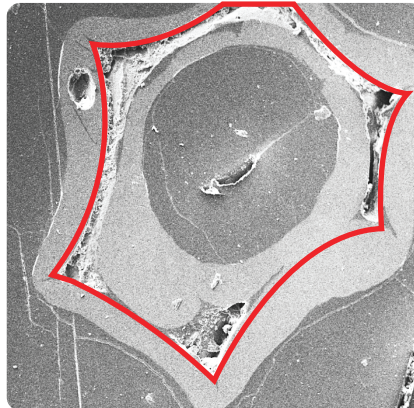


OSTEOGENE[™]

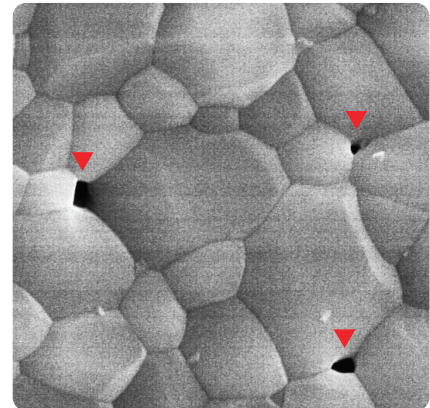
Interconnected Multi-porous Structure



■ Primary Pores



■ Secondary Channel



■ Tertiary Holes

InRoad® Dental Synthetic Bone Graft & Common Uses

CLIN	VOLUME	GRANULE SIZE
CLIN01207	0.5 cc	0.3 ~ 1.0 mm
CLIN01208	1.0 cc	
CLIN01209	2.0 cc	
CLIN01210	3.0 cc	
CLIN01211	0.5 cc	0.8 ~ 1.8 mm
CLIN01212	1.0 cc	
CLIN01213	2.0 cc	
CLIN01214	3.0 cc	

NOTE: Composition: HA 90 ± 5% / β -TCP 10 ± 5%



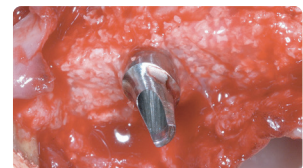
Extraction sites



Alveolar bony defects



Sinus floor elevations



Other bone defects



© 2022 Osteogene Tech Corp. All rights reserved.

InRoad® represents an FDA-cleared (K202675) synthetic dental bone graft intended for bone defect surgical procedures as outlined in the Instructions for Use. InRoad® and other trademarks and logos associated with InRoad® are exclusively owned by Osteogene Tech Corp and its related and affiliated companies. The use or publishing of the mark InRoad® is limited to the licensees of Osteogene Tech Corp, which is the sole and exclusive manufacturer and supplier of the InRoad® products. The InRoad® products must be used by licensed professionals (Rx Only) and sold or distributed either directly to them or through authorized distributors of Osteogene Tech Corp. Osteogene Tech Corp is not responsible or liable for any outcome resulting from any failure to strictly comply with the Instructions for Use. Results may vary. More information is available at www.osteogene.com.

IR001-REV-A 02/23

LEARN MORE:

Contact Spartan Medical Inc.



(888) 240-8091



CS@SPARTANMEDICAL.COM



SPARTAN MEDICAL INC.

1445 Research Blvd, Suite 520,
Rockville, MD 20850

spartanmedical.com

UEI: LCJBD88KQ8G3

DUNS: 807438341 | CAGE:65VT5

