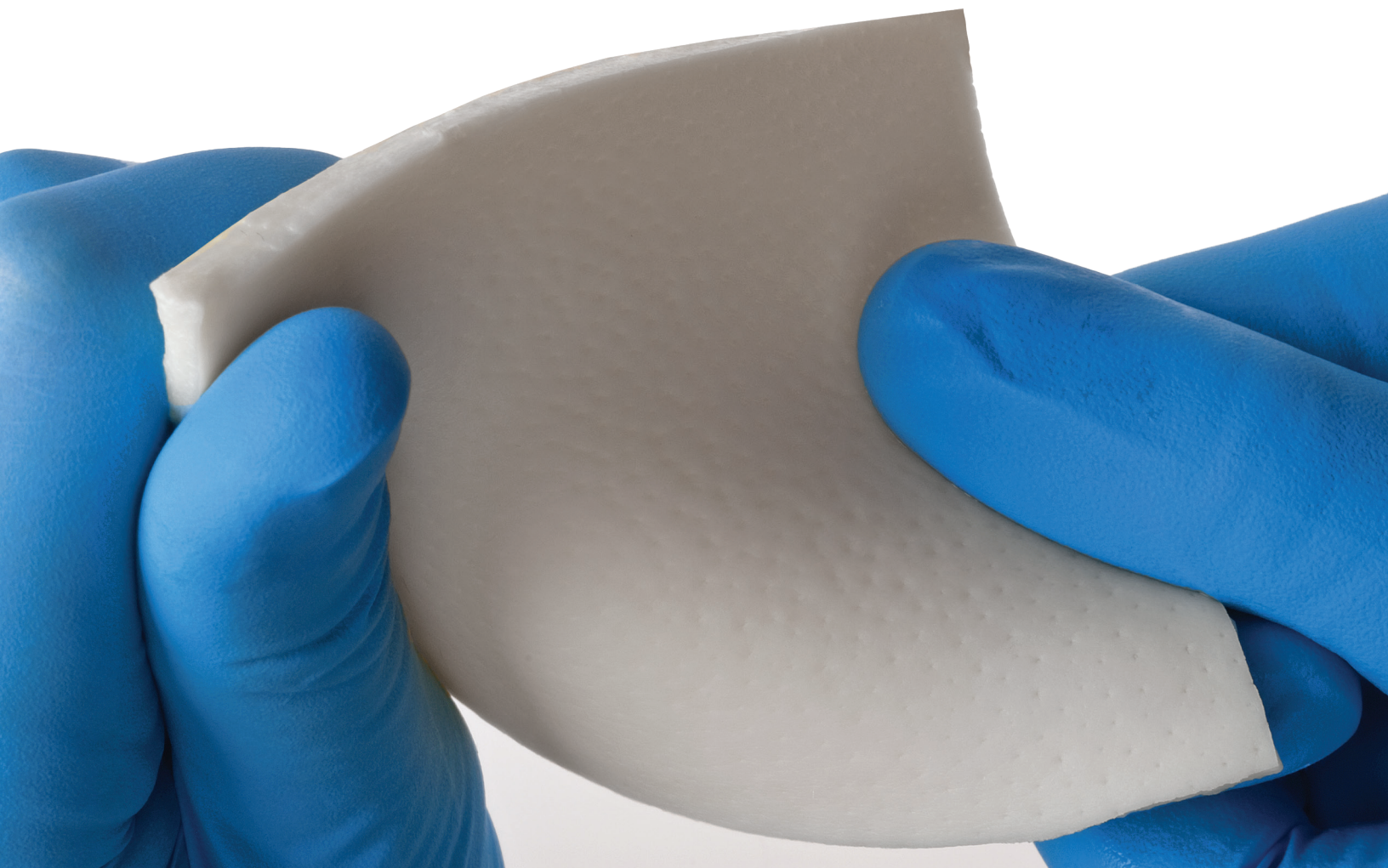


# AlloMend<sup>®</sup>

## ACELLULAR DERMAL MATRIX

---

For Demanding Soft Tissue  
Repair and Reconstruction



DISTRIBUTED BY:



**SPARTAN<sup>®</sup>**  
M E D I C A L

MANUFACTURED BY:



## ALLOMEND® ACELLULAR DERMAL MATRIX

AlloMend Acellular Dermal Matrix (ADM) provides a flexible and reliable allograft that has been used by surgeons for years for demanding soft tissue applications.

Human acellular matrices are used in a broad range of surgical procedures, including:

- Breast reconstruction<sup>1</sup>
- Pelvic organ prolapse<sup>2</sup>
- Tendon augmentation<sup>3</sup>
- Rotator cuff repair<sup>4</sup>
- Superior capsular reconstruction<sup>5</sup>
- Fat pad replacement<sup>6</sup>
- Hernia repair<sup>2</sup>
- Bicep tendon repair<sup>7</sup>

## ACELLULAR REGENERATION

Through a proprietary process, viable cells and cellular elements that are capable of triggering an immunogenic response are removed from donated human dermal tissue, leaving behind a collagen elastin matrix. Upon transplantation, the body's own cells infiltrate and repopulate this three-dimensional scaffold to begin the revascularization and remodeling processes.

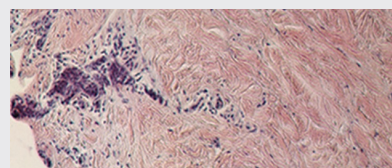
Acellular allograft matrices, unlike synthetic materials or xenografts, are recognized as human tissue by the recipient for graft incorporation, minimizing the risk of inflammation<sup>8</sup> or rejection<sup>8</sup>. AlloMend has been shown to incorporate into the surgical site and demonstrate blood vessel infiltration.<sup>10</sup>

<b>ALLOGRAFT</b>	Minimizes risk of rejection
<b>STERILE</b>	Minimizes risk of infection
<b>ACELLULAR</b>	Minimizes risk of immunologic response
<b>BIOCOMPATIBLE</b>	Minimizes risk of inflammation

## DERMATRUE™ DECELLULARIZATION PROCESS

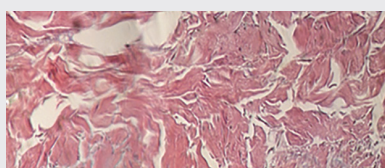
AlloMend ADM is created using AlloSource's proprietary DermaTrue Decellularization Process to remove cellular debris (including DNA, RNA, proteins and antigens), without the use of harsh detergents or enzymes which can leave residuals in the tissue. The dermal tissue is rendered acellular, contributing to a low immunologic response<sup>10</sup>, while retaining growth factors and maintaining the morphological collagen structure.<sup>11</sup>

*H&E (hematoxylin and eosin) stain review of "before and after" decellularization process.*



**BEFORE**

Noticeable large number of well-defined cell nuclei (purple)



**AFTER**

Absence of identifiable defined nuclei; no viable cells present

## HIGH STRENGTH

AlloMend ADM exceeds the tensile strength of leading acellular dermal matrices for more assurance in surgical repair of integumental tissue.<sup>12</sup>

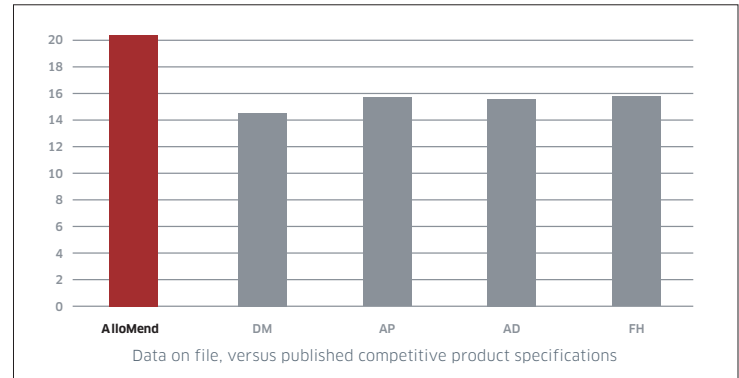
Ultimate tensile strength is a standard testing methodology to measure the force needed to stretch and break a biomaterial.

AlloMend ADM also demonstrates high suture retention strength, often exceeding the inherent strength of the sutures themselves. AlloMend Ultra-Thick ADM (from 3.0-4.0 mm), can be expected to have a suture pullout strength of between 161 and 270 N. This helps ensure secure placement during the most demanding soft tissue repair.<sup>13</sup>

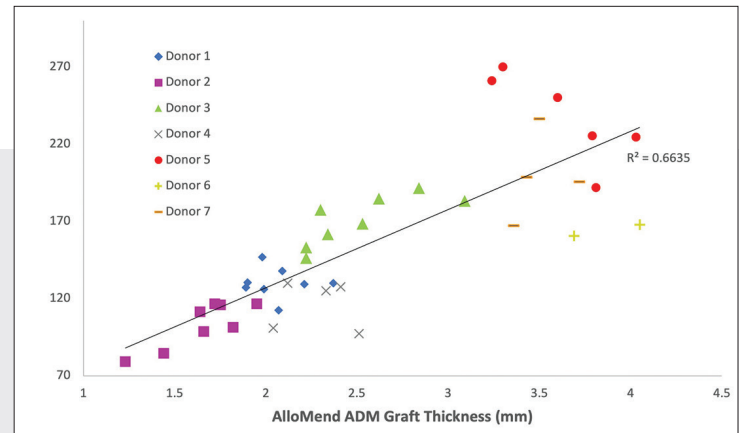
## A CLOSER LOOK AT ALLOMEND ADM

- **FLEXIBLE AND PLIABLE MATERIAL**  
optimal handling characteristics enable precision placement
- **AVAILABLE IN A VARIETY OF THICKNESSES, SHAPES AND SIZES**  
suits a wide range of surgical applications
- **MESHED OPTIONS**  
for applications requiring fluid egress or increased graft surface area for incorporation<sup>14</sup>
- **PRECISION PROCESSING**  
consistency of product through proprietary splitting and die-cutting technology
- **TERMINALLY STERILIZED TO A STERILITY ASSURANCE LEVEL (SAL) OF 10<sup>-6</sup>, WITH E-BEAM TECHNOLOGY**  
minimizes infection risk, while avoiding damaging tissue
- **TWO-YEAR SHELF LIFE AT AMBIENT TEMPERATURE**  
no special handling or storage required
- **RETAINS GROWTH FACTORS**  
known to contribute to the body's healing response<sup>2</sup>
- **PACKAGED MOIST IN STERILE WATER**  
immediately ready to use, no need to wait for product to rehydrate

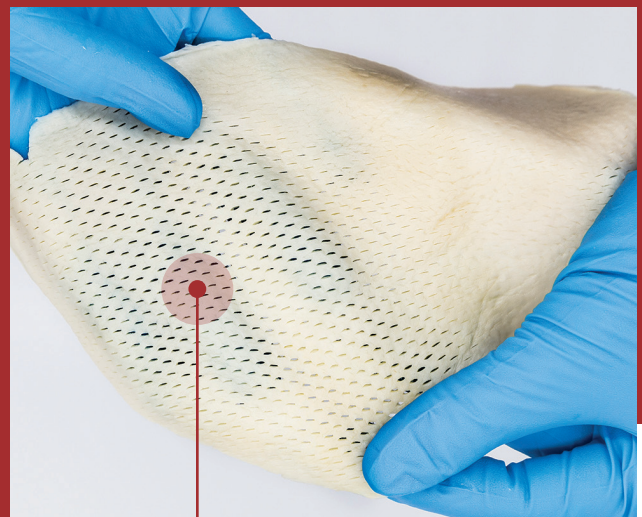
### ULTIMATE TENSILE STRENGTH (MPa)



### SUTURE PULLOUT STRENGTH (N)



AlloMend Mesh Shaped ADM in unique elliptical design.



**1:1 MESHING RATIO**  
increases surface area 97.5%  
for faster fluid egress and  
potential incorporation<sup>15</sup>

## AlloMend® Medium (M)

ACELLULAR DERMAL MATRIX

— THICKNESS: 0.5 - 1.0 mm —

MESH	WIDTH	LENGTH	AREA	CONDITION	STORAGE	OEM #	IDIQ REF NO
Non-Meshed	2 cm	4 cm	8 cm <sup>2</sup>	Sterile	Ambient	73583008	CLIN0992
Non-Meshed	4 cm	4 cm	16 cm <sup>2</sup>	Sterile	Ambient	73583016	CLIN0993
Non-Meshed	4 cm	8 cm	32 cm <sup>2</sup>	Sterile	Ambient	73583032	CLIN0994
Non-Meshed	6 cm	16 cm	96 cm <sup>2</sup>	Sterile	Ambient	77583096	CLIN0998
1:1	6 cm	16 cm	96 cm <sup>2</sup>	Sterile	Ambient	73583096	
Non-Meshed	8 cm	10 cm	80 cm <sup>2</sup>	Sterile	Ambient	73583080	
1:1	8 cm	10 cm	80 cm <sup>2</sup>	Sterile	Ambient	77583080	
Non-Meshed	8 cm	16 cm	128 cm <sup>2</sup>	Sterile	Ambient	77583128	
1:1	8 cm	16 cm	128 cm <sup>2</sup>	Sterile	Ambient	73583128	CLIN01167
Non-Meshed	16 cm	20 cm	320 cm <sup>2</sup>	Sterile	Ambient	73583320	
1:1*	16 cm	20 cm	320 cm <sup>2</sup>	Sterile	Ambient	77583320	CLIN1360
Non-Meshed	20 cm	20 cm	400 cm <sup>2</sup>	Sterile	Ambient	73583400	
1.1*	20 cm	20 cm	400 cm <sup>2</sup>	Sterile	Ambient	77583400	

\*1 cm Non-Meshed Border

## AlloMend Thick (T)

ACELLULAR DERMAL MATRIX

— THICKNESS: 0.5 - 1.0 mm —

MESH	WIDTH	LENGTH	AREA	CONDITION	STORAGE	OEM #	IDIQ REF NO
Non-Meshed	2 cm	4 cm	8 cm <sup>2</sup>	Sterile	Ambient	73083008	CLIN0978
Non-Meshed	4 cm	4 cm	16 cm <sup>2</sup>	Sterile	Ambient	73083016	CLIN0979
Non-Meshed	2 cm	12 cm	24 cm <sup>2</sup>	Sterile	Ambient	73083024	CLIN0980
Non-Meshed	4 cm	8 cm	32 cm <sup>2</sup>	Sterile	Ambient	73083032	CLIN0981
Non-Meshed	4 cm	12 cm	48 cm <sup>2</sup>	Sterile	Ambient	73083048	CLIN0982
Non-Meshed	4 cm	16 cm	64 cm <sup>2</sup>	Sterile	Ambient	73083064	CLIN0983
Non-Meshed	6 cm	12 cm	72 cm <sup>2</sup>	Sterile	Ambient	73083072	CLIN0984
Non-Meshed	6 cm	16 cm	96 cm <sup>2</sup>	Sterile	Ambient	73083096	CLIN0985
Non-Meshed	8 cm	16 cm	128 cm <sup>2</sup>	Sterile	Ambient	73083128	CLIN0986
1:1	8 cm	16 cm	128 cm <sup>2</sup>	Sterile	Ambient	73303128	
Non-Meshed	16 cm	20 cm	320 cm <sup>2</sup>	Sterile	Ambient	73083320	
1:1*	16 cm	20 cm	320 cm <sup>2</sup>	Sterile	Ambient	77383320	CLIN01359
Non-Meshed	20 cm	20 cm	400 cm <sup>2</sup>	Sterile	Ambient	73083400	
1:1*	20 cm	20 cm	400 cm <sup>2</sup>	Sterile	Ambient	77383400	

\*1 cm Non-Meshed Border

## AlloMend Extra-Thick (XT)

ACELLULAR DERMAL MATRIX

— THICKNESS: 2.0 - 3.0 mm —

MESH	WIDTH	LENGTH	AREA	CONDITION	STORAGE	OEM #	IDIQ REF NO
Non-Meshed	4 cm	4 cm	16 cm <sup>2</sup>	Sterile	Ambient	73183016	CLIN0987
Non-Meshed	4 cm	8 cm	32 cm <sup>2</sup>	Sterile	Ambient	73183032	CLIN0988
Non-Meshed	4 cm	16 cm	64 cm <sup>2</sup>	Sterile	Ambient	73183064	CLIN0989
Non-Meshed	6 cm	16 cm	96 cm <sup>2</sup>	Sterile	Ambient	73183096	CLIN0990
Non-Meshed	8 cm	16 cm	128 cm <sup>2</sup>	Sterile	Ambient	73183128	CLIN0991

CLIN numbers are available on VA IDIQ Contract: 36C10G23D0066

**ORDER NOW**  
888.240.8091

## AlloMend Ultra-Thick (UT)

ACELLULAR DERMAL MATRIX

— THICKNESS: 3.0 - 4.0 mm —

MESH	WIDTH	LENGTH	AREA	CONDITION	STORAGE	OEM #	IDIQ REF NO
Non-Meshed	4 cm	4 cm	16 cm <sup>2</sup>	Sterile	Ambient	73283016	CLIN0995
Non-Meshed	4 cm	8 cm	32 cm <sup>2</sup>	Sterile	Ambient	73283032	CLIN0996
Non-Meshed	5 cm	7 cm	35 cm <sup>2</sup>	Sterile	Ambient	73283035	CLIN0997

## AlloMend Mesh Shaped (M)

ACELLULAR DERMAL MATRIX

— THICKNESS: 0.5 - 1.0 mm —

MESH	WIDTH	LENGTH	AREA	CONDITION	STORAGE	OEM #	IDIQ REF NO
1:1	8 cm	14 cm	112 cm <sup>2</sup>	Sterile	Ambient	77503112	
1:1	10 cm	18 cm	180 cm <sup>2</sup>	Sterile	Ambient	77503180	
1:1	12 cm	22 cm	264 cm <sup>2</sup>	Sterile	Ambient	77503264	

## AlloMend Mesh Shaped (T)

ACELLULAR DERMAL MATRIX

— THICKNESS: 1.0 - 2.0 mm —

MESH	WIDTH	LENGTH	AREA	CONDITION	STORAGE	OEM #	IDIQ REF NO
1:1	8 cm	14 cm	112 cm <sup>2</sup>	Sterile	Ambient	77303112	
1:1	10 cm	18 cm	180 cm <sup>2</sup>	Sterile	Ambient	77383180	CLIN0999
1:1	12 cm	22 cm	264 cm <sup>2</sup>	Sterile	Ambient	77303264	

- Kocak E, et al. Biologic matrices in oncologic breast reconstruction after mastectomy. *Expert Review of Medical Devices*. 2014; 11(1): 65-75.
- Pappas G, et al. Biological mesh in hernia repair, abdominal wall defects reconstruction and treatment of pelvic organ prolapse: A review of the clinical evidence. *The American Surgeon*. 2010; 76(11): 1290-99.
- Wilkins R. Acellular dermal grafts augmentation in quadriceps tendon rupture repair. *Current Orthopaedic Practice*. 2010; 21(3): 315-19.
- Barber FA, et al. A prospective, randomized evaluation of acellular human dermal matrix augmentation for arthroscopic rotator cuff repair. *Arthroscopy*. 2012; 28(1): 8-15.
- Frisella A. Superior capsular reconstruction with AlloMend acellular dermal matrix for reconstruction of a massive, irreparable rotator cuff tear. *AlloSource White Paper*. 2017; 00125-LIT [002].
- Farrell J. Augmentation of the plantar fat pad using AlloMend acellular dermal matrix. *AlloSource White Paper*. 2017; 00112-LIT [001].
- Mirzayan R, Sethi P. Distal biceps repair with acellular dermal graft augmentation. *Operative Techniques in Sports Medicine*. 2018; 26(2): 130-35.
- Richters C, et al. Development of a dermal matrix from glycerol preserved allogenic skin. *Cell and Tissue Banking*. 2008; 9(4): 309-15.
- Michael TE. Xenograft risks: What you and your patients need to know. *American Academy of Orthopaedic Surgeons*. www.aaos.org/news/aaosnow/jun09/research3.asp.
- Stilwell R, Delaney R. The biomechanics of AlloMend acellular dermal matrix: Biocompatibility study. *AlloSource White Paper*. 2016; 00088-LIT [001].
- Delaney R, Stilwell R. The biologic properties of AlloMend acellular dermal matrix: Growth factor study. *AlloSource White Paper*. 2016; 00104-LIT [001].
- Stevens PJ, et al. The biomechanics of AlloMend acellular dermal matrix: Ultimate tensile strength. *AlloSource White Paper*. 2020; 00048-LIT [002].
- Stilwell R, et al. The biomechanics of AlloMend acellular dermal matrix: Suture retention strength. *AlloSource White Paper*. 2020; 00078-LIT [002].
- Blume L, Sakthivel R. The biomechanical properties of meshed AlloMend acellular dermal matrix: Fluid egress and surface area. *AlloSource White Paper*. 2019; 00149-LIT [001].
- Sweitzer K, Caruthers KH, et al. The biomechanical properties of meshed versus perforated acellular dermal matrices (ADMs). *Plast Reconstr Surg Glob Open*. 2021; 9:e345.

### LEARN MORE:

Contact Spartan Medical Inc.

(888) 240-8091

CS@SPARTANMEDICAL.COM



### SPARTAN MEDICAL INC.

7537 Lindbergh Drive  
Gaithersburg, MD 20879

spartanmedical.com

UEI: LCJBD88KQ8G3

DUNS: 807438341 | CAGE:65VT5

