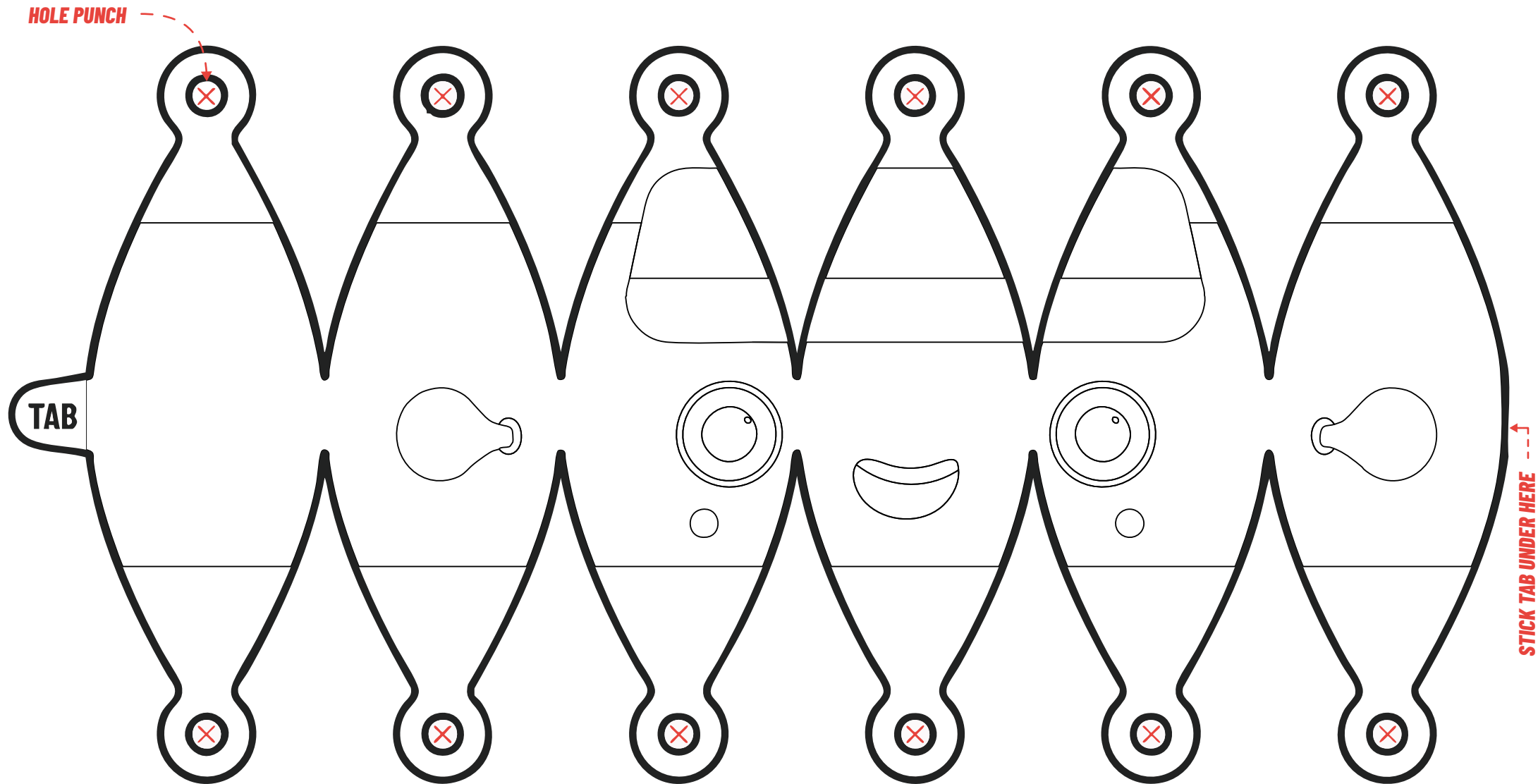
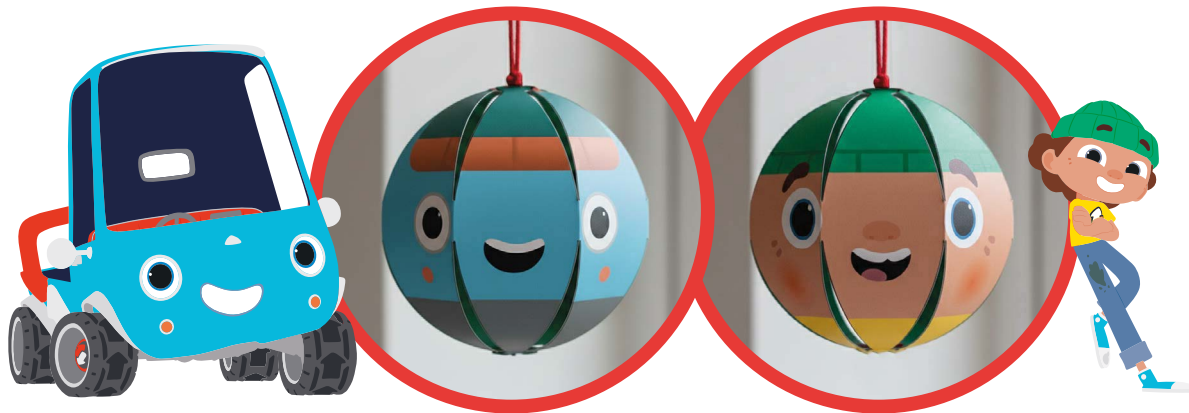


BO AND MOJO FESTIVE BAUBLES

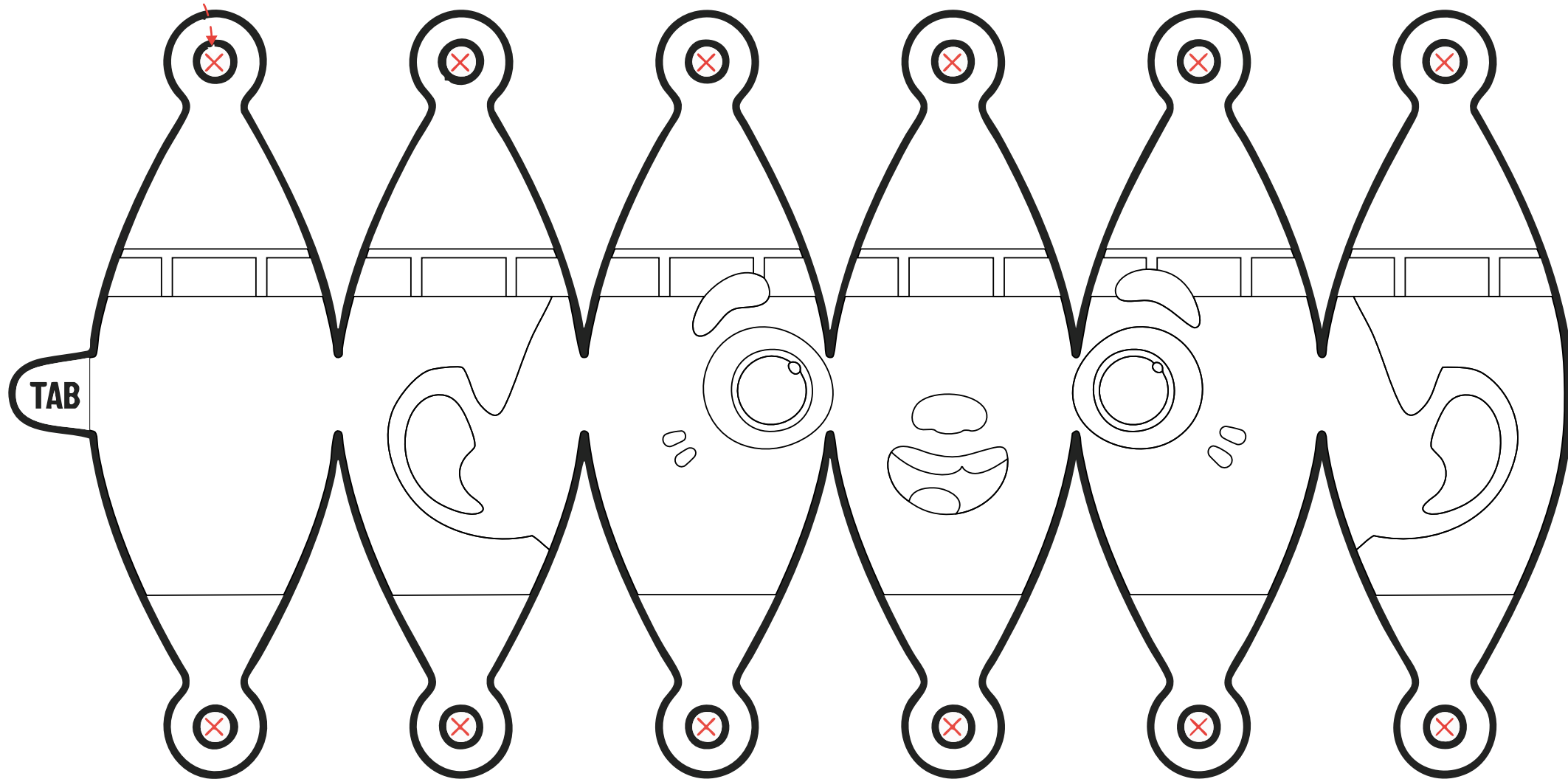
1. Carefully cut out the decoration along the solid black outline with safety scissors.
2. Ask a grown-up to help make holes with a hole-punch where shown.
3. Put some child-safe glue on a 10cm diameter polystyrene bauble and curve the decoration around it, gluing the tab to the opposite side.
4. Place some string through all the holes of one side to hold the shape in place.
5. Repeat this with the opposite side of the decoration.





**CHRISTMAS
IS A GO GO!**

HOLE PUNCH



STICK TAB UNDER HERE