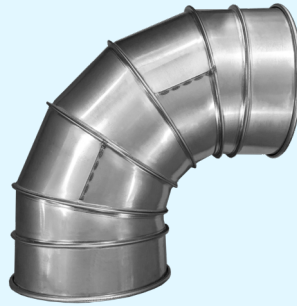




Segmented Elbows

- Available in sizes 7-24", in any degree and radius of .75xD and up*
- Available in Galvanized and SS
- Fitted with flanges, rolled lips, or left raw for welding

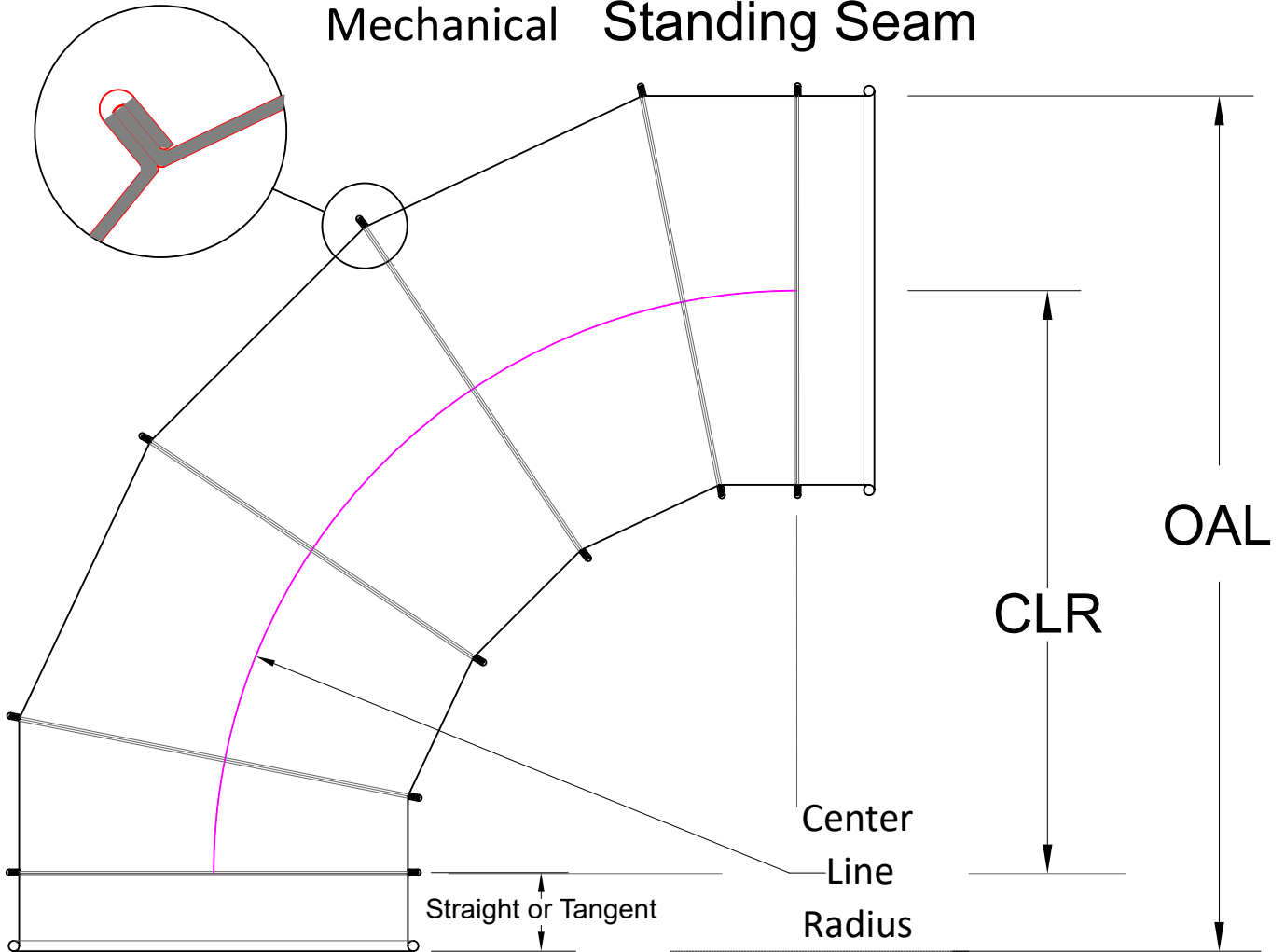


Segmented Elbows												
Size	Rolled Lip & Ang.FL		Rolled Lip & Ang.FL		Rolled Lip & Ang.FL		Raw ends		Raw ends		Raw ends	
	1.0CLR @ 90Deg.		1.5CLR @ 90Deg.		2.5CLR @ 90Deg.		1.0CLR @ 90Deg.		1.5CLR @ 90Deg.		2.5CLR @ 90Deg.	
	CLR	OAL	CLR	OAL	CLR	OAL	CLR	OAL	CLR	OAL	CLR	OAL
7	7	12.5	10.5	16	17.5	23	7	13.5	10.5	17	17.5	24
8	8	14	12	18	20	26	8	15	12	19	20	27
9	9	15.5	13.5	20	22.5	29	9	16.5	13.5	21	22.5	30
10	10	17	15	22	25	32	10	18	15	23	25	33
11	11	18.5	16.5	24	27.5	35	11	19.5	16.5	25	27.5	36
12	12	20	18	26	30	38	12	21	18	27	30	39
13	13	21.5	19.5	28	32.5	41	13	22.5	19.5	29	32.5	42
14	14	23	21	30	35	44	14	24	21	31	35	45
15	15	24.5	22.5	32	37.5	47	15	25.5	22.5	33	37.5	48
16	16	26	24	34	40	50	16	27	24	35	40	51
17	17	27.5	25.5	36	42.5	53	17	28.5	25.5	37	42.5	54
18	18	29	27	38	45	56	18	30	27	39	45	57
19	19	30.5	28.5	40	47.5	59	19	31.5	28.5	41	47.5	60
20	20	32	30	42	***	***	20	33	30	43	***	***
21	21	33.5	31.5	44	***	***	21	34.5	31.5	45	***	***
22	22	35	33	46	***	***	22	36	33	47	***	***
23	23	36.5	34.5	48	***	***	23	37.5	34.5	49	***	***
24	24	38	36	50	***	***	24	39	36	51	***	***

*** Made as two 2.5CLR 45 Degree Elbows



Cross Sectional detail of a Mechanical Standing Seam



***Straight or Tangent added to Radius Rolled Lip=2 and Ang. FL=2"L ID/
OD's=3"L Above 2.5xD gores may need to be added**