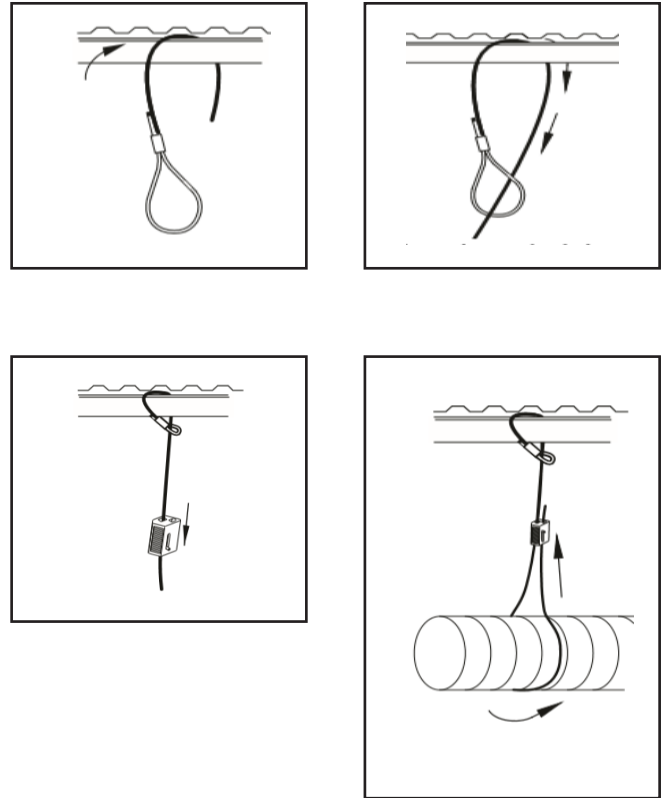


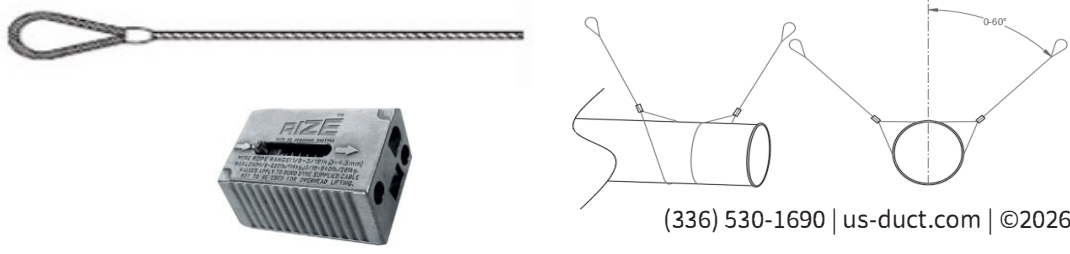
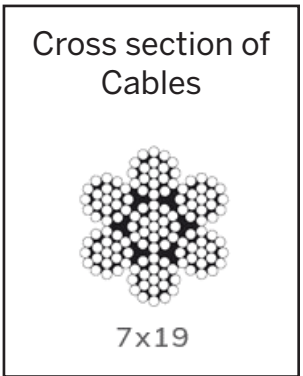
Cable Hanger

Often called 'trapeze' or Gripple hangers, cable hangers are fast and easy. The cables are secured by Gripple style clamps and suspend the duct in a 'trapeze-like' hammock. This option is most often used in conjunction with other more stable hangers as it offerings little horizontal support.

- Step 1: Pass the end of the wire rope around the anchor point.
- Step 2: Pass the end of the wire rope through the cable loop. Pull on the end of the wire rope to tighten it around the anchor point.
- Step 3: Pull adjustment pin back and pass the end of the wire rope through the Kwik-Loc. Failure to pull adjustment pin first may cause damage to serrated teeth and reduce holding capacity.
- Step 4: Loop the wire rope around the ductwork and back up through the Kwik-Loc. Always confirm engagement of KWIK-LOC on wire before applying load by pushing the adjustment pin in the opposite direction of arrows on the cable. To adjust, take the load off and pull the tail slightly to disengage teeth, then release using adjustment pin



USD PN	Kit Description	Safe Working Load (Max)	Manufacturer PN
HNG-#5.S	K-wick Hanger #5-15' cable	1,100 lbs.	RWC8
HNG-#4.S	K-wick Hanger #4-15' cable	640 lbs.	RWC6
HNG-#3.S	K-wick Hanger #3-15' cable	250 lbs.	RWC4
All kits come with 1,15' long cable with loop and 1 lock block			



(336) 530-1690 | us-duct.com | ©2026 US Duct, All Rights Reserved.03 / 26

Cable locks can be used to suspend objects safely at angles of up to 60 degree from the vertical. However, suspension at angles does reduce the safe working load per the table below.

Size	Vertical	15	30	45	60
RWC8	1,100 lbs.	1,060 lbs.	950 lbs.	775 lbs.	550 lbs.
RWC6	640 lbs.	625 lbs.	559 lbs.	455 lbs.	325 lbs.
RWC4	250 lbs.	240 lbs.	215 lbs.	175 lbs.	125 lbs.