

ABOUT US DUCT

DUCTWORK MADE EASY

American manufacturer based
out of North Carolina
336-530-1690
info@us-duct.com

WE TAKE IT PERSONALLY- BECAUSE YOUR SUCCESS MATTERS.

OWNER-OPERATED. CUSTOMER-CENTRIC. BACKED BY ACCOUNTABILITY.

➔ Why Us

At US Duct, we are owner-operated, which means you do not get a call center—you get real people who care, respond fast, and take your needs personally.

We answer the phone after hours. We build real relationships with our customers. In many cases, those relationships become friendships that last for years, because we genuinely care about the people and businesses we serve.

We are a thriving company because we are customer-centric at our core. We understand that your time is money, and we work hard to protect both. We do not just talk about service—we back it up with guarantees that protect your time and your investment.

2% GUARANTEE

If we ever miss the mark, we stand behind our work with a 2% Guarantee.

Not because we expect problems, but because we are confident enough to put our money on the line. It is our way of saying: we own the outcome, and you are protected.



SELECTED PROJECT EXPERIENCE

Automotive & Transportation: Ford, Volvo, GM, Toyota
Industrial, Process & Manufacturing: PPG, Fluor, Samsung, LG, Nucor
Food & Consumer Products: Folgers, Nestle, Duracell, McFee Foods
Specialty / Other: Fender Guitar

INDUSTRIES WE SERVE

• Food • Manufacturing • Aerospace • Agriculture • Automotive • Industrial Process • General/Fume Exhaust-Negative and Positive Pressure Systems • Material Handling • Grain Medical • Mining • Wood • Plastic • Chemical • Paper • Textiles • Thermal Oxidizers • Battery • Foundry • Refractory
You name it, we do it.

WHAT CUSTOMERS CAN EXPECT

- Fast response
- After-hours support
- Long-lasting relationships
- Quality fabrication
- Reduced rework and waste
- Accountability backed by a guarantee

SUSTAINABILITY AT US DUCT

At US Duct, we contribute to sustainability through quality fabrication, long service life, reduced rework and waste, efficient system performance, and cleaner, safer operations. We recognize the growing importance of measurable sustainability expectations and continue to evaluate how best to align with customer requirements.

DUCT TYPES

US Duct is the only manufacturer offering multiple connection systems. Choose the system that's right for you depending on your application. All components, unique, and custom fabrications can be manufactured using the connection type of your choice. Laser special welding is available on all applicable products, gauges, and materials.

TWO CLAMP-TOGETHER DUCT SYSTEMS



➔ Rolled-Lip (Gasketed Clamp)

US Duct's Rolled-Lip Clamp-Together System utilizes a rolled edge formed on the end of all parts.

- A gasketed, over-center clamp joins the lips
- Clamp-together system reduces installation time by up to 70%
- Fittings' adjustable sleeve and collar allow for infinite field adjustments



➔ Vanstone Edge (Fully-Gasketed Edge)

US Tubing, our airtight Clamp-Connect System, is:

- A modular, laser-welded, clamp-and-gasket joining system
- Guaranteed leak-free
- Each end has a turned-out lip. A V-shaped gasket fits over one lip at each joint. An adjustable clamp completes the connection and forms an airtight seal.
- Adjustable sleeve allows for easy adjustments in the field

TWO FLANGE DUCT OPTIONS

US Duct provides ducts with traditional flanges (angle rings) in carbon steel, galvanized, or stainless steel (SS) with holes in sizes 3" and up. These flanges are placed behind turned-out pipe edges or welded to the end of each component. The two flanges at each joint are bolted together, with or without a sealing gasket.



Vanstone: This term refers to a technique where a flange is used to mate 90° lips turned onto the pipe or duct component. In this method, the flange is placed onto the pipe, the lip turned back, and the flange trapped behind it so it can spin freely.

Welded: These flanges are welded to the duct, and the faces of the flanges are the mating surfaces. Gaskets are often added between the flanges to create an even tighter seal.

ROLLED LIP

LASER-WELDED CLAMP-TOGETHER DUCT—UP TO 70% FASTER!

At US Duct, Clamp-Together is available in

- Diameter sizes 3"-24"
- Galvanized and stainless steel
- Standard and heavy (up to 10) gauge.

In addition to laser-welded 5' pipe sections, we provide all necessary components and special fittings. The system is designed to be infinitely adjustable. While the Clamp-Together Duct is often the fastest, easiest, and cheapest way to address many dust collection applications, it is usually best used with other connection methods as dictated by application or duct size.



Our extensive knowledge will enable you to get the best solution—for the application and budget using the duct that best fits your need—all from one place!

Learn more at us-duct.com/products/clamp-together-duct.

“US Duct’s clamp together duct was easy to install, so we were up and running in no time. This allowed us to keep production running with very little downtime.”

-Rick W., End User

VANSTONE EDGE

US TUBING: OUR AIRTIGHT, LEAK-FREE CLAMP-CONNECTION PRODUCT IS THE ULTIMATE SEAL®!

US Tubing, our airtight Clamp-Connect system, is a modular, laser-welded, clamp-and-gasket joining system guaranteed leak-free.

A V-shaped gasket goes over each joint, and the adjustable clamp completes the connection. When the clamp is tightened, it compresses the gasket between the pipe edges to form an airtight seal.

The components are standard 22-18 gauge metal with a range of up to 16 gauge available. The pipe comes in standard 59" lengths and can be clamped together to produce long runs. An adjustable sleeve pipe allows for **infinite adjustments** in the field.



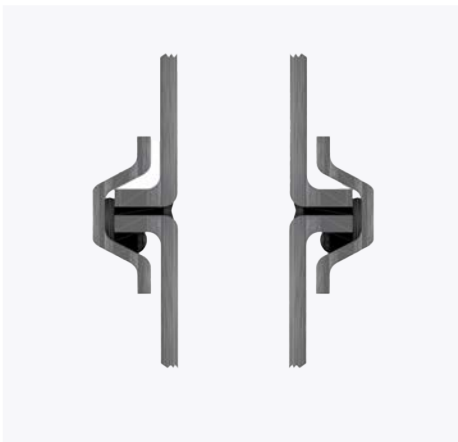
US Tubing has the convenience of clamp-together duct AND the airtight seal of flanged. Visit us-duct.com/products/tubing and let Myles show you how US Tubing is the best of both worlds!



V-Gasket & High Strength Clamp



Sliced View: Clamp compressing gasket on Vanstone ends



FLANGED OPTIONS

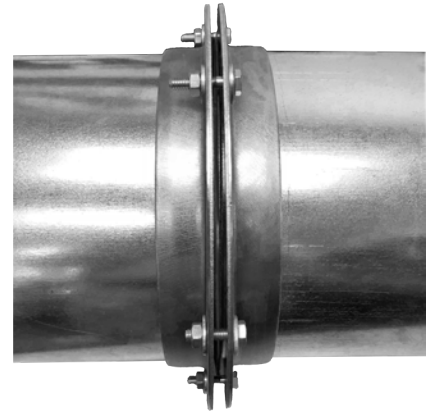
YES, we carry flanged duct! We provide ducts with flanges (angle rings) in carbon steel, galvanized or stainless steel-and with holes. The ducts that have these flanges are available in sizes 3" and up and in carbon steel, galvanized, or SS. Construction methods range from laser-welded pipe and mechanically locked elbows (in lighter gauges) to MIG-welded pipe and components in heavy gauge (even up to 1/4")—all depending upon the application. Flanges can be loose (Vanstoned) or welded to the pipe/components.

➔ Vanstone Edge

Vanstoning uses a flange to mate 90-degree lips turned onto the pipe or duct component. In this method, the flange is placed onto the pipe, the lip is turned back, and the flange can be spun to mate to the next pipe.

➔ Welded

In this technique, flanges are welded to the duct and the faces of the flanges are the mating surfaces. This is different from a Vanstone edge, where the duct lips are mating.



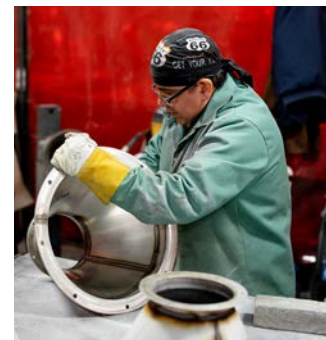
The flanges can be fully welded (meaning that there is a continuous weld) or intermittently welded (meaning that there is a weld at intervals around the duct).

CUSTOM FABRICATIONS



FROM THE HEAVIEST TO THE SMALLEST PRODUCTS

We can fabricate virtually any sheet metal product you need, from your designs or ours. We can produce the custom fabrication from light gauges up to 1/4" steel, a tiny hood, or a truckload of armor-rated plate boxes.



SPECIAL-SOLUTION PRODUCTS

COMPONENTS AND ACCESSORIES TO MEET YOUR SPECIAL APPLICATION REQUIREMENTS.

These unique solutions solve common ductwork challenges, including special hood designs, automatic gates and diverter valves, oil/effluent system fittings, exhaust stacks, valves, and our patented Spark Trap (see page 9 for Spark Trap).



You don't even have to learn. No time for drawings, too busy selling? Our engineers will do it for you.

Hey! Don't see what you're looking for? Visit us-duct.com/custom

LASER WELDING

THE QUALITY OF THE JOB IS ONLY AS GOOD AS THE QUALITY OF THE PRODUCT

When it comes to welding, nothing is more precise or pristine than laser welding. US Duct now offers laser welding for all of our clamp connection pipes. The laser weld offers you a variety of benefits:

➔ Precision work

The clean weld avoids the added bulk of a lock-seam or TIG/MIG welding and thus allows for easier cutting of the pipe for adjusting length while creating an easier fit for the adjustable sleeve.

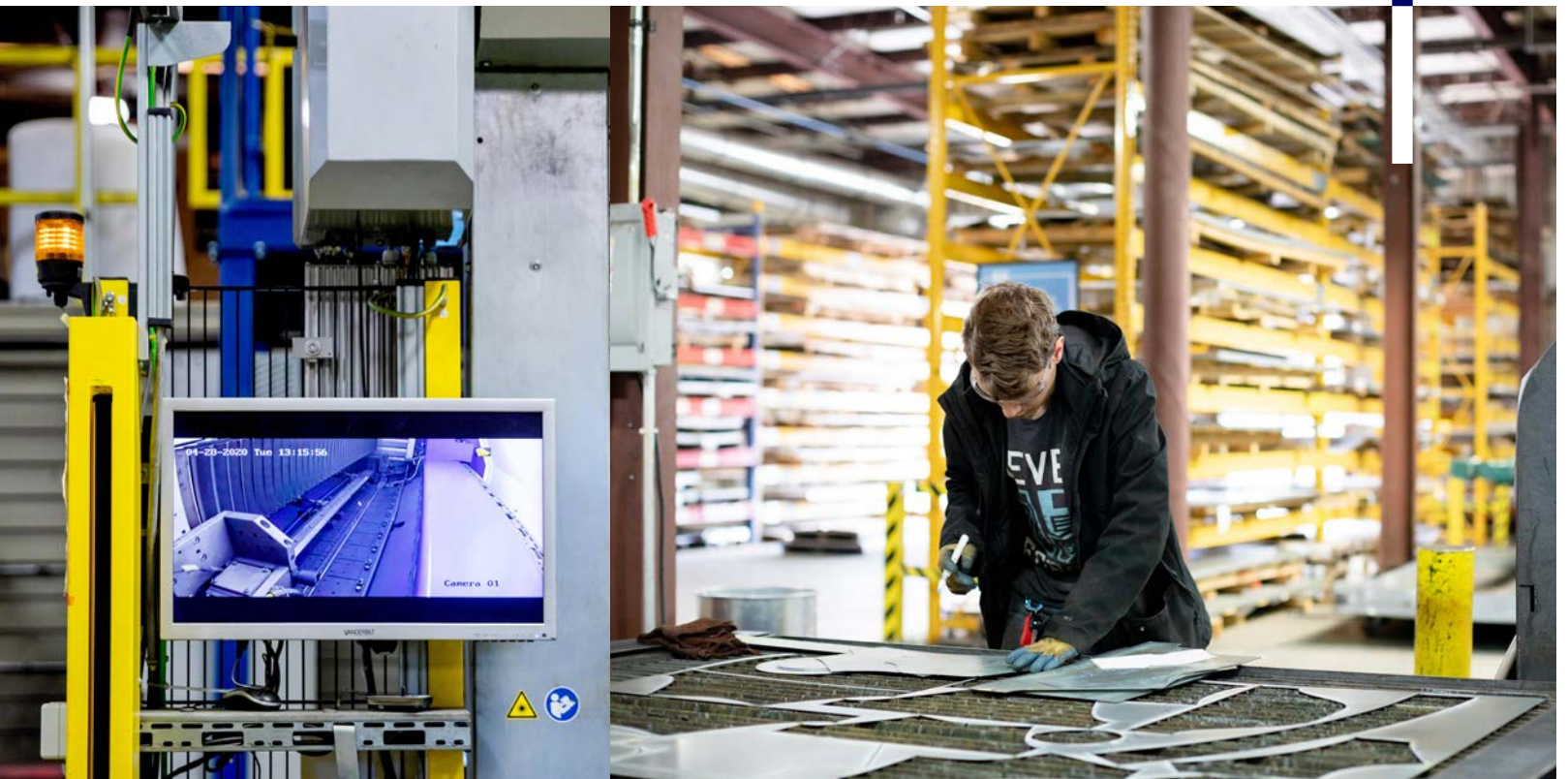
➔ Weld strength

The welded area is stronger than the steel itself. The laser weld is narrow with an excellent depth-to-width ratio and higher strength.



➔ Uniformity

Parts have minimal deformity or shrink.



DUCTQUOTE.COM

DESIGN, ESTIMATE, AND QUOTE IN ONE EASY STEP

Introducing DuctQuote by US Duct, a web-based program for designing and estimating industrial ducting systems. This proprietary software dramatically reduces system design and installation time.

➔ Key Features

- Design dust, mist, and fume collection systems at 20 machine connections per hour.
- Accessible from any browser with a unique user ID and password.

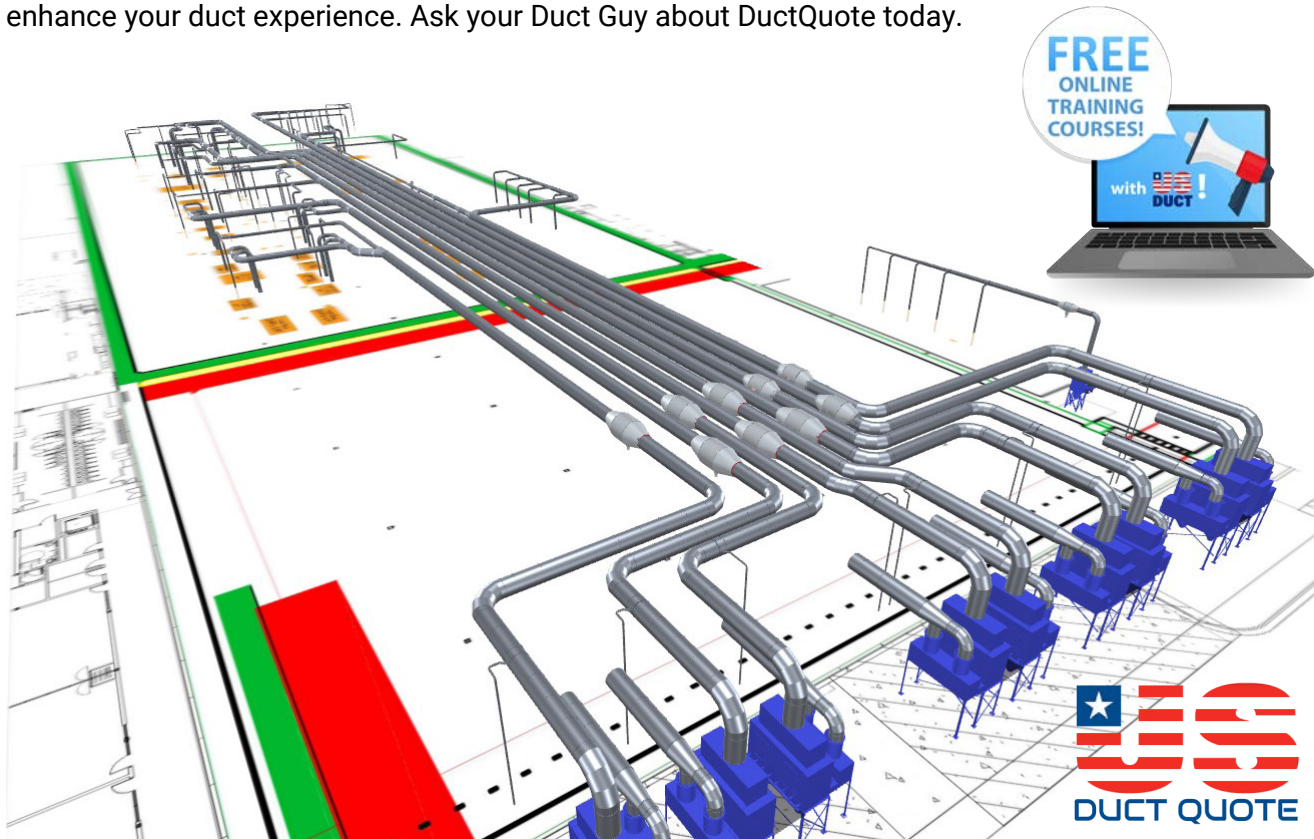
➔ Functionality

- Draws duct paths and inputs desired velocity and CFM.
- Automatically sizes duct, generates a parts list, calculates pressure loss, and provides pricing.
- Produces realistic, interactive 3D drawings to help close jobs.

➔ Benefits

- Saves time and money during installation with detailed 3D drawings and parts lists.
- All projects are stored online for easy access and future edits.

With so many benefits available, including free training courses, DuctQuote is a simple way to enhance your duct experience. Ask your Duct Guy about DuctQuote today.



No time to learn the program? Too busy selling? No worries, we'll do the work for you.

US DUCT'S MISSION

**WE MAKE SELLING INDUSTRIAL DUCTWORK EASY!
IT IS AS EASY AS 1-2-3...4**

01.

➔ **Contact us**

Contact US Duct, and we'll answer the phone (no voicemail jail). Talk to a seasoned duct professional. Get expert help and more duct options than anyone else can offer. Have a drawing and need a take-off? Need a drawing and specifications? We'll handle it. Depending on the project scope, we can even provide you with an online 3D drawing to share with your customer!

02.

➔ **Get the sale**

We provide you with detailed quotes—FAST! We'll even help you present it to your customer and provide you with all the literature and support materials needed to make the sale.

03.

➔ **Get duct**

Approve the quote and tell us when you need it shipped. We ship based on your schedule rather than ours. Benefit from our 7-step quality checks. Get complete packing lists, shipping updates, and installation sheets.

04.

➔ **Get paid**

We ship your duct with everything your customer needs to get it done so you get paid: installation instructions, drawings, and support phone numbers. There is no ugly ducting, just quality duct. We'll commission or bill you for the resale (pay based on predetermined terms).

**ALL WHILE OFFERING YOU THE BEST IN
QUALITY | SERVICE | DELIVERY | PRICE | DESIGN**





NOT TO TOOT OUR OWN HORN, BUUT WE'RE PRETTY AWESOME.

US Duct always takes care of us with the highest quality products and the fastest shipping times in the industry. Their customer service is great, and they will bend over backwards to try and meet our needs.

-Rob S., Dealer

I wanted to tell you straight, the whole project went very well. The ease at which the prefab duct assembled was great. There were some changes I had to make and the ability to get more pipe was critical and that turned out well too! I would recommend this to anyone wanting good quality pipe and easy assembly. It was a snap to put together.

Don B., End User

On many occasions, I've needed quick turnaround on requests that the team at US Duct were able to deliver. The customer service is always outstanding, and the team always professional and polite. I always look forward to the next order I have to place, because I know that it will be a simple, affordable, and well-executed process.

Devin M., Industrial Equipment Dealer

US Duct has been our preferred supplier of ductwork for years. We appreciate their large range of standard duct components, reliable lead times, and flexibility to meet custom requirements for our dust collection systems. DuctQuote is a fantastic tool that has allowed us to respond lightning fast to customer requirements, turning around layouts and quotes for complex duct systems in hours rather than weeks. We especially appreciate the quick responses we always get from the sales team.

-Matt C., Industrial Equipment Dealer

Start making and saving more moolah with US Duct. Call now for a free quote.



DUCT POINTS LOYALTY REWARDS

Start earning rewards for buying
ductwork!

Sign up today and
start earning.



1121 Corporation Dr
Archdale, NC 27263
336-530-1690
info@us-duct.com
us-duct.com

