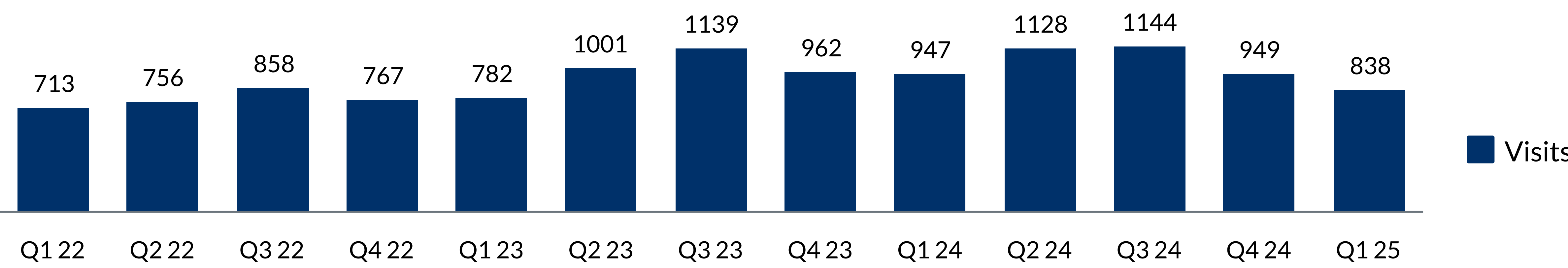


# Substance Use in Stanislaus County

Q1- 2025

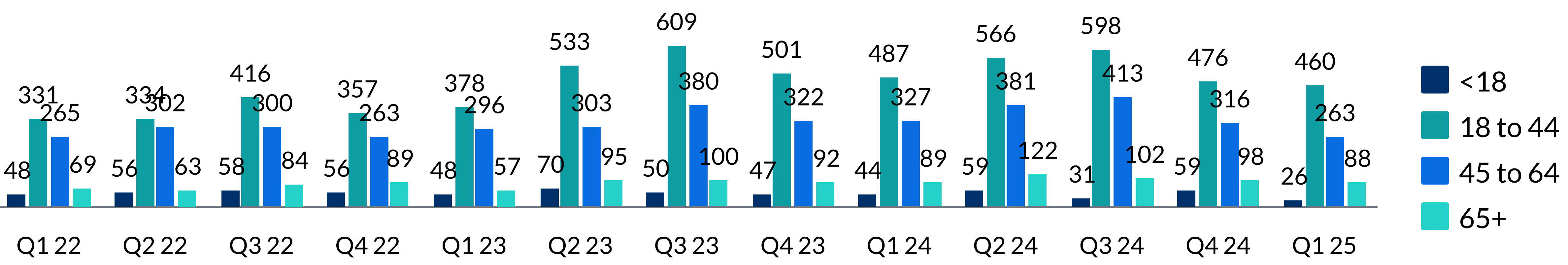
## Alcohol

Alcohol-Related Hospital Visits by Quarters and Years



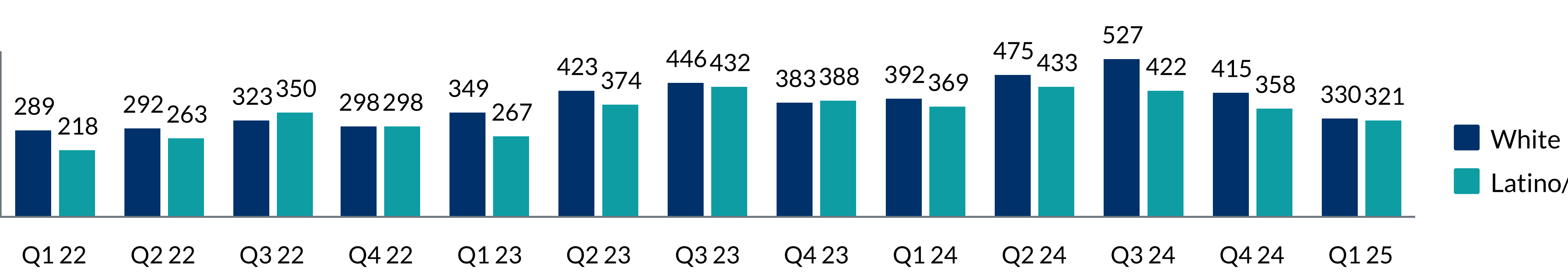
In quarter 1 of 2025, there were 838 alcohol-related hospital visits, reflecting a 12% decrease compared to the previous quarter.

Quarterly Alcohol-Related Hospital Visits by Age



In quarter 1 2025, 55% of alcohol-related emergency department visits were among residents aged 18- 44, while 31% were in the 45 to 64 age group.

Quarterly Alcohol-Related Hospital Visits by Race/Ethnicity



The majority of alcohol-related hospital visits from quarter 1 of 2025 were among white individuals, marking a 20% decrease compared to the previous quarter. There was a 10% decrease among Latino/a visits compared to previous quarter.

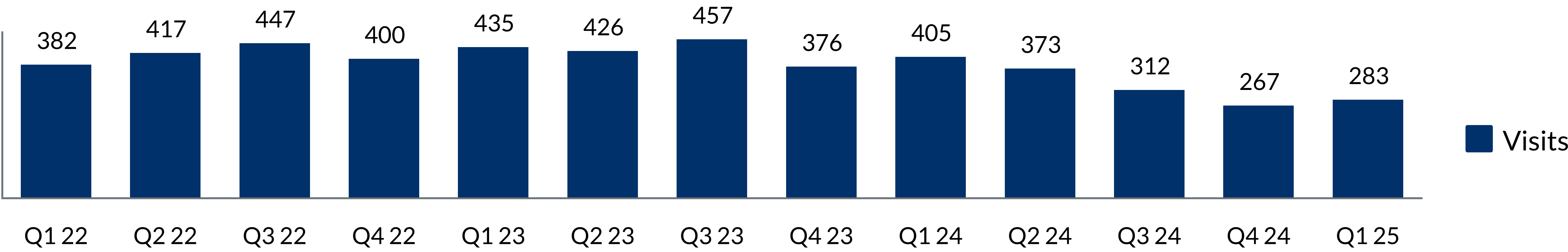
# Substance Use in Stanislaus County

Q1- 2025



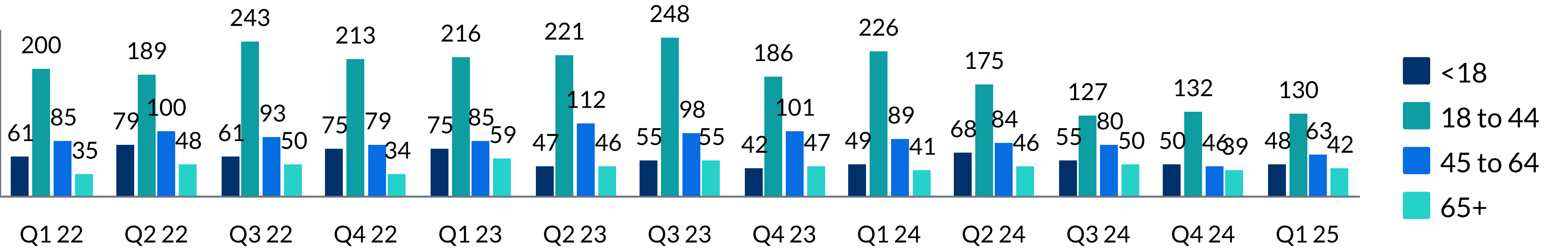
## Drugs

### Drug-Related Hospital Visits by Quarter and Year



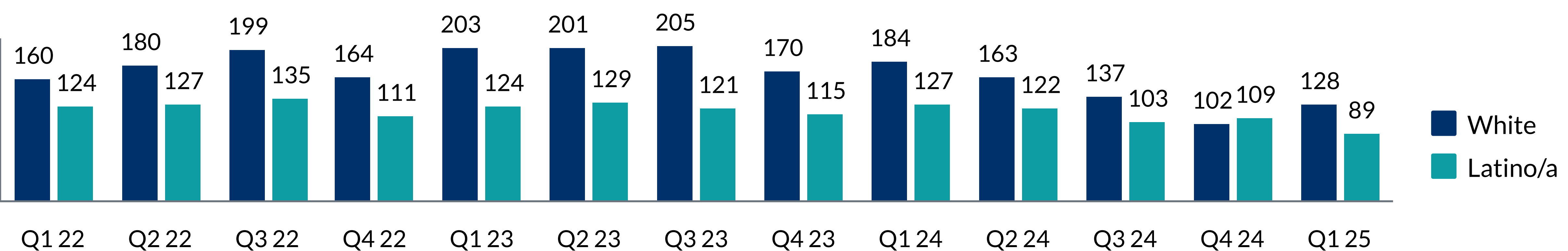
In quarter 1 of 2025, there were 283 drugs-related hospital visits, reflecting a 6% increase compared to the previous quarter.

### Quarterly Drug-Related Hospital Visits by Age



In quarter 1 of 2025, 46% of drug-related Emergency Department visits occurred among residents aged 18-44 , while 22% were in the 45 to 64 age group.

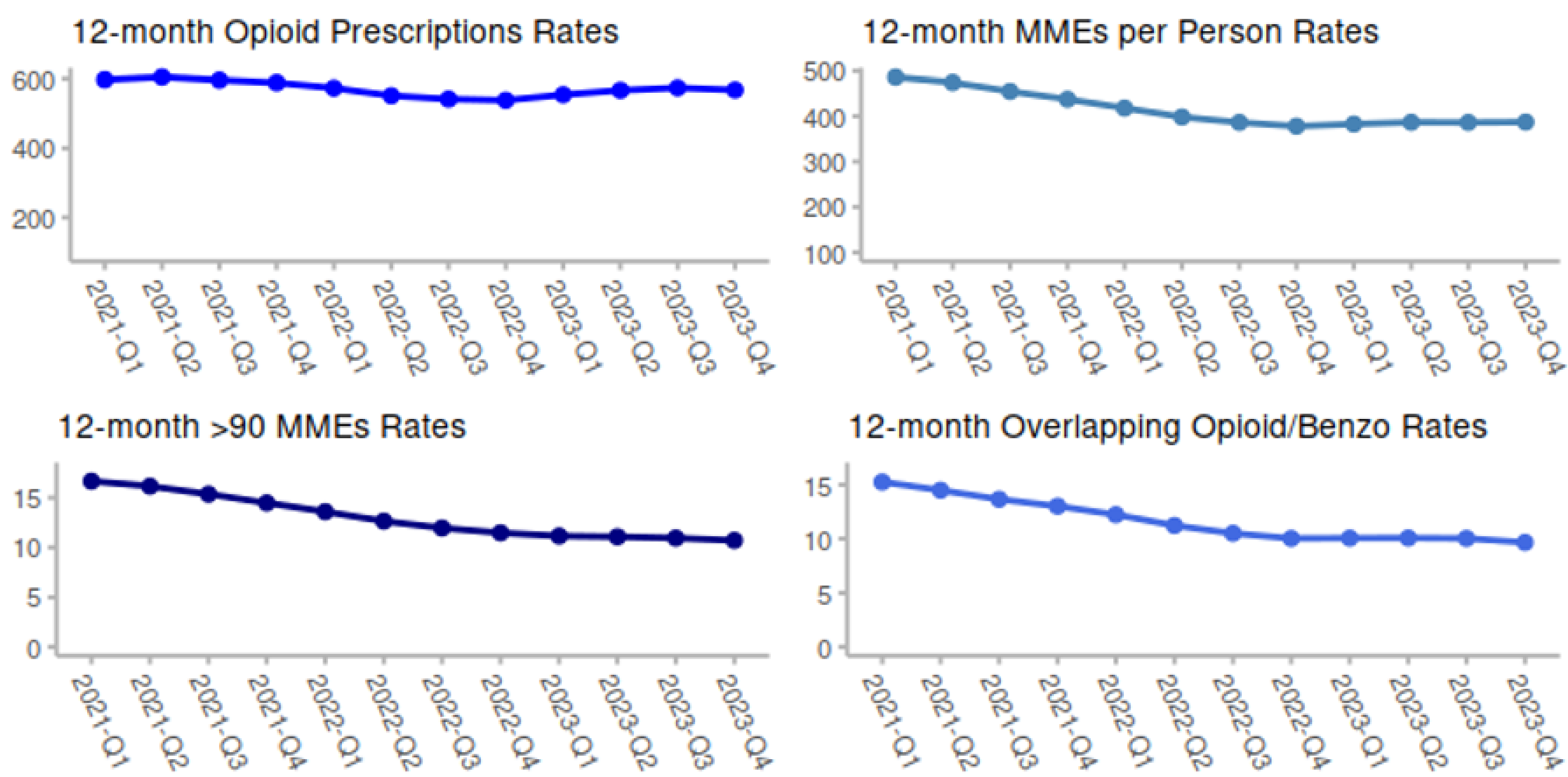
### Quarterly Drug-Related Hospital Visits by Race/Ethnicity



The majority of alcohol-related hospital visits from quarter 1 of 2025 were among white individuals, marking a 25% increase compared to the previous quarter. There was a 18% increase among Latino/a visits compared to previous quarter.

# Prescribing

- There were 330,054 prescriptions for opioids in Stanislaus in 2023.
  - The annual age-adjusted opioid prescribing rate for 2023 was 568.02 per 1,000 residents.
  - This represents a 6% increase in prescribing from 2022.
- The following charts present 12-month moving averages for age-adjusted opioid prescribing rates, MMEs (morphine milligram equivalents) per person, high dosage (i.e. greater than 90 Daily MMEs in the quarter), and opioid/benzodiazepine overlap age-adjusted rate from 2021 to 2023.



# Treatment

- Buprenorphine prescriptions in the county are used to gauge the expansion of medications for opioid use disorder (MOUD).
- The annual age-adjusted buprenorphine prescribing rate for 2023 was 28.57 per 1,000 residents.
- This represents an 18% increase in buprenorphine prescribing from 2022.

