

# Test Instructions and Symptom Diary

## During the test

It is important to note:

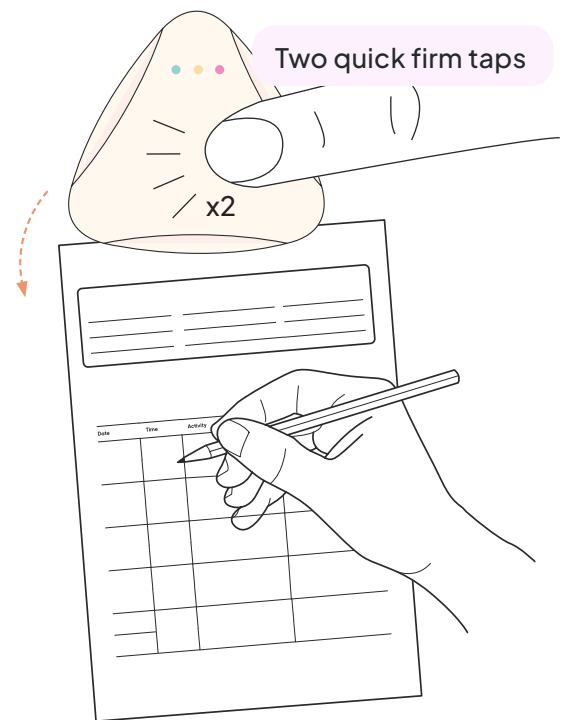
- Continue daily routines as normal.
- Take short showers and pat the device dry. **DO NOT** bath or submerge device in water.
- Mild skin irritation or redness is normal, but try to avoid scratching.

### 1. Recording an event

- When experiencing symptoms, double-tap the recorder with quick firm taps.
- A series of red, green & yellow lights will flash to indicate the event has been recorded.
- Fill out the Symptom Diary on the reverse of these instructions.

⚠ If skin irritation becomes unbearable you should remove device first then the electrodes, and seek medical advice.

### 1 Marking a symptomatic event



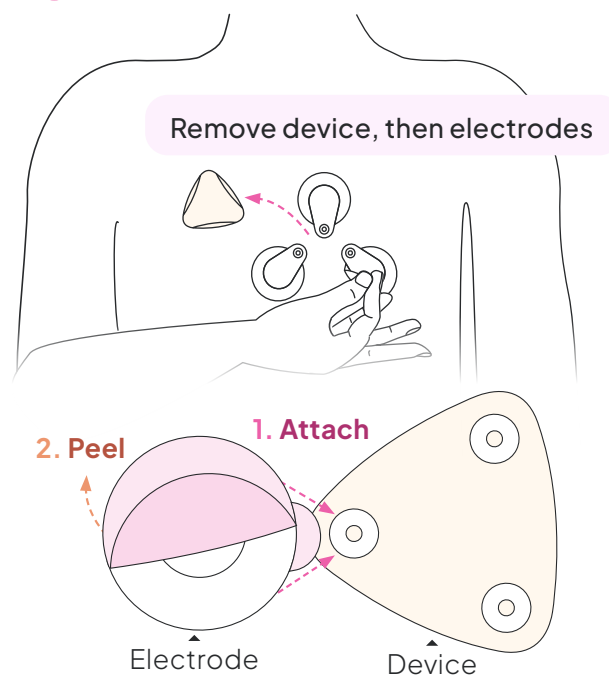
### 2. Replacing the electrode and device

- Remove the device from the electrodes, and place safely nearby. Do not discard device. i Electrodes are the round stickers that attach to the device
- Carefully remove each electrode individually and dispose.
- Attach new electrodes to the metal anchor points on the back of the device **before** peeling.
- Once all are attached, peel the protective backing from the electrodes.
- Carefully position and apply the device at a similar location as before.

The diary is on the back of this document.

You may also have been provided with additional pages, be sure to keep one with you at all times

### 2 Replacing electrodes



Need help?

Contact the prescribing physician for guidance about device use

