



Crane kits of **EUROCRANE**



◆ Brief Introduction- Company History



2007

Established Factory
In Suzhou



2015

Founded A-drive (Suzhou)



2017

Public listed in Shanghai
Stock Exchange

2002

Company established

2012

Founded Novocranes

2016

Aquired Machinery
Manufacturing Plant





Company Milestones



Acquire Voithcrane

Acquire Dali crane

Working platform Fronteq

Joint venture with AIRPES

New factory in Huzhou

2018

2019

2019

2021

Changzhou new factory





Company Introduction

- Founded in 2002, EUROCRANE (China) Co., Ltd. is an internationally reputed manufacturer and solutions provider of a full range of cranes and material handling equipments, targeting to serve **high-mid-end** markets with crane technology according to **European standards**.



A-Share Listed
Company

50+

Countries Covered
By Our Products

48

Global Service Center

5000+

Middle And High-end
Customers

300+

Authorized Patents



High-tech Enterprise
Postdoctoral
Workstation



1200+

Number of Employees
Worldwide



Customer-centric
organizational systems
and processes



10

Global manufacturing base



China Yangtze River
Delta region



◆ Brief Introduction-Group member



Eurocrane CHINA

Subsidiaries in China, Hongkong and Singapore



Eurocrane EUROPE

Eurocrane Austria Holding GmbH
Subsidiaries in Austria



Tony Tao

Co-founder of Eurocrane
Director of the Board
CEO of Eurocrane

- Graduated from Shanghai Ocean University with a degree in mechanical design and manufacturing.
- Served in famous multinational firm of Demag and ZPMC.
- Responsible for R&D, sales, production and market of Eurocrane group.



Irene Jin

Co-founder of Eurocrane
Chairwoman of the Board
Co-CEO of Voith GmbH

- Graduated from Harbin Institute of Technology with a Master's Degree in mechanics and also hold Master certificate of CEIBS.
- Over 20 years experience in sphere of crane and material handling
- Responsible for group strategy, financial and M&A



Andreas Lackner

CEO of Voith GmbH
Austria

- Over 20 years technical and management experience in the special crane industry
- Has been working with Fritz Voith for 28 years and is part of the successful history of Fritz Voith



EUROCRANE 17.5+17.5t

02

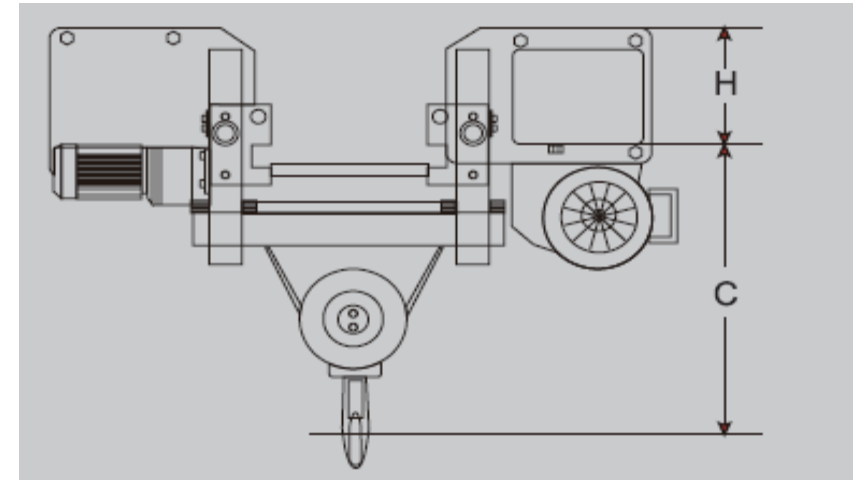
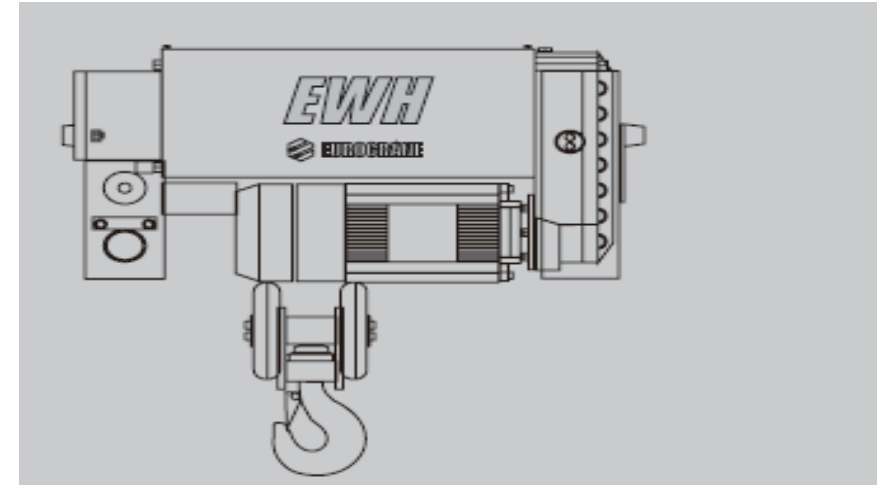
PRODUCT

- Save energy consumption
- Reduce routine maintenance
- Save investment cost
- Improve production efficiency
- Improve return on investment

EUROPEAN DESIGN

Eurocrane featuring the advanced principles and concepts of German design, inherited the consistently improved manufacturing processes and the stringent quality assurance systems.

Provide a comprehensive range of products including ECH electric chain hoists, EWH electric wire rope hoists, EDR environment friendly clean electric hoists, explosion-proof hoists, suspension lightweight monorails, slewing jib cranes and other crane components.





Green and Energy Saving

The great decrease of power of the entire crane will help customers save energy during usage

Safe and Reliable

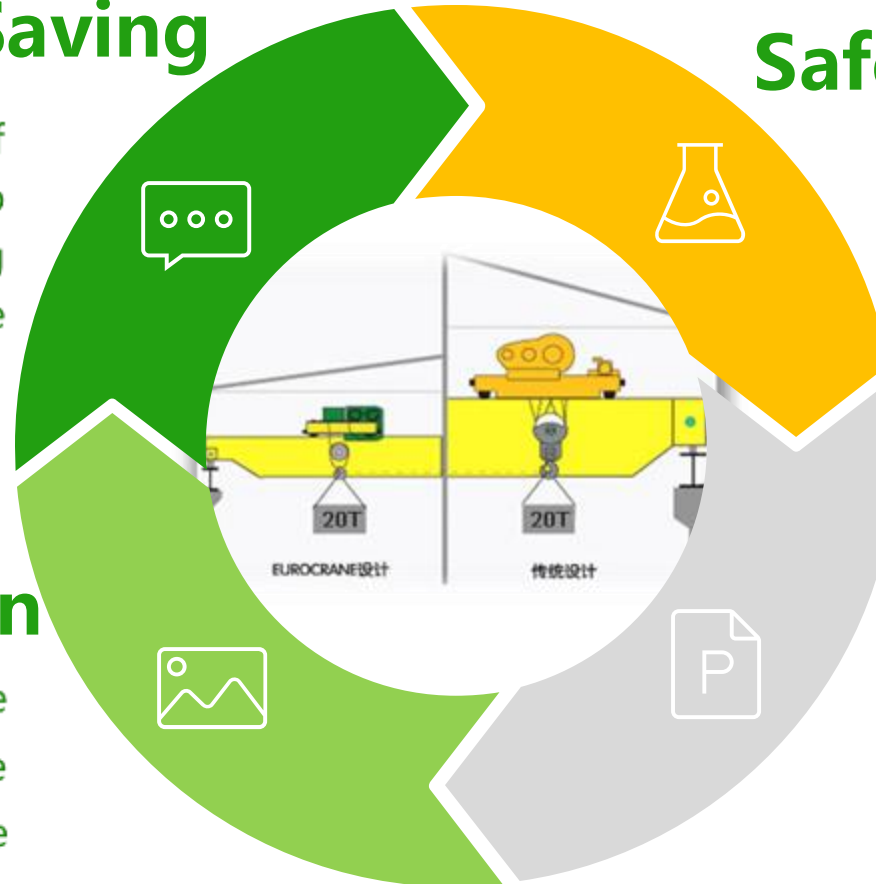
More than ten protection measures ensure the safe operation of crane

Compact Design

Effectively improves the usage rate of space and enables the customers lowering the expense on plants

Excellent Performance

The excellent performance improves customer's production efficiency, reduces the loss caused by shutdown or faults.





Competitiveness-Top In The Supply Chain

The most popular product in domestic market

EWB Electric Hoist

Market Share of Key Components **40%**

The data comes from the document of China Heavy Machinery Industry Association Hoist Branch in December 2020



European type hoist

For the world's 1000 high-end customers

Provide more than 200,000 lifting equipment's and services

The top player in the supply chain of European hoist.

We have core and key technology , as well as self-made ability for key components, which can implement import substitution.

Hoist & Open Winch family



EWH

**Electric Wire
Rope Hoist**



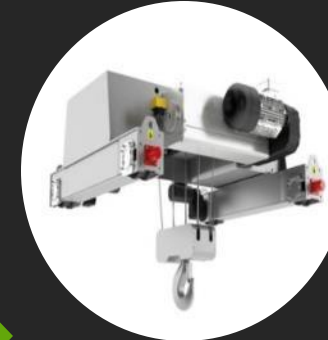
ECH

**Electric Chain
Hoist**



EW

**Electric Open
Winch**



EDR

**Clean Room
Electric Hoist**



EWH EX

**Explosion-proof
Hoist**



ECH Chain hoist



SWL: 250~7500kg

Chain teeth between the chain sockets to make the guide chain smoother

Lifting disc brake, torque limiter

Lifting double speed , up and down limited switch

Imported galvanized chain

In line with the RELEVANT EU directives

Security

The clutch is located in the deceleration to ensure that the weight is held by the brake under any working conditions, and the clutch plays the role of load limitation

Low maintenance cost

Maintenance operations are simpler, faster, and more economical
Brake adjustment is easier
Clutch adjustment is easier



EWH Series
(Single Girder)

Technical Configuration:

- Double-speed lifting motor for 1t~32t hoists; lifting motor in two speed or inverter control
- frequency for 32t~80t hoists
- Electromagnetic disc brake, maintenance-free design
- Supply voltage: 380V/3Ph/50Hz
- Control voltage: 48V
- Lifting limit switch
- Trolley is equipped with variable frequency motor, speed: 5~20m/min
- Protection grade of motor: IP55, insulation grade: F
- Hook set with safety buckles
- Load lifting limiter
- Ambient temperature: -20 °C ~ 40 °C



EWH Series
(Double Girder)



EWH Series
(Single Girder)



Drum

- Use seamless steel tube as raw material and process it by numbers of working procedure.
- Advanced processing methods to ensure concentricity of the drum.
- The depth of rope groove is in compliance with the FEM standard.
- High-strength pressing plates and bolts are fastened on the end of the wire rope to ensure the safety of lifting.

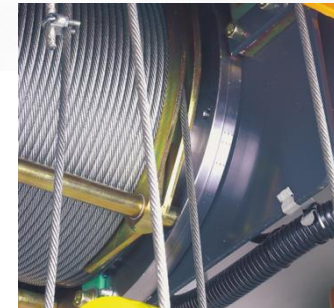


Driving unit

- Motors include F class insulation and IP55 degree of protection as standard.
- Hoist motor is design in three-in-one, compact structure, stable operation, lower energy consumption and longer equipment life.
- Motor duty rating with 60%ED, meets the needs of high-intensity use, and the service life of the brake can reach 1 million times



EWH Series
(Double Girder)



Wire rope

- Wire rope of high-performance with tensile strength up to 2160MPa.
- The surface with galvanized processing for corrosion prevention effectively.
- With good flexibility to ensure wear resistance of the wire rope and prolong its service life.



Single girder wire rope hoist



Lifting drive

Reduce energy consumption by 40%
and increase life span by 280%



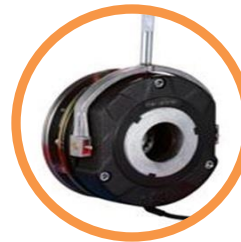
Rope guide

The guide rope is made of polymer engineering plastic, Resistant to wear and tear, Low cost of accessories



Electric cabinet

Safe and reliable, standard and tidy
Schneider configuration
Special line slot line, plug and play design



Brake

Standard electromagnetic brake unit
1.8 times the rated torque design, normally closed disc type
One million full load life



Double girder wire rope hoist

Frame and paint

The frame architecture presents serialization, modularization and lightness. Overall baking paint coating process, paint surface even smooth, strong paint adhesion. Anti-corrosion effect is remarkable, color stability, more than 10 years of life.



Monitor control (Optional)

English and Chinese interface, easy to operate
Used for electric hoist safety monitoring device
Prevent the shutdown accident, the accumulative starting times and the accumulative working time



Cam height limit

CAM type four step limit, accurate positioning,
4 fully adjustable upper and lower limits.
Deceleration operation improves brake life and safety

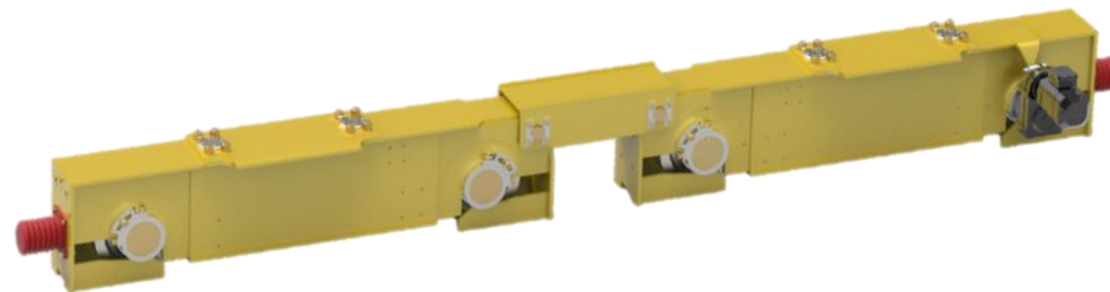
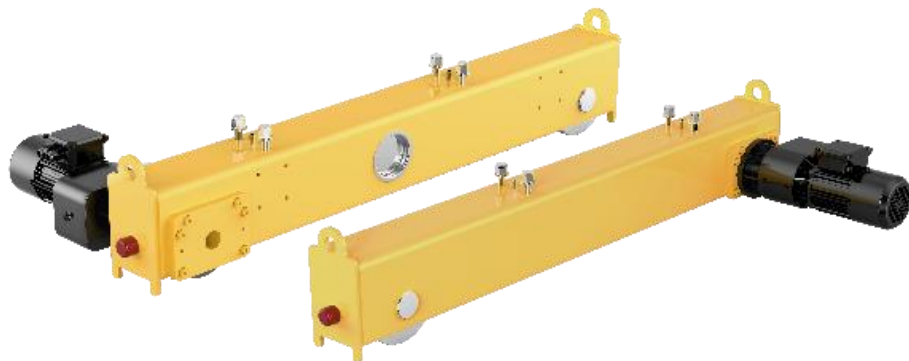


End Beam/Drive

The end beam adopts the one-time positioning drilling and boring processing method to ensure the geometrical tolerance and the dimensional accuracy of the shaft hole; Smooth operation, no gnawing on rails

The bridge wheel is made of high-strength alloy steel (42CrMo)
The installation form adopts the structure of directly installing the wheel through the boring hole

The bridge travelling mechanism adopts a three-in-one drive device and a frequency conversion speed regulation system.
Quiet design, good sealing, no oil leakage





Electronic Control Design

- The interface is designed as a socket, and the installation and maintenance are simple. Strong scalability, optional accessories such as remote control, photoelectric switch, etc. can be expanded according to user requirements;
- The electrical control components are all installed in a special electric control box, and the protection level of the electric control box is IP55, which is effective against dust and moisture;
- The power supply of the trolley adopts the flat cable and the sliding tow cable mechanism;
- Electrical components use well-known foreign brands (such as Schneider, Siemens, etc.);





Control tools



Cabin

The cabin conforms to the principle of ergonomics, has reliable safety protection devices, a comfortable operating environment and a wide field of vision. Adopt advanced welding technology and manufacturing technology to make the entire cab look flat and beautiful



Remote control

The remote control has high reliability and high stability, it has the function of active emergency stop or passive emergency stop, the protection level is IP65, the type is button type or rocker type, the life span is about one million times, and the effective distance is 100~150 meters



Pendant

The standard control form is pendant with two-speed button and emergency brake switch. The pendant cable is a special cable with a connecting wire rope, and the control cable is not subject to tension. The protection level is not lower than IP65, and the button life is not less than 500,000 times

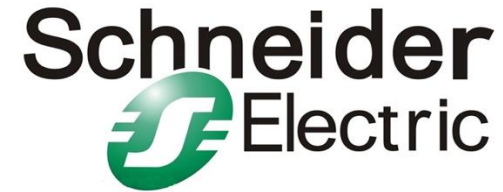


Strategic partner



SEW

The German SEW group is a multinational enterprise specializing in the production of motors, reducer and frequency conversion electronic equipment.



Schneider

(Schneider Electric SA) Founded in 1836, it is one of the world's top 500 companies, Schneider Electric is a global leader in energy efficiency management

03

FACILITIES

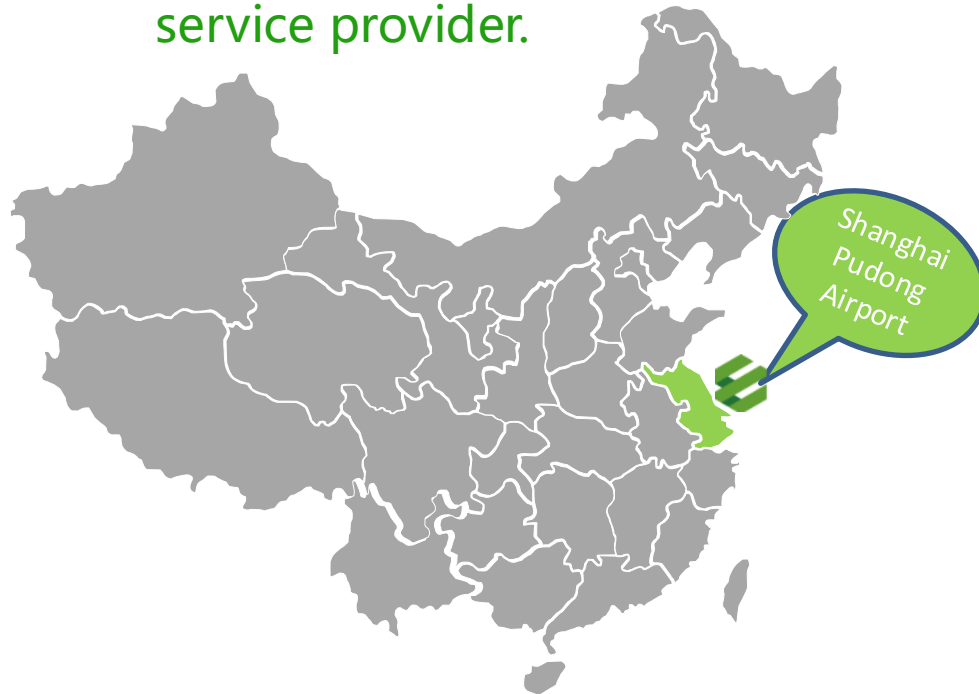
Crane kits factory

Austria RND center



Facilities

10 Global manufacturing bases in China and Europe which make Eurocrane a global well-known professional cranes and material handling product manufacturer and service provider.



Eurocrane Headquarter & Austria RND Factories



China factory address: No.288-388, Fen Yue Road, Foho New & Hi-Tech Industrial Development Zone, Suzhou, Jiangsu China

European factory address: Ganglgutstraße 13, 4050 Traun, Austria



Facilities

3 large production sites in Suzhou , Jiangsu, in economic center of China, the most developed area of China



Main Structure Plant A

Floor Space: 28,000m²
Plant Area: 18,000m²



Main Structure Plant B

Floor Space: 24,000m²
Plant Area: 4,000m²



Assembly Plant C

Floor Space: 119,000m²
Plant Area: 63,000m² (26,000m² in construction)



Hoist Plant

Floor Space: 30,000m²
Plant Area: 22,000m²



Structure Plant

Floor Space: 30,000m²
Plant Area: 22,000m²

- ✓ Easy logistics
- ✓ High-end suppliers
- ✓ International qualified suppliers available
- ✓ Easy access to good engineers and workers



Facilities



Ing. Voith Traun
80 years experience



Design in Austria



CONTROL VFSC2.0

FLEXIBLE SOFTWARE SOLUTIONS OF THE FUTURE

In 2009 we developed the first PLC-based controller.

The development of a new controller generation takes into account the increased demands on a controller and the expanded possibilities through the use of the current TIA Portal programming software.

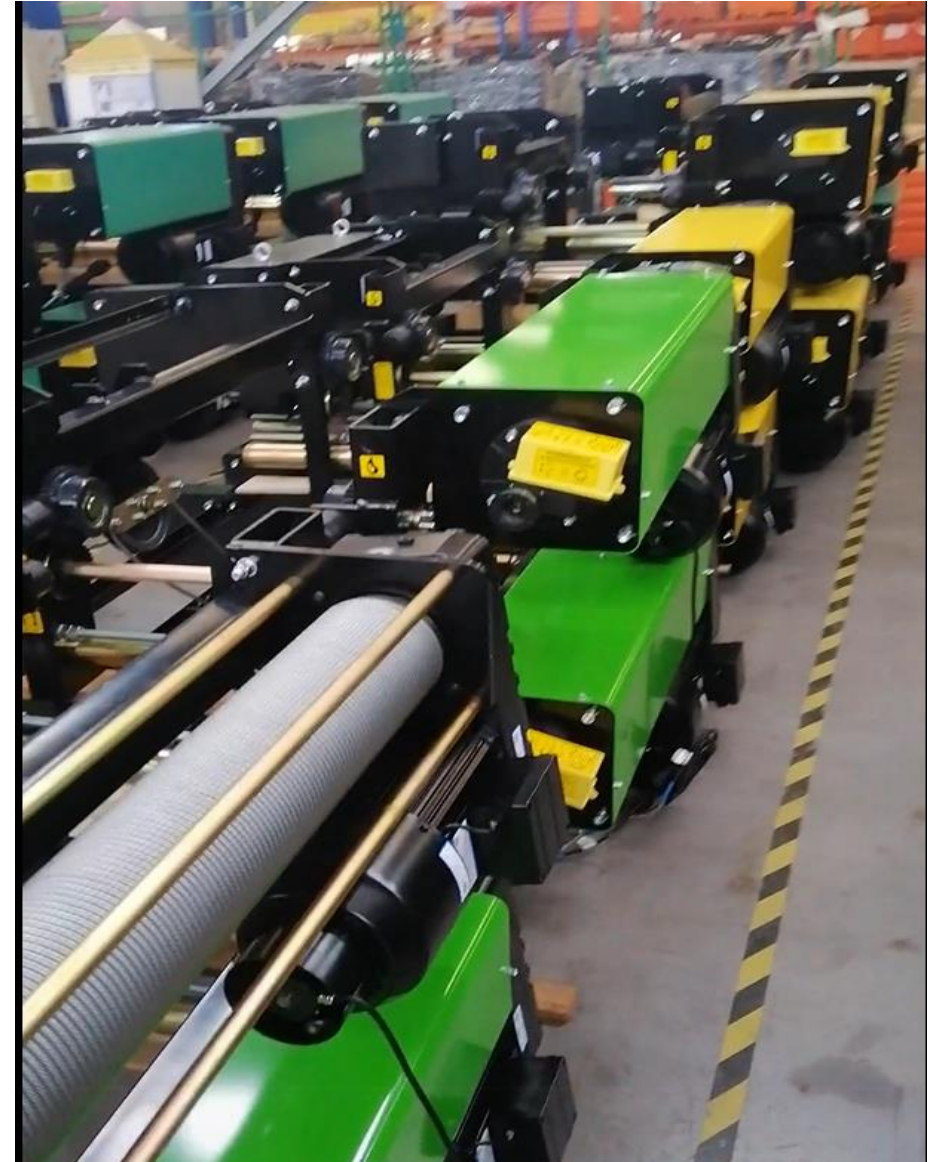
In 2020, the first systems were delivered with the new software VFSC2.0. VFSC2.0 stands for "2nd Generation Voith Flexible Safety Control". The basis of the software is a mature data structure that can be flexibly adapted to the most diverse designs systems.

The software functions ensure short development and commissioning times. Demanding safety functions can also be implemented by using fail-safe CPUs.



The Facilities

Hoist workshop





The Facilities

Production Equipment



Plasma cutting machine

Function: Sheet metal cutting

Advantages:

- 1、Improve productivity
- 2、High cutting accuracy
- 3、Small cutting deformation



Testing center

Function: Used for life testing and performance testing of all parts of new products, Index test of batch products before delivery

Advantages: Ensure that every product of Novocrane factory is 100% qualified



Milling machine

Function: Double girder trolley frame processing

Advantages: Improve the machining accuracy of trolley



Three coordinate detection

Function: Strictly control the precision of parts

Advantages: Intercept the problem in the early stage to ensure the quality of the machine assembled in the later stage is perfect



The Facilities

Workshop





The Facilities

Staff Dormitory & Stadium





Certificate



中华人民共和国
特种设备制造许可明细表
List of Manufacturing License for Special Equipment
People's Republic of China

(起重机械)

编号: TS2410D25-2012

单位名称: 法兰泰克起重机械(苏州)有限公司
制造地址: 江苏省苏州市吴江汾湖经济开发区汾越路北側
经审查, 获准从事下列起重机械的制造:

类型	级别	型式	型号/参数
桥式起重机	A	通用桥式起重机	FWD 型 160t 及以下
	B	电动葫芦桥式起重机	FHD 型 80t 及以下
	B	电动单梁起重机	FHS 型 20t 及以下
	C	电动单梁悬挂起重机	FHU 型 10t 及以下
	C	电动葫芦桥式起重机	FHE 型 2t 及以下
	B	电动葫芦桥式起重机	FHDD 型 64t 及以下
门式起重机	B	电动单梁起重机	FHSD 型 20t 及以下
	C	电动葫芦门式起重机	FHG 型 20t 及以下
旋臂式起重机	C	柱式旋臂式起重机	PCJ 型 5t 及以下
	C	壁式旋臂式起重机	FWJ 型 3.2t 及以下

市批机关: 国家质量监督检验检疫总局 发证机关: 江苏省质量技术监督局
有效期至: 2012 年 11 月 26 日 发证日期: 2008 年 11 月 27 日

国家质量监督检验检疫总局制

中华人民共和国
特种设备制造许可证
Manufacture License of Special Equipment
People's Republic of China

(起重机械)

编号: TS2410D25-2012

单位名称: 法兰泰克起重机械(苏州)有限公司
制造地址: 江苏省苏州市吴江汾湖经济开发区汾越路北側
经审查, 获准从事下列类型起重机械的制造:
桥式起重机、门式起重机、旋臂式起重机
具体的设备级别、型式、型号/参数见明细表。

市批机关: 国家质量监督检验检疫总局 发证机关: 江苏省质量技术监督局
有效期至: 2012 年 11 月 26 日 发证日期: 2008 年 11 月 27 日

国家质量监督检验检疫总局制

中华人民共和国
特种设备制造许可证
Manufacture License of Special Equipment
People's Republic of China
(起重机械)

编号: TS2432428-2019

单位名称: 法兰泰克重工股份有限公司
单位地址: 江苏省吴江市汾湖经济开发区汾越路 288 号、388 号
经审查, 获准从事下列起重机械的制造:

类型	级别	型式	型号/参数
桥式起重机	B	电动单梁起重机	FHS 型 25t 及以下
桥式起重机	B	电动单梁起重机	FHSD 型 20t 及以下
桥式起重机	C	电动单梁起重机	FHSM 型 10t (吊运熔融金属) 及以下
桥式起重机	C	电动单梁起重机	FHUD 型 5+5t 及以下
桥式起重机	C	电动单梁起重机	FHU 型 10t 及以下
门式起重机	B	通用门式起重机	FWGS 型 32t 及以下
门式起重机	B	通用门式起重机	FWGSH 型 35t 及以下
门式起重机	C	通用门式起重机	FWSGH 型 4t (2+2) 及以下
门式起重机	B	电动葫芦门式起重机	FHDG 型 50t 及以下
门式起重机	C	电动葫芦门式起重机	FHGL 型 10t 及以下
门式起重机	C	电动葫芦门式起重机	FHSGD 型 5+5t 及以下
门式起重机	C	电动葫芦门式起重机	FHG 型 20t 及以下
门式起重机	C	电动葫芦门式起重机	FHSG 型 15t 及以下
门式起重机	C	电动葫芦门式起重机	FHSDG 型 8t 及以下

市批机关: 江苏省质量技术监督局 发证机关: 江苏省质量技术监督局
有效期至: 2020 年 11 月 26 日 发证日期: 2016 年 6 月 15 日

第二页共二页

国家质量监督检验检疫总局制

Certificate

TX 特种设备型式试验合格证
No. T83000-24-08-0334

制造单位 法兰泰克起重机械(苏州)有限公司

产品名称 电动单梁起重机

型号规格 PH20-10, 5A3D

产品标准 《桥式起重机型式试验指南》

试验编号 TS00000, 200, 00

覆盖范围 本证书覆盖以下型号规格产品:
PH20H 及以下电动单梁起重机

针对上述产品图样和技术文件审查及样品检测, 确认符合下列标准:
《桥式起重机型式试验指南》

发证日期 2024年8月3日

江苏省特种设备安全监督检验研究院(盖章)

注: (一) 本证书是对设备型式的确证, 对产品本身的安全性与否负责, 且不对符合性材料的产品负责。
(二) 证书持有者有责任保证产品符合标准规定和保证产品与证书材料的一致。

TX 特种设备型式试验合格证
No. T83000-24-08-0333

制造单位 法兰泰克起重机械(苏州)有限公司

产品名称 电动葫芦门式起重机

型号规格 PH20-10, 5A5

产品标准 《门式起重机型式试验指南》

试验编号 TS00000, 20A, 10

覆盖范围 本证书覆盖以下型号规格产品:
PH20H 及以下电动葫芦门式起重机

针对上述产品图样和技术文件审查及样品检测, 确认符合下列标准:
《门式起重机型式试验指南》

发证日期 2024年8月3日

江苏省特种设备安全监督检验研究院(盖章)

注: (一) 本证书是对设备型式的确证, 对产品本身的安全性与否负责, 且不对符合性材料的产品负责。
(二) 证书持有者有责任保证产品符合标准规定和保证产品与证书材料的一致。

CEPROM® S.A.
440240 Satu Mare, str. Fântânele, f.n., Romania
tel. +40.0361.804795; fax +40.0361.804796
www.ceprom.ro; e-mail: ceprom@ceprom.ro

PRODUCT CERTIFICATION BODY

CERTIFICATE OF CONFORMITY
No. 1615-CI-32019

Technical File no. 1615-CI-32019/OUCE-SH-185117

Applicant: NOVOCRANES (SUZHOU) CO., LTD. No.1288, Pangjin Road, Wujiaing Economic and Technological Development Zone, Jiangsu Province, China (215200).	Manufacturer: NOVOCRANES (SUZHOU) CO., LTD. No.1288, Pangjin Road, Wujiaing Economic and Technological Development Zone, Jiangsu Province, China (215200).
---	--

Description of product:

Product name: **ELECTRIC CHAIN HOIST**

Models: **NCH1, NCH2, NCH3, NCH4, NCH5, NCH6, NCH8, NCH10**

Reference standards: **EN ISO 12100:2010, EN 60204-32:2008, EN 14492-2:2006+A1:2009+AC:2010**

Based on our assessment we confirm that the Technical File of the product is in accordance with the technical requirements of the above standards and hence fulfils the technical requirements of the **Machinery Directive 2006/42/EC**

The CE mark as show joined can be used, under the responsibility of the manufacturer or the applicant, after completion of the CE Declaration of Conformity and in accordance with the above directive.

This certificate is only valid for the product and configuration described (annex), in conjunction with the detailed test data and with all applicable legal requirement for the product. Maintaining certification is based on compliance with the requirements of certification contract.

Annex: Product identification – 3 pages

Issuing Date: 28.03.2019
Expiry Date: 27.03.2024

GENERAL MANAGER
eng. Cristian SOPONOS

EUROPEAN UNION
Satu Mare, ROMANIA

CEPROM-CERT Manager
eng. Vasile ZELE

CE

Partial reproduction of this certificate is not allowed
This Certificate of Conformity is valid only if it is published on the site www.ceprom.ro

CEPROM® S.A.
440240 Satu Mare, str. Fântânele, f.n., Romania
tel. +40.0361.804795; fax +40.0361.804796
www.ceprom.ro; e-mail: ceprom@ceprom.ro

PRODUCT CERTIFICATION BODY

CERTIFICATE OF CONFORMITY
No. 1544-CI-32018

Technical File no. 1544-CI-32018/OUCE-SH-184516-03

Applicant: NOVOCRANES (SUZHOU) CO., LTD. No.1288, Pangjin Road, Wujiaing Economic and Technological Development Zone, Jiangsu Province, China(215200).	Manufacturer: NOVOCRANES (SUZHOU) CO., LTD. No.1288, Pangjin Road, Wujiaing Economic and Technological Development Zone, Jiangsu Province, China(215200).
--	---

Description of product:

Product name: **ELECTRIC WIRE ROPE HOIST**

Models: **NWH1, NWH2, NWH3, NWH4, NWH5, NWH6, NWH7, NWH8, NWH9**

Reference standards: **EN ISO 12100:2010, EN 60204-32:2008**

Based on our assessment we confirm that the Technical File of the product is in accordance with the technical requirements of the above standards and hence fulfils the technical requirements of the **Machinery Directive 2006/42/EC**

The CE mark as show joined can be used, under the responsibility of the manufacturer or the importer, after completion of the CE Declaration of Conformity and in accordance with the above directive.

This certificate is only valid for the product and configuration described (annex), in conjunction with the detailed test data and with all applicable legal requirement for the product. Maintaining certification is based on compliance with the requirements of certification contract.

Annex: Product identification – 3 pages

Issuing Date: 17.10.2018
Expiry Date: 16.10.2023

GENERAL MANAGER
eng. Cristian SOPONOS

EUROPEAN UNION
Satu Mare, ROMANIA

CEPROM-CERT Manager
eng. Vasile ZELE

CE

Partial reproduction of this certificate is not allowed
This Certificate of Conformity is valid only if it is published on the site www.ceprom.ro

TX 特种设备型式试验合格证
No. T83000-24-08-0336

制造单位 诺威起重设备(苏州)有限公司

产品名称 钢丝绳电动葫芦

型号规格 NW1000-5

产品标准 《桥式起重机型式试验指南》

试验编号 4005 50

覆盖范围 本证书覆盖以下型号规格产品:
1000kg 及以下钢丝绳电动葫芦

针对上述产品图样和技术文件审查及样品检测, 确认符合下列标准:
《桥式起重机型式试验指南》

发证日期 2024年8月3日

江苏省特种设备安全监督检验研究院(盖章)

注: (一) 本证书是对设备型式的确证, 对产品本身的安全性与否负责, 且不对符合性材料的产品负责。
(二) 证书持有者有责任保证产品符合标准规定和保证产品与证书材料的一致。

TX 特种设备型式试验合格证
No. T83000-24-08-0337

制造单位 法兰泰克起重机械(苏州)有限公司

产品名称 柱式旋臂式起重机

型号规格 PCJ5-2.5X3, 1A5

产品标准 《桥式起重机型式试验指南》

试验编号 VPS0044

覆盖范围 本证书覆盖以下型号规格产品:
PCJ5H 及以下柱式旋臂式起重机

针对上述产品图样和技术文件审查及样品检测, 确认符合下列标准:
《桥式起重机型式试验指南》

发证日期 2024年8月3日

江苏省特种设备安全监督检验研究院(盖章)

注: (一) 本证书是对设备型式的确证, 对产品本身的安全性与否负责, 且不对符合性材料的产品负责。
(二) 证书持有者有责任保证产品符合标准规定和保证产品与证书材料的一致。



04

Technical support

- Customer training
- Quotation system
- Crane kits upgrade
- Tender support
- Full Life Cycle Components



Technical support



Customer Training



Tender support



Online Quotation system



Full Life Cycle spare parts



Crane kits upgrade



Customer training

Through our regular training on how to successfully use Eurocrane products or services in order to meet client satisfaction.

Our technical know-how and many years of experience right from the start. competent advice and our all-embracing repair service with flexible planning and customer-oriented implementation.

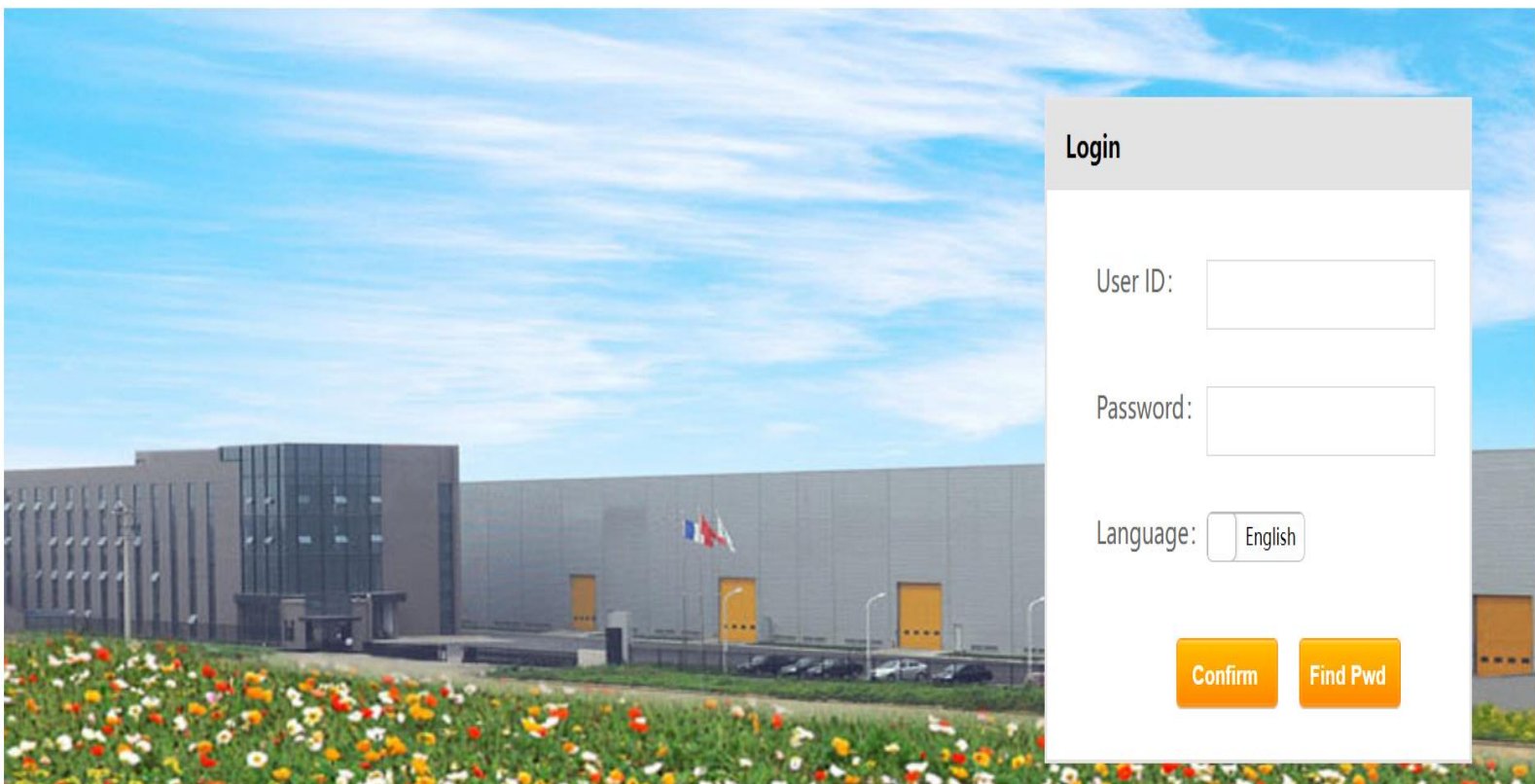




Technical support



QUOTING SYSTEM



Eurocrane quotation system provide our customers the ID to login in.

After Input the Parameters, the system can do the standard technical data, drawing and quotation for the single girder overhead crane and double girder overhead crane.



Online Quotation system

Offer Mana. Change Pwd English Quit

Crane basic info

Type: Single girder overhead cra

Capacity: 10000 kg

Lifting height: 15 m

Number of trolley: 1

Crane span: 24.2 m

Crane rail type: P22

Crane standard: GB

Duty class: A3

Double beam walking platform: Long walking platform

Main voltage: 380 V

Frequency: 50 Hz

Control method: Pendant ☒ Remote control ☐ Cabin ☐

Pushbutton

A/S

Building dimension

Data(input):

Lifting height h: 15000 mm

Pendent to gr... 1000 mm

The distance fr... 0 mm

Crane height a(option): 1627 mm

Upper safety d... 200 mm

Calculate

Data(output)

Rail to ground distance b: mm

Left end beam width dl: 155 mm

Hook left limit distance h1: 1303 mm

C demension c: 740 mm

Right end beam width dr: 155 mm

Hook right limit distance h2: 1000 mm

Sketch



Spare parts are sufficient without worries

In the use of the equipment, we may encounter the distress of failing to purchase accessories in time after the equipment is shut down or the manufacturer is unable to provide accessories. The spare parts warehouse of Eurocrane headquarters, central regions across the country and major service networks around the world have prepared sufficient, high-quality and guaranteed crane spare parts inventory, which improves the equipment utilization rate of customers and reduces their worries.



05

Global distribution



◆ Global Distributors

 **EUROCRANE**

Thai



Bulgaria



Germany



Singapore



Netherland



Spain



Denmark



South Africa



Russia



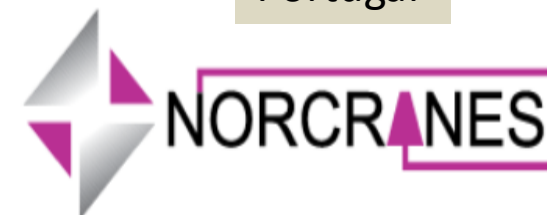
Philippines



Singapore



Portugal



Morocco



INDO



Spain



Russia



Turkey



Thailand



Belarus



Indotech Sukses Mandiri

Indonesia



Global Distribution

What we will benefit each other with global partner?

Win-Win system

After sales

full range life cycle spare parts
for the customer service

Strong Products

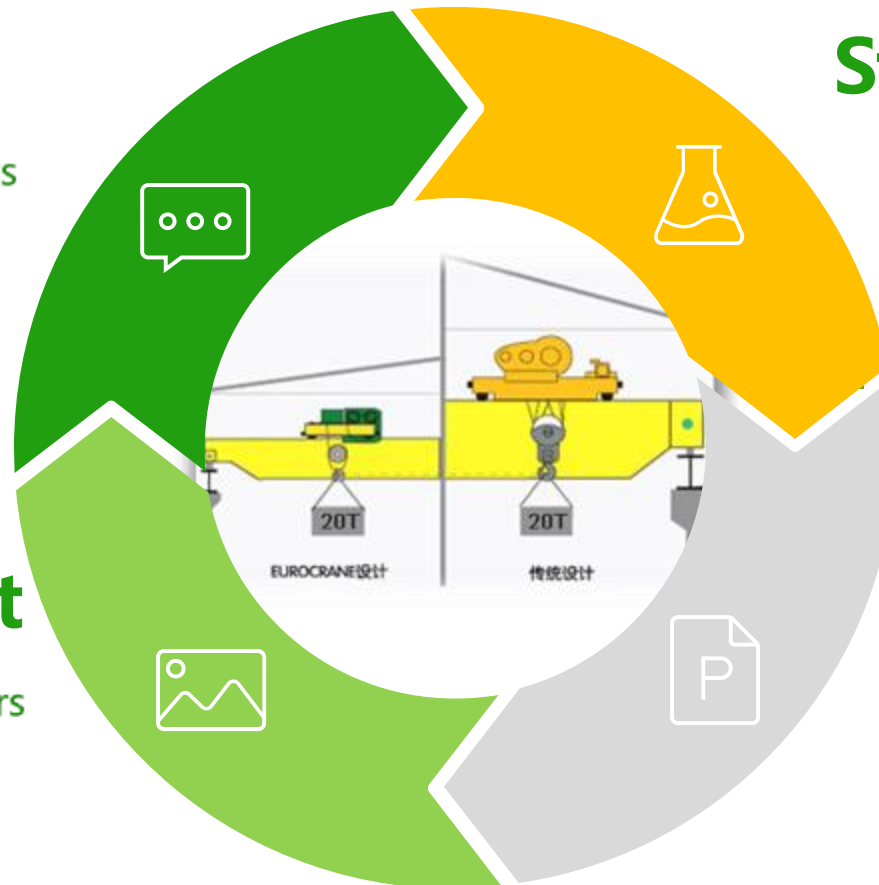
R&D investment
Austria center
European standards hoists

Project support

Introduce business to partners
Non standard project ability

Flexible term

Payment, delivery time, price





Key Customers





Key Customers



UPM



Brilliance Auto
华晨汽车



CHEN MING GROUP



storaenso



thyssenkrupp

sinoma



3M



QNPC



CATERPILLAR



SANY



CSR

HELI



RENAULT
Passion for life



东风 HONDA



Global Castings
Your partner in renewable energy components



Thank you

www.eurocraneglobal.com

contact@eurocrane.com.cn

