

YOUTH MOBILE CRISIS RESPONSE COALITION

RESOURCE GUIDE



2025 Edition
Regions 2 & 9
Louisiana

ABOUT THE YMCR COALITION

OUR MISSION

TO PROVIDE COMPASSIONATE CRISIS COUNSELING AND INTERVENTION SERVICES TO CHILDREN, YOUTH, AND THEIR FAMILIES DURING TIMES OF ACUTE CRISES.

OUR VISION

TO GUIDE FAMILIES THROUGH CHALLENGING TIMES BY OFFERING SUPPORT AND EMPOWERING THEM TO NAVIGATE THEIR OWN PATHS TO RESOLUTION.

WHAT WE DO

THE YMCR COALITION BRINGS TOGETHER SCHOOLS, HEALTHCARE PROVIDERS, EMERGENCY RESPONDERS, BEHAVIORAL HEALTH SPECIALISTS, AND COMMUNITY ORGANIZATIONS ACROSS REGIONS 2 AND 9. TOGETHER, WE WORK TO STRENGTHEN THE SAFETY NET FOR YOUNG PEOPLE AND ENSURE THAT FAMILIES IN NEED CAN ACCESS THE RIGHT SERVICES AT THE RIGHT TIME.

THIS GUIDE CONNECTS FAMILIES AND PROVIDERS TO ESSENTIAL LOCAL RESOURCES IN EDUCATION, HEALTHCARE, CRISIS RESPONSE, PREVENTION, AND MORE.

HOW TO USE THIS GUIDE

THIS GUIDE IS DIVIDED BY REGION AND ORGANIZED BY SERVICE TYPE — SCHOOLS, HOSPITALS, OUTPATIENT SERVICES, EMERGENCY SERVICES, AND MORE. EACH LISTING INCLUDES KEY CONTACT INFORMATION, A BRIEF DESCRIPTION OF SERVICES, AND WEBSITE LINKS.

YOU CAN USE THIS GUIDE TO:

- REFER PATIENTS OR FAMILIES TO APPROPRIATE SERVICES
- CONNECT DIRECTLY WITH PARTNER AGENCIES
- STAY INFORMED ABOUT YOUTH-FOCUSED RESOURCES IN YOUR AREA



TABLE OF CONTENTS

REGION 2

SCHOOL SYSTEMS	PAGE 5
----------------	--------

HOSPITALS	PAGE 7
-----------	--------

BEHAVIORAL HEALTH	PAGE 10
-------------------	---------

ADDICTION & RECOVERY	PAGE 11
----------------------	---------

RESIDENTIAL & OTHER SERVICES	PAGE 13
---------------------------------	---------

TRANSPORTATION	PAGE 14
----------------	---------

ENFORCEMENT SERVICES	PAGE 15
----------------------	---------

EMERGENCY SERVICES	PAGE 16
--------------------	---------

OTHER ORGANIZATIONS	PAGE 17
---------------------	---------

REGION 9

SCHOOL SYSTEMS	PAGE 19
----------------	---------

HOSPITALS	PAGE 20
-----------	---------

EMERGENCY SERVICES	PAGE 21
--------------------	---------

BEHAVIORAL HEALTH	PAGE 22
-------------------	---------

RESIDENTIAL AND OTHER SUPPORT	PAGE 24
----------------------------------	---------

TRANSPORTATION SERVICES	PAGE 25
----------------------------	---------

COURTS	PAGE 26
--------	---------

OTHER ORGANIZATIONS	PAGE 27
---------------------	---------

ACKNOWLEDGMENTS	PAGE 30
-----------------	---------

REGION 2

- EAST BATON ROUGE PARISH
- WEST BATON ROUGE PARISH
- IBERVILLE PARISH
- ASCENSION PARISH
- WEST FELICIANA PARISH
- EAST FELICIANA PARISH
- POINT COUPEE PARISH



Source: Louisiana Department of Health (LDH)



EAST BATON ROUGE PARISH SCHOOLS

CONTACT PERSON: STACEY DUPRE,
DISTRICT SUPPORT FOR MENTAL &
PHYSICAL HEALTH

ADDRESS: 1050 SOUTH FOSTER DRIVE,
BATON ROUGE, LA

EMAIL: SDUPRE@EBRSCHOOLS.ORG

PHONE: [225-200-5807](tel:225-200-5807)

DEMOGRAPHICS SERVED: STUDENTS PRE-
K-12 AND THEIR FAMILIES

SERVICES OFFERED: EDUCATIONAL
SERVICES

WEBSITE: [HTTPS://EBRSCHOOLS.ORG/](https://EBRSCHOOLS.ORG/)



**WEST BATON ROUGE PARISH
SCHOOLS**

CONTACT PERSON: JACKIE MENDOZA,
DISTRICT SCHOOL SOCIAL WORKER

ADDRESS: 3761 ROSEDALE ROAD,
PORT ALLEN, LA 70767

EMAIL:

JACKIE.MENDOZA@WBRSCHOOLS.NET

PHONE: [225-343-8405](tel:225-343-8405)

POPULATION SERVED: STUDENTS &
FAMILIES

SERVICES OFFERED: EDUCATIONAL
SERVICES

WEBSITE:

[HTTPS://WWW.WBRSCHOOLS.NET/](https://WWW.WBRSCHOOLS.NET/)



ASCENSION PARISH SCHOOLS

ADDRESS: 1100 WEBSTER ST,
DONALDSONVILLE, LA 70346

PHONE: [225-391-7273](tel:225-391-7273)

DEMOGRAPHICS SERVED: STUDENTS PRE-
K-12 AND THEIR FAMILIES

SERVICES OFFERED: EDUCATIONAL
SERVICES

WEBSITE:

[HTTPS://WWW.ASCENSIONSCHOOLS.ORG/](https://WWW.ASCENSIONSCHOOLS.ORG/)



ZACHARY COMMUNITY SCHOOL DISTRICT

CONTACT PERSON: AENEID MASON,
DIRECTOR OF STUDENT SUPPORT SERVICES

ADDRESS: 3755 CHURCH ST, ZACHARY, LA
70791

EMAIL:

AENEID.MASON@ZACHARYSCHOOLS.ORG

PHONE: [\(225\) 658-4969](tel:225-658-4969)

DEMOGRAPHICS SERVED: STUDENTS PRE-
K-12 AND THEIR FAMILIES

SERVICES OFFERED: EDUCATIONAL
SERVICES

WEBSITE: [HTTPS://ZACHARYSCHOOLS.ORG/](https://ZACHARYSCHOOLS.ORG/)





West Feliciana Parish Schools

Learning Today, Leading Tomorrow!

WEST FELICIANA PARISH SCHOOLS

CONTACT PERSON: BECKY JOHNSON,
SUPERVISOR OF SPECIAL EDUCATION

ADDRESS: 4727 FIDELITY STREET, ST.
FRANCISVILLE, LA 70775

EMAIL: JOHNSONR@WFPSB.ORG

PHONE: [225-635-3891](tel:225-635-3891)

POPULATION SERVED: STUDENTS &
FAMILIES

SERVICES OFFERED: EDUCATIONAL
SERVICES

WEBSITE: [HTTPS://WWW.WFPSB.ORG/](https://www.wfpsb.org/)



East Feliciana Public Schools

EAST FELICIANA PARISH SCHOOLS

ADDRESS: 12732 SILLIMAN STREET,
CLINTON, LA 70722

PHONE: [225-683-8277](tel:225-683-8277)

POPULATION SERVED: STUDENTS &
FAMILIES

SERVICES OFFERED: EDUCATIONAL
SERVICES

WEBSITE: [HTTPS://WWW.EFSCHOOLS.NET/](https://www.efschools.net/)



IBERVILLE PARISH SCHOOLS

CONTACT PERSON: ANDREA YOUNG, NURSE
COORDINATOR

ADDRESS: 58060 PLAQUEMINE STREET,
PLAQUEMINE, LA 70764

EMAIL: ANDREAYOUNG@IPSB.EDU

PHONE: [225-687-4341](tel:225-687-4341)

POPULATION SERVED: STUDENTS &
FAMILIES

SERVICES OFFERED: EDUCATIONAL
SERVICES

WEBSITE: IPSB.NET



Pointe Coupee Parish School System

POINT COUPEE PARISH SCHOOLS

CONTACT PERSONS: KIM CANEZARO,
SUPERINTENDENT

MARY WELLS, SUPERVISOR

LASHONDA VICTORIAN, SUPERVISOR,
EXCEPTIONAL STUDENT SERVICES & CHILD
WELFARE

ADDRESS: 337 NAPOLEON STREET, NEW
ROADS, LA 70760

EMAILS: KIM.CANEZARO@PCPSB.NET,

MARY.WELLS@PCPSB.NET,

LASHONDA.VICTORIAN@PCPSB.NET

PHONE: [225-638-8674](tel:225-638-8674)

POPULATION SERVED: STUDENTS &
FAMILIES

SERVICES OFFERED: EDUCATIONAL
SERVICES

WEBSITE: [HTTPS://WWW.PCPSB.NET/](https://www.pcpsb.net/)





LANE REGIONAL MEDICAL CENTER

ADDRESS: 6300 MAIN ST, ZACHARY,
LA 70791

PHONE: 225-658-4335

DEMOGRAPHICS SERVED: ALL AGES

SERVICES OFFERED: EMERGENCY
SERVICES

WEBSITE:

[HTTPS://WWW.LANERM.C.ORG](https://www.lanermc.org)



Baton Rouge General

BATON ROUGE GENERAL – MID CITY

ADDRESS: 3600 FLORIDA BLVD,
BATON ROUGE, LA 70806

PHONE: 225-387-7000

DEMOGRAPHICS SERVED: ALL AGES

SERVICES OFFERED: EMERGENCY
SERVICES

WEBSITE:

[HTTPS://WWW.BRGENERAL.ORG/LOCA
TIONS/BATON-ROUGE-GENERAL-MID-
CITY](https://www.brgeneral.org/locations/baton-rouge-general-mid-city)



Baton Rouge General

BATON ROUGE GENERAL – ASCENSION

ADDRESS: 14105 LA-73, PRAIRIEVILLE,
LA 70769

PHONE: 225-402-2600

DEMOGRAPHICS SERVED: ALL AGES

SERVICES OFFERED: EMERGENCY
SERVICES

WEBSITE:

[HTTPS://WWW.BRGENERAL.ORG/LOCATI
ONS/BATON-ROUGE-GENERAL-
ASCENSION](https://www.brgeneral.org/locations/baton-rouge-general-ascension)



Baton Rouge General

**BATON ROUGE GENERAL –
BLUEBONNET**

ADDRESS: 8585 PICARDY AVE, BATON
ROUGE, LA 70809

PHONE: 225-763-4000

DEMOGRAPHICS SERVED: ALL AGES

SERVICES OFFERED: EMERGENCY
SERVICES

WEBSITE:

[HTTPS://WWW.BRGENERAL.ORG/LOCATI
ONS/BATON-ROUGE-GENERAL-
BLUEBONNET](https://www.brgeneral.org/locations/baton-rouge-general-bluebonnet)





**OUR LADY OF THE LAKE REGIONAL
MEDICAL CENTER**

ADDRESS: 5000 HENNESSY BLVD,
BATON ROUGE, LA 70808

PHONE: 225-765-1996

DEMOGRAPHICS SERVED: ALL AGES

SERVICES OFFERED: EMERGENCY
DEPARTMENT

WEBSITE:

[HTTPS://WWW.FMOLHS.ORG/LOCATIONS/GREATER-BATON-ROUGE/OUR-LADY-OF-THE-LAKE-REGIONAL-MEDICAL-CENTER](https://www.fmolhs.org/locations/greater-baton-rouge/our-lady-of-the-lake-regional-medical-center)



**OUR LADY OF THE LAKE ASCENSION
(ST. ELIZABETH)**

ADDRESS: 1125 LA-30 W, GONZALES, LA
70737

PHONE: 225-647-5000

DEMOGRAPHICS SERVED: ALL AGES

SERVICES OFFERED: EMERGENCY
DEPARTMENT

WEBSITE:

[HTTPS://WWW.FMOLHS.ORG/LOCATIONS/GREATER-BATON-ROUGE/OUR-LADY-OF-THE-LAKE-ASCENSION](https://www.fmolhs.org/locations/greater-baton-rouge/our-lady-of-the-lake-ascension)



OUR LADY OF THE LAKE NORTH

ADDRESS: 5439 AIRLINE HWY, BATON
ROUGE, LA 70805

PHONE: 225-358-2525

DEMOGRAPHICS SERVED: ALL AGES

SERVICES OFFERED: EMERGENCY
DEPARTMENT

WEBSITE:

[HTTPS://WWW.FMOLHS.ORG/LOCATIONS/GREATER-BATON-ROUGE](https://www.fmolhs.org/locations/greater-baton-rouge)



**OUR LADY OF THE LAKE CHILDREN'S
HOSPITAL**

ADDRESS: 8300 CONSTANTIN BLVD,
BATON ROUGE, LA 70809

PHONE: 225-374-4325

DEMOGRAPHICS SERVED: CHILDREN

SERVICES OFFERED: PEDIATRIC
EMERGENCY DEPARTMENT

WEBSITE:

[HTTPS://WWW.FMOLHS.ORG/SERVICES/CHILDRENS-HEALTH](https://www.fmolhs.org/services/childrens-health)





WEST FELICIANA HOSPITAL

ADDRESS: 5266 COMMERCE ST, ST.
FRANCISVILLE, LA 70775

PHONE: 225-635-3811

DEMOGRAPHICS SERVED: ALL AGES

SERVICES OFFERED: EMERGENCY
DEPARTMENT

WEBSITE: [HTTPS://WWW.WFPH.ORG](https://www.wfph.org)



WEST ASCENSION PARISH HOSPITAL

ADDRESS: 301 MEMORIAL DR,
DONALDSONVILLE, LA 70346

PHONE: 225-473-7931

DEMOGRAPHICS SERVED: ALL AGES

SERVICES OFFERED: EMERGENCY
DEPARTMENT

WEBSITE: [HTTPS://WESTAPH.ORG](https://westaph.org)



POINT COUPEE GENERAL HOSPITAL

ADDRESS: 2202 FALSE RIVER DR,
NEW ROADS, LA 70760

PHONE: 225-638-6331

DEMOGRAPHICS SERVED: ALL AGES

SERVICES OFFERED: EMERGENCY
DEPARTMENT

WEBSITE: [HTTPS://PCGH.ORG](https://pcgh.org)



OCHSNER MEDICAL CENTER – BATON ROUGE

ADDRESS: 17000 MEDICAL CENTER DR,
BATON ROUGE, LA 70816

PHONE: 225-752-2470

DEMOGRAPHICS SERVED: ALL AGES

SERVICES OFFERED: EMERGENCY
DEPARTMENT

WEBSITE:

[HTTPS://WWW.OCHSNER.ORG/LOCATIO
NS/OCHSNER-MEDICAL-CENTER-BATON-
ROUGE](https://www.ochsner.org/location/ochsner-medical-center-baton-rouge)



OUR LADY OF THE LAKE ASSUMPTION COMMUNITY HOSPITAL

ADDRESS: 135 HIGHWAY 402, NAPOLEONVILLE LA 70390

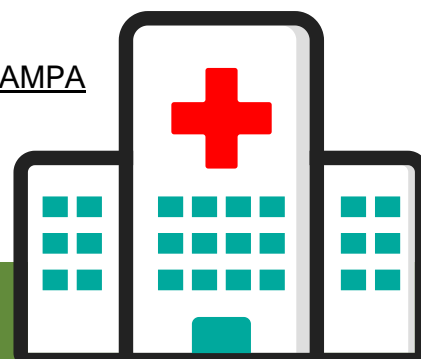
PHONE: 985-369-3600

DEMOGRAPHICS SERVED: ALL AGES

SERVICES OFFERED: EMERGENCY DEPARTMENT

WEBSITE: [HTTPS://WWW.FMOLHS.ORG/LOCATIONS/GREATER-
BATON-ROUGE/OUR-LADY-OF-THE-LAKE-ASSUMPTION-
COMMUNITY-HOSPITAL?](https://www.fmolhs.org/locations/greater-baton-rouge/our-lady-of-the-lake-assumption-community-hospital?utm_source=google&utm_medium=listing&utm_campaign=gmb)

[UTM_SOURCE=GOOGLE&UTM_MEDIUM=LISTING&UTM_CAMPA
IGN=GMB](https://www.fmolhs.org/locations/greater-baton-rouge/our-lady-of-the-lake-assumption-community-hospital?utm_source=google&utm_medium=listing&utm_campaign=gmb)





**Franciscan
Missionaries
of Our Lady**
HEALTH SYSTEM

**TAU CENTER – OLOL HOSPITAL BATON
ROUGE**

CONTACT PERSON: JOSH PRIMEAUX,
DIRECTOR OF SOCIAL SERVICES

ADDRESS: 8080 MARGARET ANN AVE,
BATON ROUGE, LA 70809

EMAIL:

JOSHUA.PRIMEAUX@FMOLHS.ORG

PHONE: (225) 765-6005

AGES SERVED: ALL AGES

WEBSITE:

[HTTPS://WWW.FMOLHS.ORG/LOCATION
S/GREATER-BATON-ROUGE/TAU-
CENTER](https://www.fmolhs.org/location/s/greater-baton-rouge/tau-center)



**THE MAPLES – BATON ROUGE &
HAMMOND**

PROGRAM AREA: BEHAVIORAL HEALTH

CONTACT PERSON: JANA HAMILTON,
MARKETING DIRECTOR

ADDRESS: 15555 GEORGE O'NEAL RD,
BATON ROUGE, LA 70817

PHONE: (225) 681-3224

EMAIL: JANA@THEMAPLESBR.COM

AGES SERVED: TEENAGE GIRLS

WEBSITE: [HTTPS://THEMAPLESBR.COM/](https://themaplesbr.com/)



GENESIS BEHAVIORAL

CONTACT PERSON: HANNAH
HOPKINS

ADDRESS: 8714 JEFFERSON HWY #A,
BATON ROUGE, LA 70809

EMAIL:

HANNAH@GENESISHOLISTICBR.COM

PHONE: (225) 327-1704

AGES SERVED: ALL AGES

SERVICES OFFERED: MENTAL
HEALTH (MH), SUBSTANCE USE
DISORDERS (SUD), INTENSIVE
OUTPATIENT PROGRAM (IOP),
COUPLES, GROUP THERAPY

WEBSITE:

[HTTPS://GENESISHOLISTICBR.COM/](https://genesisholisticbr.com/)



OCEANS HEALTHCARE

OCEANS WRAPAROUND CSOC

ADDRESS: 11135 FLORIDA BLVD.,
BATON ROUGE, LA 70815

EMAIL:

[BATONROUGEINFO@OCEANSHEALTHCA
RE.COM](mailto:BATONROUGEINFO@OCEANSHEALTHCARE.COM)

PHONE: (225) 356-7030

AGES SERVED: CHILDREN AND FAMILIES

SERVICES OFFERED: WRAPAROUND

WEBSITE:

[HTTPS://OCEANSHEALTHCARE.COM/OH
C-LOCATION/BATON-ROUGE-SOUTH/](https://oceanshealthcare.com/oh-c-location/baton-rouge-south/)





**SAMHSA (SUBSTANCE ABUSE AND
MENTAL HEALTH SERVICES
ADMINISTRATION)**

PROGRAM AREA: NATIONAL SUBSTANCE
ABUSE & MENTAL HEALTH SUPPORT

PHONE: 1-800-662-4357

WEBSITE: HTTPS://FINDTREATMENT.GOV

SERVICES OFFERED: NATIONAL HELPLINE
PROVIDING TREATMENT, REFERRAL, AND
INFORMATION 24/7. ONLINE ASSISTANCE
AVAILABLE TO FIND A TREATMENT CENTER
NEAR YOU.



Substance Abuse and Mental Health
Services Administration

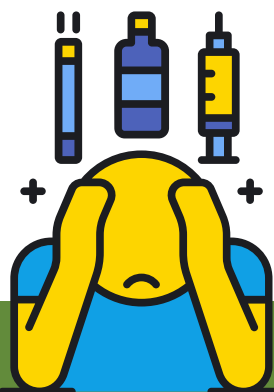
**SAMHSA (SUBSTANCE ABUSE AND
MENTAL HEALTH SERVICES
ADMINISTRATION)**

PROGRAM AREA: NATIONAL SUBSTANCE
ABUSE & MENTAL HEALTH SUPPORT

PHONE: 1-800-662-4357

WEBSITE: HTTPS://FINDTREATMENT.GOV

SERVICES OFFERED: NATIONAL HELPLINE
PROVIDING TREATMENT, REFERRAL, AND
INFORMATION 24/7. ONLINE ASSISTANCE
AVAILABLE TO FIND A TREATMENT CENTER
NEAR YOU.



**SMOKING CESSATION COUNSELING –
FREE**

PROGRAM AREA: SMOKING CESSATION
& TOBACCO USE SUPPORT

PHONE: (985) 730-7166

WEBSITE: [HTTPS://QUITWITHUSLA.ORG](https://quitwithusla.org)

SERVICES OFFERED: FREE
MEDICATIONS, NICOTINE PATCHES,
INDIVIDUAL COUNSELING, AND GROUP
COUNSELING TO HELP QUIT SMOKING.

**VOCATIONAL REHABILITATION SERVICES –
BATON ROUGE**

PROGRAM AREA: VOCATIONAL &
EMPLOYMENT SUPPORT

ADDRESS: 950 NORTH 22ND STREET, BATON
ROUGE, LA 70802

PHONE: 1-800-737-2959

EMAIL: MSCHEXNAYDER@LWC.LA.GOV

WEBSITE:
[HTTPS://WWW.LAWORKS.NET/WORKFORCEDEV/LRS/LRS_REHABILITATION.ASP](https://www.laworks.net/workforcedev/lrs/lrs_rehabilitation.asp)

SERVICES OFFERED: THE PROGRAM
PROVIDES COUNSELORS TO ASSIST THOSE
WHO HAVE SUD/ODU OR MENTAL HEALTH
DIAGNOSES IN FINDING A JOB; MAY INCLUDE
TUITION FOR CONTINUING EDUCATION.



REALITY HOUSE – BATON ROUGE

PROGRAM AREA: RESIDENTIAL TREATMENT
FOR WOMEN WITH SUBSTANCE USE
DISORDERS

ADDRESS: 2056 NORTH BLVD, BATON ROUGE,
LA 70806

PHONE: (225) 343-3438

WEBSITE:
[HTTPS://WWW.LAHEALTHANDREHAB.ORG/REALITY-HOUSE](https://www.lahealthandrehab.org/reality-house)

SERVICES OFFERED: RESIDENTIAL
TREATMENT FOR WOMEN WITH SUBSTANCE
USE DISORDERS, INCLUDING THOSE WHO
ARE PREGNANT OR HAVE DEPENDENT
CHILDREN. SERVICES FOCUS ON
DEVELOPING AND MAINTAINING A HEALTHY,
ALCOHOL- AND DRUG-FREE LIFESTYLE WITH
EMPHASIS ON COMPASSIONATE ATTENTION
TO GENDER-SPECIFIC ISSUES.



CENLA/PHASE II FOR WOMEN – PINEVILLE

PROGRAM AREA: SUBSTANCE USE
TREATMENT

PHONE: TEL:+13184415953

SERVICES OFFERED: RESIDENTIAL
TREATMENT FOR WOMEN, SUPPORTS
PREGNANT OR POSTPARTUM WOMEN AND
CHILDREN, INDIVIDUAL AND GROUP
THERAPY

THE GRACE PROGRAM – BATON ROUGE

PROGRAM AREA: SUBSTANCE USE
TREATMENT FOR PREGNANT WOMEN

PHONE: (225) 924-8574

WEBSITE:

[HTTP://WWW.WOMANS.ORG/OUR-
SERVICES/MOTHERAND-
BABY/PREGNANCY-AND-
CHILDBIRTH/OPIOID-ADDICTION-PROGRAM](http://WWW.WOMANS.ORG/OUR-SERVICES/MOTHERAND-BABY/PREGNANCY-AND-CHILDBIRTH/OPIOID-ADDICTION-PROGRAM)

SERVICES OFFERED: SUPPORTS
PREGNANT WOMEN AND THEIR BABIES
WITH PRENATAL CARE, ADDICTION
TREATMENT, AND PARENTING EDUCATION



MEDICAID TRANSPORTATION – REGION 2

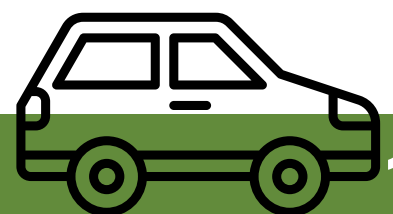
PROGRAM AREA: MEDICAID

TRANSPORTATION SERVICES

HOURS: 7:00 AM – 7:00 PM, MUST
ARRANGE 48 HOURS IN ADVANCE

SERVICES / CONTACT:

- **AETNA:** ONE CALL – 1-877-917-4150
- **HEALTHY BLUE:** MEDITRANS – 1-866-430-1101
- **AMERIHEALTH:** SOUTHEASTRANS – 1-888-913-0364
- **LAHCC:** LOGISTICARE – 1-855-369-3723
- **UHC:** LOGISTICARE – 1-866-726-1472
- **NO PLAN:** 1-855-325-7626





OFFICE OF JUVENILE JUSTICE – BATON ROUGE REGION

ADDRESS: 660 N. FOSTER DRIVE, SUITE B-100, BATON ROUGE, LA 70806

EMAIL: DAWNITA.HODGE@LA.GOV

PHONE: (225) 726-5983

POPULATION SERVED: EAST BATON ROUGE, WEST BATON ROUGE, IBERVILLE, POINTE COUPEE, EAST AND WEST FELICIANA PARISHES

SERVICES OFFERED: SUPERVISION OF YOUTH ON PROBATION/PAROLE OR IN CUSTODY OF OJJ

WEBSITE: [HTTPS://WWW.OJJ.LA.GOV/](https://www.ojj.la.gov/)





DCFS (DEPARTMENT OF CHILDREN AND FAMILY SERVICES)

CONTACT PERSON: KELLYE WORLEY, FOSTER PARENT RECRUITMENT AND SUPPORT CONSULTANT

ADDRESS: 1120 GOVERNMENT ST, BATON ROUGE, LA

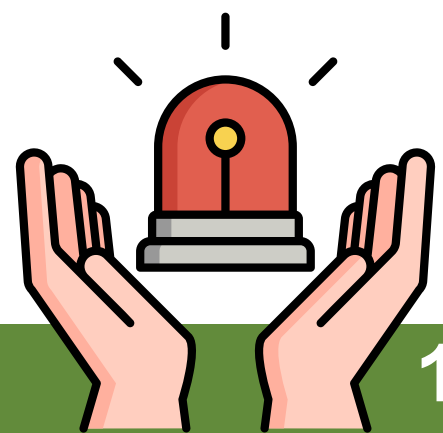
EMAIL: KELLYE.WORLEY.DCFS@LA.GOV

PHONE: [\(225\) 471-2046](tel:(225)471-2046)

POPULATION SERVED: FOSTER FAMILIES

SERVICES OFFERED: FOSTER PARENT RECRUITMENT AND SUPPORT

WEBSITE: [HTTPS://WWW.DCFS.LA.GOV/](https://www.dcfslouisiana.gov/)





WELL-AHEAD LA (REGION 2)

CONTACT PERSON: ELENA KEEGAN, REGION 2

WELLSPOT REPRESENTATIVE

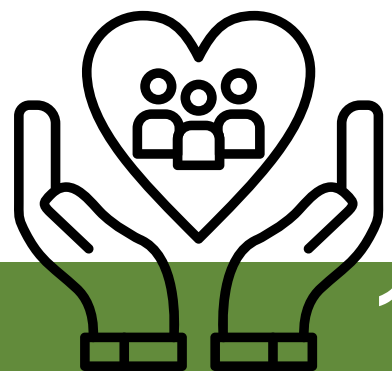
EMAIL: ELENA.KEEGAN@LA.GOV

PHONE: [225-405-8300](tel:225-405-8300)

POPULATION SERVED: REGION 2 PARISHES

WEBSITE: [HTTPS://WELLAHEADLA.COM/](https://wellaheadla.com/)

NOTES: HELPS SHARE WELLNESS RESOURCES;
NOT DIRECT YOUTH SERVICES



REGION 9

- LIVINGSTON PARISH
- ST. HELENA PARISH
- ST. TAMMANY PARISH
- TANGIPAHOA PARISH
- WASHINGTON PARISH



Source: Louisiana Department of Health (LDH)



TANGIPAHOA PARISH SCHOOL SYSTEM

ADDRESS: 59656 PULESTON ROAD,
AMITE, LA 70422

PHONE: (985) 748-7153

POPULATION SERVED: PRE-K
THROUGH 12TH GRADE STUDENTS

SERVICES OFFERED: PUBLIC K-12
EDUCATIONAL SERVICES

WEBSITE:
[HTTPS://WWW.TANGISCHOOLS.ORG/](https://www.tangischools.org/)



ST. TAMMANY PARISH PUBLIC SCHOOL SYSTEM

ADDRESS: C.J. SCHOEN
ADMINISTRATIVE COMPLEX, 321 NORTH
THEARD ST., COVINGTON, LA 70433

PHONE: (985) 892-2276

POPULATION SERVED: PRE-K THROUGH
GRADE 12 ACROSS 55 SCHOOLS

SERVICES OFFERED: PUBLIC K-12
EDUCATIONAL SERVICES

WEBSITE: [HTTPS://WWW.STPSB.ORG/](https://www.stpsb.org/)



WASHINGTON PARISH SCHOOL SYSTEM

ADDRESS: 617 MAIN ST,
FRANKLINTON, LA 70438

PHONE: (985) 839-7769

POPULATION SERVED: PK-12
STUDENTS ACROSS WASHINGTON
PARISH

SERVICES OFFERED: PUBLIC K-12
EDUCATIONAL SERVICES

WEBSITE: [HTTPS://WWW.WPSB.ORG/](https://www.wpsb.org/)



LIVINGSTON PARISH PUBLIC SCHOOLS

ADDRESS: 13909 FLORIDA BLVD,
LIVINGSTON, LA 70754

PHONE: (225) 686-7044

POPULATION SERVED: PRE-K THROUGH
GRADE 12

SERVICES OFFERED: PUBLIC
EDUCATIONAL SERVICES

WEBSITE: [HTTPS://WWW.LPSB.ORG/](https://www.lpsb.org/)



ST. HELENA
PARISH SCHOOL DISTRICT

LT. HELENA PARISH SCHOOL BOARD

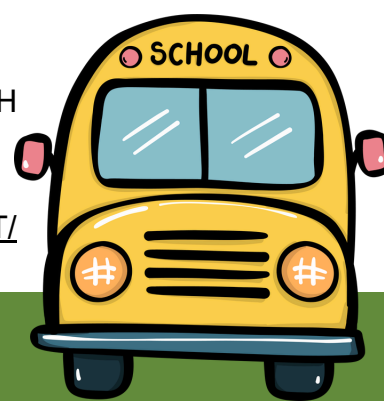
ADDRESS: 6116 HIGHWAY 10,
GREENSBURG, LA 70441

PHONE: (225) 222-3710

POPULATION SERVED: PRE-K THROUGH
GRADE 12 STUDENTS

SERVICES OFFERED: PUBLIC K-12

WEBSITE: [HTTPS://WWW.STHPK-12.NET/](https://www.sthpk-12.net/)





NORTH OAKS MEDICAL CENTER

ADDRESS: 15790 PAUL VEGA MD DRIVE, HAMMOND, LA 70403

PHONE: (985) 230-1359

POPULATION SERVED: GENERAL COMMUNITY

SERVICES OFFERED: EMERGENCY AND TRAUMA CARE, INPATIENT AND OUTPATIENT SERVICES, SURGERY, DIAGNOSTICS, REHABILITATION, SPECIALTY CLINICS

WEBSITE:

[HTTPS://WWW.NORTHOAKS.ORG/](https://www.northoaks.org/)



OUR LADY OF THE ANGELS HOSPITAL

ADDRESS: 433 PLAZA STREET, BOGALUSA, LA 70427

PHONE: (985) 730-2694

POPULATION SERVED: GENERAL COMMUNITY

SERVICES OFFERED: EMERGENCY SERVICES, INPATIENT AND OUTPATIENT CARE, IMAGING, SURGERY, WOMEN'S HEALTH, PEDIATRICS

WEBSITE:

[WWW.FMOLHS.ORG/LOCATIONS/NORTH SHORE/OUR-LADY-OF-THE-ANGELS-HOSPITAL/](http://www.fmolhs.org/locations/north-shore/our-lady-of-the-angels-hospital/)



RIVERSIDE MEDICAL CENTER

ADDRESS: 1900 SOUTH MAIN STREET, FRANKLINTON, LA 70438

PHONE: (985) 839-2945

POPULATION SERVED: GENERAL COMMUNITY

SERVICES OFFERED: EMERGENCY CARE, INPATIENT AND OUTPATIENT SERVICES, LAB, IMAGING, PRIMARY CARE, SPECIALTY CLINICS

WEBSITE: [WWW.RMCHOSPITAL.COM/](http://www.rmchospital.com/)



OUR LADY OF THE LAKE LIVINGSTON

ADDRESS: 5000 O'DONOVAN BLVD, WALKER, LA 70785

PHONE: (225) 691-0300

POPULATION SERVED: GENERAL COMMUNITY

SERVICES OFFERED: EMERGENCY CARE, IMAGING, LAB SERVICES, OUTPATIENT CLINICS

WEBSITE:

[WWW.FMOLHS.ORG/LOCATIONS/LIVINGS TON/OUR-LADY-OF-THE-LAKE-LIVINGSTON/](http://www.fmolhs.org/locations/livingston/our-lady-of-the-lake-livingston/)





VIA LINK

ADDRESS: 5001 HWY 190 E.
SERVICE RD. SUITE C-1,
COVINGTON, LA 70443

PHONE: (504) 708-2937

POPULATION SERVED: ALL

SERVICES OFFERED: 24/7 CRISIS
LINES, SUICIDE SUPPORT, VIRTUAL
STATEWIDE SUICIDE LOSS GROUP,
PREVENTION TRAINING

WEBSITE:

[HTTPS://WWW.VIALINK.ORG](https://www.vialink.org)



INDEPENDENCE POLICE

CONTACT PERSON: FRANK
EDWARDS, CHIEF

ADDRESS: 580 W 5TH ST,
INDEPENDENCE, LA 70443

EMAIL:

CHIEF@INDEPENDENCEPD.ORG

PHONE: (985) 878-9477

POPULATION SERVED: TOWN OF
INDEPENDENCE

SERVICES OFFERED: LAW
ENFORCEMENT



CRIME STOPPERS OF TANGIPAHOA

ADDRESS: PO BOX 2973, HAMMOND,
LA 70404

PHONE: (985) 662-5557

EMAIL:

TANGICRIMESTOPPERS@GMAIL.COM

POPULATION SERVED: TANGIPAHOA
RESIDENTS

SERVICES OFFERED: ANONYMOUS TIP
REPORTING

WEBSITE:

[HTTPS://TANGICRIMESTOPPERS.COM](https://tangicrimestoppers.com)





LION UP RECOVERY

ADDRESS: 303 TEXAS AVENUE,
HAMMOND, LA 70403

PHONE: (985) 549-5094

POPULATION SERVED: SOUTHEASTERN
LOUISIANA UNIVERSITY STUDENTS

SERVICES OFFERED: COLLEGIATE
RECOVERY SUPPORT SERVICES

WEBSITE:

[HTTPS://WWW.SOUTHEASTERN.EDU/ADMI
N/CS/LIONUP/RECOVERY/](https://www.southeastern.edu/admission/cs/lionup/recovery/)



FLORIDA PARISHES HUMAN SERVICES AUTHORITY

ADDRESS: 835 PRIDE DR., HAMMOND, LA
70401

PHONE: (985) 543-4730

POPULATION SERVED: CHILDREN AND
ADULTS

SERVICES OFFERED: MENTAL HEALTH &
SUBSTANCE USE DISORDER SERVICES

WEBSITE: [HTTPS://FPHSA.ORG/](https://fphsa.org/)



NAMI SOUTHEAST LOUISIANA

PROGRAM AREA: BEHAVIORAL HEALTH

DIRECTOR: ALLYSON ALEXANDER,
ADMINISTRATIVE COORDINATOR

ADDRESS: 23577 MARTIN WAY, TANGIPAHOA,
LA 70488

EMAIL: AALEXANDER@NAMISELA.ORG

PHONE: (985) 626-6402

POPULATION SERVED: MENTAL HEALTH
POPULATIONS

SERVICES OFFERED: SUPPORT GROUPS,
CLASSES, EDUCATION

WEBSITE: [HTTPS://NAMISELA.ORG/](https://namisela.org/)

NOTES: MENTAL HEALTH SUPPORT, YOUTH
VOLUNTEER OPPORTUNITIES



CHOICES

PROGRAM AREA: BEHAVIORAL
HEALTH

DIRECTOR: LINDA CUCCIA,
COMMUNITY LIAISON

ADDRESS: 107 S CHERRY ST.,
HAMMOND, LA 70403

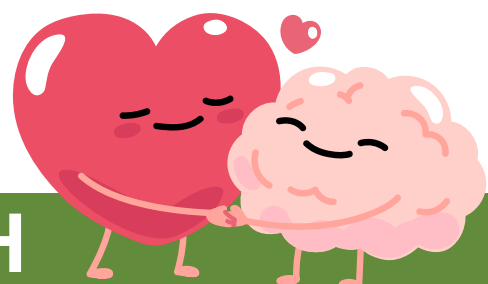
EMAIL: LCUCCIA@CHOICESCCS.ORG

PHONE: (985) 415-0500

POPULATION SERVED: YOUTH AGES
5-20

SERVICES OFFERED: WRAPAROUND
SERVICES

WEBSITE: [HTTPS://CHOICESCCS.ORG/](https://choicesccs.org/)



PINEWOOD THERAPEUTIC COUNSELING CLINIC

PROGRAM AREA: SUBSTANCE USE DISORDER TREATMENT

ADDRESS: 542 COLUMBIA STREET, SUITE B, BOGALUSA, LA 70427

PHONE: (985) 735-9448

WEBSITE:

[HTTPS://CARF.ORG/PROVIDER/THERAPEUTIC-COUNSELING-CLINIC-INC-DBA-PINEWOOD-239776/](https://carf.org/provider/therapeutic-counseling-clinic-inc-dba-pinewood-239776/)

SERVICES OFFERED: 12-WEEK OUTPATIENT PROGRAM FOR SUBSTANCE ABUSE TREATMENT.



WOODLAKE RECOVERY – BOGALUSA

PROGRAM AREA: SUBSTANCE USE DISORDER TREATMENT & RECOVERY

ADDRESS: 700 MEMPHIS STREET, BOGALUSA, LA 70427

PHONE: (985) 241-7537

EMAIL:

ADMISSIONS@WOODLAKECENTER.COM

WEBSITE:

[HTTPS://WWW.WOODLAKECENTER.COM](https://www.woodlakecenter.com)

SERVICES OFFERED: PROVIDES COMPREHENSIVE SUBSTANCE USE DISORDER TREATMENT AND RECOVERY PROGRAMS INCLUDING INPATIENT AND OUTPATIENT SERVICES, INDIVIDUAL AND GROUP COUNSELING, AND AFTERCARE PLANNING.



COVINGTON BEHAVIORAL HOSPITAL

ADDRESS: 201 GREENBRIAR BLVD, COVINGTON, LA 70433

EMAIL: LOUIS.LAVIE@COVINGTONBH.COM

PHONE: (985) 893-2970

POPULATION SERVED: CHILDREN, ADOLESCENTS, ADULTS

WEBSITE: [HTTPS://WWW.COVINGTONBH.COM/](https://www.covingtonbh.com/)



Franciscan Missionaries of Our Lady HEALTH SYSTEM

OUR LADY OF THE ANGELS FAMILY MEDICINE AND OBGYN – BOGALUSA

PROGRAM AREA: MEDICATION-ASSISTED TREATMENT (MAT)

ADDRESS: 420 AVENUE F, BOGALUSA, LA 70427

PHONE: (985) 730-6970

WEBSITE:

[HTTPS://WWW.FMOLHS.ORG/LOCATIONS/NORTHSHORE/OUR-LADY-OF-THE-ANGELS-FAMILY-MEDICINE-617-AVENUE-F](https://www.fmolhs.org/locations/northshore/our-lady-of-the-angels-family-medicine-617-avenue-f)

SERVICES OFFERED: SUBOXONE/SUBUTEX TREATMENT



FACILITY NAME: YOUTH SERVICE BUREAU

ADDRESS: 316 AUSTIN STREET, BOGALUSA, LA 70427 & 919 WASHINGTON STREET, FRANKLINTON, LA 70438

PHONE: (985) 735-1687 / (985) 839-4090

WEBSITE: YSBWORKS.COM

POPULATION SERVED: AT-RISK YOUTH AND THEIR FAMILIES

SERVICES OFFERED: ADVOCACY, COUNSELING, EDUCATION, AND INTERVENTION





ADAPT, INC. – BOGALUSA

PROGRAM AREA: SUBSTANCE ABUSE TREATMENT & PREVENTION

ADDRESS: 216 MEMPHIS STREET, BOGALUSA, LA

PHONE: (985) 735-0160

WEBSITE: WWW.ADAPTWP.ORG/



BEACON BEHAVIORAL OUTPATIENT – BOGALUSA

PROGRAM AREA: INTENSIVE OUTPATIENT PROGRAM (IOP) & BEHAVIORAL HEALTH

ADDRESS: 1640 S. COLUMBIA STREET, BOGALUSA, LA 70427

PHONE: (985) 735-1750

WEBSITE: [HTTPS://BEACONBH.COM](https://beaconbh.com)

SERVICES OFFERED: PROVIDES COMPREHENSIVE MENTAL HEALTH TREATMENT INCLUDING DEPRESSION, MOOD DISORDERS, PSYCHOSIS, AND CO-OCCURRING SUBSTANCE USE DISORDERS. OFFERS A STRUCTURED IOP WITH COGNITIVE-BEHAVIORAL THERAPY, PSYCHOEDUCATION, PSYCHODRAMA, SOLUTION-BASED THERAPY, AND TECHNIQUES RELATED TO DIALECTICAL BEHAVIORAL THERAPY.



SMOKING CESSATION COUNSELING – FREE

PROGRAM AREA: SMOKING CESSATION & TOBACCO USE SUPPORT

PHONE: (985) 730-7166

WEBSITE: [HTTPS://QUITWITHUSLA.ORG](https://quitwithusla.org)

SERVICES OFFERED: FREE MEDICATIONS, NICOTINE PATCHES, INDIVIDUAL COUNSELING, AND GROUP COUNSELING TO HELP QUIT SMOKING.

BRIGHTSIDE SOCIAL SERVICES – BOGALUSA

PROGRAM AREA: BEHAVIORAL HEALTH CARE (OUTPATIENT PSYCHIATRY AND THERAPY FOR CHILDREN, ADOLESCENTS, AND ADULTS)

ADDRESS: 311 LOUISIANA AVENUE, BOGALUSA, LA 70427

PHONE: (888) 417-5250

SERVICES OFFERED: OUTPATIENT PSYCHIATRY, OUTPATIENT THERAPY, AND PEER SUPPORT FOR BOTH YOUTH (6 +) AND ADULTS



**EAGLE TRANSPORTATION –
BOGALUSA**

PROGRAM AREA: NON-
MEDICAID TRANSPORTATION

PHONE: (985) 570-4257

SERVICES OFFERED: \$7 PER
PERSON IN BOGALUSA;
APPROXIMATELY \$35-\$50 FOR
OUT-OF-TOWN ROUND TRIPS.

**T&P TRANSPORTATION –
BOGALUSA AREA**

PROGRAM AREA: NON-
MEDICAID TRANSPORTATION

PHONE: (985) 516-2106 OR (985)
570-4213

SERVICES OFFERED: LOCAL
NON-MEDICAID
TRANSPORTATION SERVICES.



**BOGALUSA CITY COURT –
BOGALUSA**

PROGRAM AREA: LEGAL
SERVICES / COURT

ADDRESS: 202 ARKANSAS
AVENUE, BOGALUSA, LA 70427

PHONE: _(985) 732-6200

WEBSITE:

[HTTPS://WWW.BOGALUSA.ORG](https://www.bogalusa.org)

+TEL: TEL:+19857326200

**DISTRICT ATTORNEY'S
OFFICE – FRANKLINTON**
PROGRAM AREA: LEGAL
SERVICES

PHONE: _(985) 839-6711

**WASHINGTON PARISH CLERK
OF COURT – FRANKLINTON**

PROGRAM AREA: COURT
ADMINISTRATION

PHONE: _(985) 839-4663

WEBSITE:

[HTTPS://WWW.WASHINGTONPA
RISHCLERK.ORG](https://www.washingtonparishclerk.org)





CITY OF HAMMOND RECREATION

CONTACT PERSON: DESIREE DOTEY,
DIRECTOR

ADDRESS: 601 WEST COLEMAN
AVENUE, HAMMOND, LA 70403

PHONE: (985) 277-5903

EMAIL: DOTY_DM@HAMMOND.ORG

POPULATION SERVED: YOUTH &
ADULTS

SERVICES OFFERED: CAMPS,
AFTERSCHOOL, SPORTS

WEBSITE:

[HTTPS://HAMMOND.ORG/DEPARTMEN
TS/RECREATION/](https://hammond.org/departments/recreation/)



**GEAUX JOBS – LOCAL WORKFORCE
AREA 20**

ADDRESS: 305 N OAK ST, HAMMOND, LA
70401

EMAIL: SCHAPPELL@GEAUXJOBS.ORG

PHONE: (985) 340-0106

POPULATION SERVED: YOUTH AGES 16–
24

SERVICES OFFERED: CAREER
COUNSELING, JOB TRAINING
SCHOLARSHIPS, WORK EXPERIENCE,
DIGITAL LITERACY, ON-THE-JOB TRAINING

WEBSITE:

[HTTPS://WWW.GEAUXJOBS.ORG/](https://www.geauxjobs.org/)



WELL-AHEAD LA (STATEWIDE)

CONTACT PERSON: ALISHA JONES, HEALTH
IMPROVEMENT MANAGER

ADDRESS: 628 N. 4TH ST, BIN #15, BATON ROUGE,
LA 70802

EMAIL: ALISHA.JONES@LA.GOV

PHONE: N/A

POPULATION SERVED: PREVENTIVE HEALTH,
SCREENINGS

WEBSITE: [HTTPS://WELLAHEADLA.COM/](https://wellaheadla.com/)

NOTES: STATEWIDE PROGRAM; NOT DIRECT
YOUTH SERVICES



**LOUISIANA DOMESTIC VIOLENCE HOTLINE /
SOUTHEAST ADVOCATES FOR FAMILY
EMPOWERMENT (SAFE)**

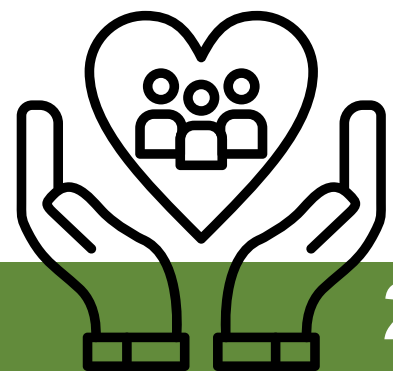
ADDRESS: P.O. BOX 1946, HAMMOND, LA 70404

PHONE: (888) 411-1333

WEBSITE: SAFELOUISIANA.ORG

POPULATION SERVED: SURVIVORS OF DOMESTIC
VIOLENCE

SERVICES OFFERED: 24/7 CRISIS SUPPORT,
EMERGENCY SHELTER, ADVOCACY, AND
EDUCATIONAL RESOURCES



BOGALUSA HELP CENTER

ADDRESS: 350 MARTIN LUTHER KING JR. DRIVE,
BOGALUSA, LA

PHONE: (985) 735-6404

WEBSITE:

[HTTPS://WWW.FACEBOOK.COM/BOGALUSAHELPC
ENTER/](https://www.facebook.com/BOGALUSAHELPCENTER/)

POPULATION SERVED: COMMUNITY MEMBERS
SEEKING ASSISTANCE

SERVICES OFFERED:

- OPEN WEDNESDAYS FROM 8 AM – 11:45 AM
- FOLLOW "BOGALUSA HELP CENTER" ON
FACEBOOK TO STAY INFORMED

**OFFICE OF FAMILY SUPPORT (FOOD
STAMPS/SNAP)**

ADDRESS: 1017 ONTARIO AVENUE,
BOGALUSA, LA

PHONE: (985) 732-6622

POPULATION SERVED: INDIVIDUALS AND
FAMILIES ELIGIBLE FOR SNAP BENEFITS

SERVICES OFFERED: ASSISTANCE WITH
FOOD STAMPS/SNAP ENROLLMENT AND
SUPPORT

**WASHINGTON PARISH FOOD BANK & THRIFT
SHOP**

ADDRESS: 2208 WASHINGTON STREET,
FRANKLINTON, LA 70438

PHONE: (985) 322-2017

WEBSITE:

[HTTPS://WWW.FINDHELP.ORG/PROVIDER/WASHING
TON-PARISH-FOOD-BANK--FRANKLINTON-
LA/5832130578087936?POSTAL=70427](https://www.findhelp.org/provider/washington-parish-food-bank--franklinton-la/5832130578087936?postal=70427)

POPULATION SERVED: INDIVIDUALS AND
FAMILIES EXPERIENCING FOOD INSECURITY

SERVICES OFFERED:

- FOOD DISTRIBUTIONS ON TUESDAY AND
THURSDAY FROM 9:00 AM - 2:00 PM;
EXCLUDING HOLIDAYS
- NEW SIGN-UP ON TUESDAY ONLY FROM 9:00
AM - 12:30 PM

BOGALUSA MISSION, ESM CHURCH

ADDRESS: 510 AVENUE B, BOGALUSA, LA

PHONE: (985) 732-2568

POPULATION SERVED: COMMUNITY
MEMBERS SEEKING ASSISTANCE

SERVICES OFFERED:

- OPEN EVERY THURSDAY FROM 8:30 AM –
12:30 PM
- CAN CALL FOR ASSISTANCE ON OTHER
DAYS IF NEEDED



Washington Parish Council on Aging & Public Transit

WASHINGTON PARISH COUNCIL ON AGING

ADDRESS: 603 WILLIS AVENUE, BOGALUSA, LA
70427

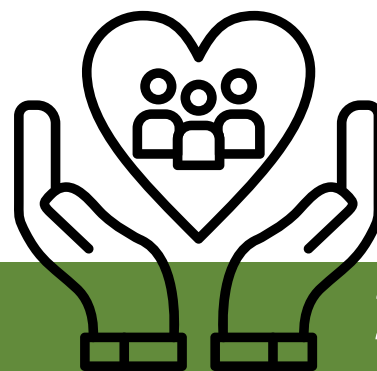
PHONE: (985) 732-6869

WEBSITE: [HTTPS://WWW.WASHINGTONCOA.ORG/](https://www.washingtoncoa.org/)

POPULATION SERVED: SENIORS AGED 60+

SERVICES OFFERED:

- MEALS ON WHEELS HOMEBOUND MEALS;
HOMEBOUND AND REGULAR CONGREGATE
MEAL CLIENTS RECEIVE 2 WEEKS OF 10
FROZEN MEALS EVERY OTHER WEEK
- EMERGENCY MEALS FOR QUALIFIED NON-
REGISTERED SENIORS AVAILABLE FOR
SENIORS 60+ YEARS
- LA TRANSIT RIDES AVAILABLE FOR MEDICAL
APPOINTMENTS, GROCERY, DRUG STORE, AND
BANKING





NURSE FAMILY PARTNERSHIP – SOUTHEAST AHEC

ADDRESS: 1206 J.W. DAVIS DRIVE, SUITE 101, HAMMOND, LA 70403

PHONE: (985) 520-5440

WEBSITE: [HTTPS://CHANGENT.ORG/](https://CHANGENT.ORG/)

POPULATION SERVED: FIRST-TIME MOTHERS ENROLLED BEFORE 29 WEEKS OF PREGNANCY, ELIGIBLE FOR MEDICAID, WIC, SNAP, TANF, OR SS

SERVICES OFFERED: FAMILY SUPPORT AND COACHING SERVICES



FLORIDA PARISHES HUMAN SERVICES AUTHORITY – BOGALUSA BEHAVIORAL HEALTH CLINIC

PROGRAM AREA: MENTAL HEALTH & SUBSTANCE USE DISORDERS

ADDRESS: 400 GEORGIA AVENUE, SUITE 1, BOGALUSA, LA 70427

PHONE: (985) 732-6610

EMAIL: ADMIN@FPHSA.ORG

WEBSITE: [HTTPS://FPHSA.ORG](https://FPHSA.ORG)

SERVICES OFFERED: OUTPATIENT MENTAL HEALTH AND ADDICTION TREATMENT SERVICES FOR ADULTS, ADOLESCENTS, AND CHILDREN. EVENING GROUPS AVAILABLE FOR ADDICTION TREATMENT.



WASHINGTON COMMUNITY HEALTH CENTER/ACCESS HEALTH

PROGRAM AREA: BEHAVIORAL HEALTH & PRIMARY CARE

ADDRESS: 2807 SOUTH COLUMBIA STREET, BOGALUSA, LA 70427

PHONE: (985) 730-7310

WEBSITE:

[HTTPS://ACCESSHEALTHLA.ORG/LOCATION/WASHINGTON-BOGALUSA/](https://ACCESSHEALTHLA.ORG/LOCATION/WASHINGTON-BOGALUSA/)

SERVICES OFFERED: THE PROGRAM FOCUSES ON MULTIPLE CHALLENGES SUCH AS DEPRESSION, ANXIETY, STRESS, SUBSTANCE ABUSE, CHRONIC PAIN, AND INSOMNIA. OFFERS TELEMEDICINE AND COUNSELING SERVICES.

WASHINGTON PARISH HEALTH UNIT

ADDRESS: 626 CAROLINA AVENUE, BOGALUSA, LA 70427 & 120 11TH AVENUE, FRANKLINTON, LA 70438

PHONE: (985) 732-6615

WEBSITE: LDH.LA.GOV

POPULATION SERVED: GENERAL POPULATION

SERVICES OFFERED: REPRODUCTIVE HEALTH, IMMUNIZATIONS, WIC



WELL-AHEAD LA

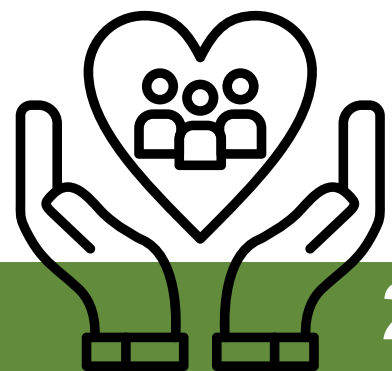
CONTACT PERSON: KIMBERLY BUTCHER, REGION 9 WELLSPOT REPRESENTATIVE

EMAIL: KIMBERLY.BUTCHER@LA.GOV

PHONE: (985) 246-0501

POPULATION SERVED: REGION 9 PARISHES

WEBSITE: WELLAHEADLA.COM



ACKNOWLEDGMENTS

THIS GUIDE WAS DEVELOPED THROUGH THE COLLABORATIVE EFFORTS OF THE YOUTH MOBILE CRISIS COALITION AND ITS COMMITTED PARTNERS ACROSS REGION 2 AND REGION 9. WE ARE GRATEFUL TO THE MANY INDIVIDUALS AND ORGANIZATIONS WHO CONTRIBUTED THEIR TIME, RESOURCES, AND EXPERTISE TO ENSURE THAT YOUTH AND FAMILIES IN CRISIS HAVE ACCESS TO MEANINGFUL, TIMELY SUPPORT.

SPECIAL THANKS TO ALL PROVIDERS, AGENCIES, AND SCHOOL SYSTEMS WHO SHARED INFORMATION AND REMAIN DEDICATED TO IMPROVING BEHAVIORAL HEALTH OUTCOMES IN OUR COMMUNITIES.

CONTACT INFORMATION

FOR QUESTIONS ABOUT THIS GUIDE OR TO CONNECT WITH SOUTHEAST COMMUNITY HEALTH SYSTEMS, PLEASE CONTACT:

NANNETTE BESTER

DIRECTOR OF ENROLLMENT AND OUTREACH

NBESTER@SHCHC.ORG

[\(225\) 306-2081](tel:(225)306-2081)

BEN LARISEY

DIRECTOR OF BEHAVIORAL HEALTH

BLARISEY@SHCHC.ORG

[\(225\) 306-2099](tel:(225)306-2099)

DANA MULLER

MARKETING AND GRANT DIRECTOR

DMULLER@SHCHC.ORG

[\(225\) 306-2096](tel:(225)306-2096)

SOUTHEAST COMMUNITY HEALTH SYSTEMS

WEBSITE: WWW.SHCHC.ORG

