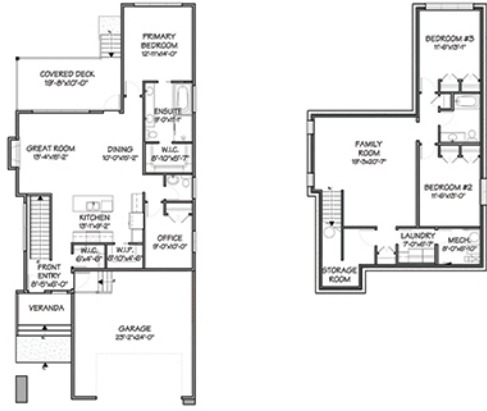




THE BRYCE
1300 SF
 BUNGALOW
 2 Bed
 1.5 Bath



MAIN LEVEL FLOOR PLAN
 1,300 sq. ft.

LOWER LEVEL
 995 sq. ft.



THE FRASER
1645 SF
 2 STOREY
 3 Bed
 2.5 Bath



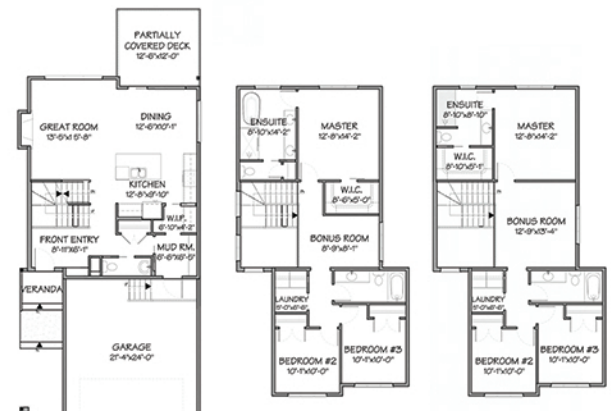
UPPER LEVEL 941 FT²

MAIN LEVEL 704 FT²

LOWER LEVEL 481 FT²
 OPTIONAL BASEMENT DEVELOPMENT



THE Finaly
1741 SF
 2 STOREY
 3 Bed
 2.5 Bath



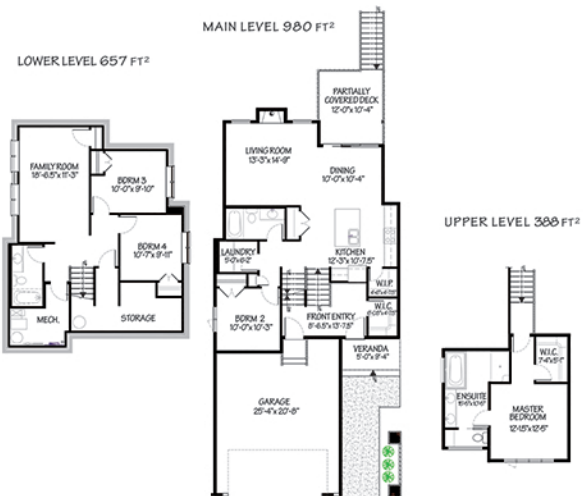
MAIN LEVEL FLOOR PLAN
 817 FT²

UPPER LEVEL FLOOR PLAN
 924 FT²

OPTIONAL UPPER FLOOR PLAN



THE BAYLEY
1368 SF
 BI-LEVEL
 3 Bed
 2.5 Bath



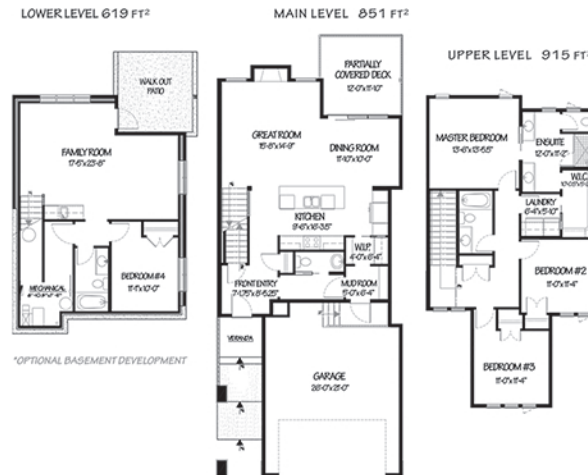
LOWER LEVEL 657 FT²

MAIN LEVEL 980 FT²

UPPER LEVEL 388 FT²



THE DALLAS
1766 SF
 2 STOREY
 3 Bed
 2.5 Bath



LOWER LEVEL 619 FT²

MAIN LEVEL 851 FT²

UPPER LEVEL 915 FT²

*OPTIONAL BASEMENT DEVELOPMENT



THE Carson
1645 SF
 2 STOREY
 3 Bed
 2.5 Bath



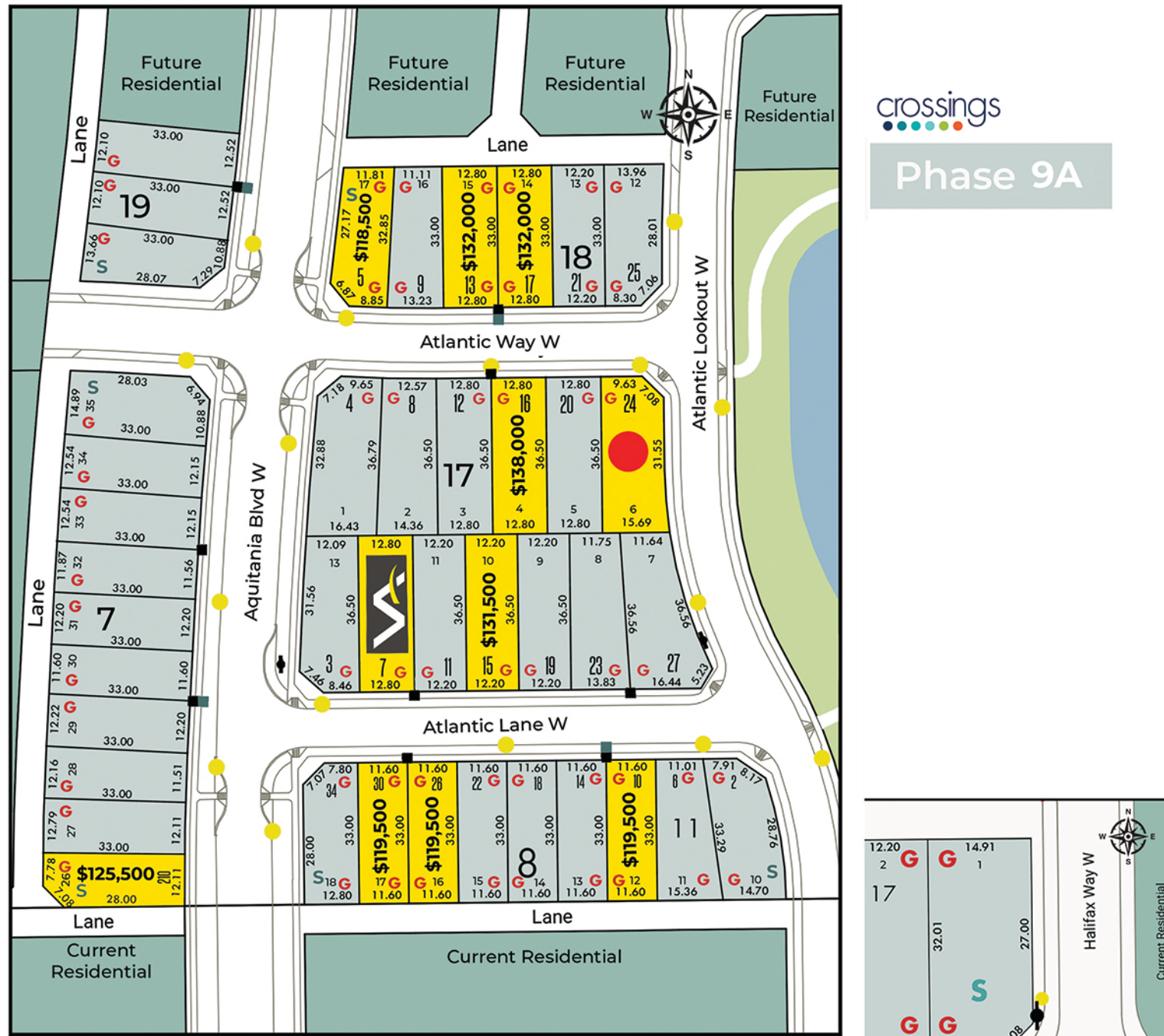
MAIN LEVEL FLOOR PLAN
 882 sq. ft.

UPPER LEVEL FLOOR PLAN
 1,069 sq. ft.

LOWER LEVEL
 665 sq. ft. Future dev



These plans are the property of Van Arbor Homes Corp. All rights reserved, including the right of reproduction in whole, or in part. E. & O.E. Floor plans and illustrated features are an artistic conception and may be optional. Van Arbor Homes reserve the right to alter or change plans and specifications without notice.



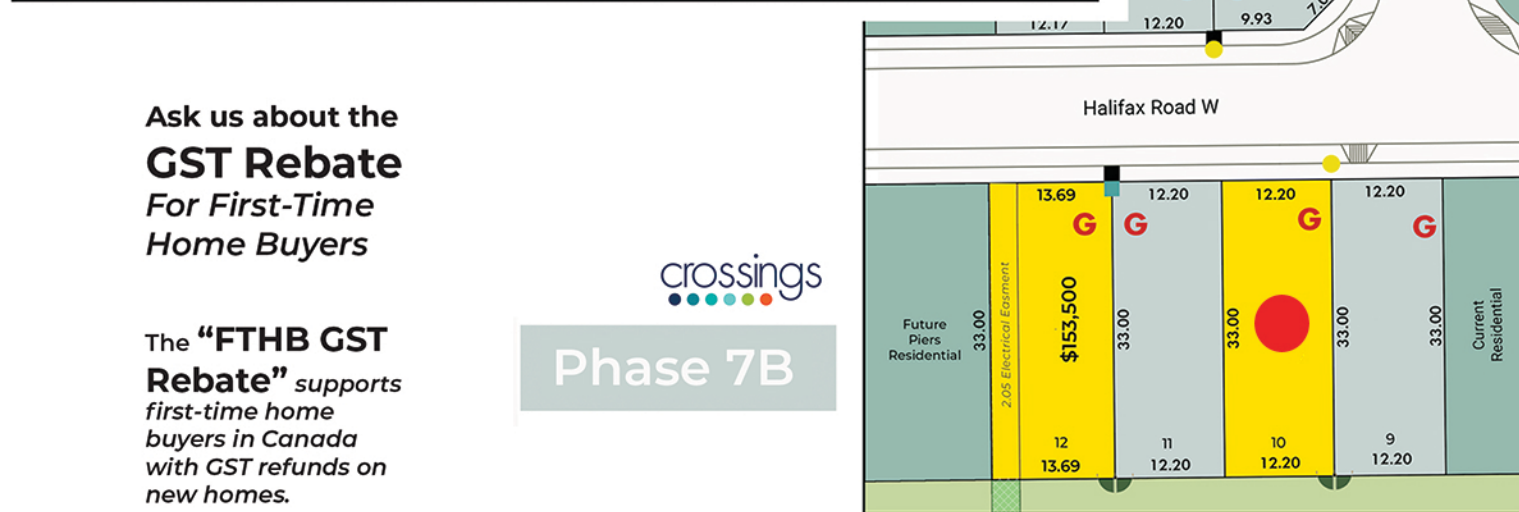
crossings

Phase 9A

crossings

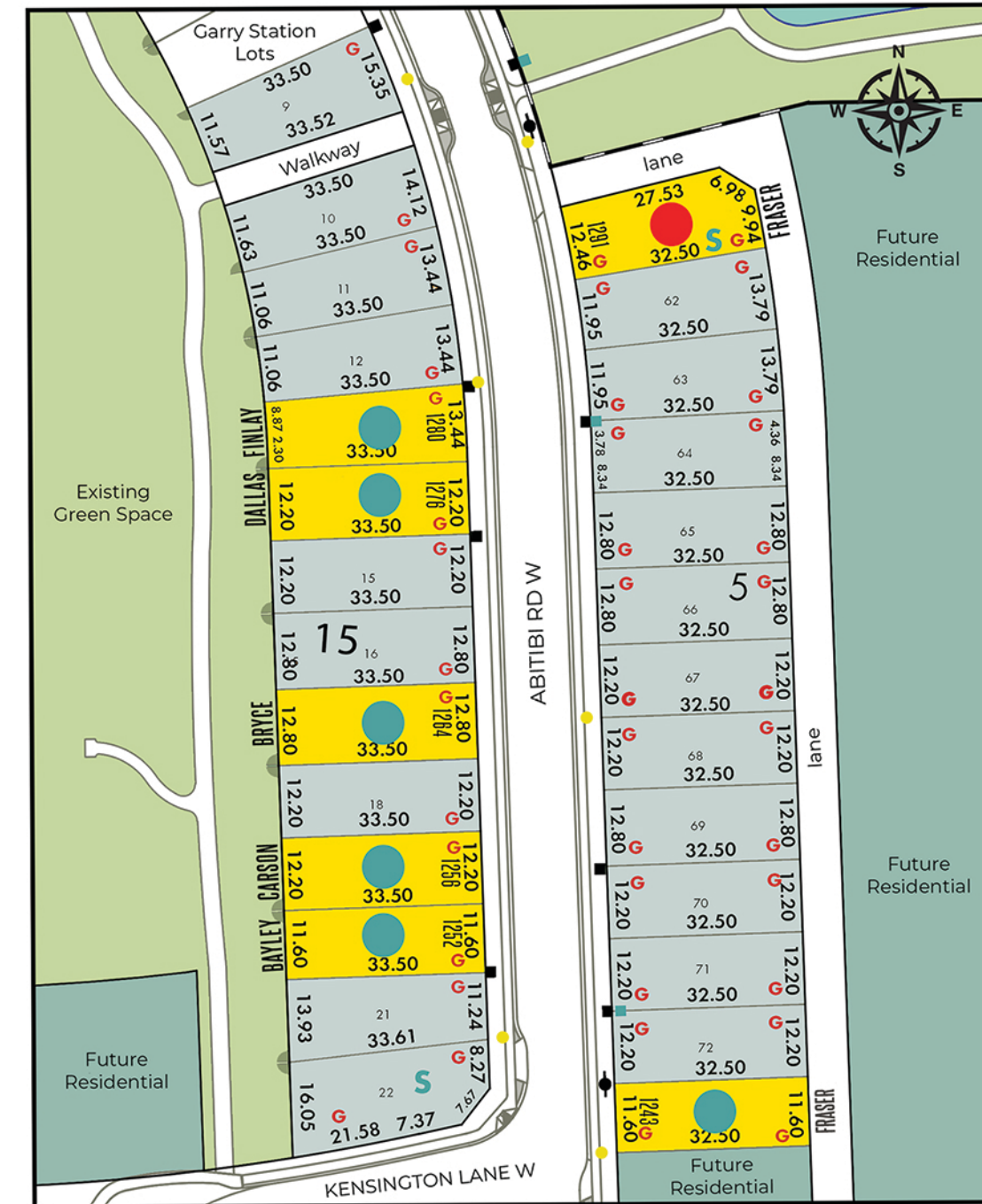
EVERYTHING YOU NEED AND MORE, RIGHT OUTSIDE YOUR DOOR.

The Crossings is a lively urban village where everything you need is right outside your door. From local shops and dining to parks, schools, and a modern recreation centre, this West Lethbridge community is designed for convenience and connection. Wide sidewalks and green spaces encourage walking, while the nearby sports fields and library make it easy to stay active and engaged. Whether you're picking up groceries, enjoying a swim, or meeting friends for coffee, The Crossings brings it all together in one welcoming neighbourhood.



crossings

Phase 7B



PHASE 15A

LEGEND

- SHOWHOME
- SOLD
- LIFESTYLE HOME
- VAN ARBOR LOT
- OTHER BUILDER
- SUITE PERMITTED
- STREET LIGHT
- HYDRANT
- TRANSFORMER
- UTILITY PEDESTAL
- GATE
- POND



Ask us about the **GST Rebate** For First-Time Home Buyers

The "FTHB GST Rebate" supports first-time home buyers in Canada with GST refunds on new homes.

These plans are the property of Van Arbor Homes Corp. All rights reserved, including the right of reproduction in whole, or in part. E. & O.E. Floor plans and illustrated features are an artistic conception and may be optional. Van Arbor Homes reserve the right to alter or change plans and specifications without notice.