

FARMERS

SINCE 1920

**Qualifications
&
Capabilities**

Agenda

- Introductions & Safety
- Farmers History & Summary Overview
- Capabilities & Expertise
- Quality
- EH&S
- Selected Projects
- Q&A
- Appendix: Photo Gallery

History & Summary Overview

- Since 1920
- Proud tradition of earning and sustaining “Partner of Choice” relationship with industrial clients
- Proven history of evolving with current and emerging markets, while maintaining and growing strategic partnerships with a powerful list of clients
- Certified Small Business: CAGE #00232
- La Marque, TX headquarters is in a Federally designated “Opportunity Zone”



FARMERS

Experience & Capabilities Summary

- Production Pipe Fabrication
- Pressure Vessel Fabrication
- Metal Ductwork
- Custom/Complex Fabrication
- Electrical Control Panels
- Positive Material Identification (PMI)
- Pickling & Passivation
- Fabrication & Field Install
- Field Welding Services



FARMERS

Shop Location & Capacity

- 7 acres of existing fabrication property
- 10 acres is available for a pre-assembly & modularization yard



Environmental Health & Safety

Environmental

- 7-acre campus has unique environmental considerations
- Sustainability
 - Waste management & recycling programs have processed 150 tons of recycled materials in the last 3 years
- Hazardous Materials Program
 - Onsite pickling & passivation program requires TCEQ & EPA registry & inspection

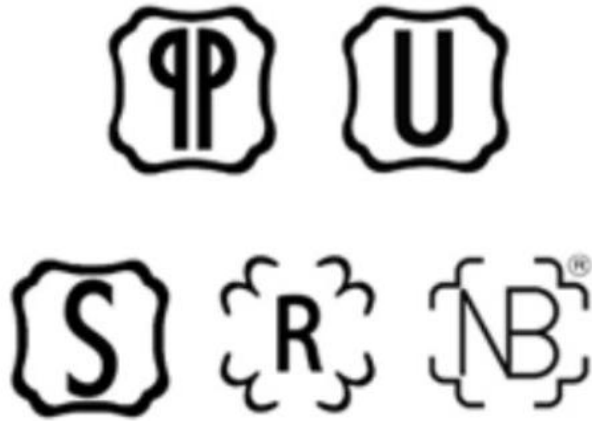
Health & Safety

- Program build on core principles
 - Individual ownership
 - Leadership accountability
- Risk-Based Observation Program
- Safety Statistics
 - Previous 12 months
 - RIR = 0.00
 - EMR = 0.60
- ISNetWorld #400-222064
- ARIBA ID #1465151

Quality Program

Certification Stamps

- ASME "R"
- ASME "U"
- ASME "S"
- ASME "PP"



Differentiation

- Average company tenure is 19 years
- Some staff are 3rd generation welders
- 70-year vendor history with Exxon
- Excellent quality metrics results
- Extensive training program
- Onsite non-destructive examination
- Onsite Positive Material Identification
- Onsite pickling & passivation

"Farmers Alloy Fabricating is committed to providing quality fabricated products. Their key strengths are fast responsive times & flexibility to meet our unique project requirements. They always communicate well with our teams and take pride in their work." - Steve Bolton, Mitsubishi Heavy Industries

Experience with a Wide Range of Materials

- Duplex: 2205
- Super Duplex: 2507
- Titanium
- Zirconium 702
- Monel 400
- Aluminum 3003, 5052, 6061
- Alloy 20 (Carpenter 20)
- Copper
- Copper Nickel
- Silicon Bronze C655, C651
- Inconel 600, 601, 625, 718, 800, 825
- Stellite Overlay: 1 & 6
- Carbon Molley 204 Grade A/B/C
- C276 Hastelloy, Hastelloy X, Hastelloy B2, Hastelloy C22
- Stainless Steels: 304, 316, 317, 347, 410, 410S & L&H Grade Materials
- Chromes P11, P22, P5, P9, P91 Type 1&2
- Carbon Steel: A106, A105, A333, A514, SA516-70, SA572-50, normalized, HIC

As of March 1, 2025, we have completed 669 individual weld procedures, driven by client requests

A large, horizontal, cylindrical industrial distillation column is shown in a warehouse setting. The column is made of metal and has several manways and nozzles. It is supported by a wooden dolly. The warehouse has a high ceiling with a corrugated metal roof and a concrete floor. A ladder is visible on the left side of the column.

Selected Project 1: Oil & Gas Client Distillation Column Project

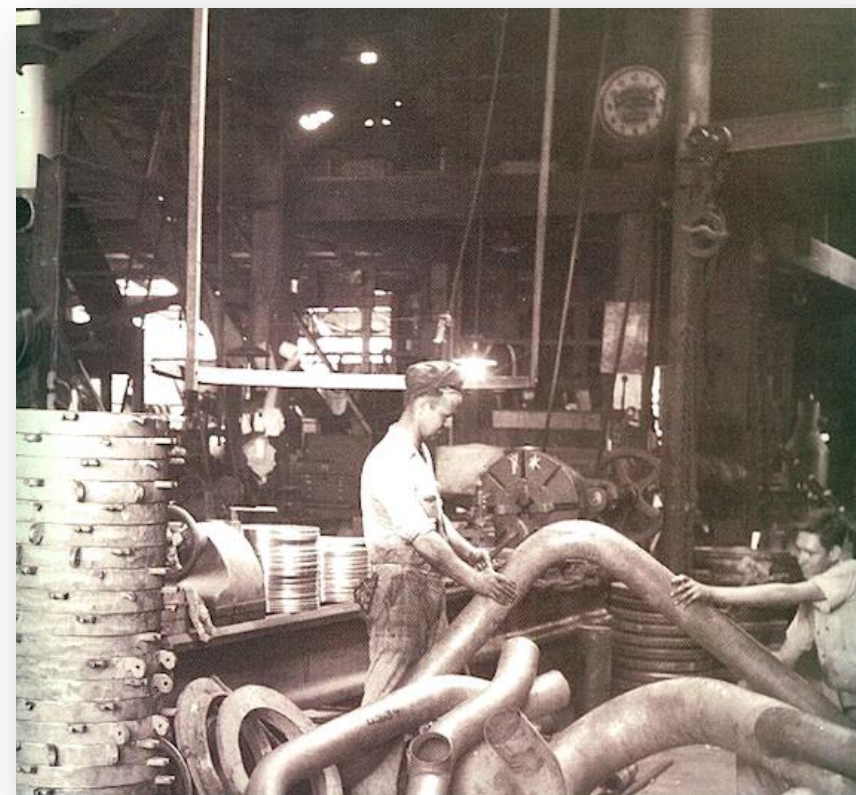
- 114" ID base section
- Transition to 78" ID smaller section
- 88' length
- 68,000 lbs
- 24" manways
- 2" – 12" process nozzle sizes
- Tray rings with down comers & process piping to hit the center of the tray

Selected Project 2: AI Data Center Fabricate & Install

- Shop fabrication of piping packages
- Transport and install into sub-assembly
- Sub-assembly is transported to AI Data Center site for modularization



Appendix Information



Selected Pipe Fabrication

Stainless

Nickel Alloys

Copper Alloys

Titanium

Zirconium

Chrome

Super-Duplex

Significant history with GE Gas Turbine Piping Packages



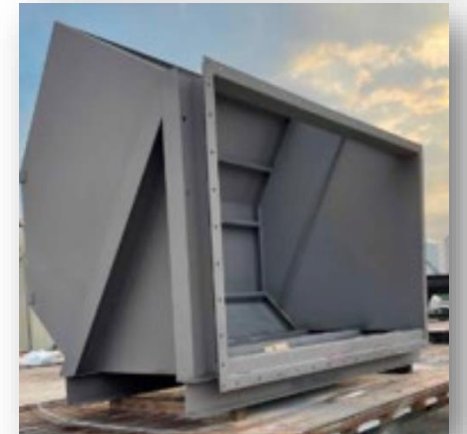
FARMERS

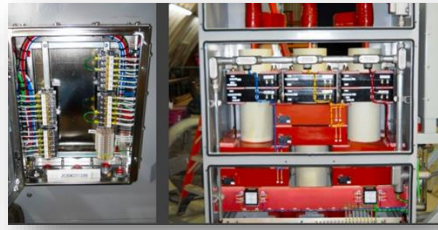
Pressure Vessel & Specialty



Ductwork & Similar Metal Configurations

- High-definition plasma cutting for plate, press brakes, shears, saws & other metal working machines
- Light & heavy gauge sheet metal fabrication for custom & complex geometric configurations
- Customized component fabrication:
 - Eccentric & concentric cones
 - Process columns
 - Towers
 - Stacks
 - Bubble Caps
 - Risers
 - Trays
 - Rolling cylinders
 - Press brake work
 - Tanks
 - Chutes
 - Flashing
 - Stairways
 - Light & heavy construction





Electrical Capabilities

- Buss bar fabrication
- Junction box pre-terminated
- Motor starter rack, with starters & disconnects
- Complete pump skid assembly
- Plastic fabrication in sheet, channel, or angle
- Repairs & Refurbished components

Pre-Assembled Skids – Ready to Install



Internal Capabilities

Positive Material Identification



Pickling & Passivation



Farmers Alloy Fabricating

FARMERS

SINCE 1920

Primary Contact:

Doug Polzin

DougP@farmersalloy.com

210 Banana Street

La Marque, Texas 77568

FarmersIndustrial.com