

# NYC Reads, Solves, and Grows with Kiddom



**KIDDOM**  
Digital forward. Human first.



**Teaching Lab**



# Educator Experiences

Kiddom significantly enhanced the user's teaching experience by offering a comprehensive suite of tools. Pre and post-testing facilitated accurate assessment of student progress, while pre-made presentations streamlined lesson planning and delivery across various instructional models. The interactive data dashboard provided valuable insights into student learning gaps and strengths, empowering data-driven decision-making and personalized instruction. **Kiddom also supported diverse assessment methods, catering to various learning styles.** Finally, the AI Clipper tool optimized lessons for efficient time management within the constraints of the school day, ensuring all essential learning objectives were covered.



**Mr. Henry**  
Academic Dean and STEM  
Department Lead at Exploration  
and Discovery MS/224

Kiddom streamlined the educator's workflow by centralizing all EL curriculum materials in a single, easily accessible platform. The platform also enabled efficient progress monitoring of student performance across all modules, providing valuable insights into individual student progress and overall class performance. Kiddom facilitated differentiated instruction by supporting the diverse learning needs of ELL students and exceptional learners. Furthermore, the platform empowered data-driven decision-making by enabling the educator to analyze student data, monitor curriculum implementation, and identify areas for improvement. Ultimately, **Kiddom enhanced teacher support by streamlining workflows and providing valuable data insights, enabling teachers to focus on delivering high-quality instruction** and fostering a learning environment that promotes student achievement.



**Ms. Francis**  
Master Teacher & Academic  
Dean at Exploration & Discovery  
(07X224)

# Kiddom's Beginnings

Years ago, as a transfer high school math teacher and department chair, I decided we would author the curriculum for our students rather than adopt a traditional curriculum from a publisher. We didn't think the materials available at the time were rigorous. And they certainly weren't engaging. I nearly burned myself out. I knew I wasn't alone in this endeavor.



In 2015, I co-founded Kiddom as a classroom management tool connected to a library of free, standards-aligned resources. Teachers came to Kiddom to supplement what their districts already had, which was just patching the problem, not solving it: the need for a rigorous, standards-aligned core program that includes digital tools to increase access, equity, and engagement in the classroom.

The problem I experienced as a teacher wasn't unique to me, and upon realizing this, we dedicated ourselves to blending education technology with the high(est)-



quality instructional materials, driven by the belief it truly takes a village to support every child's growth. And for that village to thrive, each educator needs effective materials, powerful tools, and insights that honor their commitment to their students.

Today, we make this vision a reality.

**Our technology enhances the accessibility and engagement of our evidence-based curricula for teachers and students with a singular goal: to save teachers time, energy, and resources.** We measure our success

through the inspiring stories of the educators we support. Kiddom has become their trusted ally in crafting exceptional lessons, facilitating enlightening learning experiences, and understanding each child's needs. As a result, we exponentially expand each teacher's reach.

Digital forward. Human first.

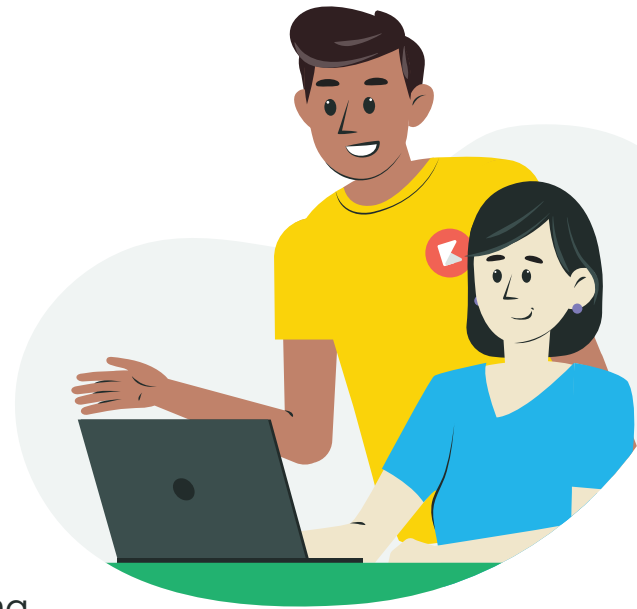


**Abbas Manjee**  
Co-Founder and  
Chief Academic Officer

# Digital Forward. Human First.

**Kiddom's a technology company in love with curriculum.** We seek out only the best high-quality instructional materials (that means results-proven, research-backed, third-party reviewed, and teacher-vetted). Partnering with these curriculum experts, we impart our tech-know-how. Together we create a unique digital learning environment that goes way beyond “just a platform” for HQIM.

Kiddom enhances each partner curriculum with thoughtful tools and features that accelerate teacher planning, lesson delivery, and reporting without adding hassle or complexity. Kiddom gives you time back while unleashing the full potential of HQIM so that you can do what you do best: connect with your students.



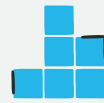
## Explore a few of our teachers' favorite Kiddom tech features



Teacher-facing  
AI Assistants



Editable Lesson  
Presentations with  
Speaker Notes



Integrated Digital  
Manipulatives  
and Centers



Personalize  
Lesson Content  
for Differentiation



15 Unique  
Assessment  
Types



Robust Student  
Feedback and  
Auto-grading



Layered,  
Standards-based  
Reports



Live Chat  
Support and  
Knowledge Base

# Kiddom Proudly Partners with



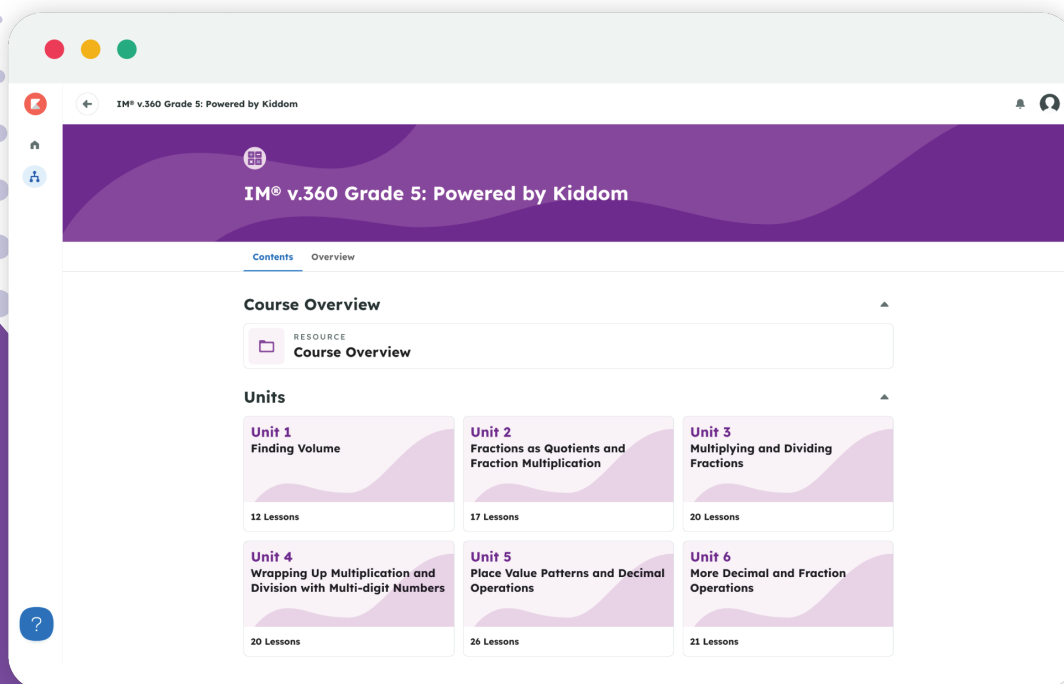


# Partnering with Illustrative Mathematics®



Earning All-Green on EdReports, Illustrative Mathematics' curricula empowers students to learn mathematics through active problem-solving using their existing math knowledge, life experiences, and the world around them. Simultaneously, IM helps educators elicit student thinking and foster conceptual understanding.

Kiddom offers digitally enhanced IM® v.360 as well as in-print teacher editions and student print alongside hands-on manipulative kits.

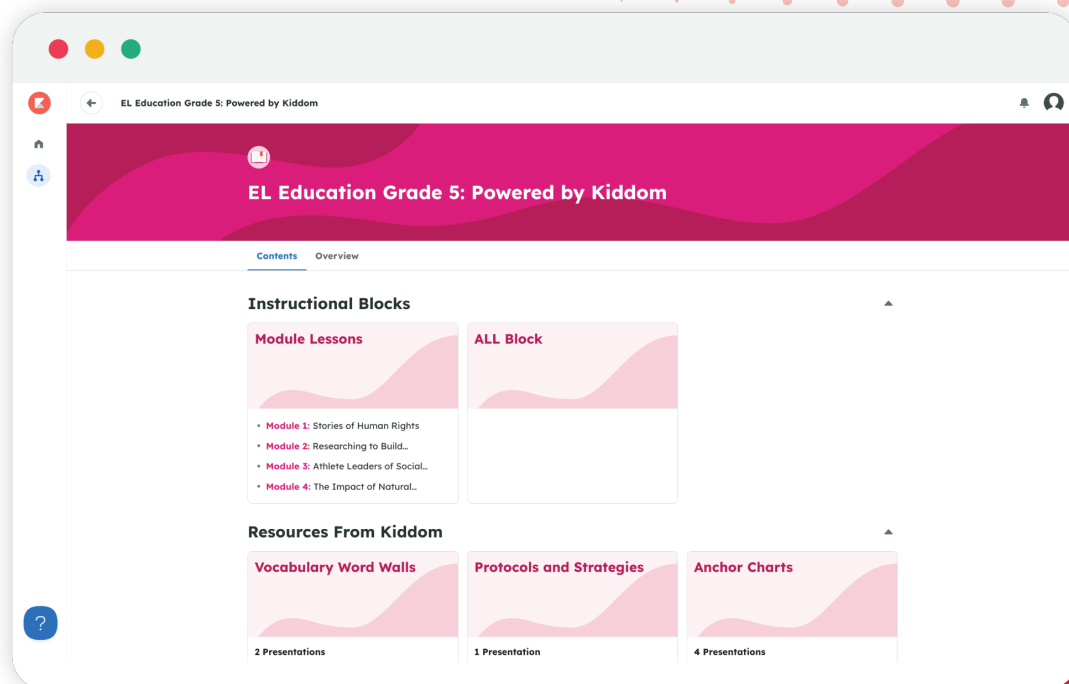


# Partnering with EL Education



EL Education K-8 allows students to engage in texts and tasks that are challenging, adventurous, and meaningful. When powered by Kiddom, teachers are able to close the gap between digital curriculum, instruction and assessments – creating an all-in-one hub for teaching and learning.

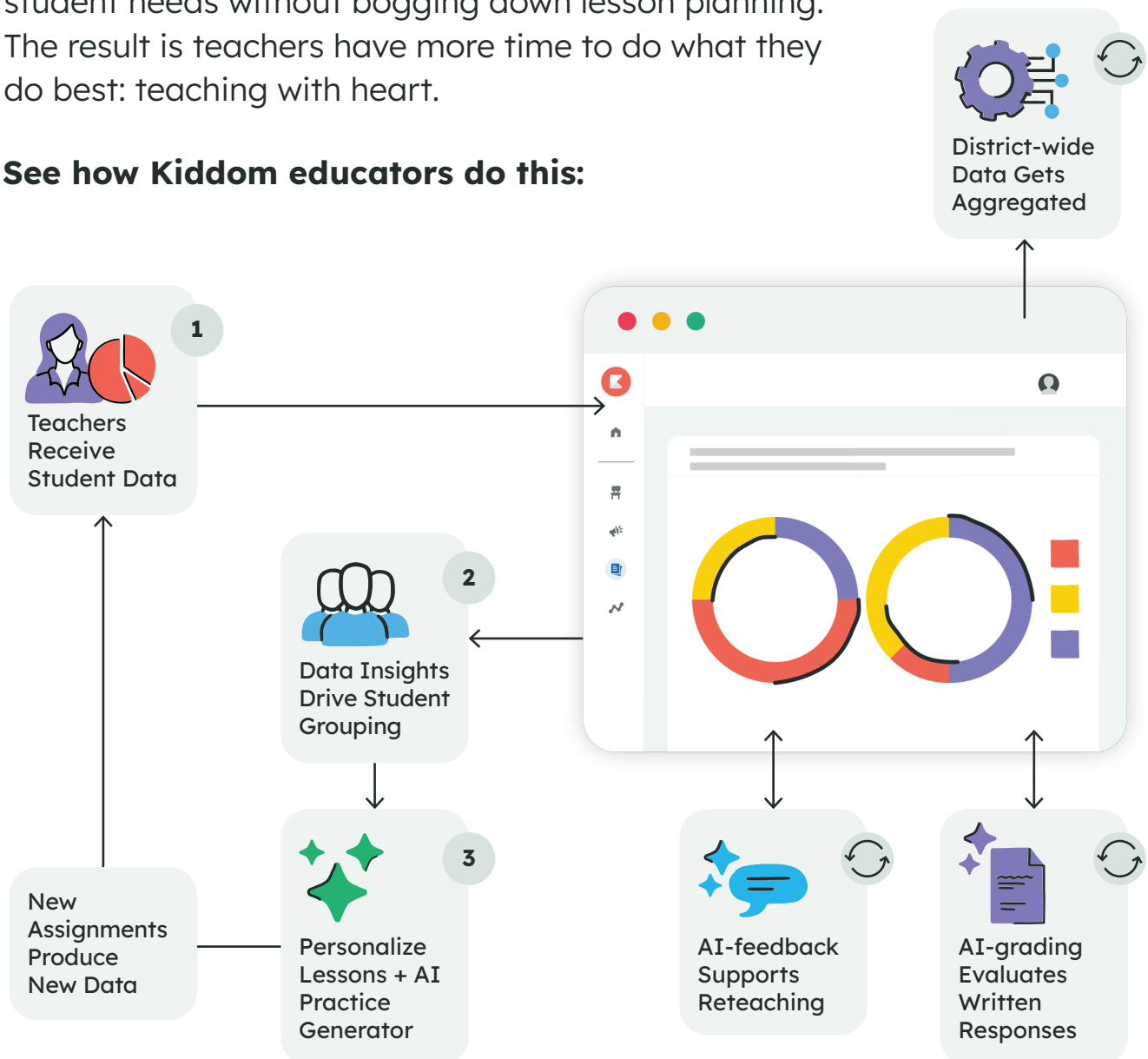
Kiddom offers digitally enhanced EL Education curricula and print including Skills Block 2017, Skills Block 2024, ELA Core K-5 2017, ELA Core 6-8 2019, and Unlock Phonics 2024.



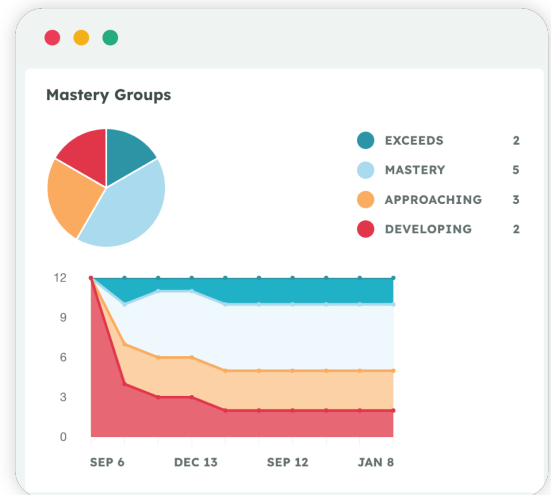
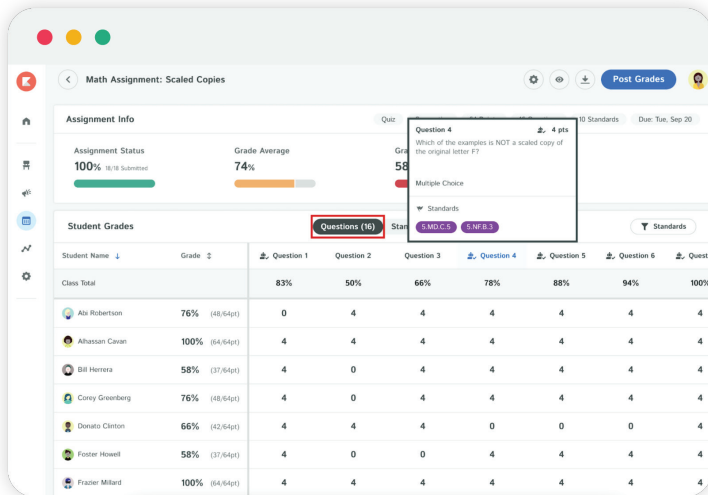
# 360° Data and Reporting

Kiddom's reporting suite helps educators and district leaders make sense of complex student data without the fuss of over-complicated dashboards or noisy, unactionable insights. Our no-nonsense approach allows instructional delivery to be quickly adjusted catering to student needs without bogging down lesson planning. The result is teachers have more time to do what they do best: teaching with heart.

See how Kiddom educators do this:



# Reports for Everyone



**1. Standards-based reports** help instructional coaches identify school and district wide challenges in instructional delivery. Through these reports, patterns such as challenging standards become visible so that cross-grade-level planning can occur and scope and sequences can be adjusted.

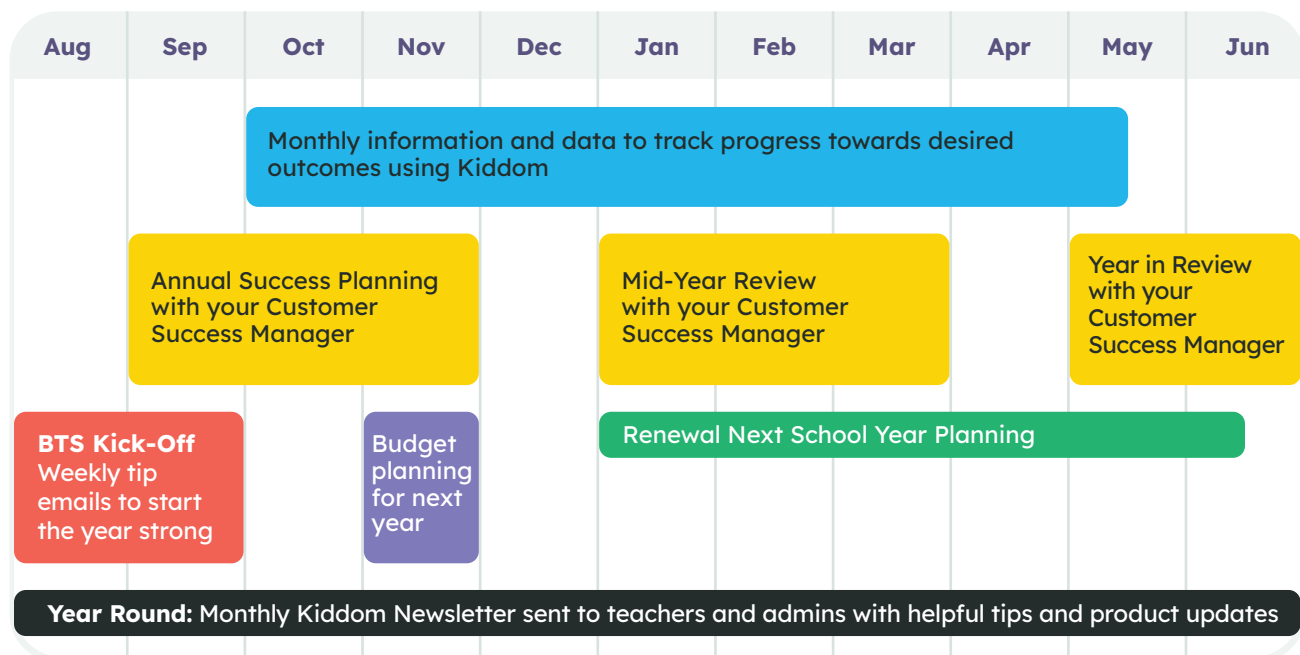
**2. Mastery reports** are ideal for teacher-student conferencing to visually understand how students have grown over time and identify how to group students based on areas of growth.

District leaders have access to additional report types such as usage reports to monitor the daily use of Kiddom.

# 1st Year Implementation

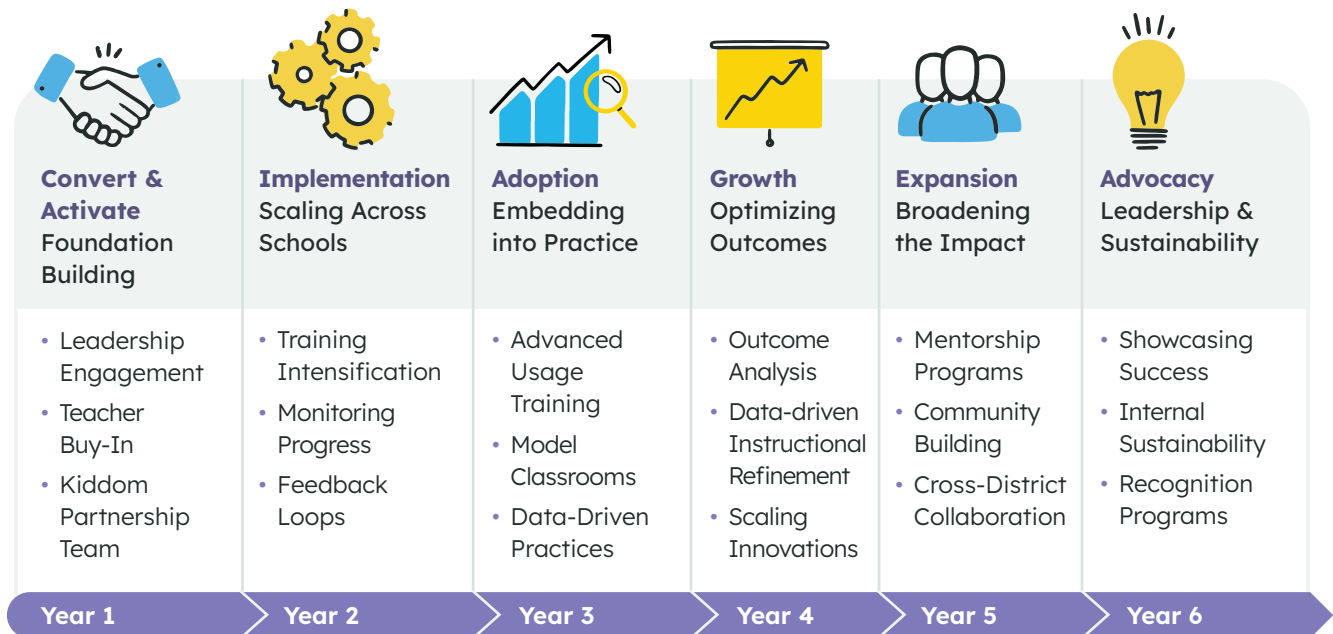
Implementing new curricula is hard. Moreover, teaching with new curricula adds a novel layer of challenges. That's why Kiddom supports you throughout your implementation with a dedicated Customer Success Manager—your success is our success!

Throughout your first year, **we'll be in your corner to navigate on-the-ground issues** you're facing as your students and teachers get started with EL Education and Illustrative Mathematics®.



# Multi-year Implementation

In subsequent years, implementation support will shift into a focus on best practices, nuanced use cases, and creating sustainable program leadership. As we progress, we'll broaden the scope of our focus from day-to-day use of Kiddom and HQIM to enabling systemic change through the way we teach and connect with students.



“

“Teachers are our most important resource to serve and elevate all young people. And buying a great curriculum program and professional learning service is just the first step towards that goal. Teachers must be equipped with powerful, purposeful technology designed to support the foundation HQIM and PL offer. Districts can’t do this work alone; districts need a partner in this work, not a vendor. That’s why we’re digital forward, human first at Kiddom.”

**Abbas Manjee**

Co-Founder and Chief Academic Officer

Thank you for joining us!  
Learn more by visiting **kiddom.co**.

