

ZOOMLION SPIDER LIFT ZX37T

Comply with CE Standard



FEATURES

Standard Features

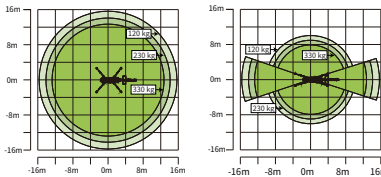
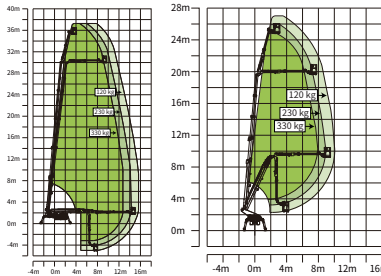
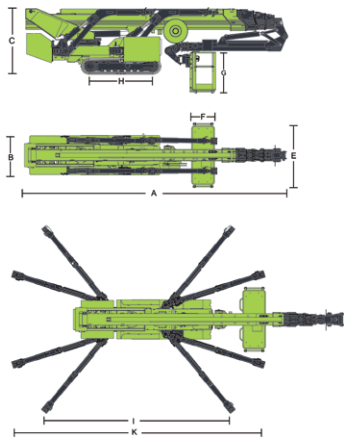
Proportional control
All motion alarm
Flashing beacon
Self-closing entry gate
Emergency descent system
Emergency stop button
Auto-leveling system
On-board diagnostic system
Auto-leveling outrigger
Non-marking rubber track
Load sensing system
Color display
Horn
Hour meter
Use while charging
AC power to platform

HIGHLIGHTS

- ▶ 1.2m ultra-narrow width, quick-change work platform, easy access to compact spaces
- ▶ 120kg/230kg/330kg various loads for various working conditions
- ▶ Engine + Plug-in work mode for multiple applications
- ▶ Symmetric layout boom, great structural rigidity, and small boom deflection
- ▶ Telescopic jib for flexible boom end
- ▶ Non-marking rubber track suitable for all terrains

ZOOMLION

Model	ZX37T	
	Imperial	Metric
Size		
Work Height	122ft 5in	37.3m
Platform Height	115ft 10in	35.3m
Horizontal Outreach	51ft 6in	15.7m
Below Ground Reach	18ft 8in	5.7m
A - Stowed Length (w/ platform)	25ft 11in	7.9m
D - Stowed Length (w/o platform)	25ft 11in	7.9m
B - Stowed Width	3ft 11in	1.2m
C - Stowed Height	6ft 6in	1.99m
E - Platform Length	5ft11in	1.8m
F - Platform Width	2ft4in	0.7m
G - Platform Height	3ft7in	1.1m
H - Crawler Size (Length×Width)	7ft12in×12in	2.43m×0.3m
I - Max Length w/ Outrigger Extending (Standard)	18ft3in	5.55m
L - Max Width w/ Outrigger Extending (Standard)	17ft9in	5.4m
K - Max Length w/ Outrigger Extending (Narrow)	24ft1in	7.35m
J - Max Width w/ Outrigger Extending (Narrow)	8ft10in	2.68m
Outrigger Pad Size (Diameter)	9ft×8ft	0.24m*0.2m
Approach Angle	19°	
Departure Angle	24°	
Performance		
Platform Capacity	507lb /728lb(restricted) /265lb (unrestricted)	230kg/330kg (restricted) /120kg (unrestricted)
Drive Speed	1.25mph	2km/h
Gradeability	19.8°/36%	
Allowable Tilting Angle When Driving	8.5/15%	
Turntable Swing	360°continuous	
Platform Rotation	±90°	
H-Tail Swing	0m	
Max Leveling Angle	13°	
Max Wind Speed	28 mph	12.5m/s
Power		
Engine	Yanmar	
Auxiliary Power	Electric pump	
Hydraulic Tank Capacity	29.1 us gal	110L
Track		
Type	Non-marking rubber track	
Weight		
Gross weight	18519 lb	8400kg
Ground Pressure When Driving	36.9N/m ²	
Ground Pressure When Working (Standard)	2.80N/m ²	
Ground Pressure When Working (Narrow)	4.26N/m ²	
Pressure on Single Outrigger When Working	47KN	



Range of Motion ZX37T

ACCESS WITH ZOOMLION GREEN

Phone: 0086(731)-88353680 0086(731)-88250971
E-mail: awp@zoomlion.com

Add: 701 Xulong Nan Lu, Xiangjiang New District, Changsha Hunan, China
Web: www.zoomlion-access.com

ZOOMLION ACCESS reserves the right to make specification and/or equipment changes without prior notification.
Product specifications are updated to May, 2025.