



vicarius

CASE STUDIES

Hawaii State FCU remediates 30% faster with vRx



General info

25%

improvement in MTTR

30%

reduction on manual
tasks



Hawaii State Federal Credit Union is a federally chartered credit union headquartered in Honolulu, Hawaii. It is the largest credit union in Hawaii.

INDUSTRY

Finance

COMPANY SIZE

201-500

KEY FEATURE

 Agent-based Scanning

 Auto Actions

 Patch Management

SUB-INDUSTRY

 Finance and Insurance

Introduction

Hawaii State FCU, a financial institution with approximately 800 endpoints, needed a streamlined solution to unify their vulnerability management process. After using a network-based vulnerability detection system for several years, they began searching for an agent-based alternative that could combine both vulnerability discovery and patching to reduce coordination demands across teams and enhance efficiency.

Challenges

Before adopting Vicarius vRx, Hawaii FCU faced significant limitations with their existing toolset. Their primary solution, Qualys, provided network-based vulnerability scanning but required an additional license for patching capabilities. This setup meant using separate tools for detection and remediation, which doubled costs and increased complexity. The reliance on network-based scanning also left gaps in endpoint coverage, especially for off-network or remote devices.

Hawaii FCU also considered Rapid7, evaluating it as a potential replacement. However, while Rapid7 offered reliable vulnerability scanning, it required extensive manual intervention for patch management, falling short of the unified, automated solution they sought.

Solution

Hawaii FCU implemented Vicarius vRx as an all-in-one vulnerability management and patching solution, helping to eliminate the need for separate tools. The vRx agents continuously scan endpoints and identify vulnerabilities, streamlining the process for the team.

- **Automated patching:** Hawaii FCU has automated over ten patching tasks, reducing their manual efforts by 30%. Using vRx's patch scheduling, the team can set patches to deploy at specific times without requiring manual oversight.
- **Improved vulnerability response:** By using the vRx dashboard, Hawaii FCU can prioritize and address high-risk endpoints immediately. This immediate response has shortened their remediation time by 25-30%, especially for urgent, case-by-case patching.
- **Consistent data collection:** Agent-based scanning provides comprehensive data on endpoint vulnerabilities, allowing the team to monitor devices even when they're off-network.

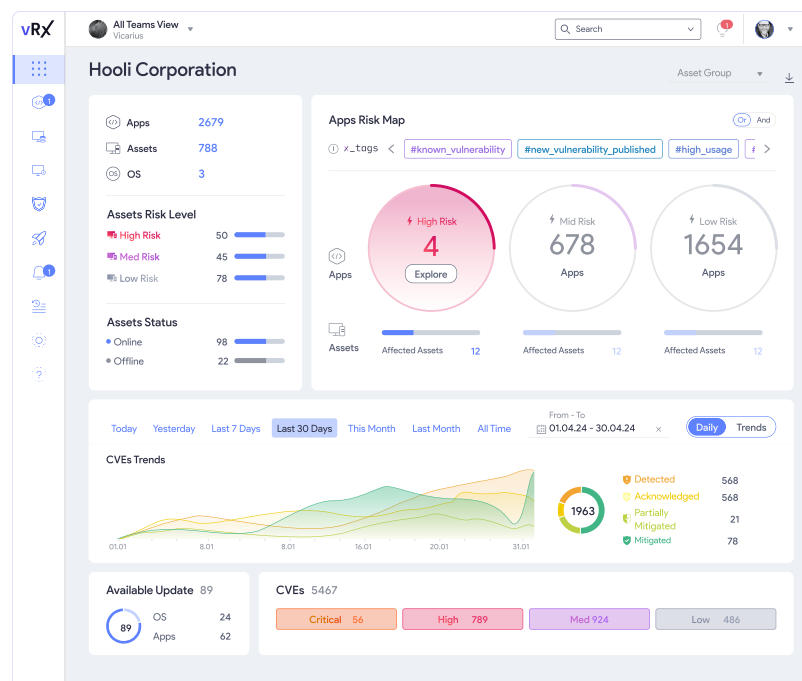
”

With vRx, we've reduced our remediation time by 25-30% and streamlined vulnerability management across our organization.

Impact so far

Since adopting vRx, Hawaii FCU has experienced a marked improvement in their vulnerability management efficiency. The automation capabilities in vRx have streamlined patch preparation and scheduling, saving the team significant manual work. Within the first three months of deployment, they gained reliable insights from vRx's data, which enabled them to optimize reporting and improve visibility across all endpoints.

Additionally, Hawaii FCU can now respond swiftly to any device with elevated vulnerability levels. The ability to target delinquent workstations, such as those missing scheduled patches due to network disconnects, has greatly enhanced their responsiveness and risk management.



vRx dashboard gives you a quick view into your asset inventory, risk map, and mitigation trends

Conclusion

Hawaii FCU has been highly satisfied with vRx's performance, citing the platform's stability and ease of use. They have noted the efficiency of Vicarius's customer support, describing it as responsive and knowledgeable. Despite awaiting the development of network scanning capabilities for devices like switches and routers, they view vRx as a comprehensive and valuable addition to their security toolkit. [Read their full review here.](#)