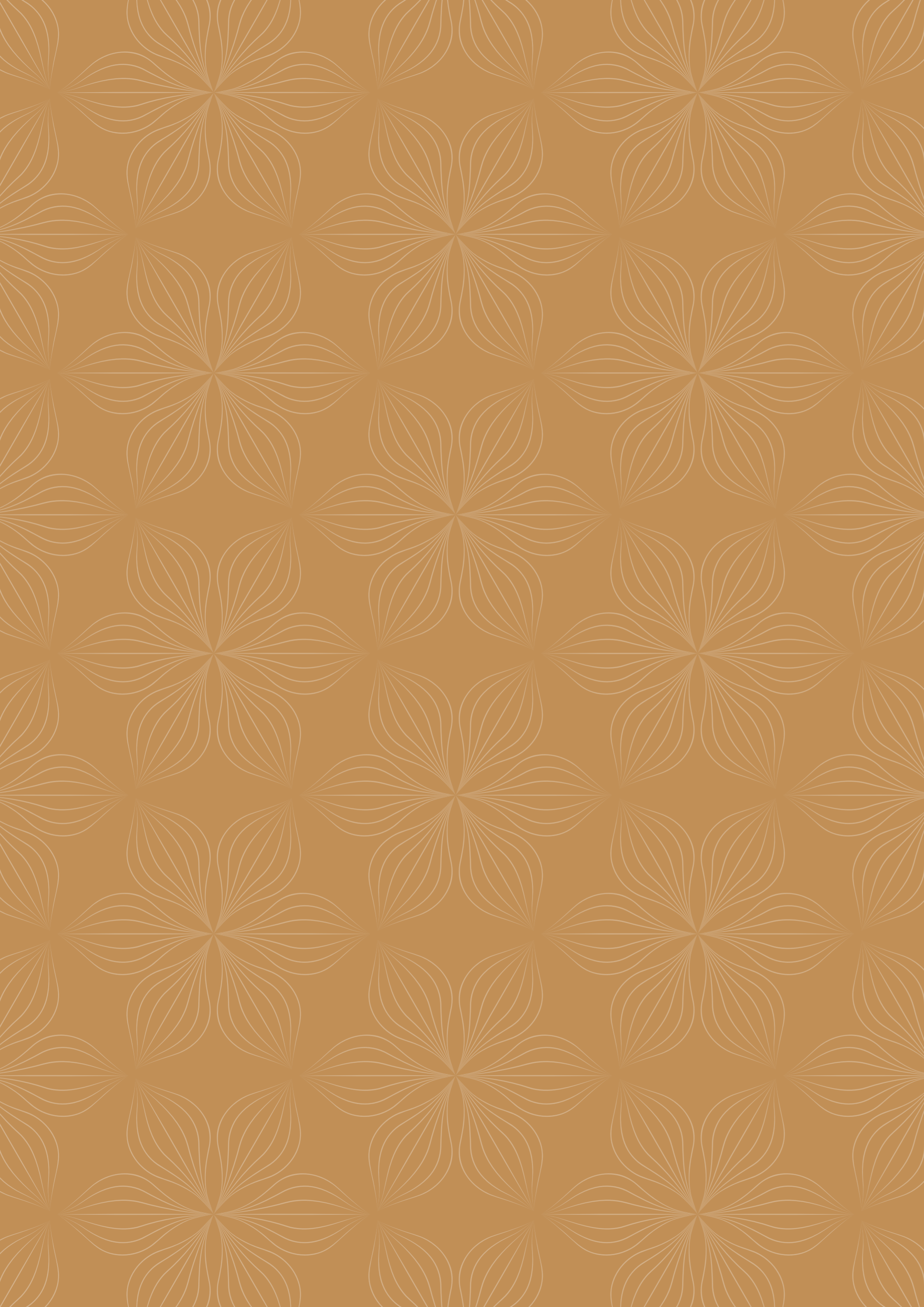




MIRU  
RESIDENCES  
HAKUBA





MIRU  
RESIDENCES  
HAKUBA



# MIRU Residences Hakuba

A prime apartment development located adjacent to the Happo-one ski lift.

Ski-in and ski-out of MIRU Residences Hakuba to enjoy the ultimate snow experience in the picturesque mountains of Hakuba, Japan.



# Prime Ski-in Ski-out Location

Hakuba is a large and popular ski resort in the highlands of Nagano, just 3 hours by train and bus from Tokyo.

## ACCESS MAP



MIRU Residences Hakuba is located next to the Happo-one lift station, near the famous Hakuba Olympic ski jump, and nearby to the shops and restaurants of Hakuba Village.

## AREA MAP



# White Season

Hakuba is one of the most popular winter and ski resort areas in Japan offering powder snow on a range of ski slopes with many other attractions.



TAKE A SNOW MONKEY DAY TRIP



EAT OUT AT HAKUBA RESTAURANTS



INDULGE IN HAKUBA ONSENS



SKI NAGANO OLYMPICS PISTES



EXPERIENCE A FIRE FESTIVAL



# Green Season

In summer, Hakuba is a cool highland retreat from the hot Japanese summer with activities for both Japanese and international tourists.

With its postcard alpine landscape, Hakuba in the summer has a host of attractions and activities for all.



HIKINGS AND WALKS



RAFTING, KAYAKING AND CANOEING



WATER SPORTS AT OMACHI'S LAKES



PARAGLIDING



HOT AIR BALLOON TOUR



ROAD CYCLING AND MOUNTAIN BIKING



TSUGAIKE GOLF CENTER

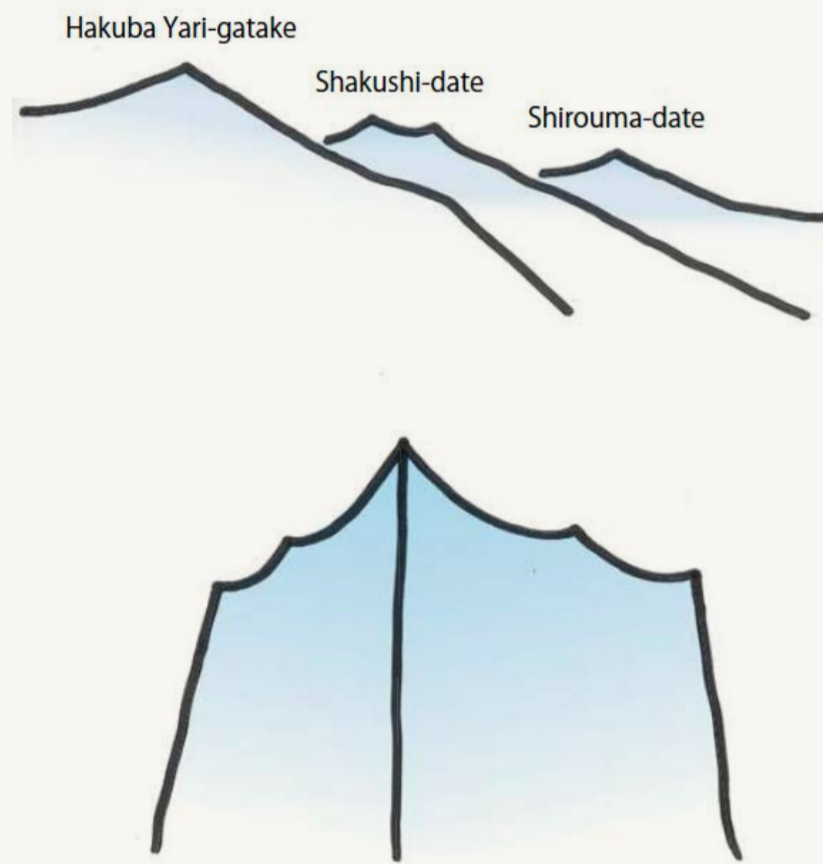


# Design Concept

The elegant building outline and design for MIRU Residences Hakuba is Japanese design at its best. The building form evokes the surrounding ridges and peaks. Large picture windows giving the occupant full views of the mountain ranges and forests. Internal details have been carefully considered with traditional Japanese concepts and efficiency. A true exercise in form and function.

## 01

Hakuba Three Peaks

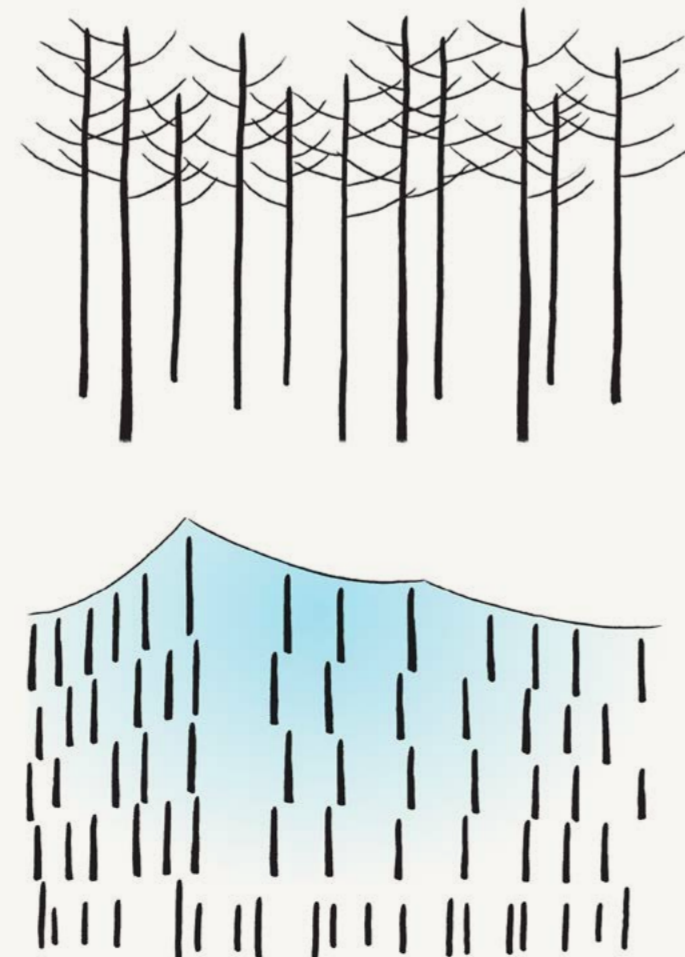


### RIDGE

Hakuba Village's landscape is characterized by the beauty of its majestic ridgelines, as represented by the Hakuba Three Peaks. By imitating this irreplaceable landscape in the roof shape, the building design will blend in with the surrounding landscape, despite being an iconic building. The roof shape will be distinctive and beautiful not only when viewed from the access road, but also when looked down from the ski slopes.

## 02

Natural Larch Forest



### KARAMATSU (LARCH FOREST)

Karamatsu-dake and other mountains around Hakuba are covered with natural larch forests that are endemic to Japan. The larch trees grow straight up toward the sky, deciduous in winter and sprouting in spring, forming a very beautiful forest. The use of larch wood for the window sills and the abstract pattern of the larch forest on the façade will help the building blend in with the surrounding landscape.

## 03



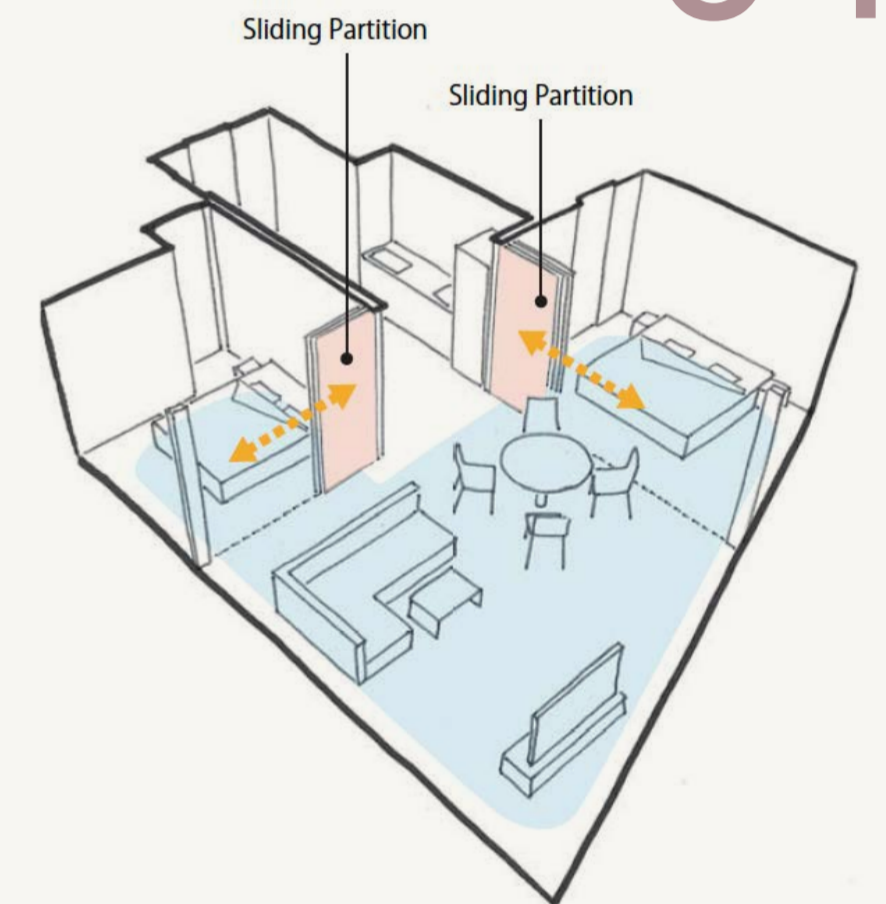
Window frame trims a scenery like a painting

### PICTURE WINDOW

Surrounded by nature, the site offers a richly varied landscape that changes from season to season, especially the silvery white world of winter. Each room has a picture window that captures this exceptional scenery like a painting. The penthouse on the top floor has a ceiling that matches the shape of the roof, creating a space that extends to the exterior.

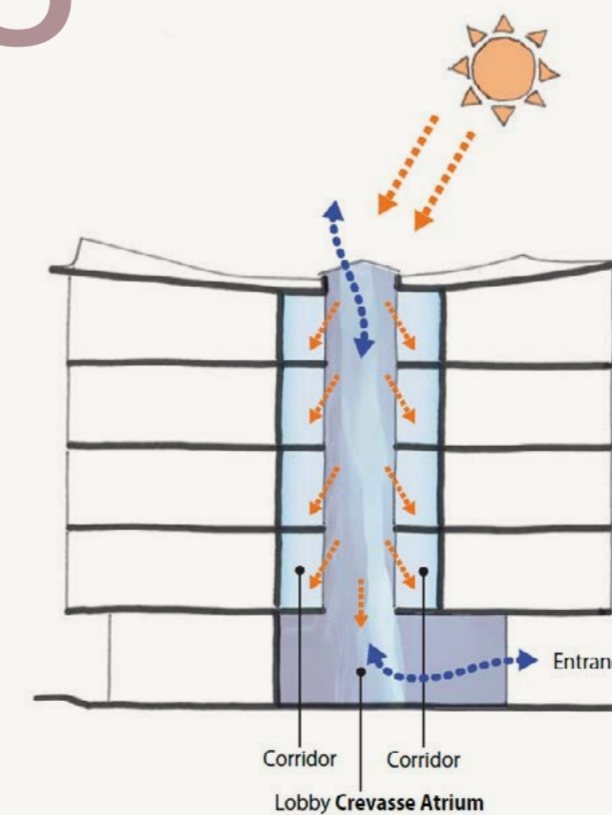
### SHOJI & FUSUMA

Traditional Japanese houses are loosely divided by movable partitions such as Shoji and Fusuma sliding doors. By opening up the partitions in a room, it becomes one space that is loosely connected to the rest of the house. By making full use of movable partitions instead of walls, each space can be tailored to the needs of different guests. When opened, the view from each room expands into a single view.



## 04

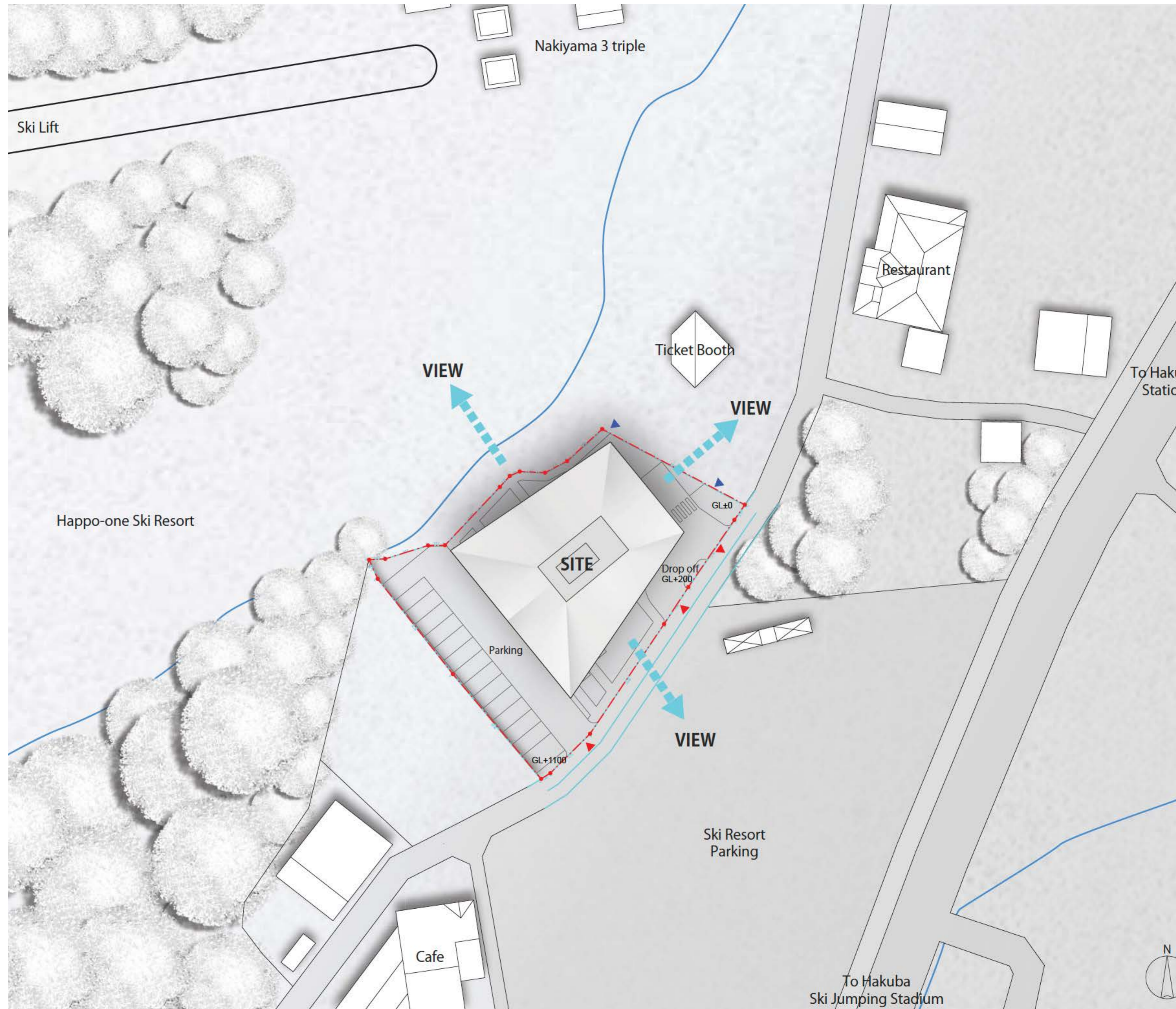
## 05



### CREVASSE

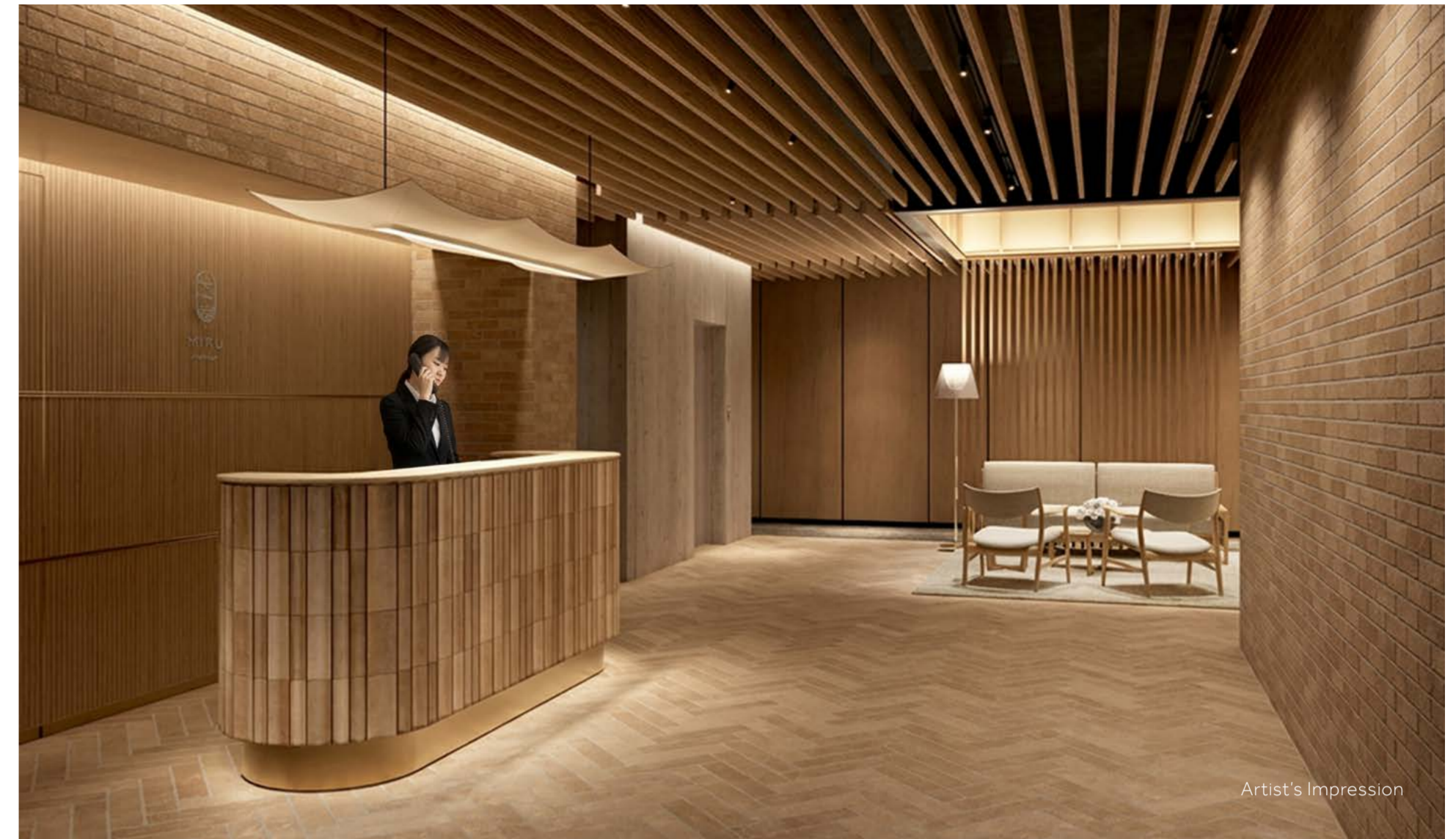
The Hakuba Grand Snow Canyon is one of the largest snow canyons in Japan. By creating a lobby space with a light-filled atrium, visitors are reminded of the crevasses in the snowy mountain range. The crevasse in the center of the building allows for a room layout with appropriate depth in accordance with the site shape, and also brings natural light and promotes natural ventilation to the dark, often-enclosed central corridor.

MIRU Residences Hakuba enjoys a ski-in ski-out location with wonderful views around, with the shops and restaurants of Hakuba village a short walk away.



# The Entrance

The entrance lobby of MIRU Residences Hakuba features a reception counter, ski room for skis and boots, and a common living area under a natural skylight. Guests can relax and enjoy light refreshments from our grab and go counter.





Artist's Impression

# The Residences

The apartments come fully furnished and fully appointed with large picture windows giving expansive views of the mountains and forest surrounding.

The typical kitchens are fully equipped with electric hob, convection microwave refrigerator, washing machine, with larger units equipped with dishwasher.



Artist's Impression

The bedrooms enjoy panoramic views of the mountains through large picture windows. Master bedrooms also have ensuite bathrooms.



Artist's Impression

Bathrooms are luxuriously appointed with heated automatic bidet WCs, temperature regulated rainshowers and bathtubs.

# Fine Finishes



## Ceiling

- 01: Vinyl Wallpaper
- 02: Decorative Board (Natural Wood Surface)

## Wall

- 03: Vinyl Wallpaper
- 04: Larch Wood Mullion
- 05: Ceramic Tile (Natural Stone Surface)

## Floor

- 06: Engineered Flooring
- 07: Ceramic Tile (Natural Stone Surface)

## Bathroom

- 08: Decorative PVC-coated Steel Wall
- 09: Slip-resistant Floor Tile
- 10: Fiber Reinforced Plastic Floor

Premium appliances, heating and air-conditioning have been selected for each apartment.

## miratap

SYSTEM KITCHEN



## LIXIL

LIFESTYLE BATHROOM



MIRU Residences Hakuba will be managed by MIRU Collection, a lifestyle boutique hotel operator and owner with a number of properties under the MIRU and WANDER brands.

# MIRU COLLECTION

For more information, visit  
[WWW.MIRUCOLLECTION.COM](http://WWW.MIRUCOLLECTION.COM)



MIRU NISHIKI  
KYOTO HOTEL

---

MIRU NISEKO  
HOTEL AND LODGES

---



MIRU GION  
KYOTO HOTEL

---



WANDER HOTEL  
KYOTO NANAJO

---



MIRU AMAMI  
AWARD-WINNING  
VILLA BEACH HOTEL

---



MIRU CHIANG RAI  
THAILAND  
(COMING SOON)

---



# The Architect

Kei Takeuchi graduated from Waseda University Graduate School in 1996 and began his professional career at the Design Division of Taisei Corporation. After earning his Master of Architecture with distinction from Harvard University in 2006, he joined Toyo Ito & Associates, Architects, where he worked for 16 years. He is currently the principal of Kei Takeuchi Architect & Associates.

In 2005, Takeuchi received the Peter Rice Prize, and in 2006, he became the first Japanese recipient of the Kevin V. Kieran Prize from Harvard University. In 2023, his project WITH HARAJUKU was awarded the BCS Prize by the Japan Federation of Construction Contractors.



## DISCLAIMER

While this brochure reflects the proposed development at the time this brochure was created, the information provided is general in nature. The images, designs, layouts, dimensions, characteristics, finishes, fixtures and fittings and other information contained in this brochure (Property Information) are indicative only and subject to change without notice. We recommend that you undertake your own enquiries, obtain independent legal advice and confirm the current Property Information at the time you enter into any purchase contract. This brochure does not constitute part of an offer or contract. Furniture and home decorator items shown are not included in the purchase price. The Developer and its associated entities do not accept any liability for any reliance upon this brochure.

Design by KORABO Singapore



MIRU  
RESIDENCES  
HAKUBA

