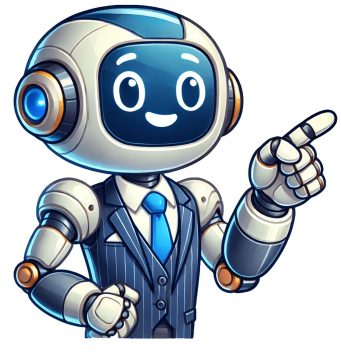


I'm not a robot























## Christian louboutin size guide

To find the perfect size in Louboutin heels, follow these steps: After years of buying hundreds of pairs, I've found that a size 37.5 EU is right for me. Here's how to determine yours: 1. Start by trying on shoes in store, as this will allow you to try different sizes and models. 2. Don't rush into buying - take your time and make sure your feet fit comfortably without socks or inserts. 3. Relaxed and dry feet are best for finding the perfect fit. 4. Christian Louboutin heels usually run in IT/EU sizing, which is half a size smaller than FR shoes. 5. If you're unsure, compare your sneaker size to get an idea of what to expect. 6. Consider buying at least two sizes to avoid ruining a special gift if the fit isn't right 1. I highly recommend trying different models before committing to one - and remember, it's all about finding that perfect fit Given article text here Given article text here very hot is harder to stretch around your foot. Natural leather mold over time with more wear on them. If buying pre-owned Louboutin from reseller marketplaces like Vinted, keep this in mind if you feel good but just tight can try taking them to a cobbler to stretch. Special event or day use: If first Louboutin this will be a shoe you will wear for lifetime. Durable and always trendy iconic models. Do not buy if they are not fitting perfectly thinking it just one off, an important purchase that can wear over years. Inserts to increase comfort: Personally I wear heels without inserts yet it's personal choice as our feet not all same. If sure want wear inserts make shoes comfortable definitely size up half size try with inserts already. Don't fix retroactively and since Louboutin does half size go for your true size neither 1-2 sizes up. Here are some shopping tips for Louboutin shoes: 1. Be careful when trying on Louboutins as they can be damaged easily. 2. Consider buying from a store for extra safety, especially if it's your first pair. 3. Take your heels to a cobbler right after buying them and get the bottom resoled in red. 4. Buy multiple sizes online to ensure you find the right fit. 5. Get advice from brand experts at Louboutin boutiques or by phone/email for personalized feedback. 6. Consider your shoe material, as natural leather will stretch over time while patent leather is more durable but doesn't mold to your foot. 7. The pitch (or heel height) makes a big difference in comfort and wearability, so choose heels that are manageable for you. 8. Check the size of the toe box, especially if you have wider feet or longer toes, to ensure you find the right fit. 9. Consider buying classic styles like the Kate, which has a sleek silhouette and is always in style. For those seeking to purchase a Kate-style shoe from Louboutin, it is generally recommended to order half a size up due to the narrow sole and toe box design. However, this measurement may vary for some individuals, who may need to opt for a full-size upgrade. The So Kate style takes center stage among Louboutin's offerings, boasting an elevated arch and a slender, pencil-thin heel with no platform. Despite its striking appearance, the shoe provides limited support, making it less desirable for everyday wear. In contrast, the Iriza model showcases a timeless take on the classic half d'Orsay heel, featuring a closed toe and open side panel. This design allows for greater room within the shoe, providing comfort for those with wider feet. Those seeking an alternative to the So Kate or Kate styles may find solace in the Pigalle stiletto, which features a thicker, more supportive sole than its counterparts. Christian Louboutin offers several comfortable and stylish options, including the New Very Privé heels which may be more roomy than others. However, they tend to run small, so sizing up is recommended. The Santia Botta cowboy boots are another option, with a 85mm heel that balances height and practicality. For those with wider feet, sizing up a half-size or more might be necessary. Block heels like the Jane Mule or Adoxa bootie offer an alternative to stilettos, while sneakers are also available from Christian Louboutin. Despite some styles running true to size, it's always best to follow the brand's sizing recommendations and consider individual fitting preferences. Christian Louboutin Sizing Guide: Dispelling Common Misconceptions When purchasing Christian Louboutin shoes, many people believe that larger sizes will result in a wider toe box and less material tightness. However, this is not entirely accurate. In reality, going up a size only affects the length of the shoe, while the width and material tightness remain unchanged. Unlike other brands, none of Christian Louboutin's shoes are pre-stretched. Instead, most materials will gradually loosen up over time as they mold to the wearer's foot after repeated wear. To help with fitting, the company's online specialists try on each style and provide general sizing advice on their website. A "Fit Suggestions" section is also available above the size chart, offering personalized guidance for each product. For accurate conversions between French sizes and UK/US sizes, refer to the "Size Guide" on the right side of the page. While Christian Louboutin shoes generally run true to size, individual fit preferences vary greatly depending on the wearer's foot shape and personal comfort level. You're free to make use of this material without worrying about permits, as long as it's already in the public domain or an applicable exception applies. Keep in mind that no guarantees are made, and the license might not cover all the permissions you need for your intended purpose. For instance, other rights like publicity, privacy, or moral rights might still limit how you can use the material. Christian louboutin size guide men. Christian louboutin trainers size guide. Christian louboutin heel size guide. Christian louboutin belt size guide. Christian louboutin shoes size guide. Christian louboutin so kate size guide. Christian louboutin size guide uk. Christian louboutin pigalle plato size guide. Christian louboutin size guide cm. Christian louboutin men's shoes size guide. Christian louboutin size guide women.