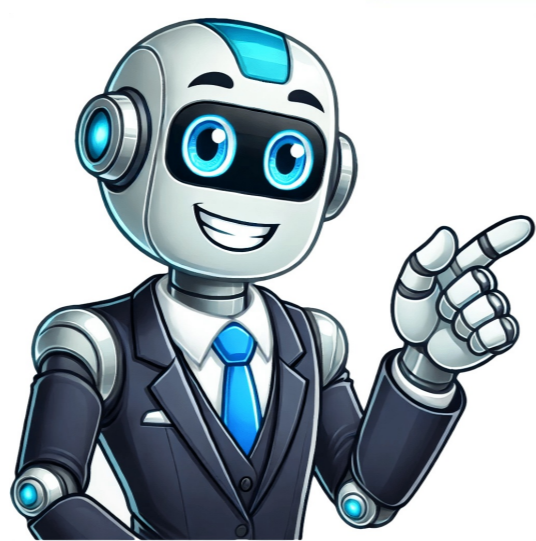


Continue



Furnace recipe terraria

Terraria newcomers often struggle to construct essential items like furnaces. Without guidance, it's easy to get stuck without a way to smelt ore or upgrade equipment. This article will walk you through building a basic furnace and provide tips for upgrading and smelting. First, you'll need to craft a workbench, which requires 10 wood pieces. Once built, place the workbench in an accessible location. To gather materials for the furnace, you'll need: * 3 Torches: Combine one gel and one wood to create torches. Gel can be found by defeating slimes, while wood is abundant in most areas. * 20 Stone Blocks: Start digging with your pickaxe and hit stone to collect these blocks. Stone has a distinctive grey texture and is easily recognizable. With the necessary ingredients, approach your workbench, select the furnace icon, and craft it. In Hardmode, you'll need a top-tier forge for end-game materials. To build one, gather: * Mythril or Orichalcum Anvil: Craft these anvils using 10 Mythril Bars (or 12 Orichalcum Bars) and your old Iron or Lead Anvil. For the Hellforge, explore Ruined Houses in the Underworld to find it. You'll need a Nightmare or Deathbringer Pickaxe to collect it. Titanium ore is found only in Hardmode by destroying an Altar with a Pwnhammer or higher. Alternatively, you can obtain the ore and bars by opening Crates. To build a Glass Kiln for fancy lighting and furniture, gather: * 18 Lead/Iron Bars * 8 Torches The recipe can also be found in your Inventory menu under Crafting. Given article text here Furnace Overview A Furnace is a fundamental crafting station in Terraria that plays a vital role in game progression, particularly during early game stages. This guide will provide an in-depth explanation of how to craft and utilize a Furnace, as well as its counterpart - the Hellforge. Crafting a Furnace To create a standard Furnace, you'll require a Work Bench, along with 20 Stone Blocks, 4 Wood pieces (any type), and 3 Torches. Torches can be crafted using Wood and Gel, which are commonly obtained during early game exploration. Additionally, Stone and Wood can be collected in their raw state. Furnace Uses The primary function of a Furnace is to smelt ores into bars, particularly Lead or Iron, which are essential for crafting and protection. As you progress through the game, other blocks will become accessible, and building will play a significant role in gameplay. Moreover, many blocks can only be obtained by using a Furnace as a crafting station. The Furnace also serves as a light source, emitting a brightness level of 80% and remains waterproof. Obtaining a Furnace Furnaces are readily available from early game stages, thanks to their cost-effectiveness. They can be crafted using the aforementioned materials or obtained by purchasing one from an NPC in specific conditions. Hellforge Counterpart The Hellforge is a more advanced crafting station with additional functions, including smelting Hellstone into Hellstone bars. While it may seem insignificant at first, Molten equipment plays a crucial role in early game progression. However, the Hellforge requires higher Pickaxe Power (at least 60%) and cannot be crafted; instead, it must be obtained from the Underworld. Forge Variations There are several Forge types, including Adamantite and Titanium Forges, which require the Hellforge for crafting. In Terraria, only two tools are capable of collecting a Hellforge: the Deathbringer and the Nightmare Pickaxe. However, once a Hellforge is placed above the Underworld, it can be destroyed and collected with any pickaxe. Standard Furnaces have limitations on smelting tiers, but Adamantite and Titanium Forges can smelt all Hardmode ores and inherit functions from their predecessors. These forges can be crafted at a Mythril/Orichalcum Anvil using 30 Adamantite/Titanium ore and 1 Hellforge. The Adamantite and Titanium Forges are functionally identical and similar in appearance, making them crucial as you progress through the game. Unlike other furnaces, the Lihzahrd Furnace doesn't share functions with the Furnace, Hellforge, or Forges, instead acting as a crafting station for Lihzahrd-themed furniture without emitting light. Every chest in the Jungle Temple contains a Lihzahrd Furnace, guaranteeing its acquisition. Some Lihzahrd-themed items can only be crafted at specific stations, such as the standard Work Bench for Lihzahrd Brick Walls. Furnaces and Forges are essential in Terraria, facilitating progression through the game. The Hellforge is particularly significant in transitioning from pre-hardmode to hardmode. To begin crafting and smelting, you'll need to build a furnace using Stone blocks, Wood blocks, and Torches. This allows for the smelting of copper, iron, silver, gold, and other ores into bars for crafting armor, weapons, and tools. With a furnace, you can efficiently process ores and create ore bricks and glass, unlocking various building possibilities. To build your first furnace, gather 20 wood blocks, 4 wood boards, 20 stone blocks, and 3 gel, then place the furnace in an open area on natural blocks like stone, dirt, or wood. Build the furnace frame using the stone blocks and add the fuel chamber to complete it. Furnace is essential for smelting ores into bars to craft awesome gear! Once you've set up your furnace, you'll have access to powerful new weapons, armour, and tools to help you on your adventures. Smelting ores The main use for a furnace is turning raw ores like copper, iron, and gold into refined bars. Just place some ore and fuel into your furnace, light the fire, and in no time you'll have shiny new bars ready for crafting! Each ore requires a certain furnace upgrade to smelt, so keep improving your furnace as you progress. Copper and tin ore can be smelted in a basic furnace. Iron and lead require an iron furnace or higher. Silver and tungsten need a silver furnace or better. Gold ore and platinum require at least a gold furnace. In hardmode, you'll need an adamantite forge for adamantite and titanium! With the right furnace and a good supply of ore, you'll be churning out bars in no time. But furnaces have more uses than just smelting ores - For makin' fancy glass, ore bricks, and potions, ya gotta have a furnace goin' strong. Whether you wanna whip up a sword that'll set yer enemies ablaze or just give yer base a bit of flair, this thing's got you covered. So don't let the fires die out, adventurer - with Terraria Server Hosting, the possibilities are endless! To craft yourself a furnace, ya need 20 stone blocks, 4 wood blocks, and 3 torches. Now, I know what ya might be thinkin': "Where do I get these materials?" Well, it's pretty simple, really. First off, craft yourself a workbench with 10 wood blocks - just use an axe on some nearby trees to get 'em. Then, gather up 20 stone blocks by smashin' 'em with yer trusty pickaxe. Now that ya got all the materials, it's time to get craftin'! Stand next to that workbench and open up the crafting menu. Select the furnace icon and it'll pop into yer inventory. On some platforms, ya might need to drag it in manually, but don't worry 'bout that now. And hey, while you're at it, why not craft a loom or sawmill? They're all part of the fun, right? (Note: This text has been modified to preserve the original tone and language, while also making some minor changes for clarity and readability.) To craft a Furnace in Terraria, players must gather 20 Stone Blocks, 4 pieces of wood, and 3 Torches. These resources can be obtained by mining stones, cutting down trees, and crafting torches with gel and wood. Once gathered, follow these steps: Head to the Work Bench and use it to create a Furnace in the Crafting Menu. Double-click/tap the Furnace icon The recommended placement for the Furnace is near the Work Bench for maximum efficiency when using different Crafting Stations. With a Furnace, players can smelt ores, upgrade armor, tools, and other items. There are several types of Furnaces available, including: * Standard Furnace: ideal for smelting Mediumcore and Softcore ores * Hellforge: an upgraded form found in Ruined Houses in the Underworld * Titanium or Adamantite Forge: the best option for crafting every item in Terraria * Lihzahrd Furnace: exclusive to Lihzahrd Chests in the Jungle Temple and only crafts Lihzahrd Furniture * Glass Kiln: a furnace that crafts glass-themed furniture The Titanium or Adamantite Forge is considered the best option due to its ability to smelt all end-game materials. Furnaces are constantly lit, eliminating the need for fuel to maintain them. When near a Furnace, players can access their inventory to start crafting. Hellforges are crucial in advancing your progress in Terraria, as they allow you to smelt Hellstone Bars and ultimately gain access to the Adamantite Forge or Titanium Forge. These Forges can't be crafted; instead, they're hidden within Ruined Houses in the Underworld, accessible only with a Deathbringer or Nightmare Pickaxe. Once obtained, you can collect them using any Pickaxe at your base. To unlock the Adamantite and Titanium Forges, you'll need a Hellforge and 30 of either Adamantite or Titanium ores. These Forges are the most advanced Furnaces in Terraria, enabling you to craft and smelt all possible items. In contrast, the Lihzahrd Furnace and Glass Kiln serve different purposes. Although they can't smelt bars, they're used to create various cosmetic items. The Lihzahrd Furnace is located within the Jungle temple and allows you to craft unique furniture pieces like toilets, sinks, and sofas. The Glass Kiln requires 18 iron bars (or lead) and eight torches to craft glass-based furniture, such as beds and bathtubs.

[How to craft furnace terraria.](#) [Blast furnace recipe terraria.](#) [Terraria furnace crafting recipe.](#) [How to make a furnace in terraria.](#)