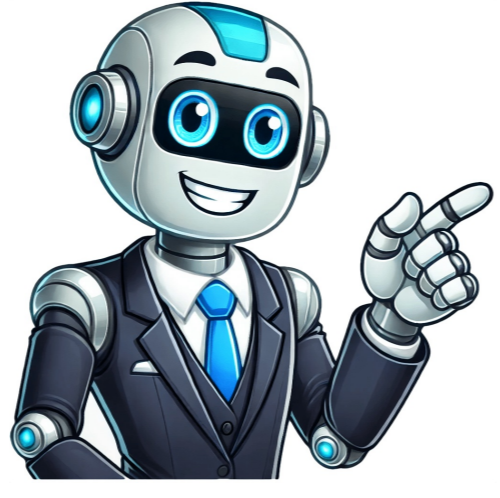


Continue



Celestial tarot cards meanings

Renowned astrologers Kay Steventon and Brian Clark collaborated on the Celestial Tarot, infusing it with mythological imagery, astronomical symbolism, and planetary connections woven together with zodiac signs, constellations, and stars. This unique deck combines astrological elements to create a captivating experience. The Fool, The Magician, The High Priestess, The Empress, The Emperor, The Hierophant, The Lovers, The Chariot, Strength, The Hermit, Wheel of Fortune, Justice, The Hanged Man, Death, Temperance, The Devil, The Tower, The Star, The Moon, The Sun, Judgement, and The World are just a few of the 78 cards that make up this extraordinary tarot deck. The night sky has long been a source of inspiration for humanity, filled with archetypal images, symbols, and stories that have captivated us for centuries. Our ancestors used these star patterns to bring their myths to life, creating a celestial landscape that shapes the imagery of Celestial Tarot. The 78 cards of this tarot deck are rooted in ancient traditions of astrology, astronomy, and mythology. By projecting the tarot onto the vast canvas of the heavens, Celestial Tarot taps into the symbolism and mythology of the planets and constellations, amplifying the meaning of contemporary cards while honoring the oldest forms of divination. This tarot deck boasts a symmetrical structure, with the 22 Major Arcana cards represented by the twelve zodiacal constellations and ten planets of modern astrology. Each minor suit is associated with one of the four astrological elements, and the Court Cards feature Princesses embodying each season, while the Prince, Queen, and King of each suit represent the mutable, fixed, and cardinal signs of their respective elements. Guided by tarot tradition and her own creative vision, Kay Steventon has crafted a tarot deck for a new era – one that engages enthusiasts with the ancient art of astral divination. The visual imagery of astrological constellations and mythological symbols awakens the imagination, offering an exciting new way for both tarot enthusiasts and astrologers to connect with the celestial world. The Celestial Tarot takes ancient tarot practices to new heights by harnessing celestial powers to reveal profound insights and guidance for those seeking self-discovery. This mystical deck combines astrology, astronomy, and mythology to create a unique fusion of tarot archetypes and symbolism. The Major Arcana is represented by zodiacal constellations and planets, while the Minor Arcana incorporates the four astrological elements - Earth, Air, Fire, and Water. The Celestial Tarot Deck is a unique tool for divination and self-reflection that combines tarot readings with astrology. Each card in the deck has its own specific meaning, drawing from the symbolism of zodiacal constellations, planets, and astrological elements. The Major Arcana cards represent significant life events and are associated with the planets, while the Minor Arcana cards depict everyday events linked to the zodiacal constellations. Each card in the deck contains a Qabalistic Tree Of Life glyph in the bottom right corner, reflecting its connection to the Golden Dawn's Tarot teachings. The astrological signs play a crucial role in the symbolism of the deck, with each sign connected to a specific planet and its meaning incorporated into the cards' meanings. For instance, Aries is linked to Mars, symbolizing action and energy, while Venus represents love and beauty, and Saturn signifies discipline and responsibility. Furthermore, the four astrological elements – fire, earth, air, and water – are also integral parts of the deck's symbolism, with each element having its own distinct meaning reflected in the cards. The suit of Swords, for example, is associated with the element of air and represents intellect and communication. Understanding the symbolism within your Tarot deck is essential for accurate readings. By studying the cards and their meanings, you can gain valuable insights into your life and the world around you. The Celestial Tarot Deck is an ideal choice for those interested in Astrology, Tarot, Elemental Forces, and Qabala. Its unique blend of imagery and symbolism makes it a powerful tool for divination and self-discovery. The Major Arcana cards of the Celestial Tarot Deck hold significant power and meaning, representing milestones in the human soul's journey. Each card offers a unique perspective on life's broader lessons and themes. ### The Fool card represents new beginnings and the start of an adventure, encouraging us to take a leap of faith and trust in our path ahead. It signifies unexpected change and a fresh start. ### The Magician symbolizes manifestation and personal power, highlighting the ability to bring desires into reality through focused intention. This card signals a new phase filled with abundance and momentum. ### The High Priestess embodies intuition and inner wisdom, urging us to trust our instincts and tap into our subconscious. She invites us to be more aware of our inner life, including emotions, bodily reactions, and mood swings. ### The Empress represents abundance, fertility, and nurturing, reminding us to appreciate the beauty and abundance in nature. This card predicts a phase of growth and abundance, encouraging creativity and passion. ### The Emperor symbolizes structure and authority, guiding us to take control of our lives and establish boundaries. With this card, we gain dominion over our current situation and are empowered to be in control. ### The Hierophant represents tradition and spirituality, urging us to enhance our spiritual connection and seek divine guidance. On an aracular level, the card signals a desire to direct our passions toward self-knowledge and understanding while remaining grounded in the world. ### The Lovers card signifies romantic love, partnership, and choices between different paths or options. When this card appears, the consciousness of partnership and equality is awoken, accompanied by a sense of separateness, duality, and individuality. ### The Chariot represents willpower, determination, and taking control of our lives to move forward towards our goals. The card suggests that we must overcome emotional inertia and direct our emotions forward with purpose and intention. lwbStrength and resilience are key to overcoming challenges, as represented by lwbStrength, which embodies inner fortitude, courage, and self-discipline. This card can indicate a period of personal growth and transformation, where individuals must confront their deepest fears and insecurities. lwbThe Hermit represents introspection and self-reflection, urging individuals to turn inward for guidance and wisdom. Virgo's influence highlights the importance of respecting one's own cycles and destiny. lwbThe Wheel of Fortune suggests that life is constantly in flux, with changes happening beyond our control. This card often indicates a significant shift in one's circumstances, requiring adaptability and flexibility. lwbJustice symbolizes balance, fairness, and accountability, reminding individuals to act with integrity and make decisions that align with their values. lwbThe Hanged Man represents sacrifice and surrender, encouraging individuals to let go of external attachments and focus on inner growth. This card can also indicate a need for patience and suspension of judgment, allowing one to tap into their subconscious mind. lwbDeath signifies transformation and renewal, urging individuals to release the past and embrace new beginnings. lwbTemperance promotes balance and harmony, suggesting that individuals must find equilibrium in all aspects of life. This card often represents a phase of spiritual awakening, where self-reflection and introspection are essential for growth. lwbThe Devil represents temptation and negative patterns, but also offers the opportunity to break free from these constraints and nurture one's creative potential. lwbThe Tower signifies sudden change and upheaval, requiring individuals to release what no longer serves them to make space for new growth. This card can indicate a major turning point in life, where old structures must be dismantled to build something new. lwbThe Star represents hope and renewal, symbolizing a fresh start or new beginning in one's life. lwbThe Moon embodies intuition and the subconscious mind, highlighting the importance of listening to one's emotions and trusting one's inner wisdom. The Celestial Tarot Deck offers guidance through its Major Arcana, where each card holds deep symbolism, connecting to our inner selves. The Moon suggests trusting instincts amidst uncertainty, listening to intuition, and acknowledging internal guidance. In contrast, the Sun represents vitality, success, and joy in the present moment, suggesting a phase of creativity and personal growth. The Judgment card embodies self-reflection, evaluation, and inner calling, urging us to listen to our inner voice and make changes aligned with our true purpose. The World card symbolizes completion, fulfillment, and achieving one's goals, representing a time when the soul is evident in the world, not separated from it. The Minor Arcana in the Celestial Tarot Deck represents everyday life, offering insights into various astrological and zodiacal constellations. Understanding each card's elemental associations, numerical symbolism, and astrological connections allows seekers to uncover archetypal images and mythological characters resonating with their souls. The numbered cards (Ace to 10) in the Minor Arcana symbolize progress and evolution in different areas of life, from new beginnings to completion and fulfillment. The Court cards in the Celestial Tarot Deck, comprising the Princess, Prince, Queen, and King, hold symbolic meanings that can be applied to people or situations. They provide insight into relationships, dynamics, and interactions. The Princess cards are connected to a specific season and represent cyclical phases in life. When reading tarot cards, it's crucial to consider the suits (Wands, Pentacles, Cups, Swords) and numbers, as they reveal elemental energies. The Minor Arcana cards can be grouped into four suits, each linked to an element: Water (Cups), symbolizing emotions and relationships; Earth (Pentacles), representing abundance and practicality; Air (Swords), highlighting thoughts and communication; and Fire (Wands), embodying passion and creativity. By understanding these elemental influences, tarot readings can offer valuable insights into energies and dynamics. The Court cards also hold significant meaning. The Princess archetype represents youthful enthusiasm and curiosity, while the Prince embodies boldness and decisive action. The Queen symbolizes nurturing energy and maternal care, whereas the King represents leadership and authority. In interpretation, consider the ruling element and its associated attributes when examining the Minor Arcana cards. For instance, the Water element may indicate a focus on emotions, while the Earth element may suggest stability and practicality. Understanding these elemental correspondences can provide deeper insights into specific areas of life and offer guidance in tarot readings. Prince embodies action, passion, and determination, symbolizing creativity, ambition, and adventure. The Queen exudes nurturing and emotional intelligence, representing compassion, intuition, and emotional sensitivity. The King reflects authority, leadership, and wisdom, bringing intellect, communication, and clarity to the reading. Understanding the elemental correspondences of each court card archetype allows readers to decipher the energies and traits that each card embodies. By recognizing and interpreting these characteristics, readers can provide valuable insights and guidance for the querent's journey. The text describes various interpretations of tarot cards, assigning meanings to different numbers (Ace to Ten) and court cards (Prince, Princess, Queen, King). Each card is associated with a unique theme or message, such as growth, relationships, conflict resolution, change, and personal development. For the Major Arcana (wands), it discusses the themes of creativity, passion, and self-expression. The numbers have distinct meanings: Ace represents new beginnings, Two symbolizes balance, Three denotes transformation, Four signifies stability, Five embodies freedom, Six represents harmony, Seven signals growth, Eight promises abundance, Nine indicates completion, and Ten foretells renewal. The court cards are associated with different aspects of human experience: Prince (youthful energy), Princess (emotional maturity), Queen (sensuality and stability), and King (logic and fairness). They embody various qualities such as intuition, creativity, emotional balance, and rational thinking. In the Cups Major Arcana, the numbers have distinct interpretations related to emotions and relationships. Ace represents new relationships, Two signifies transformation, Three indicates complexity, Four requires confrontation, Five denotes healing, Six symbolizes strength, Seven signals heroic labor, Eight implies a journey of the heart, Nine promises fulfillment, and Ten encourages reflection. The overall message emphasizes the importance of self-awareness, emotional balance, and personal growth in navigating life's challenges. New Relationships and Self-DiscoveryThrough the lens of tarot cards, we find ourselves at a crossroads, The Queen, representing a charismatic woman, brings forth emotions, forcing us to confront our true selves. This may signal the emergence of a creative side or a new romantic connection. Meanwhile, the King, embodying time, encourages maturity and mastering one's emotions. The Celestial Tarot cards hold symbolism and meaning that can guide users towards insight and clarity. To tap into this, it's essential to trust intuition and understand card meanings. Each card has a unique significance, requiring knowledge and practice to interpret accurately. When working with the Celestial Tarot, consider the following steps: * Trust your inner voice and focus on the card * Understand the card meanings to gain insight into your life * Use the cards as a guide for decision-making and clarity * Seek wisdom and knowledge to improve interpretation * Practice regularly to hone your skills Preparing yourself and environment is crucial before starting a reading. This involves: * Clearing your mind of distractions through deep breathing exercises * Visualizing the answers you seek with a clear intention * Cleansing the cards to remove negative energy or blockages To enhance your Celestial Tarot reading experience, start by meditating before your session to settle into a relaxed state of mind. You can utilize guided meditations or focus on your breath. Additionally, incorporating crystals like clear quartz, amethyst, or rose quartz can amplify your energy and intentions. Creating a ritual around your tarot reading is essential in setting the tone and creating a sacred space. Light candles, burn incense, or play soothing music to establish a peaceful atmosphere. Choose elements that resonate with you and your intentions. Before beginning, find a quiet and peaceful area where you can focus your energy and connect with the celestial realm. Consider lighting candles, burning incense, or playing soft music to enhance the ambiance. Keeping a tarot journal can also be beneficial in tracking progress and deepening understanding of Celestial Tarot readings. To perform a successful reading, choose a spread that aligns with your question or intention. The Celtic Cross and Three-Card Pull are popular options. Once you gain confidence, consider learning the Zodiac spread, which works magically with this deck. Familiarize yourself with astrology basics to unlock new meaning within each card's symbolism. As you pull tarot cards from the deck, focus on your question or intention for the reading. Take a moment to center yourself before interpreting the cards. Consider the symbols, colors, and imagery in each card, and think about how they relate to your question. The Celestial Tarot deck is designed to help users connect with the universe's energies and tap into their spiritual knowledge. To get started, it's essential to understand the deck's components and meanings. The official Celestial Tarot deck features mythic images, symbolism, and astronomy of the planets interwoven with astrological elements, zodiac signs, constellations, and stars. The accompanying guidebook provides insight into each card's meaning. When interpreting the cards, trust your intuition and focus on your intention. Set a clear question or area of life you want to explore, such as love, career, or transformation. Shuffle the cards while focusing on your intention, and then draw three cards for a simple yet powerful spread that can provide insight into your past, present, and future. As you practice reading the Celestial Tarot cards, remember that it takes time and patience. Start with the basics, understand the Major Arcana and Minor Arcana meanings, and keep journaling your readings to improve your skills. As you delve deeper into tarot, consider incorporating astrology and celestial events to amplify your insights and guidance. For beginners, practice regularly by drawing daily cards or performing simple three-card spreads to grasp the meanings. As you become more knowledgeable, experiment with complex spreads and interpretations. By aligning tarot readings with astrological principles, you can tap into a deeper understanding of energies at play. This can be done by considering zodiac signs associated with each tarot card, reflecting their characteristics and energies. Understanding astrological associations can provide additional layers of meaning and insight, helping to navigate life paths with clarity and wisdom. Another method is to pay attention to celestial events like planetary transits, lunar phases, and eclipses, which profoundly affect emotions and energy levels. For example, the full moon can heighten emotions, making certain cards more significant, while a retrograde planet may indicate introspection and reevaluation. To deepen your connection with Celestial Tarot, use it in conjunction with the moon's phases, such as setting intentions during the new moon. Explore spreads designed to incorporate astrological symbolism to focus on specific life areas or provide guidance during significant celestial events. By aligning cards with astrological houses or planetary positions, you can create a powerful tool for divination. Practice is key to unlocking the full potential of Celestial Tarot, allowing you to tap into its powerful energies and deepen your understanding of the universe. By embracing an open-minded approach and trusting your intuition, you can develop a profound connection with these cards and unlock their secrets. The Tree of Life glyph on each Major Arcana card signifies that this deck is deeply rooted in Qabalistic path work and meditation, making it an advanced tool for those seeking to explore the mysteries of Tarot. For those interested in delving deeper, Robert Wang's book "The Qabalistic Tarot Book: A Textbook Of Mystical Philosophy" offers a wealth of knowledge on this subject. As you embark on your Celestial Tarot journey, remember that practice is essential for mastery. Experiment with different spreads and interpretations to discover the full potential of these cards. With time and patience, your tarot readings will become infused with cosmic wisdom and profound insights. The Celestial Tarot is designed to bridge the gap between astrology and the ancient tradition of astral divination. By engaging with the star constellations and planets within the deck, you can unlock a deeper understanding of the universe and its secrets. This powerful tool can be used for divination, offering stunning insights into the spiritual realm. The Major Arcana cards hold deep symbolism and significance in Celestial Tarot, each representing a major theme or lesson in life. With their otherworldly quality, these cards offer guidance and wisdom that transcends the mundane. The Fool card, for example, represents fresh starts and new beginnings, urging you to take the leap of faith and embark on a journey of self-discovery. The Celestial Tarot and Zodiac Signs: Unlocking Your Destiny The tarot cards hold secrets to understanding our zodiac signs, revealing their unique traits, strengths, and weaknesses. By connecting with these symbols, we can gain deeper insights into our personality, life path, and destiny. Practical earth sign Taurus is often drawn to solid Hierophant energy, which represents tradition, conformity, and natural world connection - all core values. This influence brings stability and security, guiding them to appreciate structure and routine. Embracing Hierophant wisdom helps cultivate loyalty, commitment, and reverence for the world, leading to a grounded and peaceful existence. Curious air sign Gemini is naturally attuned to The Lovers' vibrant energy, representing relationships, choices, and communication - all essential themes. With The Lovers as guide, Gemini can develop authentic connections with others, navigating complex social networks with greater ease, tact, and sensitivity. Love is a mysterious force that brings joy and pain. Understanding the celestial tarot helps navigate romance, relationships, and self-love. Three influential cards illuminate the path: The Lovers, representing choices and commitment; The Empress, embodying nurturing and abundance; and the Knight of Cups, symbolizing romantic invitations. When the Chariot appears in a reading, it can signify taking control of your career or life path. This card advises you to tap into your inner power and determination to overcome obstacles and achieve goals. The Celestial Tarot is available for guidance on work and life path. It offers valuable insights to navigate careers and find fulfillment, whether seeking new job opportunities or switching paths. The Chariot represents control, willpower, and determination. When it appears in a reading related to your career or life path, you are signaled to take charge of your professional life and overcome challenges with effort. The Knight of Wands ignites passion and creativity in career and life path. It suggests taking bold steps forward, pursuing opportunities that bring excitement and joy, and trusting instincts. The Hermit guides toward introspection and self-reflection. In the context of career and life path, it advises taking a step back, seeking guidance from within, and trusting inner wisdom to illuminate the path ahead. The Celestial Tarot Deck offers powerful cards for spiritual growth and self-discovery. These cards hold the power to guide us through transformative experiences, helping us let go, renew, and find hope. The Hanged Man represents surrendering control and adopting a new perspective to break free from past shackles. This card encourages letting go of ego and attachment, allowing clarity and purpose to emerge. It's about embracing the unknown and trusting the universe. By releasing control, we open ourselves to new possibilities and experiences that can change our lives. Death, as a transformation and rebirth symbol, marks the end of an era, signaling it's time to release what no longer serves us. This card is not about physical demise but rather about creating space for the new to emerge. It reminds us that change is inevitable and we must embrace it to tap into its transformative power. The Star represents hope and inspiration, a spark of creation and pure potentiality. It's a beacon of positive energy, encouraging us to shine our light, share our gifts with the world, and trust in the universe's plan. Connecting with The Star gives us purpose and fills our hearts with hope, guiding us towards a brighter future. The Celestial Tarot cards offer guidance for navigating life's challenges. They serve as mirrors, reflecting challenges and providing insight into wisdom needed to overcome them. By tapping into their symbolism and themes, we can develop strategies to tackle obstacles and emerge stronger on the other side. The Five of Swords depicts defeat and isolation, indicating feelings of disconnection or internal battles that leave us drained and defeated. It's a signal to reassess our approach and seek new perspectives. As we navigate conflicts and weigh the costs of pursuing victory at any cost, it's crucial to assess whether we're fighting a battle that's no longer worth the effort. Sometimes, surrendering can be the wiser choice, allowing us to regroup and reassess our strategies. The Eight of Swords card depicts a figure bound and gagged between two pillars with no clear escape route, symbolizing feelings of being trapped or restricted in various aspects of life – whether it's a situation, relationship, or even our own minds. This card invites us to explore the ways we may be imprisoning ourselves by holding onto fears, anxieties, and self-doubt. By acknowledging these patterns, we can loosen the bonds that hold us back and discover a path towards liberation. The Ten of Wands represents the burden of carrying too much emotional, mental, or physical weight. It can indicate a sense of overwhelm as if the world rests on our shoulders. When this card appears, it may be a signal to delegate tasks, ask for help, or reassess our priorities. Are we taking on too much, trying to control every aspect of life? By acknowledging our limitations and sharing the load, we can find balance and harmony in the midst of chaos.

Celestial.su. Celestial tarot cards meanings 78 cards. Celestial tarot cards. Celestial tarot deck. Which tarot cards represent zodiac signs. Celestial tarot cards meanings pdf. What tarot cards represent capricorn. Celestial tarot. Kalan celestial tarot cards meanings. Celestial tarot cards meanings list. Five below celestial tarot cards meanings pdf. Kalan celestial tarot cards meanings list with pictures. What tarot cards represent. Celestial tarot cards meanings list 5 below. Celestial tarot cards meanings list with pictures.