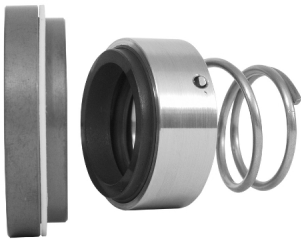




Vulcan Seals Type 8X  
Allweiler®  
Technical Data Sheet



Product Description

The Vulcan Seals Type 8X Allweiler® is an ‘O’-ring mounted conical spring 22mm seal with distinctive gasket mounted seat rings, to suit “SOB” and “SOH” series pumps. Clockwise rotation springs are standard. Frequently found on marine-based oil, bilge, and fuel transfer duties.

Why Choose the Vulcan Seals Type 8X Allweiler®?

Offering the technology of the Vulcan Seals Type 8 rotary joined to a stationary specifically designed to suit the seal chambers of these pump ranges.

Pump Ranges

The Allweiler® pump model includes the following pump ranges: “SOB” and “SOH”.

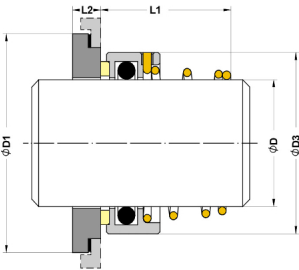
Standard Face Material Combinations

Elastomers	Rotary Face	Stationary Face	Metals	Complete Seal Code
Viton™/FKM	VCP1 Carbon	VSR1 Silicon Carbide	304 Stainless Steel	.V.D.

Dimensional Data

DØ (Metric)	Seal Size Code	D1 (mm)	D3 (mm)	L1 (mm)	L2 (mm)
22.00*	0220	44.00	33.00	21.50	11.25

Dimensions in mm  
\*Non-stock guarantee



©™ All product names, brands and trademarks shown are property of their respective owners, are for identification purposes only, and do not imply affiliation nor endorsement.  
\*\* All dimensional and identification information shown is given in good faith and is based on extensive experience gained in business. Performance data is not provided for this product range based on the Vulcan Seals design being a replacement of, or an improvement on, a design that has originally proved suitable for the equipment and service concerned.