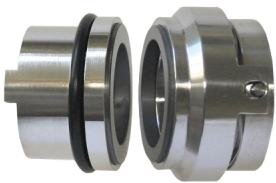




# Vulcan Seals Type 1690

## IMO®

### Technical Data Sheet



#### Product Description

The Vulcan Seals Type 1690 I.M.O.® can suit I.M.O.® ACE Series positive displacement pumps of generation 3 or above, fitted with “U” or “V” code shaft seals.

The Vulcan Seals Type 1690 I.M.O.® offers both performance and handling benefits over the OEM design, owing to the standard rotary plus stationary design instead of the original multi-component design that requires assembly on the shaft during installation.

The rotary part employs set screws to drive from the shaft the same as the original design, but the set screws can be readily accessed unlike the original.

The single-part stationary is also much easier to handle and install compared to the original.

For ACE pumps with “Q” or “T” code seals fitted, please use the Type 1689, and contact us for details on our alternative seals for ACE generation 1 or 2 pump models.

#### Why Choose the Vulcan Seals Type 1690 IMO®?

The Vulcan Seals Type 1690 IMO® can replace the five-part OEM seal supplied for ACE series pumps, generations 3 and above, we produce the following standard configuration seals with a rotary and a stationary, which are far easier to install than the original OEM seal:

- To replace OEM seal types “U” and “V” use the Vulcan Seals Type 1690
- To replace OEM seal types “T” and “Q” use the Vulcan Seals Type 1689

#### Pump Ranges

The IMO® pump model includes the following pump ranges: "ACE 025", "ACE 032" and "ACE 038" models of "K3", "L3" or "N3" generation or higher with "xQxx" or "xTxx" designation.

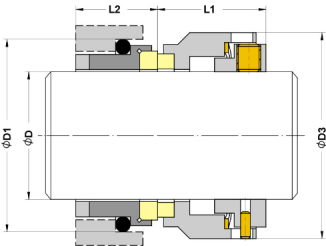
#### Standard Face Material Combinations

Elastomers	Rotary Face	Stationary Face	Metals	Complete Seal Code
Viton™/FKM	VSR1 Silicon Carbide	VSR1 Silicon Carbide	304 Stainless Steel	.V.S.

#### Dimensional Data

DØ (Metric)	Seal Size Code	D1 (mm)	D3 (mm)	L1 (mm)	L2 (mm)
22.00	0220	35.00	33.00	21.50	23.50

Dimensions in mm  
\*Non-stock guarantee



® ™ All product names, brands and trademarks shown are property of their respective owners, are for identification purposes only, and do not imply affiliation nor endorsement.

\*\* All dimensional and identification information shown is given in good faith and is based on extensive experience gained in business. Performance data is not provided for this product range based on the Vulcan Seals design being a replacement of, or an improvement on, a design that has originally proved suitable for the equipment and service concerned.