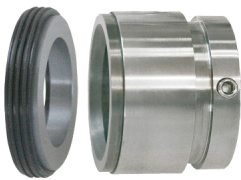




Vulcan Seals Type 41

Hidrostal®

Technical Data Sheet



Product Description

The **Vulcan Seals Type 41 Hidrostal®** highly robust, balanced multi-spring seal to replace Hidrostal® “X”-Type seals. The Vulcan Seals Type 41 Hidrostal®can also be used as an alternative to the rubber-encased "M"-Type seal.

Seal sizes 0286 to 0762 feature a boot-mounted stationary; sizes 0800 to 1000 feature a centrally mounted 'O'-ring stationary, while 1200 size has an L-profile 'O'-ring stationary with anti-rotation provision.

Why Choose the Vulcan Seals Type 41 Hidrostal®?

The **Vulcan Seals Type 41 Hidrostal®** is intended as both the media-facing impeller position seal and the bearing oil chamber seal. The ****Vulcan Seals Type 41 Hidrostal® ****offers the design benefits of the Vulcan Seals Type 40 rotary with a boot-mounted stationary, to suit the specific seal chamber dimensions.

Pump Ranges

The Hidrostal® pump model includes the following pump ranges: Hidrostal® models with relevant size "M" and "X" type seals fitted. Other OEM seal types can be fitted, please see also Vulcan Seals Types 11, Vulcan Seals Types 68 and Vulcan Seals Types 194 for more information.

Standard Face Material Combinations

Elastomers	Rotary Face	Stationary Face	Metals	Complete Seal Code
Viton™/FKM	VSR1 Silicon Carbide	VSR1 Silicon Carbide	316 Stainless Steel	.V.SS.
Nitrile	VSR1 Silicon Carbide	VTN1 Tungsten Carbide	316 Stainless Steel	.N.I.

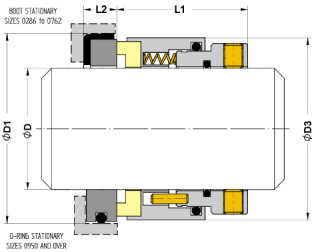
Dimensional Data

DØ (Imperial)	DØ (Metric)	Seal Size Code	D1 (in)	D1 (mm)	D3 (in)	D3 (mm)	L1 (in)	L1 (mm)	L2 (in)	L2 (mm)	OEM Ref.
1.125	28.58	0286	1.750	44.44	1.732	44.00	1.181	30.00	0.319	8.10	M1.1
1.500	38.10	0381	2.125	53.98	2.157	54.80	1.244	31.60	0.319	8.10	M1.5
2.000	50.80	0508	2.750	69.85	2.661	67.60	1.500	38.10	0.500	12.70	M2.0, X2.0
2.500	63.50	0635	3.375	85.73	3.082	78.30	1.812	46.02	0.562	14.28	M2.5, X2.5
3.000	76.20	0762	3.875	98.43	3.689	93.70	2.062	52.37	0.625	15.88	M3.0, X3.0
3.150*	80.00	0800	4.134	105.00	3.937	100.00	1.744	44.30	0.781	19.84	-
3.740*	95.00	0950	4.876	123.85	4.441	112.80	2.477	62.90	0.649	16.50	X095
3.937*	100.00	1000	4.876	123.85	4.692	117.50	1.902	48.30	0.500	12.70	X100
4.724*	120.00	1200	5.625	142.88	5.575	141.60	1.902	48.30	0.500	12.70	X120

Please note, size code "0200" for OEM "G020K" is Vulcan Seals Type 19B and "G020KZ" is Vulcan Seals Type 194M.

Dimensions in mm and inches

*Non-stock guarantee



© ™ All product names, brands and trademarks shown are property of their respective owners, are for identification purposes only, and do not imply affiliation nor endorsement.

** All dimensional and identification information shown is given in good faith and is based on extensive experience gained in business. Performance data is not provided for this product range based on the Vulcan Seals design being a replacement of, or an improvement on, a design that has originally proved suitable for the equipment and service concerned.