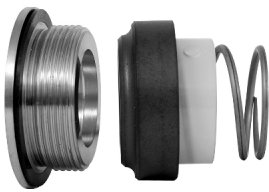




Vulcan Seals Type 93B

22mm Alfa Laval®

Technical Data Sheet



Product Description

The Vulcan Seals Type 93B 22mm Alfa Laval® is a unique design of 'O'-Ring rotary seal with an externally mounted threaded gasket mounted stationary, to suit the seal chambers of Alfa Laval® GM® series centrifugal pumps.

The Vulcan Seals Type 93B 22mm Alfa Laval® is a direct replacement seal design and is available in a range of material combinations, including fully FDA/EC1935 compliant grade materials.

Please see further Vulcan Seals Type 91, Vulcan Seals Type 92, and Vulcan Seals Type 93 datasheets for our full range of seals to suit Alfa Laval® centrifugal pumps.

Why Choose the Vulcan Seals Type 93B 22mm Alfa Laval®?

The Vulcan Seals Type 93B 22mm Alfa Laval® is a direct replacement design to suit the original equipment, produced to Vulcan Seals' manufacturing standards.

Pump Ranges

The Alfa Laval® pump model includes the following pump ranges: "GM1", "GM1A", "GM2", "GM2A", "ME155AE" and "MG166E" centrifugal pump models.

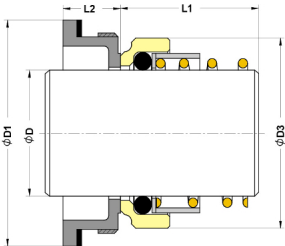
Standard Face Material Combinations

Elastomers	Rotary Face	Stationary Face	Metals	Complete Seal Code
EP	VCP1 Carbon	304 Stainless Steel	304 Stainless Steel	.E.Q.
EP	VCP1 Carbon	VSR1 Silicon Carbide	304 Stainless Steel	.E.D.
EP	VSR1 Silicon Carbide	VSR1 Silicon Carbide	304 Stainless Steel	.E.S.
EP FDA/EC1935 GRADE	VCD1 Carbon	VSS1 Silicon Carbide	316 Stainless Steel	.E.DR.

Dimensional Data

DØ (Metric)	Seal Size Code	D1 (mm)	D3 (mm)	L1 (mm)	L2 (mm)
22.00	0220	43.00	37.50	33.00	14.70

L1 Length stated in the table above is the free (uncompressed) height
Dimensions in mm
*Non-stock guarantee



© TM All product names, brands and trademarks shown are property of their respective owners, are for identification purposes only, and do not imply affiliation nor endorsement.

** All dimensional and identification information shown is given in good faith and is based on extensive experience gained in business. Performance data is not provided for this product range based on the Vulcan Seals design being a replacement of, or an improvement on, a design that has originally proved suitable for the equipment and service concerned.