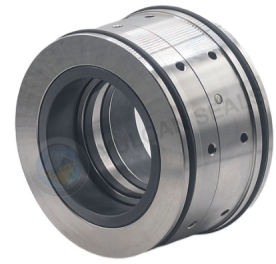




Vulcan Seals Type 1642

Wilo®

Technical Data Sheet



Product Description

The Vulcan Seals Type 1642 Wilo® is a direct replacement for the current generation of "Enclosed Block" or "EBS" push-fit seals fitted to Wilo® EMU® submersible pumps. For 75mm size and older generation design please see the Vulcan Seals Type 1640 data sheet for details.

The current Vulcan Seals Type 1642 Wilo® has two secondary seals in contact with the pump shaft, and Vulcan Seals Type 1640 has a single larger secondary seal.

The Vulcan Seals Type 1642 Wilo® is available as a complete mechanical seal assembly with the steel housing in place or as a repair kit without the non-wearing metal parts.

The kits comprise both stationary faces, with 'O'-rings, a central rotary face with an elastomeric diaphragm, anti-rotation pins and springs for both stationaries and retaining pins for the collets.

Why Choose the Vulcan Seals Type 1642 Wilo®?

- The Vulcan Seals Type 1642 Wilo® is a direct replacement for the current version "EBS" OEM seals, featuring two internal rubber shaft sealing points. Older generations have different outside housing diameters and a single internal rubber shaft sealing point, please see the Vulcan Seals Type 1640 Wilo® data sheet.
- The Vulcan Seals Type 1642 Wilo® is available as a complete mechanical seal assembly or in repair kit form. The kits comprise both stationary faces, with 'O'-rings, central rotary with elastomeric diaphragms, anti-rotation pins and springs for the stationaries, and the retaining pins for the collets.

Pump Ranges

The Wilo® pump model includes the following pump ranges: "FA", "FK", "FKT" and "HC" series submersible pumps fitted with EBS® style push-fit seals.

Compliance & Certificates



The Vulcan Seals mechanical seal range can be supplied with material combinations designed to meet the compliance standards and certifications listed above. Additional compliance or regulatory requirements can also be considered upon request. Please enquire to discuss your specific application.

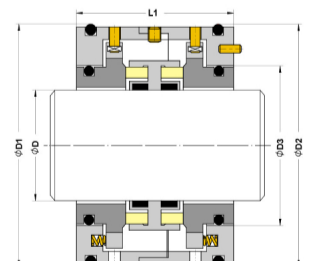
Standard Face Material Combinations

Elastomers	Rotary Face	Stationary Face	Metals	Complete Material Code
Viton™/FKM	VSR1 Silicon Carbide	VSR1 Silicon Carbide	304 Stainless Steel	.V.ZS.
Viton™/FKM	VSR1 Silicon Carbide	VSR1 Silicon Carbide	304 Stainless Steel	.V.ZS.

Dimensional Data

DØ (Metric)	Seal Size Code	D1 (mm)	D2 (mm)	D3 (mm)	L1 (mm)
35.00	0350	72.00	72.00	49.00	47.00
50.00	0500	92.00	90.00	65.00	52.00

Dimensions in mm
*Non-stock guarantee



® TM All product names, brands and trademarks shown are property of their respective owners, are for identification purposes only, and do not imply affiliation nor endorsement.
** All dimensional and identification information shown is given in good faith and is based on extensive experience gained in business. Performance data is not provided for this product range based on the Vulcan Seals design being a replacement of, or an improvement on, a design that has originally proved suitable for the equipment and service concerned.