

MOLO COLLECTION

2024

LINEA

TERRA

FORMA

LUMINE

ORRIZONTE

# MOLO

**Timeless interior solutions for contemporary spaces**

MADE IN SACILE, FRIULI VENEZIA GIULIA

ITALY

MOLO stands for the rich legacy of Italian design, continually evolving to shape the future of interior spaces.

At MOLO, we craft interior solutions that merge form and function in perfect harmony. Specializing in customizable door systems and modular shelving, we offer minimalist designs that elevate both modern living and commercial spaces.

Our philosophy blends the heritage of Italian craftsmanship with innovative design principles.

Every element is created with adaptability, precision, and timeless elegance in mind, laying the foundation for spaces that are as functional as they are beautiful.

MOLO designs are not only about form but about the environments they shape. Our products infuse spaces with elegance, allowing natural light, clean lines, and refined materials to create an atmosphere of calm and balance.

From the subtle textures of wood to the transparency of glass, every detail enhances the serenity and flow of contemporary interiors.

Each product reflects our commitment to pushing boundaries and embracing modernity.





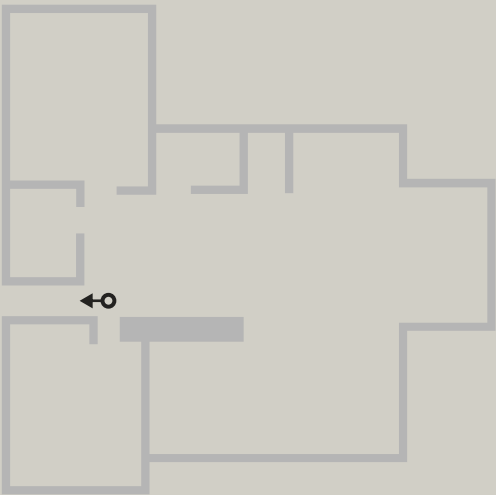


# MOLO House

MOLO House is the embodiment of our design philosophy, where every element reflects the seamless union of tradition and innovation.

This curated space serves as a living showcase for our customizable door systems and modular interiors, allowing visitors to experience firsthand how MOLO products integrate into everyday life.

Each room is thoughtfully designed to highlight the balance of functionality and minimalist elegance, offering inspiration for both contemporary living and commercial environments.

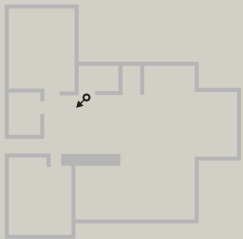








A space where craftsmanship and innovation meet, shaping interiors that inspire balance, beauty, and timeless elegance.



The Collection



LUMINE  
Modular interior system

Lumine offers a multifunctional, modular solution perfect for wardrobes or shelving. Its flexible design and elegant materials create a stylish and organized living space.

Finishes    Black powder coated, dark bronze anodised



TERRA  
Hinged Doors

The Terra hinged door system seamlessly combines functionality with modern design. Its invisible air-type hinges ensure smooth operation while preserving clean, minimalist lines.

Finishes    Dark bronze anodised, black powder coated, black mat anodised brushed, gold mat anodised brushed, champaign mat anodised



ORRIZONTE  
Wall mounted shelving

Orrizzonte features a sleek, bracket-free design that appears to float on the wall, bringing a touch of modern elegance to any room.

Finishes    Dark bronze anodised



FORMA  
Swing Doors

The Forma swing door system is designed with minimalism in mind, featuring a slim profile and refined details that blend effortlessly with any modern interior.

Finishes    Black powder coated, dark bronze anodised

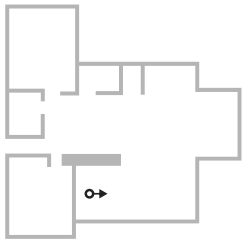


# LINEA

## Sliding Door System

The Linea Sliding Door System offers a top-hanged solution that blends minimalist design with high functionality. Its robust 12mm aluminum frame creates sleek, clean lines that complement contemporary spaces, all while eliminating the need for floor-mounted components. This design choice preserves the integrity of flooring, making it ideal for parquet, tiles, and carpeted areas.

Finishes    Dark bronze anodised, black powder coated,  
                  black mat anodised brushed, gold mat  
                  anodised brushed, champaign mat anodised



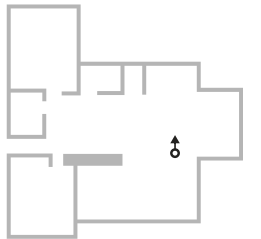


Linea enhances spaces by creating a sense of calm and balance. Its quiet glide and slim, nearly invisible frame contribute to a serene environment where functionality and elegance coexist.





Linea is available in several variants, including bottom sliding, top-hanged telescopic, synchro, and fixed partition units.



The system comes in dark brown, black, and champagne profiles with glass options in transparent white, brown, and graphite, enabling tailored installations for any project.





Its delicate frame and quiet glide make it almost invisible. This design approach ensures that Linea enhances the overall ambiance without overpowering the room.



The hardwood handle is integrated into the design, offering an industrial yet minimalist look that complements modern interiors.



The minimalist lock is embedded into the frame, ensuring security without disrupting the clean lines.

“La vera eleganza sta nella semplicità.”

Valentino Garavani



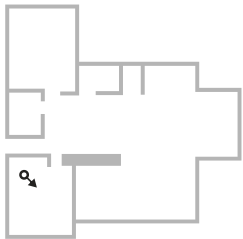


# TERRA

## Hinged Door System

A modern hinged door system with invisible air-type hinges, Terra eliminates visible hardware, preserving a sleek and minimalist aesthetic. Its innovative hinge system allows doors up to 3 meters in height and 0.6 meters in width, offering flexibility for a range of applications.

Finishes    Dark bronze anodised, black powder coated,  
                 black mat anodised brushed, gold mat  
                 anodised brushed, champaign mat anodised



Terra flexibility enables architects and designers to incorporate statement doors that blend into the overall design.



The absence of traditional box hinges allows the door to integrate seamlessly into the surrounding architecture, contributing to a sleek, unified look.



The precision of the hinge design ensures a door movement that is both effortless and reliable, enhancing the user experience.



The system's invisible air hinges allow for larger door panels while maintaining structural integrity and smooth functionality.



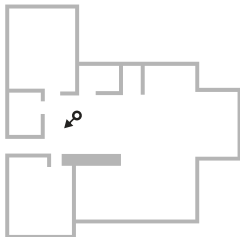
The integrated handle runs vertically along the frame, adding to the minimalist design while offering practicality and ease of use.

# FORMA

## Swing Door System

Forma is a sleek, minimalist swing door system designed to fit seamlessly into modern interiors. Its slim profile and refined design ensure a smooth, unobtrusive transition between rooms, while maintaining a sophisticated appearance.

Finishes    Black powder coated, dark bronze anodised





The system creates an atmosphere of quiet elegance with its nearly invisible frame and minimalist design, making it a perfect complement to contemporary spaces where simplicity and functionality are key.



This versatile door system can be used in a variety of settings, from room-to-room transitions to bathroom entrances or office doors with locking options.



The integrated lock system offers both functionality and a seamless design, maintaining the sleek, modern aesthetic.



The system is designed to accommodate various materials for the door panel, including glass, veneer, and chipboard, giving users flexibility in design.



“La forma segue la funzione, ma deve essere bella.”

Achille Castiglioni



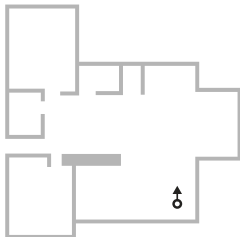


# LUMINE

## Modular Interior System

Lumine is a multifunctional, modular interior system designed for versatility in modern living spaces. Whether used for wardrobes, walk-in closets, or decorative shelving in living rooms, Lumine offers endless configuration possibilities to suit any need. Its flexible design ensures easy customization and seamless integration into various environments.

Finishes    Black powder coated, dark bronze anodised





This system helps create a sense of organization and sophistication in any space. With its adjustable shelving and modular setup, it enhances the flow and balance of interiors, adding both practicality and aesthetic appeal.



Lumine adapts to different functional and aesthetic needs. Optional integrated LED lighting further elevates the atmosphere, providing both illumination and elegance.



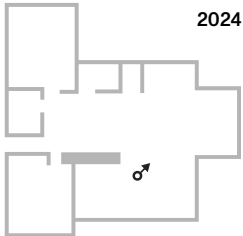
The system also supports pre-assembly, reducing installation time and ensuring a hassle-free setup.



Equipped with adjustable feet to accommodate uneven floors and ceilings, Lumine guarantees a stable, precise fit in any room.



This modular system is ideal for those seeking flexibility.



Available in a range of materials, including chipboard and glass for shelving, Lumine adapts to different functional and aesthetic needs. Optional integrated LED lighting further elevates the atmosphere, providing both illumination and elegance.



It is available in a variety of configurations, from wardrobes and walk-in closets to living room organizers, making it a perfect fit for residential and commercial spaces alike.



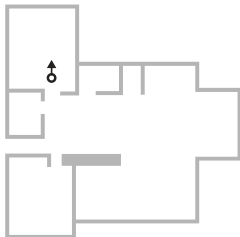


# ORRIZONTE

## Wall-Mounted Shelving System

The Orrizzonte wall-mounted shelving system combines minimalist design with practical functionality. Its unique feature is the hidden mounting system, which makes the shelves appear as if they are floating, creating a sleek, modern look without visible brackets or supports.

Finishes    Dark bronze anodised





The shelving system is versatile and can be used in walk-in closets, living rooms, galleries, or shops.





The “floating” effect of the shelves adds a sense of weightlessness and sophistication to any room, enhancing both function and form in residential or commercial spaces.

Orrizzonte offers a variety of material and color combinations, with shelves available in various finishes to match the space. The back panel can be customized with chipboard, glass, leather, or stone, making the system adaptable to personal taste and interior requirements.









# MOLO

MOLOHOUSE.COM

