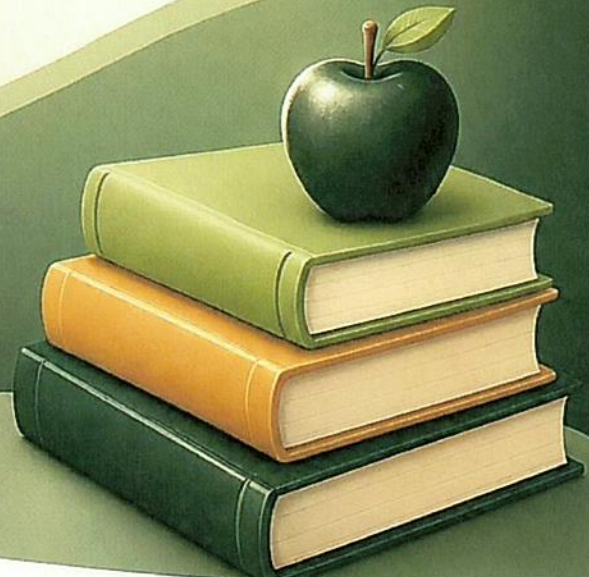
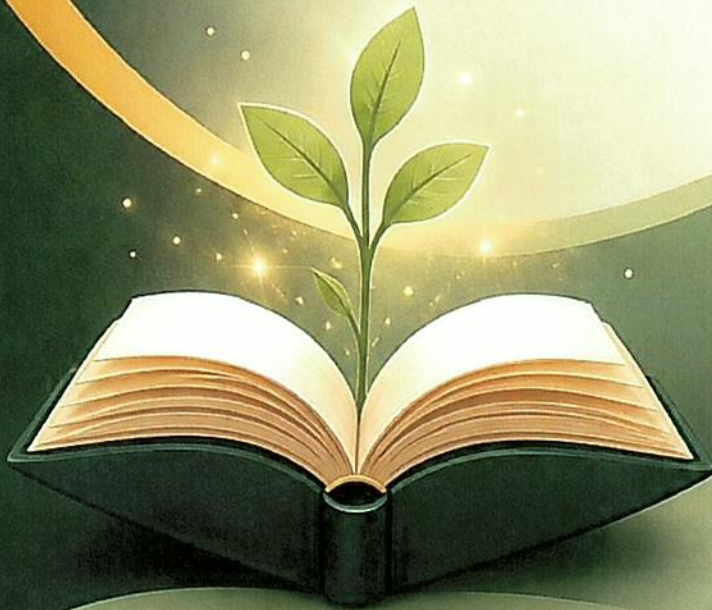




# QSHS

*Serves*  
— AND —  
*Supports*

LIKE SEEDS WHAT YOU **NUTURE** WILL GROW ♥



STRONG SCHOOLS



STRONG FAMILIES



STRONG COMMUNITIES



STRONGER TOGETHER





# QSHS *Serves* — AND — *Supports*



LIKE SEEDS WHAT YOU **NUTURE** WILL GROW 

## A Message from the Superintendent



Dear Queens South High School Families and Students,

At Queens South High Schools, we believe that every student deserves to be seen, supported, and empowered to thrive. While academic excellence remains at the heart of our work, we also recognize that students are most successful when their social, emotional, and wellness needs are met.

It is with that commitment in mind that we present the Queens South High Schools Services & Supports Directory. This resource was created to ensure that our students and families are aware of the many programs, services, and supports available within our schools. From mental health services and counseling supports to food pantry resources, after-school opportunities, and specialized programs, this directory is designed to make access to support clear, transparent, and readily available.

This directory was developed in response to feedback from our families and students. We heard your desire for greater awareness of the resources that exist within our schools and how to access them. Our goal is not simply to provide supports, but to ensure that every family knows where those supports are, how to access them, and who can help connect them to the services they need.

As a district, we are committed to creating schools where every student feels safe, valued, connected, and prepared for success. We hope this directory serves as a meaningful tool that strengthens the partnership between our schools, families, and community as we work together to support the whole child.

Thank you for your continued partnership and for entrusting us with the education, well-being, and future of your children.

With gratitude,

*Dr. Josephine Van-Ess*

Superintendent


Queens South High Schools

*"Like Seeds, Nurture Them and They Will Grow."*



**Dr. Josephine Yeboah Van-Ess**  
Superintendent of Queens South High Schools

 82-01 Rockaway Blvd  
Ozone Park, NY 11416

 Email: [Jvaness@schools.nyc.gov](mailto:Jvaness@schools.nyc.gov)





## QUEENS SOUTH HIGH SCHOOLS

### SERVES & SUPPORTS EPIC High School North

#### SCHOOL INFORMATION

EPIC High School North  
Principal: Kristen Breen  
94-25 117th Street, South Richmond Hill, NY  
718-570-8230  
[www.epichighschoolnorth.org](http://www.epichighschoolnorth.org)

#### SCHOOL OVERVIEW

Focuses on social-emotional learning to build the habits of mind—resilience, self-awareness, and confidence—that support academic success, positive decision-making, and lifelong growth for all students. Through a supportive and inclusive environment, students are encouraged to develop strong relationships, effective communication skills, leadership abilities, and a sense of belonging that empowers them to thrive both inside and outside of the classroom.

#### KEY CONTACTS

Name	Title	Email	Phone Extension
Kristen Breen	Principal	<a href="mailto:KBreen@schools.nyc.gov">KBreen@schools.nyc.gov</a>	1017
Meghan Hausdorf	Assistant Principal	<a href="mailto:MHausdorf@schools.nyc.gov">MHausdorf@schools.nyc.gov</a>	8882
Hema Persaud	Assistant Principal	<a href="mailto:HPersaud4@schools.nyc.gov">HPersaud4@schools.nyc.gov</a>	3021
Nina Roberto	Parent Coordinator	<a href="mailto:NRoberto@schools.nyc.gov">NRoberto@schools.nyc.gov</a>	1014
Bilquees Akhtar	School Secretary	<a href="mailto:BAkhtar@schools.nyc.gov">BAkhtar@schools.nyc.gov</a>	1012

#### MENTAL HEALTH SUPPORTS

- Counseling referrals
- Food & housing resources
- Yoga
- Meditation
- Peer mediation
- Mentorship programs
- Advisory structure

Our school is committed to supporting the social-emotional well-being and mental health needs of all students through a comprehensive network of supportive resources. Through these programs and services, students are provided with opportunities to receive individualized support, build coping skills, strengthen peer relationships, and develop emotional resilience. These supports help foster a safe and nurturing environment where students feel cared for, connected, and empowered to succeed academically, socially, and emotionally.

## **LEADERSHIP EMPOWERMENT CORNERS**

- GSA
- MSK
- MBK
- PSAL Sports and All-Access Sports
- Restorative Practices
- Bhangra Dance
- Cheer Squad
- Girls Inc.
- Petite Panther Protection Project
- Student Council Across All Grades
- EPIC Voice Podcast
- Gaming Club

The school is committed to creating safe, inclusive, and empowering spaces where students feel supported, respected, and connected to their school community. Through these programs and initiatives, students are provided with opportunities to express themselves, develop leadership skills, build positive relationships, and celebrate diverse identities and cultures. These affinity spaces and student-centered programs promote belonging, student voice, social-emotional well-being, and community-building while encouraging students to engage meaningfully both within and beyond the classroom.

## **ACADEMIC ENRICHMENT PROGRAMS**

- Public School Athletic League
- EPIC University
- College Now
- Learn & Earn
- Tech School (AI & Design)
- Student Clubs
- Internships
- College Tours
- Toolkit Tutors (School sponsored private tutoring)
- Weekly Office Hours and Recitation
- Summer College for High School Students Scholarship Opportunities

These programs provide students with opportunities to explore their interests, strengthen academic and career readiness skills, and engage in meaningful learning experiences beyond the classroom. Through athletics, technology and design pathways, college coursework, internships, and enrichment opportunities, students are empowered to develop leadership skills, collaborate with peers, build real-world experience, and prepare for success in college, careers, and future endeavors.

## **FAMILY ENGAGEMENT EVENTS**

Our school is dedicated to strong family partnerships, providing ongoing communication and support through:

- PTA/SLT workshops
- Student-led conferences
- College advising and planning
- Financial aid support
- Family events

Our school is committed to building strong partnerships with families through ongoing communication, collaboration, and meaningful engagement opportunities. Through PTA/SLT participation, workshops, student-led conferences, college planning support, financial aid assistance, and family-centered events, families are provided with valuable resources and opportunities to remain actively involved in their child's educational journey. These initiatives promote open dialogue, strengthen the home-school connection, and support families in navigating academic and postsecondary planning. Our school continues to foster a welcoming and inclusive environment where families feel informed, supported, and empowered as essential partners in student success.

### COMMUNITY PARTNERS

- Queens Community House (Contact: Tonya Shiwratt - TShiwratt@qchnyc.org): Provides Learn & Earn Wrap-Around Services, including college advisement, paid internships, and youth services
- NYLAG (New York Legal Assistance Group): Offers free or low-cost legal services to students and families
- Housing Connect: A resource for navigating housing applications and securing stable housing
- City Harvest: A food resource partner that provides food assistance and addresses food insecurity
- Boys & Girls Club: Offers youth services, including work-based learning, paid internships, and student enrichment programs
- PAL (Police Athletic League): Provides youth development and recreation programs for youth
- MOI: Mayor's Office for Immigration: Provides support and resources for immigrant and newly arrived families
- The Door: Offers holistic resources including medical care, academic instruction, clinical counseling, emergency intervention, legal aid, college and high school equivalency readiness, vocational growth, and housing assistance
- Safe Horizon: A service provider that supports individuals and families impacted by crime and abuse
- Child Center of New York: Offers comprehensive social and mental health services focused on the well-being of children and families
- Sheltering Arms: Provides resources and support for vulnerable children, youth, and families
- Mobile Crisis Unit: Offers immediate, in-person mental health services for crisis intervention

For direct assistance and referrals to the community partnerships listed, families should contact EPIC High School North's main office directly.

### STUDENT SUPPORTS

**Overview:** Students are provided ancillary academic support in order to fulfill needs per IEP and English Language mastery. Students are cooperatively assigned a case manager through their journeys at EPIC High School North to ensure consistent provision of services.

**SWD:** AP Meghan Hausdorf: MHausdorf@schools.nyc.gov

**ELL:** AP Hema Persaud: HPersaud4@schools.nyc.gov

**STH:** AP Meghan Hausdorf: MHausdorf@schools.nyc.gov

**CBO Partner In-House Program Director:** Tonya Schirwat: TShiwratt@qchnyc.org

**STH Liaison:** Niecesha Surita: NSurita2@schools.nyc.gov