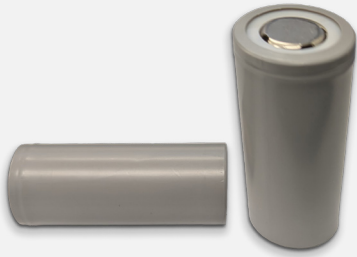


LFP26650P-3000



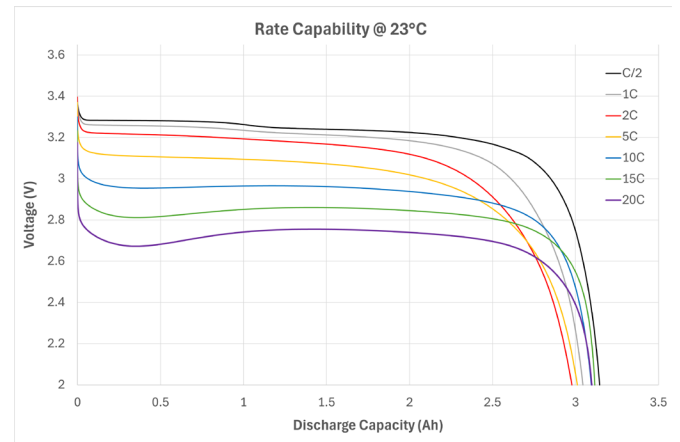
The LFP26650P-3000 cell is based on inherently safe lithium iron phosphate chemistry which enables simultaneous high power and high energy while exhibiting proven safety, excellent float, storage, and cycle life.

Specifications

Nominal Ratings	
Voltage	3.2 V
Capacity @ 25 °C (Min)	3.0 Ah
Energy @ 25 °C	9.6 Wh
Specific Energy	> 113 Wh/kg
Energy Density	273 Wh/L
Impedance (1kHz ACIR)	< 8 mΩ
Cycle Life	> 3500 Cycles
Discharging	
Max Continuous Discharge Current	60 A at > 2.60 V
Minimum Voltage	2.5 V
Temperature	-20 to 60 °C
Charging	
Recommended Charge Voltage	3.65 V
Recommended Charge Current	3.0 A
Max Continuous Current (>10 °C)	15.0 A
Terminate Charge @ 3.65 V	< 0.05 A
Temperature	0 to 45 °C
Storage	
Temperature	-40 to 70 °C
Certifications	

Transportation shipped @ ≤ 30% SOC UN 38.3

Cell Data



Dimensions

Weight: 84.65 g +/- 0.5 g

