



## Resists outside moisture, releases inside moisture

Our Specialty UDL Breathable premium-quality steep-slope synthetic roofing underlayment delivers all the qualities of a premium underlayment with a breathable design. That means durability and slip resistance, while also allowing household moisture to escape.



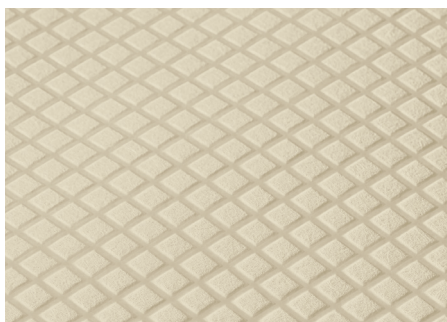
**Get the job covered™**



# Specialty UDL Breathable

## Product features:

- Breathable surface allows moisture to escape, which may help reduce the potential for moisture-related damage
- Durable construction resists stretching and tearing
- 180-day UV resistance<sup>1</sup>
- Resists shrinking and slip-resistant backing helps it lay flat and stay put
- GripSpot™ walking surface for excellent traction
- Compatible under metal; cement tiles; clay tiles; slate; and wood, asphalt, and synthetic shingles



GripSpot™ technology provides an embossed surface and smooth channels to shed water, promoting dry, walkable working areas.

## Performance and breathability

Our Specialty UDL Breathable underlayment offers the same level of protection while it "out-breathes" our synthetic underlayments.

## Product details<sup>2</sup>:

### 5-square roll:

- **Area:** 500 ft.<sup>2</sup> (46.45 sq. m)
- **Width:** 48" (1.22 m)
- **Length:** 125' (38.1 m)

- **Surface:** Slip-resistant GripSpot™

### Code Approvals & Standards:

Meets or exceeds the physical requirements of ASTM D226, Type II and ASTM D4869, Type IV



UV  
Resistance<sup>1</sup>



Lifetime Limited  
Warranty<sup>3</sup>



Breathable



Visit us at [ftsolutionsroof.com](https://ftsolutionsroof.com)

For questions, call **877-423-7663**

<sup>1</sup> 180-day UV resistance for Premier UDL 180 is based on testing conducted under controlled laboratory conditions. This product is water resistant, NOT WATERPROOF. DO NOT USE as a temporary roof to protect property or possessions.

<sup>2</sup> Values stated are approximate and subject to normal manufacturing variation. These values are not guaranteed and are provided solely as a guide.

<sup>3</sup> Lifetime refers to the length of warranty coverage provided and means as long as the original individual owner(s) of a single-family detached residence owns the property where the qualifying product is installed. For other owners/structures, Lifetime coverage is not applicable. See *FT Solutions™ Limited Warranty* available at [ftsolutionsroof.com](https://ftsolutionsroof.com) for complete coverage and restrictions.