

Joint Stewardship Board 2024 Review



HAUDENOSAUNEE
CONFEDERACY



Hamilton

Joint Stewardship
Board



Respect · Trust · Friendship



Current Board Members

HDI

Raechelle Williams

Todd Williams

Aaron Detlor

Meagan Hamilton (Coordinator)

City of Hamilton

Councillor Tammy Hwang

Councillor (TBA)

Councillor (TBA)



JSB Board Relationship Challenges in 2024

- **2 Meetings** (May 23 in Ohsweken and September 23 in Hamilton)
- Difficulties **Scheduling** Meetings with Hamilton City Councillors
- The City referred us to work with **Healthy & Safe Communities**
- Hiring of the **new Mayor Andrea Horwath**
- Hamilton **Cyber Attack**
- City Solicitor **Larry Tansley Statement**
- 2 City of Hamilton Councillors **Resigned** from the Board

Review of JSB Activities 2024



JSB Meetings in 2024

- 2 occurred in 2024
- Both in-person
- 1 at 392 Oneida Rd.
- 1 in Hamilton
- 1 virtual before year end



Red Hill Valley

- No funding secured for Interpretive Centre
- Updated Design & Tender documents
- Geotechnical Work in Early December
- Signage & Meeting Place Assessment
- Updated Map of RHV Project Area

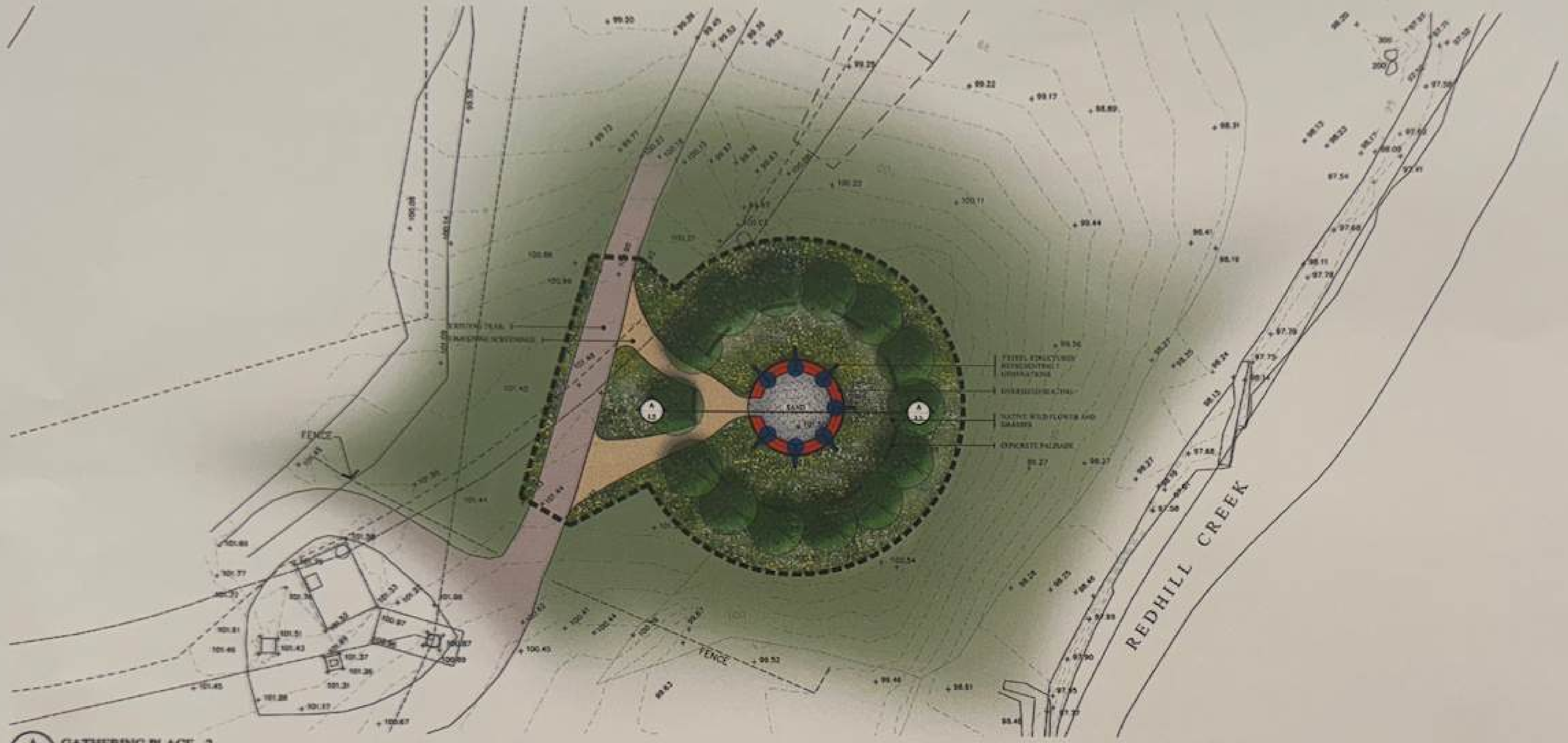
JSB Guide to Haudenosaunee Consultation for Environmental Assessments in the Red Hill Valley, Hamilton, Ontario



Other Initiatives

- New JSB Website
- Digitizing All Past Files
- Guide to Haudenosaunee Consultation for Environmental Assessments in the Red Hill Valley

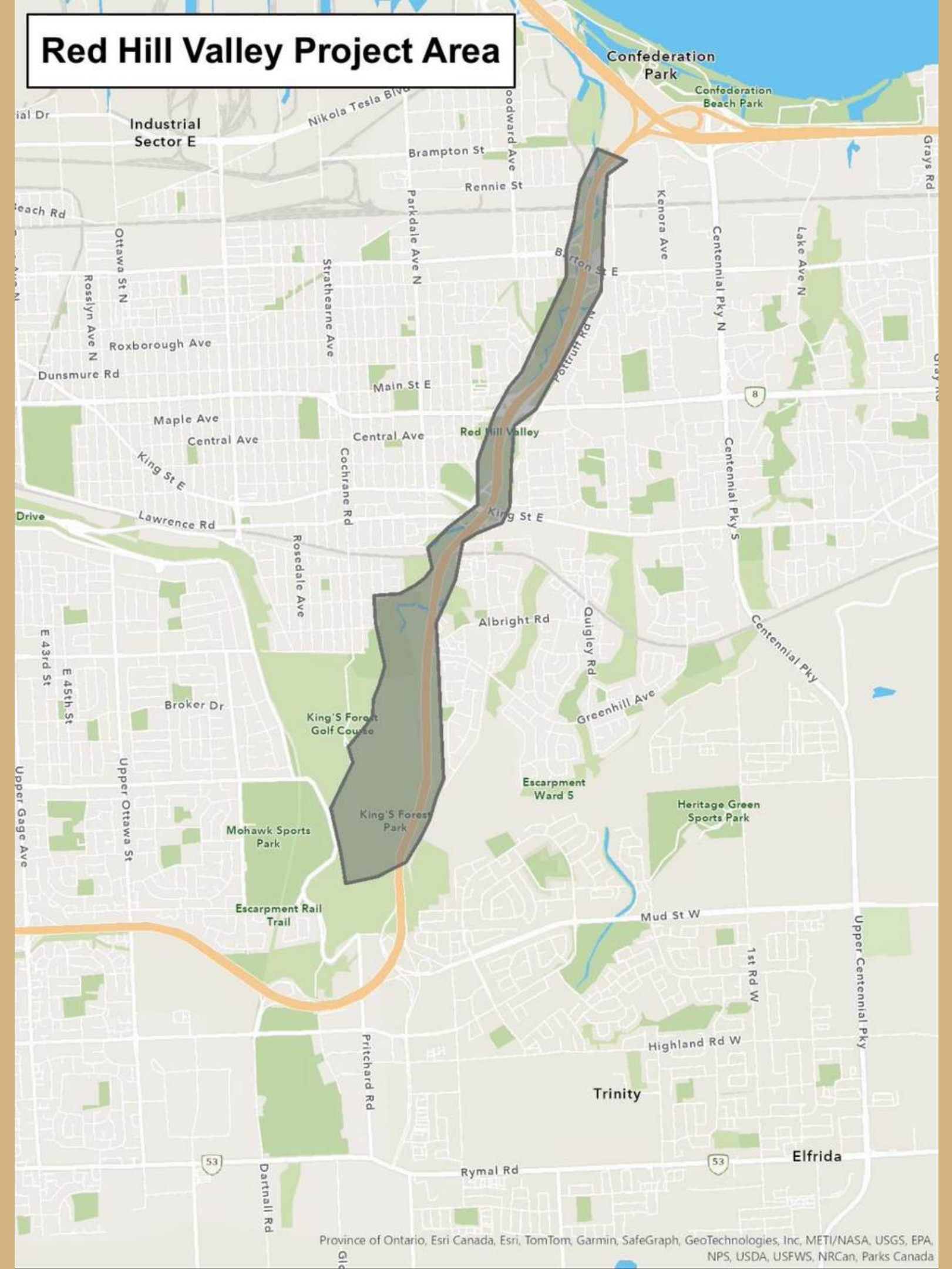
Nest Meeting Place



Appendix A:
Red Hill Valley Project Area



Red Hill Valley Project Area





THE BEAR MEETING PLACE



To both the Haudenosaunee ('People of the Longhouse') and the Anishinabek ('Original People') people who travelled through this valley, the black bear is a symbol of strength and power, associated with spiritual medicine.

The Seneca Nation has a story of a giant bear called Nia'gwahe or okwari in Mohawk that once roamed these lands. Seldom seen, the bear always left his big footprints on the landscape.

There is another story of a great celestial bear that is pursued across the skies by hunters. When you see the Big Dipper overhead, the Seneca say that the four stars in the dipper represent the four legs of that bear, and the three stars in the handle are the pursuing hunters.



Illustration by Haudenosaunee artist, Arnold Jacobs



This location along with planned Turtle, Nest, and Eel Meeting Places are sites along the trail designed for sharing and learning; where visitors can stop to rest and experience the beauty of the valley landscape.



Bear Meeting Place design by Kenneth J. Hoyle



Photo credit: Jennifer Compton-MacLean

Imagine that you are in an old hunting party and have come across this giant footprint. It is time to pause, reflect, and share your stories, or simply enjoy the view. While the bear has left his footprint, we have to be more careful about what we leave behind, so please remember to keep this place clean.



This landscape feature is brought to you by the Red Hill Valley Joint Stewardship Board - a commitment to environmental guardianship between the City of Hamilton and the Haudenosaunee Confederacy Chiefs Council. www.jointstewardshipboard.com





RED HILL VALLEY TRAIL

DYLAN LIKE 3/10/21

EXPLORE · ENJOY · DISCOVER

The Red Hill Valley is a significant natural open space that spans Hamilton's landscape from the Niagara Escarpment to Lake Ontario. Home to rare species such as the Coopers Hawk, Soapberry Tree, and Southern Flying Squirrel, the Valley is an important natural habitat for diverse species of animals and plants. Its archaeological artifacts are twice as old as Stonehenge and the Egyptian pyramids, dating back 11,000 years.

Learn more at hamilton.ca/rhvp or jointstewardshipboard.com

MEETING PLACES



Take only photos. Leave only footprints. Please stay on the trail.



1 KM

LEGEND

MEETING PLACES

ENTRY POINTS

RED HILL VALLEY TRAIL

CHALLENGING TRAIL SEGMENTS

EAST MOUNTAIN TRAIL LOOP

ESCAPMENT RAIL TRAIL

WATERFRONT TRAIL

TRANS CANADA TRAIL

BRUCE TRAIL

PARKING

RED HILL CREEK

NIAGARA ESCARPMENT



FLOOD ALERT

Be aware that water levels in the valley can rise unexpectedly. As you explore the valley, use care and remain aware of your surroundings. Be prepared to seek higher ground.

TAKE CARE

Red Hill Valley is a multi-use, recreational trail. Walkers and cyclists share the trail. Some sections may pose physical challenges. The trail is not maintained during the winter.

To report hazards or concerns, call 905-546-2489.

IN EMERGENCIES CALL 911

RED HILL VALLEY

DYLAN LIKE 3/10/21

EXPLORE · ENJOY · DISCOVER

The Red Hill Valley is a significant natural open space that spans Hamilton's landscape from the Niagara Escarpment to Lake Ontario. Home to rare species such as the Coopers Hawk, Soapberry Tree, and Southern Flying Squirrel, the Valley is an important natural habitat for diverse species of animals and plants. Its archaeological artifacts are twice as old as Stonehenge and the Egyptian pyramids, dating back 11,000 years.

Learn more at hamilton.ca/rhvp or jointstewardshipboard.com

MEETING PLACES



Take only photos. Leave only footprints. Please stay on the trail.



1 KM

LEGEND

MEETING PLACES

ENTRY POINTS

RED HILL VALLEY TRAIL

CHALLENGING TRAIL SEGMENTS

EAST MOUNTAIN TRAIL LOOP

ESCAPMENT RAIL TRAIL

WATERFRONT TRAIL

TRANS CANADA TRAIL

BRUCE TRAIL

PARKING

RED HILL CREEK

NIAGARA ESCARPMENT

YOU ARE HERE

YOU ARE HERE

YOU ARE HERE

YOU ARE HERE

YOU ARE HERE

YOU ARE HERE

YOU ARE HERE

YOU ARE HERE

YOU ARE HERE

YOU ARE HERE

YOU ARE HERE

YOU ARE HERE

YOU ARE HERE

YOU ARE HERE

YOU ARE HERE

YOU ARE HERE

YOU ARE HERE

YOU ARE HERE

YOU ARE HERE

YOU ARE HERE

YOU ARE HERE

YOU ARE HERE

YOU ARE HERE

YOU ARE HERE

YOU ARE HERE

YOU ARE HERE

YOU ARE HERE

YOU ARE HERE

YOU ARE HERE

YOU ARE HERE

YOU ARE HERE

YOU ARE HERE

YOU ARE HERE

YOU ARE HERE

YOU ARE HERE

YOU ARE HERE

YOU ARE HERE

YOU ARE HERE

YOU ARE HERE

YOU ARE HERE

Red Hill Valley Environmental Interpretive Centre

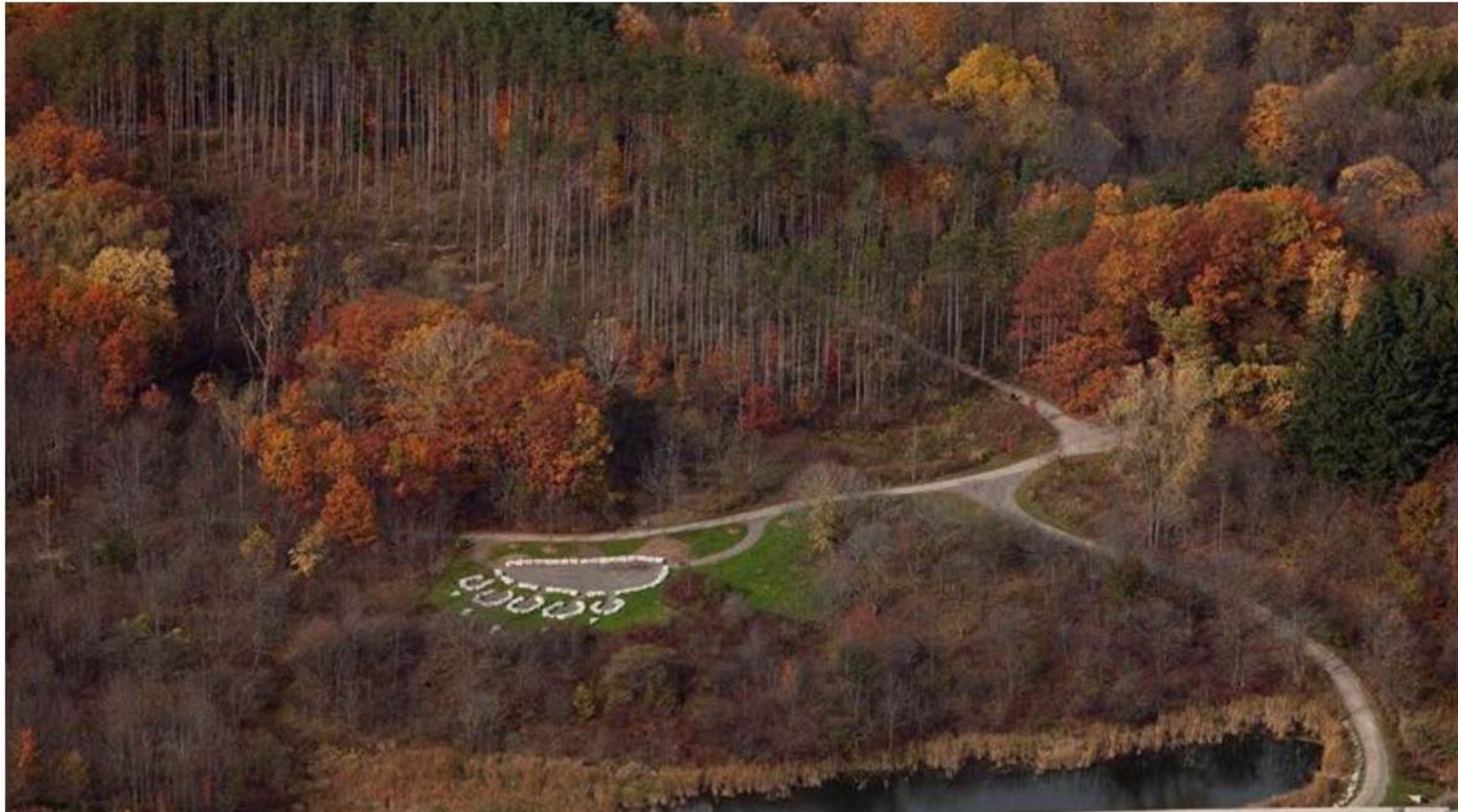


Red Hill Valley Environmental Interpretive Centre

<https://www.youtube.com/watch?v=J22Vd-WAPvk&t=5s>



JSB Guide to Haudenosaunee Consultation for Environmental Assessments in the Red Hill Valley, Hamilton, Ontario





WORKING TOGETHER FOR THE FUTURE.

FIND OUT MORE





**Please share your ideas for
future Joint Stewardship Board
Activities...**