

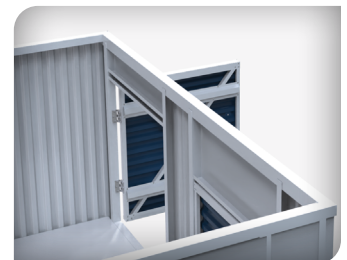
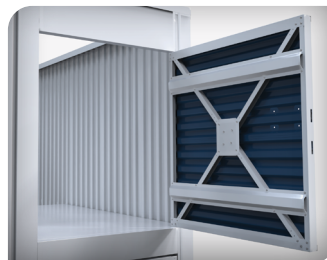
# Swing & Locker Door

## Perfect for Small Spaces

SteelBlue's swing and locker doors are an excellent option for smaller spaces in a facility. A swing door has hinges that allow the door to swing outward.

## Available in a Flush Profile

You can also get swing and locker doors in a flush profile, and they are typically used for mechanical rooms or storage closets for facility owners that allow the door to swing outward.





## Corrugated

### Features:

Match current door profile, factory installed 4-bolt latch of your choice, interior use only; ADA compliant, (2) or (3) Chrome Plated hinges (dependent on size), frame and securewall hall partition fills a 5' - wide unit

### Measurements:

Width: 1'8" min.; 3'2" max  
Height: 20.75" min.; 7'4" max

## Flush

### Features:

Seamless flush design, channel style stiffeners, interior use only; ADA compliant, (2) or (3) chrome plated hinges (dependent on size)

### Gauges:

20 - gauge flat sheet for door face

### Measurements:

Width: 2'6" min.; 3'6" max  
Height: 2' min.; 7'4" max

## Locker Units

### Features:

Seamless flush design, channel style stiffeners, interior use only; ADA compliant, (2) or (3) chrome plated hinges (dependent on size)

### Gauges:

20 - gauge corrugated doors  
20 - gauge Galvalume(R) support angles

### Measurements:

For smaller 5'x5' units in both double and triple stack configurations

## Color Options

Available in 24 colors\*

Siliconized Polyester WeatherXL paint over prime coat

Color options subject to availability and varying lead times