

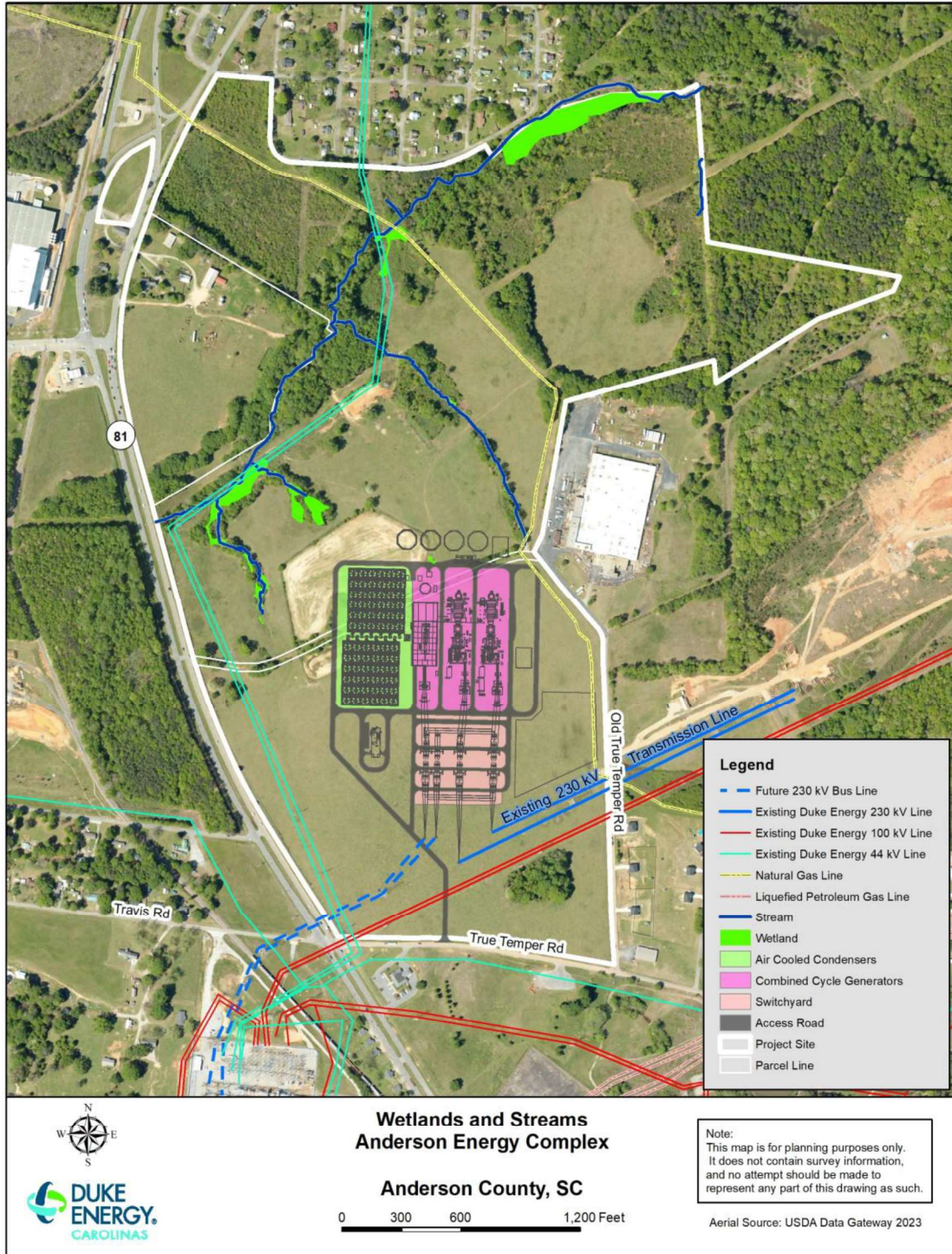
**EXHIBIT B**

**Page 68 of 87**

**Duke Energy Carolinas, LLC  
Environmental Report**

**Anderson County Energy Center**

**Figure 3.7.4: Streams and Wetlands**





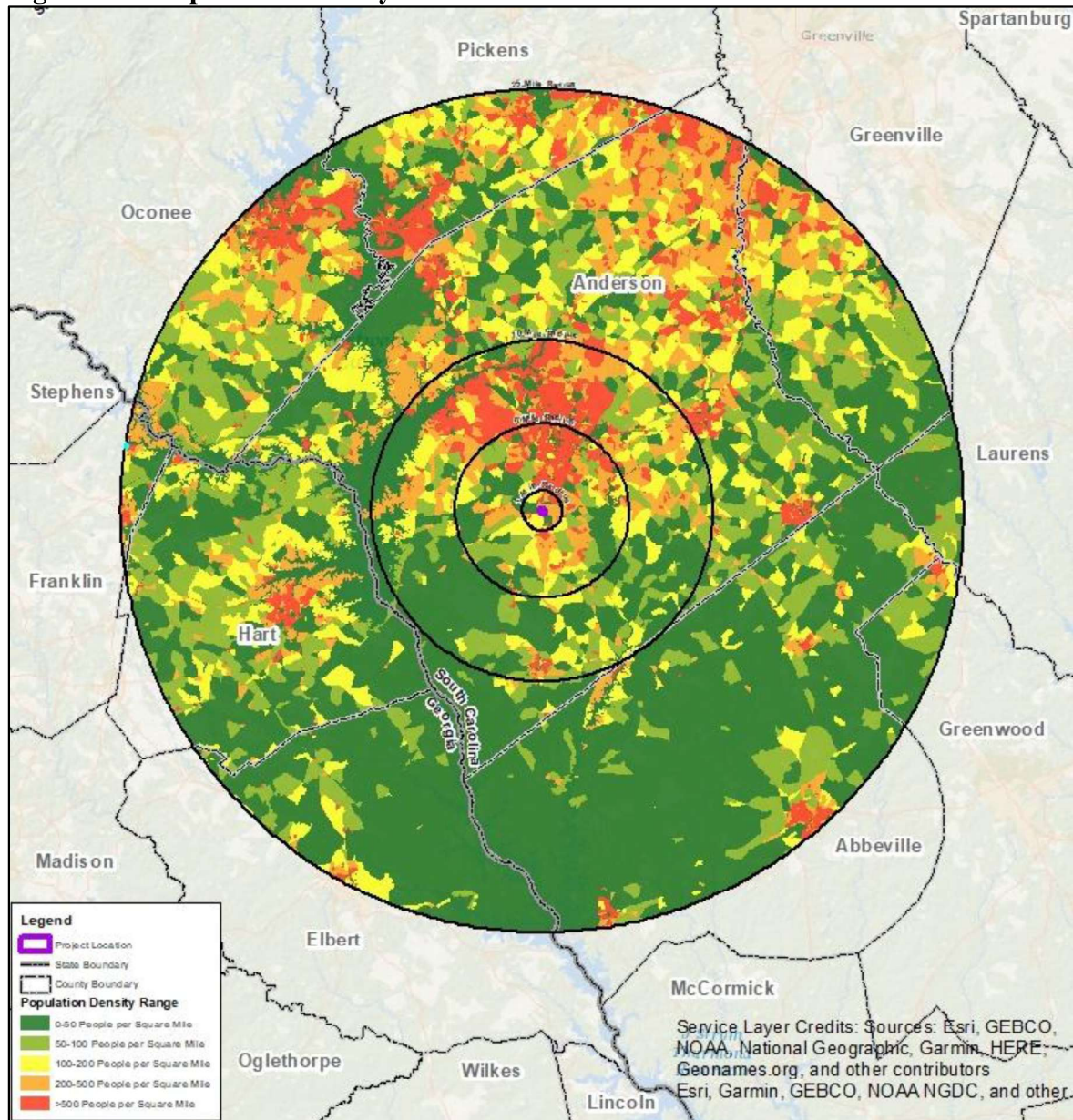
**EXHIBIT B**

Page 17 of 87

Duke Energy Carolinas, LLC  
Environmental Report

Anderson County Energy Center

**Figure 3.1: Population Density**



### 3.2 Land Use/Area Development

Pike researched existing area development through intensive field reconnaissance and desktop mapping (using current aerial photography along with county tax parcel and other digital data). To ascertain future development plans in the vicinity of the Proposed Facilities, Pike researched area land planning documents and online mapping.



**EXHIBIT B**

**Page 9 of 87**

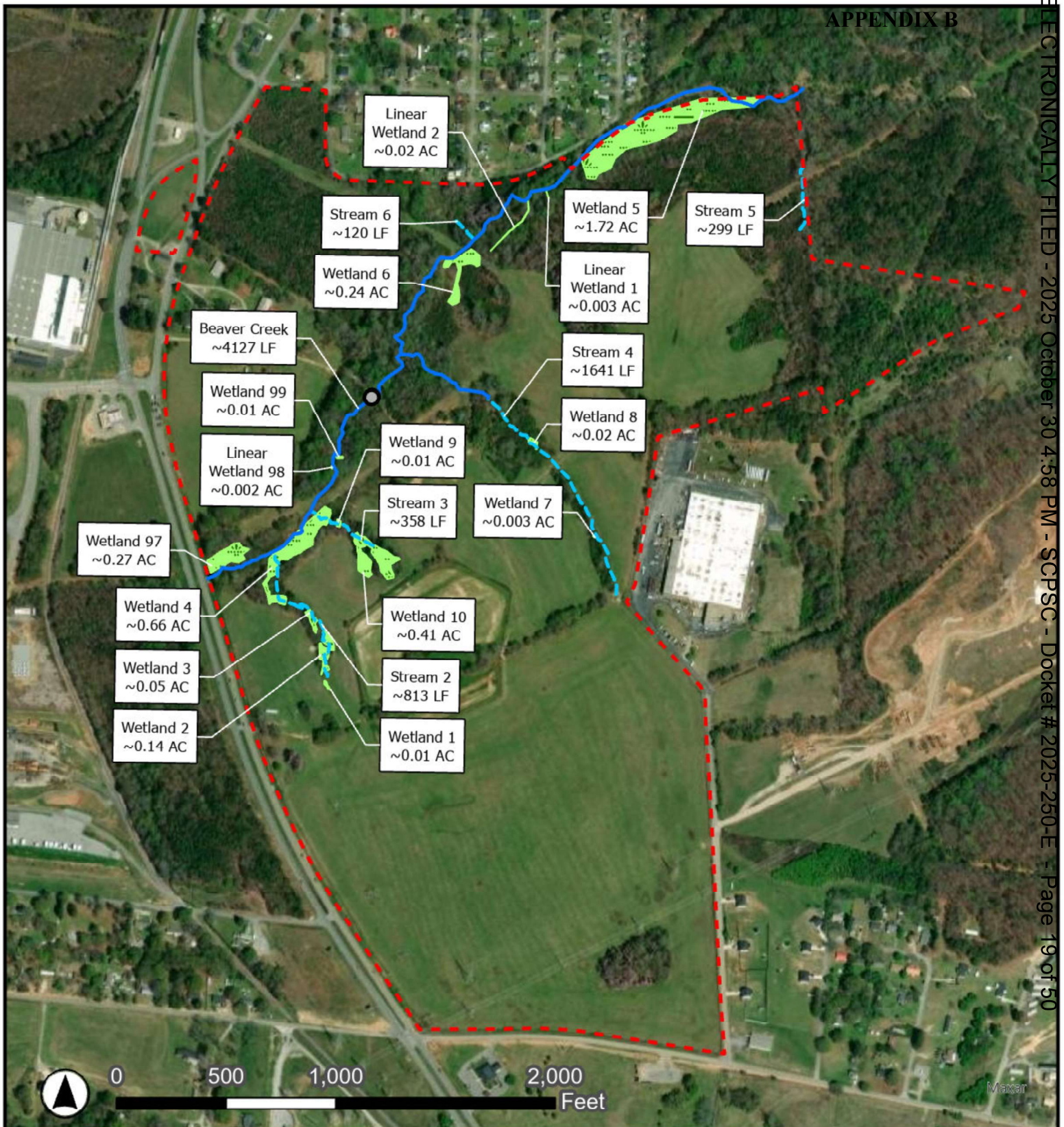
**Duke Energy Carolinas, LLC  
Environmental Report**

**Anderson County Energy Center**

**Figure 1.2-2: Land Use**







### Figure 5. Delineation of Wetlands and Waters

Natural Resource Assessment and Aquatic Resources Delineation

#### Legend

- Project Study Area
- Wetland
- Intermittent Stream
- Perennial Stream
- Culverts



This map is for graphical purposes only and does not represent a legal survey. It is strictly for use with Pike Engineering. Pike assumes no liability, direct or indirect, whatsoever for any such third party or unintended use.

Project Name:  
Anderson County  
Energy Center

Drawn by: W. Walker  
Reviewed By: M. Bollero  
Date: 8/7/2025