

# Silen Space Meet 2

**Collaboration space for allies**

This stylish pod filters out the world, its noise and distractions. Comfortable for two (but fits four for shorter meetings), shared purpose turns into real focus here. Meet, create, and collaborate.



1-4 person



### Timeless design excellence

A precise blend of engineering quality and top-level design expertise. Light, refined, and created to fit naturally into any environment.



### Ultimate two-way privacy

Market-leading noise reduction with certified Class A performance that provides complete acoustic privacy in both directions.



### Comfort perfected

Airflow that exceeds office standards, advanced ventilation and EchoFree Gen 2 acoustics. Ergonomic furniture, preset lighting modes, full personal control.



### Flexibility redefined

A lighter structure, compact modules, fast and easy assembly, easy relocation, and long-lasting durability. Built to adapt as needs change.



### Endless customization

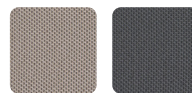
Silen Dynamics allows both interior and exterior finishes to be easily swapped. Furniture is replaceable, accessories can be added later, and pods stay fresh for years.



### Sustainability at the core

Responsible materials, high recyclability, reduced emissions, and a structure designed for more than 20 years of renewability and circular use.

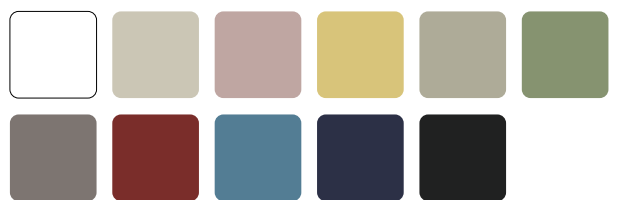
### Interior colors



### Floor



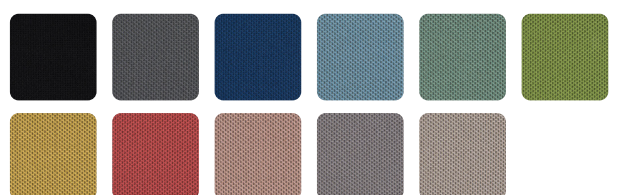
### Exterior colors

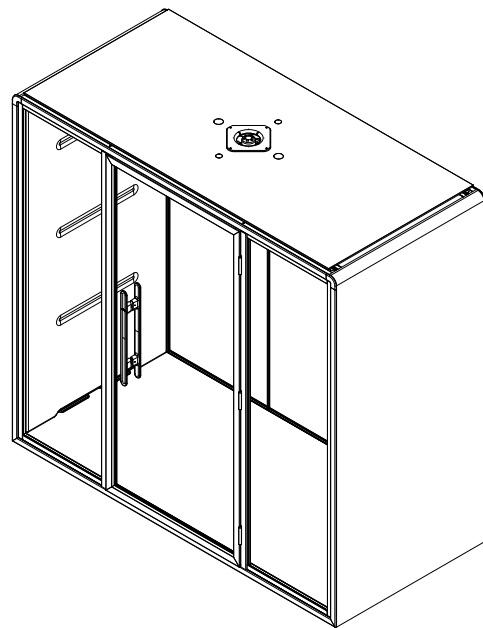
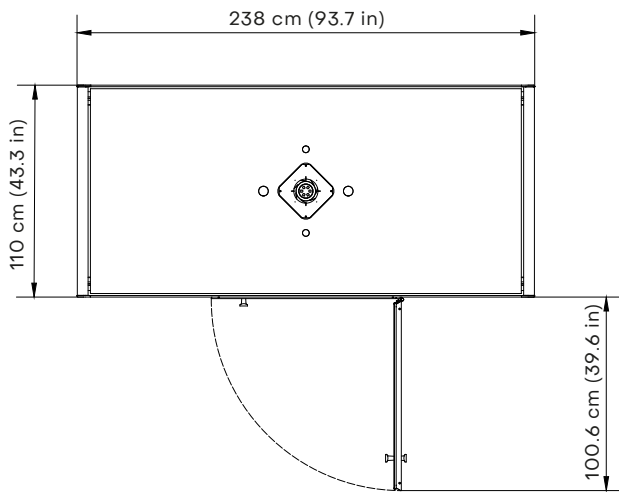
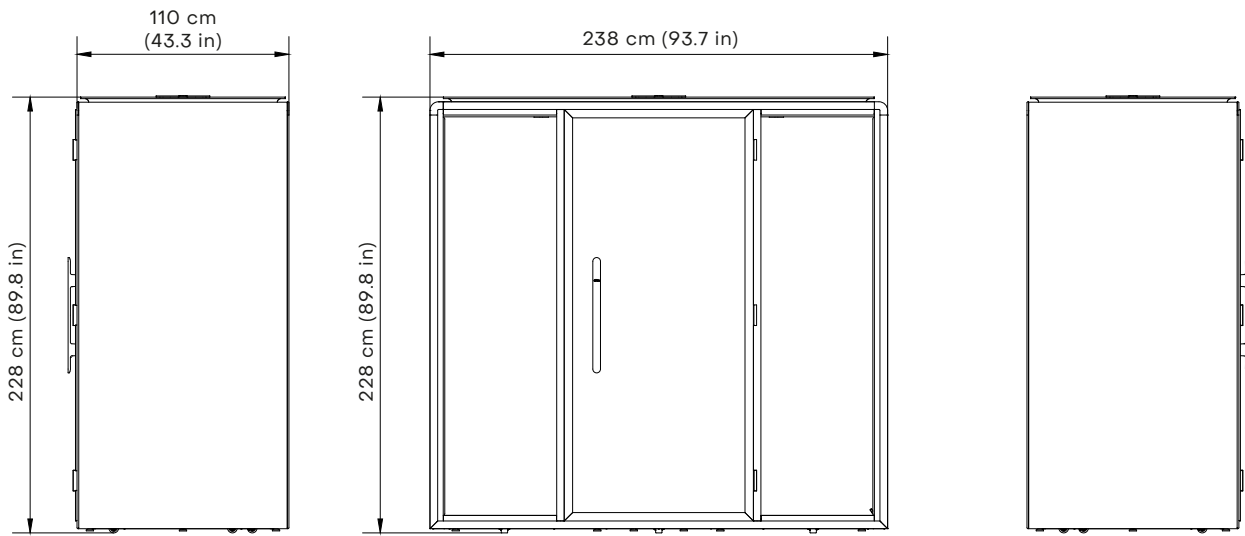


### Veneered exterior colors



### Textile colors for exterior





# Space Meet 2 general product info

## MEASUREMENTS

<b>Exterior size (WxDxH)</b>	238 x 110 x 228 cm / 93.7 x 43.3 x 89.8 in
<b>Interior size (WxDxH)</b>	223 x 105 x 208 cm / 87.8 x 41.3 x 81.9 in
<b>Weight (net)</b>	556 kg / 859.8 lb

## MATERIALS

<b>Exterior</b>	Metal sheet with sand-structured powder coating. Fixed with magnets and easily exchangeable.
<b>Trims</b>	Black powder-coated aluminium
<b>Interior (walls and ceiling)</b>	EchoFree 2.0 non-woven felt panel covered with Camira RePlay Zero textile (flammability Class B, s1, d0)
<b>Floor carpet</b>	Carpet for public spaces, EN 1307. Flammability Bfl-s1
<b>Glass</b>	12mm Sound Control laminated safety glass.
<b>Walls and structure</b>	Sandwich element and structure of aluminium, birch plywood, rubber mat and isolation materials

## TECHNICAL FEATURES

<b>Door handedness</b>	Right- or left-handed door, can be chosen during installation
<b>Adjustable glides</b>	Levelling from inside the booth
<b>Casters</b>	Patented hidden caster system enables smooth installation and effortless relocation. Casters are easily activated from inside the pod.
<b>Sprinkler and fire alarm</b>	Built in readiness to install sprinkler, fire alarm or stand-alone fire suppression system

## TECHNOLOGY

<b>Ventilation</b>	Automatic low energy-consumption air circulation system with boost mode.
<b>General light</b>	Dimmable automatic task and ambient LED lights with preset modes to ensure sufficient and proper lighting for various tasks. Light temperature 2700-5000K
<b>Control Panel</b>	Integrated Control Panel for dimming lights, ventilation and other functions of the booth
<b>Occupancy Light</b>	Automatic occupancy notification light outside of the pod, controlled by presence sensor
<b>Power outlet</b>	<ul style="list-style-type: none"> <li>• Sockets on the tabletop of optional Integrated Table</li> <li>• Possibility to add and retrofit up to 6 sockets on the wall</li> <li>• No sockets in standard</li> </ul>
<b>Power cord</b>	4 m long cord, connection either from the top or bottom of the pod (can be chosen during installation)



# Space Meet 2 general product info

## FURNITURE AND EXTRAS

<b>Table options</b>	<ul style="list-style-type: none"> <li>• Integrated table with bracket on tabletop for up to 3 sockets               <ul style="list-style-type: none"> <li>– Tabletop size 70 x 65 cm, height 75 cm</li> <li>– Socket options on the tabletop (up to 3)                   <ol style="list-style-type: none"> <li>1. Power outlet (110-230V)</li> <li>2. USB-A/C power outlet (5V @ 15W)</li> <li>3. CAT6 socket (including CAT6 cable coming out from the booth)</li> </ol> </li> </ul> </li> <li>• No table (no sockets on the floor, option to add sockets on the wall)</li> </ul>
<b>Seating options</b>	<ul style="list-style-type: none"> <li>• Elegant and comfortable SPACE sofas with armrest on one side</li> <li>• Simple yet functional VEGA sofas for comfortable seating</li> <li>• No seating</li> </ul>
<b>Screen mount options</b>	<ul style="list-style-type: none"> <li>• Swivelling and movable screen mount with power cable, fixed to the Integrated Table (fixed to the middle power bracket on the tabletop)</li> <li>• Screen bracket on the side wall, height can be chosen during installation</li> <li>• No screen bracket</li> </ul>
<b>Seismic kit</b>	Optional seismic kit for anchoring booth to the floor
<b>Ventilation inlet filter</b>	Filter which can be mounted on top of the fan to create a cleaner environment inside the booth
<b>Frosted glass</b>	Frosted film between glasses. Cannot be removed or retrofitted

## CERTIFICATION

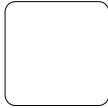
<b>Sound reduction</b>	Class A, official certification in process
<b>General safety</b>	GS-mark in process / UL962 in process
<b>Electrical safety</b>	CE-mark / UL962 is in process
<b>Emissions</b>	Indoor Advantage™ Gold certified by SCS Global Services
<b>Flammability</b>	Certification in process
<b>Sustainability</b>	Design-Phase EPD in process
<b>Recyclability</b>	Design-Phase EPD in process



# Space Meet 2 colors and materials

## EXTERIOR

### Standard exterior colors



**Chalk White**  
RAL 9010



**Charcoal Black**  
RAL 8022



**Cotton Grey**  
RAL 080 80 05

### Trims



**Charcoal Black**  
RAL 8022

### Veneered exterior colors



**Natural Oak**  
ALPI Vienna  
Oak Striped  
10.50



**Grey Oak**  
ALPI Breeze  
Oak 10.69



**Light Oak**  
ALPI Xilo Ice  
Striped 10.53

### Premium exterior colors



**Blush Pink**  
RAL 030 70 10



**Sand Yellow**  
RAL 090 80 40



**Stone Grey**  
RAL 100 70 10



**Sage Green**  
RAL 120 60 20



**Taupe Grey**  
RAL 060 50 05



**Clay Red**  
RAL 030 30 40



**Sky Blue**  
RAL 240 50 20



**Ink Blue**  
RAL 280 20 15

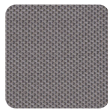
### Textile colors for exterior (Camira RePlay Zero)



**Black**  
ZER33



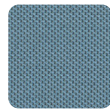
**Dark Grey**  
ZER29



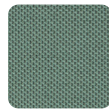
**Light Grey**  
ZER26



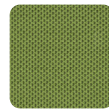
**Navy Blue**  
ZER02



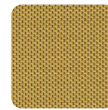
**Slate Blue**  
ZER01



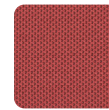
**Eucalyptus Green**  
ZER07



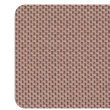
**Moss Green**  
ZER12



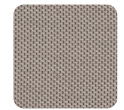
**Honey Yellow**  
ZER17



**Dusty Red**  
ZER20



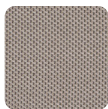
**Powder Pink**  
ZER15



**Cool Beige**  
ZER25

## INTERIOR

### Interior walls & ceiling

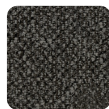


**Cool Beige**  
ZER25



**Dark Grey**  
ZER29

### Floor



**Dark Grey**  
Lano Miri  
Mir 0820

### Sockets & accessories



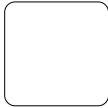
**Black**



# Space Meet 2 colors and materials

## FURNITURE

### Table tops



**White**  
HPL



**Matte Black**  
HPL



**Natural Oak**  
ALPI Vienna  
Oak Striped  
10.50

### Legs and fittings for furniture



**Charcoal Black**  
RAL 8022

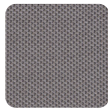
### Standard textile colors for seating (Camira RePlay Zero)



**Black**  
ZER33



**Dark Grey**  
ZER29

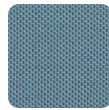


**Light Grey**  
ZER26

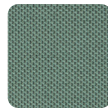
### Premium textile colors for seating (Camira RePlay Zero)



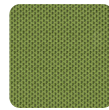
**Navy Blue**  
ZER02



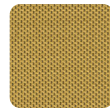
**Slate Blue**  
ZER01



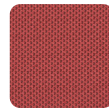
**Eucalyptus Green**  
ZER07



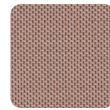
**Moss Green**  
ZER12



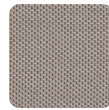
**Honey Yellow**  
ZER17



**Dusty Red**  
ZER20



**Powder Pink**  
ZER15



**Cool Beige**  
ZER25

