



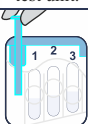
Read Before Use

As a precaution, gloves and eye protection should be worn when handling drug substances and using test units. Do not puncture any part of unit. Do not remove probe once a capsule is broken. In the unlikely event of a spill, rinse affected area thoroughly with water. Keep out of reach of children. All results are presumptive. If necessary, further testing by a competent drug testing lab can provide additional identification.

Test Preparation

1

Remove the probe from test unit.



2

Sample suspected substance.

Touch or Swipe

Touch probe to the suspected substance.

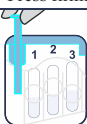


Swipe either side of the probe across the suspected substance.



3

Secure probe into test unit. Press firmly.



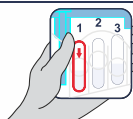
STOP

Do not continue unless probe is secured properly in place.

Identification

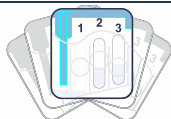
4

From both sides of the kit, squeeze on the circle of **Chamber 1** until the capsule breaks.



5

Gently shake test unit for 2-3 seconds.



Results



The appearance of a yellow color indicates the presence of a **Synthetic Cannabinoid**, such as:

Naphthoylindoles: JWH - 007, 011, 015, 016, **018**, 019, 020, **022**, 072, **073**, **081**, 098, **122**, **133**, 180, 182, 200, **210**, 213, 398, 424.

Benzoylindoles: AM - 223, **694**, **RCS - 4**.

Nathoylpyrroles: JWH - 030, 031, 145, 147, 307, 309, 368, 369, 370.



If no yellow color develops, the above substances are **not** present.

* The test will **not** react to the following substances:

Classical cannabinoids: THC, other constituents of cannabis and their structurally related synthetic analogues, e.g. HU-210, AM-906, AM-411, O-1184.

Nonclassical cannabinoids: cyclohexylphenols or 3-arylcyclohexanols such as CP-47, 497-C8, CP-55,940, CP-55,244.

Phenylacetylindoles: such as JWH - 203, 250.



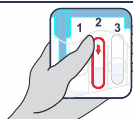
Proceed to Dilution (steps 6-9), regardless of whether or not a color appeared.



Dilution

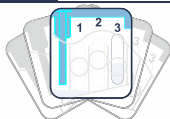
6

From both sides of the kit, squeeze on the circle of **Chamber 2** until the capsule breaks.



7

Gently shake test unit for 2-3 seconds.



Wait 5 minutes.
The test window will warm up. This is normal.

Dilution

8

From both sides of the kit, squeeze on the circle of **Chamber 3** until the capsule breaks.



9

Gently shake test unit for 2-3 seconds.



The test window will warm up. This is normal.



Disposal

After Dilution, the test kit is safe to dispose of in the trash.