



**Single-Acting pneumatic cylinder  
type ACLS**



# Single-Acting pneumatic cylinder type ACL

Trutorq Italia single-acting pneumatic cylinder type ACLS is designed to be reliable during tough operating conditions.

It is supplied with a long barrel in anodized aluminium and powder coated aluminium covers in order to resist corrosive environments.

It is available with spring return to closed (ACLS-C) or to opened position (ACLS-O).

The Namur interface according to VDI/VDE 3845 makes solenoid valve installations smooth and simple.

The cylinder can be supplied with pre-installed magnetic limit switches according to ISO 15552 and 3/2-way solenoid valve for single-acting operation upon delivery.

The supply pressure for the cylinder should be in between 5-10 bar and the air should be dry or oil mist.

Please contact Trutorq Italia or your local representative for advice and further information.

## ▶ VALVE ADAPTER

The ACL cylinder can be supplied with a valve adapter and a gate clevis set for perfect match to different knife gate valves, according to customers' requirements.



## ▶ NAMUR INTERFACE FOR SOLENOID VALVES

Solenoid valves can easily be installed directly onto the cylinder according the Namur interface VDI/VDE 3845. In this way the solenoid valve\_cylinder unit becomes really compact.



## ▶ SELF CONTAINED CONTROL SYSTEM

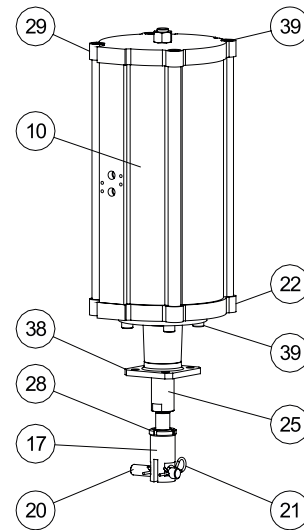
The cylinder barrel has a T groove, which makes it really easy to equip with magnetic limit switches.



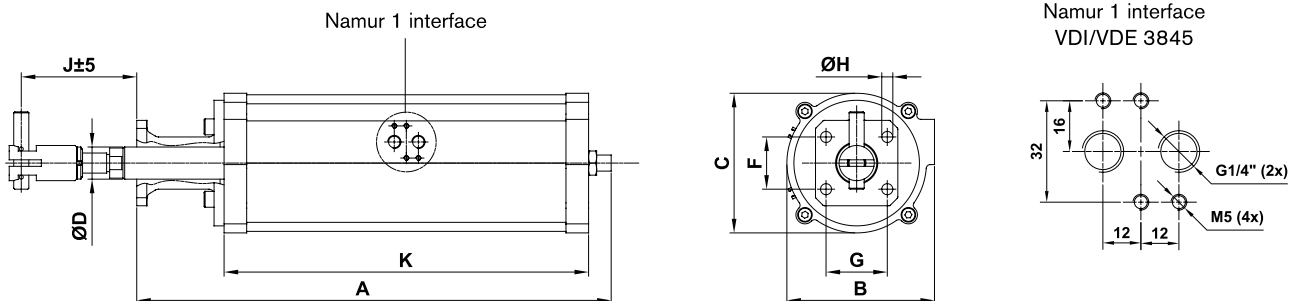


# Part list ACLS 125 - ACLS 160

Pos.	Detail	Material
10	Cylinder barrel	Anodized aluminium (Al6063)
17	Gate clevis	Stainless steel (EN 1.4305/SS 2346)
20	Clevis pin	Stainless steel (EN 1.4305/SS 2346)
21	Locking pins	Stainless steel (EN 1.4305/SS 2346)
22	Lower cover	Powder coated aluminium (Al6082)
25	Piston rod	Steel (C45E), phosphated and chromed with molykote coating in the ends
28	Locking nut	Stainless steel (EN 1.4305/SS 2346)
29	Top cover	Powder coated aluminium (Al6082)
38	Valve adapter	Powder coated aluminium (EN1706-43100-T6)
39	Hex socket screws	Stainless steel (A2)



## Drawing ACLS 125 - ACLS 160

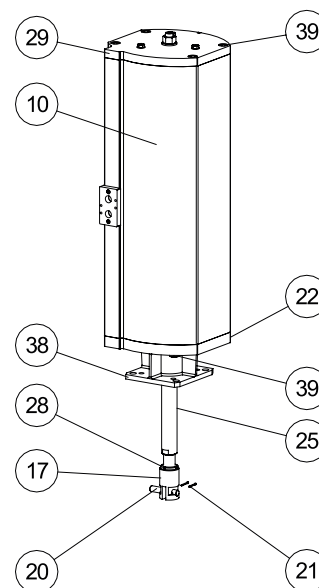


## Main dimension ACLS 125 - ACLS 160

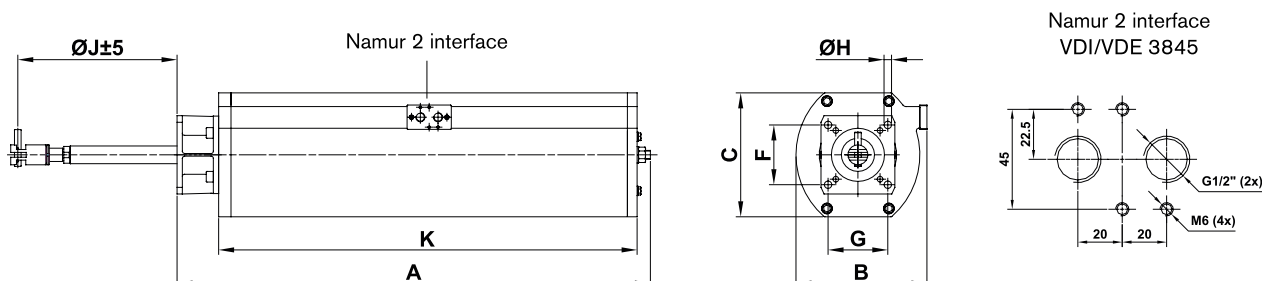
Dimensions (mm)											
ACLS type	Size	Stroke length	A	B	C	D	F	G	H	J	K
ACLS	125	90	473	147	139	32	52	61	11	115	363
ACLS	160	115	493	188	180	32	52	61	11	140	387
ACLS	160	140	593	188	180	32	52	61	11	165	483

# Part list ACLS 200 - ACLS 250

Pos.	Detail	Material
10	Cylinder barrel	Anodized aluminium (Al6063)
17	Gate clevis	Stainless steel (EN 1.4305/SS 2346)
20	Clevis pin	Stainless steel (EN 1.4305/SS 2346)
21	Locking pins	Stainless steel (EN 1.4305/SS 2346)
22	Lower cover	Powder coated aluminium (Al6082)
25	Piston rod	Steel (C45E), phosphated and chromed with molykote coating in the ends
28	Locking nut	Stainless steel (EN 1.4305/SS 2346)
29	Top cover	Powder coated aluminium (Al6082)
38	Valve adapter	Powder coated aluminium (EN1706-43100-T6)
39	Hex socket screws	Stainless steel (A2)



## Drawing ACLS 200 - ACLS 250



## Main dimension ACLS 200 - ACLS 250

Dimensions (mm)											
ACLS type	Size	Stroke length	A	B	C	D	F	G	H	J	K
ACLS	200	165	675	245	236	40	52	61	11	190	559
ACLS	200	215	854	245	236	40	100	110	13	255	743
ACLS	250	270	920	296	280	40	100	110	13	310	796
ACLS	250	320	1070	296	280	40	100	110	13	360	946



Note\_



Main dimensions are only for information. Contact Trutorq Italia for detailed drawings.





Trutorq Italia s.r.l.

Via Stelvio 20, 25038, Rovato (BS) | +39 030 7704201 | [info@trutorqitalia.com](mailto:info@trutorqitalia.com) | [trutorq.it](http://trutorq.it)

*"The specificity and the multitude of products do not allow a standardized list"*