

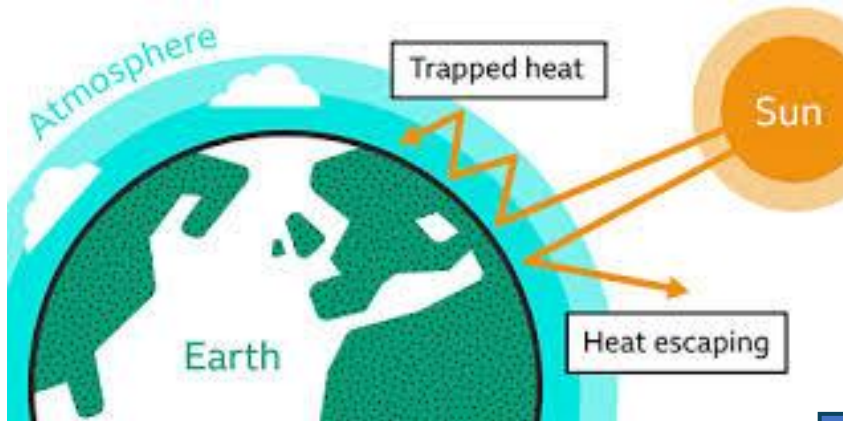
Geography - What is the human impact on the environment?

Term: Summer 1

Unit 4 - Year 5 & 6

Duration: 5 Weeks

Earth is warming up due to greenhouse gases keeping more heat in the atmosphere.



Greenhouse gases are produced in many ways, including pollution and mass farming.



Global average temperature by year, compared with the pre-industrial average (1850-1900)

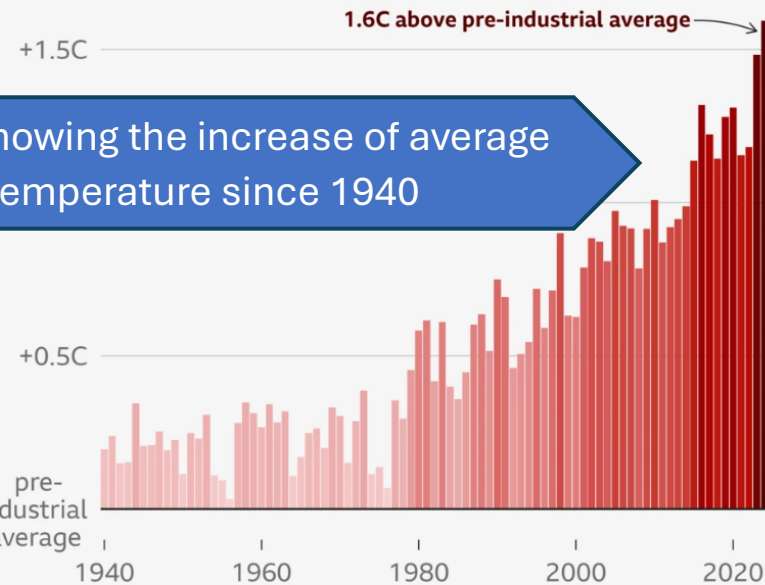


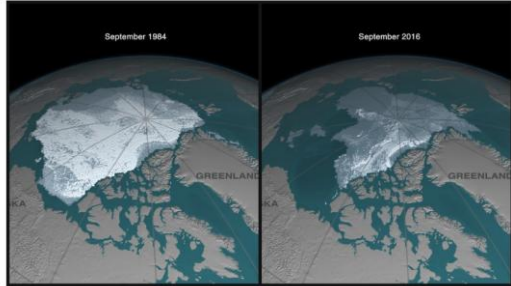
Chart showing the increase of average temperature since 1940

Deforestation also contributes to global warming because the trees can no longer remove carbon dioxide from the atmosphere.



One consequence of a warming Earth is melting ice caps.

Greta Thunberg is a climate activist who gained the world's attention by staging a protest outside of Swedish Parliament.



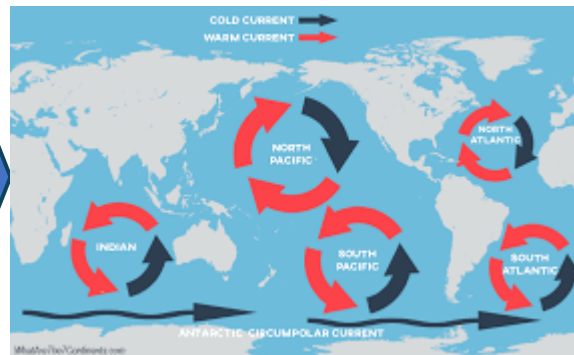
A comparison of Arctic ice in 1984 versus 2016. Image: NASA



Plastic pollution has a major environmental impact, as plastic takes hundreds and thousands of years to degrade.



Ocean gyres collect large areas of rubbish, including plastics. These get broken down into micro-plastics by the sun's UV rays, and are often eaten by marine creatures.



Key Vocabulary

Climate Change		Changes in the Earth's usual weather patterns over a long time, often caused by human activities like pollution.
Greenhouse gases		Gases in the air, like carbon dioxide and methane, that trap heat and make the Earth warmer.
Global Warming		The Earth getting hotter because greenhouse gases trap heat in the atmosphere.
Climate activist		Someone who works to protect the planet by encouraging others to fight climate change.
Emissions		Gases released into the air, often from cars or factories, that can warm the Earth.
Single-use plastics		Plastic items used once and then thrown away, like straws or wrappers.
Gyre		A large circular movement of ocean water that can gather rubbish into big patches.