



WASHINGTON CLIMATE
PARTNERSHIP

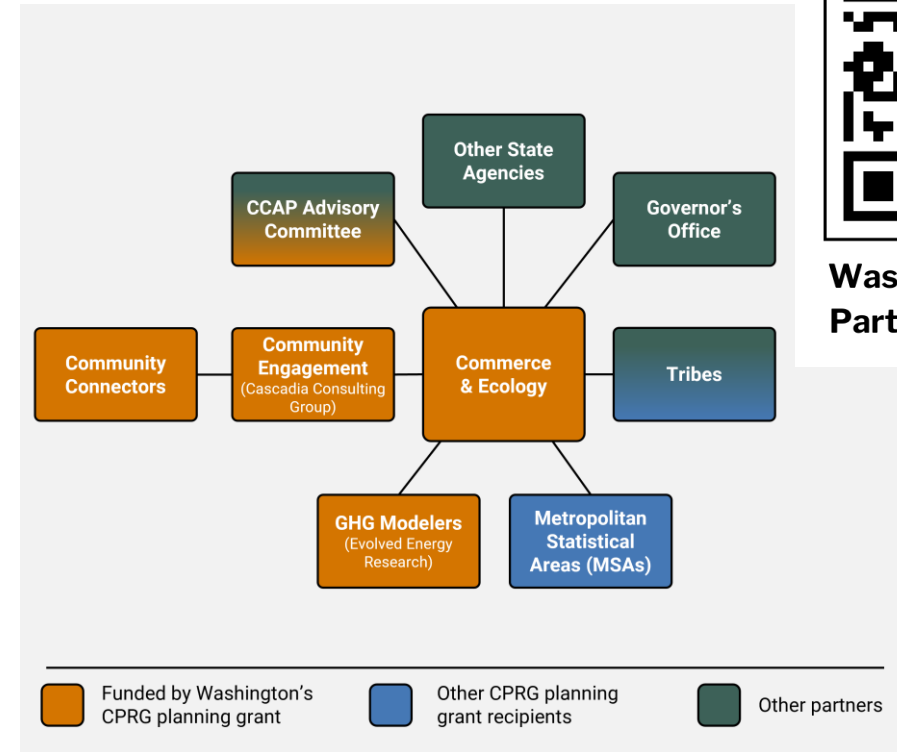
How can we include Washington State's Mass Timber industry in the climate action plan ?

Washington Comprehensive Climate Action Plan



Washington Climate Partnership and the CCAP

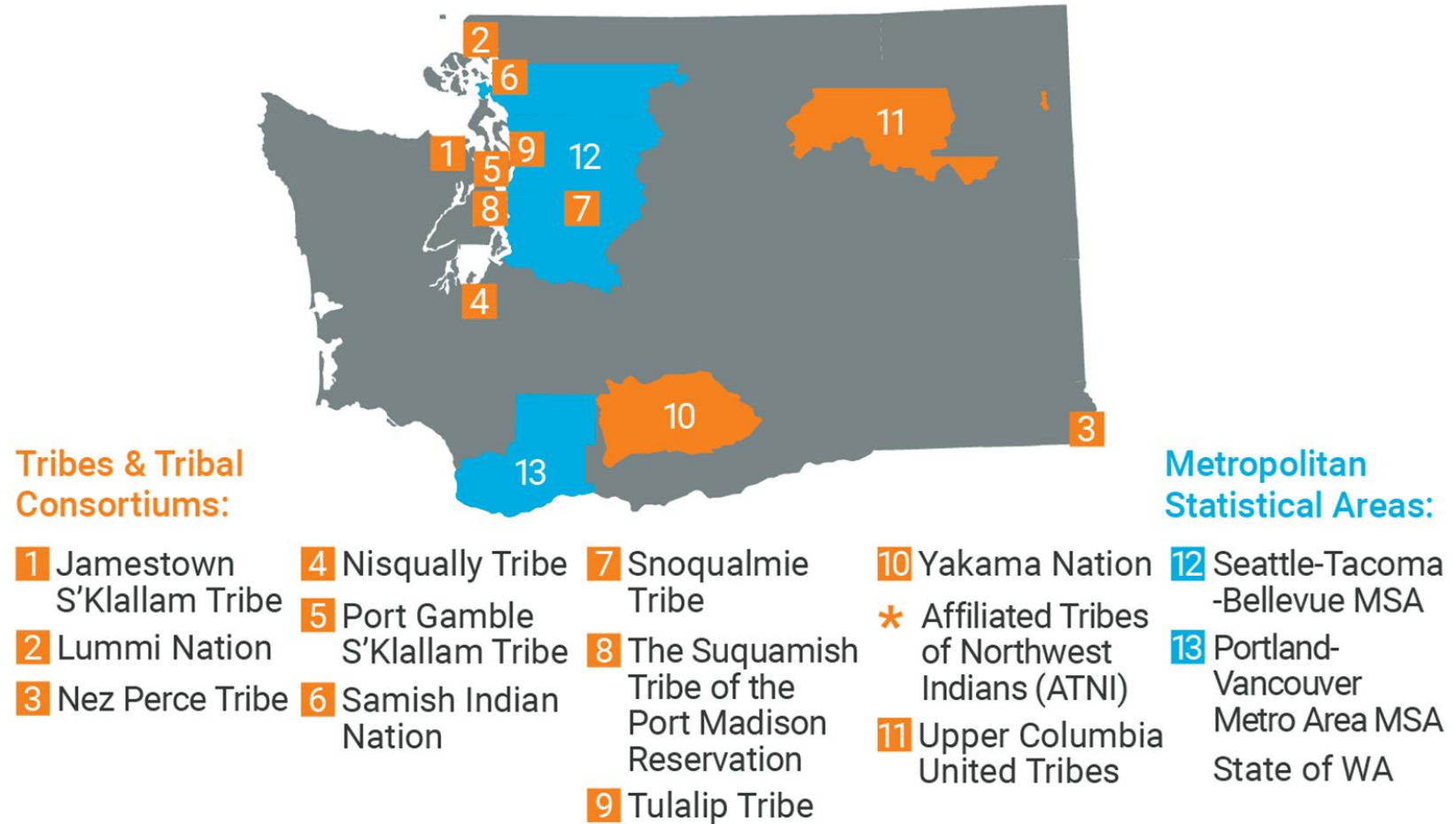
The Washington Climate Partnership



Washington Climate
Partnership website

The Washington Climate Partnership (WCP) is a statewide effort to plan near- and long-term strategies to meet state and federal climate and energy mandates. As we work to build climate action plans, we'll work with communities and address environmental injustice.

Non-State CCAPs



* The majority of ATNI’s member tribes reside on lands within the state boundaries of Oregon, Idaho, and Washington. In addition to serving all tribes within these states, ATNI also serves four tribes in Alaska, four in Montana, two in Nevada, and four in California.

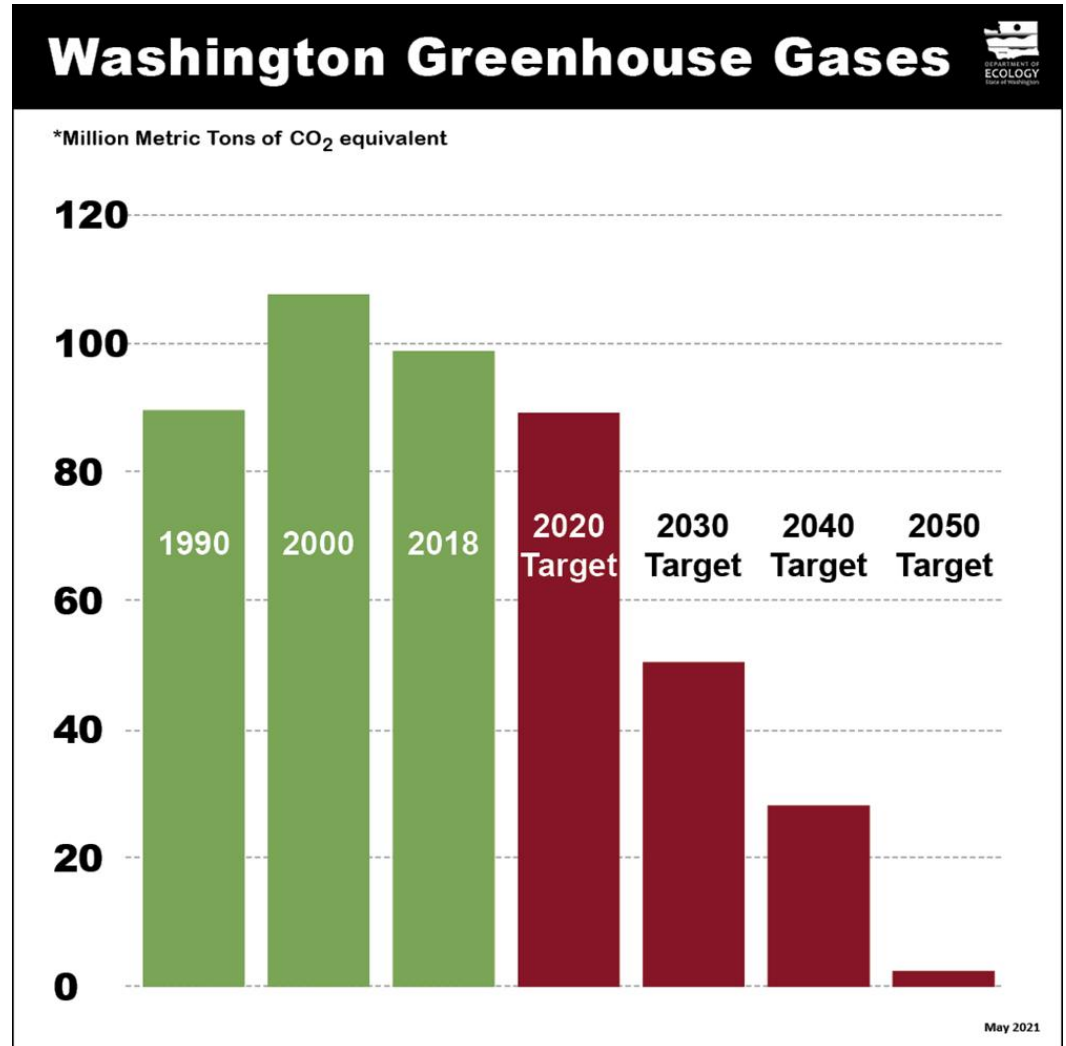
Washington State Climate Targets

Greenhouse gas emission limits

In 2020, the Washington Legislature set new greenhouse gas emission limits in order to combat climate change. Under the law, the state is required to reduce emissions levels:

- 2020** – reduce to 1990 levels
- 2030** – 45% below 1990 levels
- 2040** – 70% below 1990 levels
- 2050** – 95% below 1990 levels and achieve net zero emissions

★ This 2050 goal limits the added sequestration component of our state emissions budget to 5% of 1990 baseline emissions



Washington Climate Partnership Timeline

Phase 1: Priority Climate Action Plan (March 1, 2024)

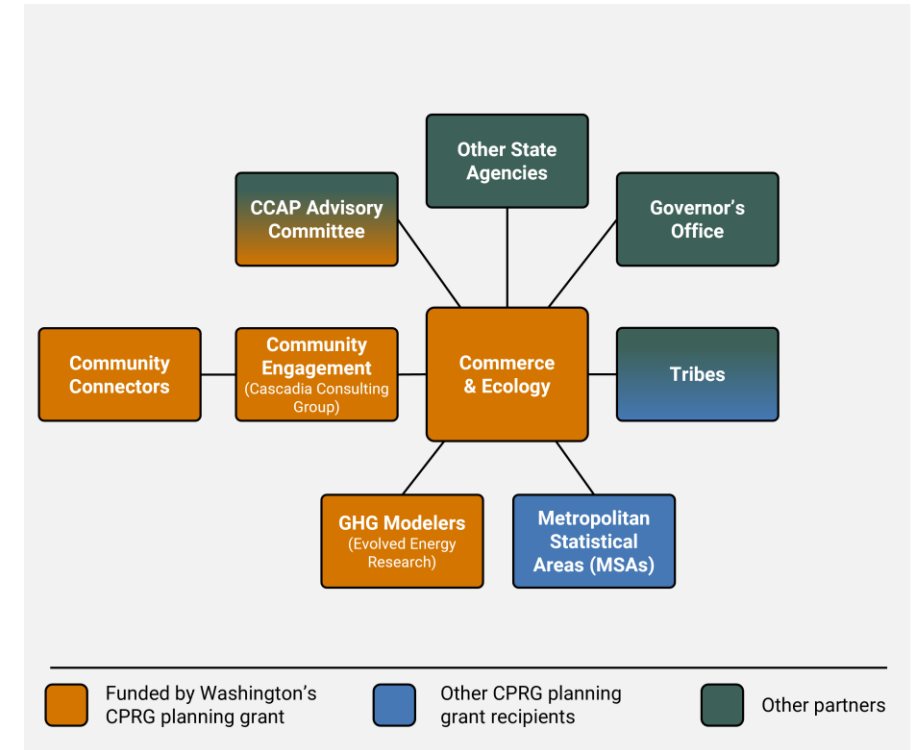
Washington State Priority Climate Action Plan Measures



Phase 2: Comprehensive Climate Action Plan (Due Dec 1, 2025)



Phase 3: Status Update (Due Summer 2027)





Mass Timber & Climate Action measures

Comprehensive Climate Action Plan



The Washington Priority Climate Action Plan didn't include a natural and working lands section, but the Comprehensive Climate Action Plan will include this section, separate from agriculture.

CCAP greenhouse gas measures: required elements

Measures must include:

- Measure description
- Quantified greenhouse gas emissions reductions
- Key implementing agency or agencies
- Implementation schedule or milestones
- Expected geographic location
- Authority to implement or milestones for obtaining authority
- Identification of funding sources
- Measure costs
- Metrics for tracking progress

DRAFT Natural and working land strategies

1. Preventing carbon release through landscape conversion or degradation
2. **Sequestration intensification (storing more carbon in landscapes & natural products)**
3. **Forest management and resilience to wildfire**
4. Natural product waste
5. Geologic carbon storage/Direct air capture/Marine accelerated weathering etc

Sequestration intensification in natural products

Support Mass Timber – certified wood product to replace cement and steel in construction

- Promote wood as a primary building material in new public buildings (BC wood first act)
- Certification program? WA registries (suppliers, builders?)

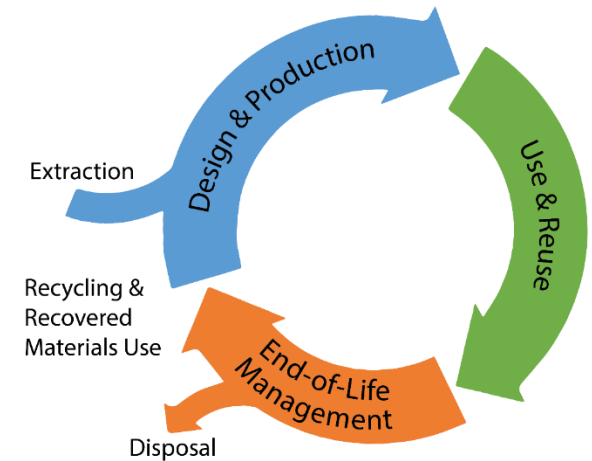
Forest management and resilience to wildfire

Timberland harvest (thinning, extended harvest rotations, deferments)

- Are there ways the state can help support carbon sequestering wood suppliers in WA?

Waste & Materials Sector

- Most material greenhouse gas emissions are from production and use of products, not disposal
- Waste management accounts for 3.5% of emissions in WA (as of 2021)
 - WA Consumption-based emissions inventory in development to provide a more complete picture of emissions
- By managing materials through all stages of their life cycle, we are best able to reduce harmful environmental, health, and climate effects



DRAFT Waste and materials management strategies



Reduce methane emissions from food and organic waste



Grow the circular economy



Reduce material-based life cycle emissions



Sustainable building construction & demolition*



Reduce emissions from waste management systems

*crossed with buildings sector

Provide input in the survey on our Washington Climate Partnership website

Washington State Priority Climate Action Plan Measures



**Washington Climate
Partnership website**