



Farmblox



Universal Monitor

Product Manual



v1.0

Universal Monitor Overview

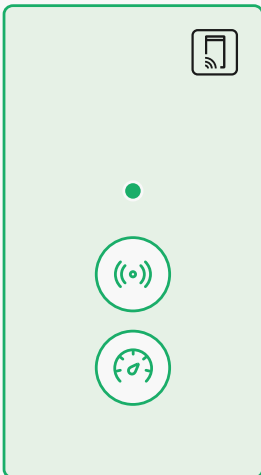
The universal monitor is the core of the Farmblox system. Its primary function is to transmit readings from sensors to the app via wireless connection to the Farmblox base station.

The universal monitor box features an NFC tag, two buttons and, an LED status light.



NFC Tag: The Universal Monitor features an NFC tag so monitors can be easily added to the Farmblox app. Tap phone here when prompted from the app.

Button Functions



Short Press: To check the connection status of the Universal Monitor.

- The LED will blink three times slowly if offline, or three times rapidly if online.

Long Press: To connect the universal monitor online to the network.

- The LED will flash green slowly while the monitor tries to connect and three times rapidly when it has connected online.

Short Press: To take an instant sensor reading.

Install in the App

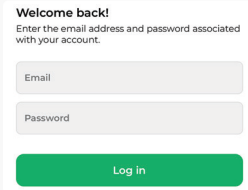
Add Device to App

Before using a Universal Monitor Box and sensor, it must be added to the Farmblox App.

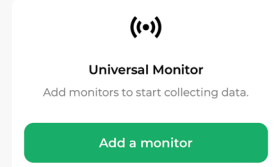
1. Install the Farmblox App.



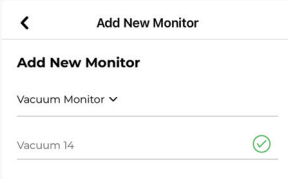
2. Login/Create an account.



3. Add your first monitor



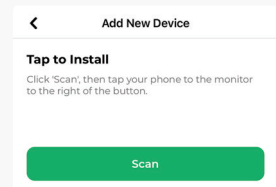
4. Select sensor type and give monitor a unique name.



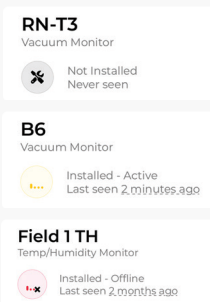
5. Press "Add and Install". Follow on-screen instructions.



6. Add a Device.



Installation Tips



"Not Installed" - Press and hold monitor join button.

"Never Seen" - Monitor unable to see base station after install. Move monitor for a better connection and repress the connect button.

"Offline" - Monitor unable to see base station. Move monitor or base station higher, or monitor to side of tree facing base station for a better connection. Press the monitor connect button.



Need some help?

support@farmblox.ag