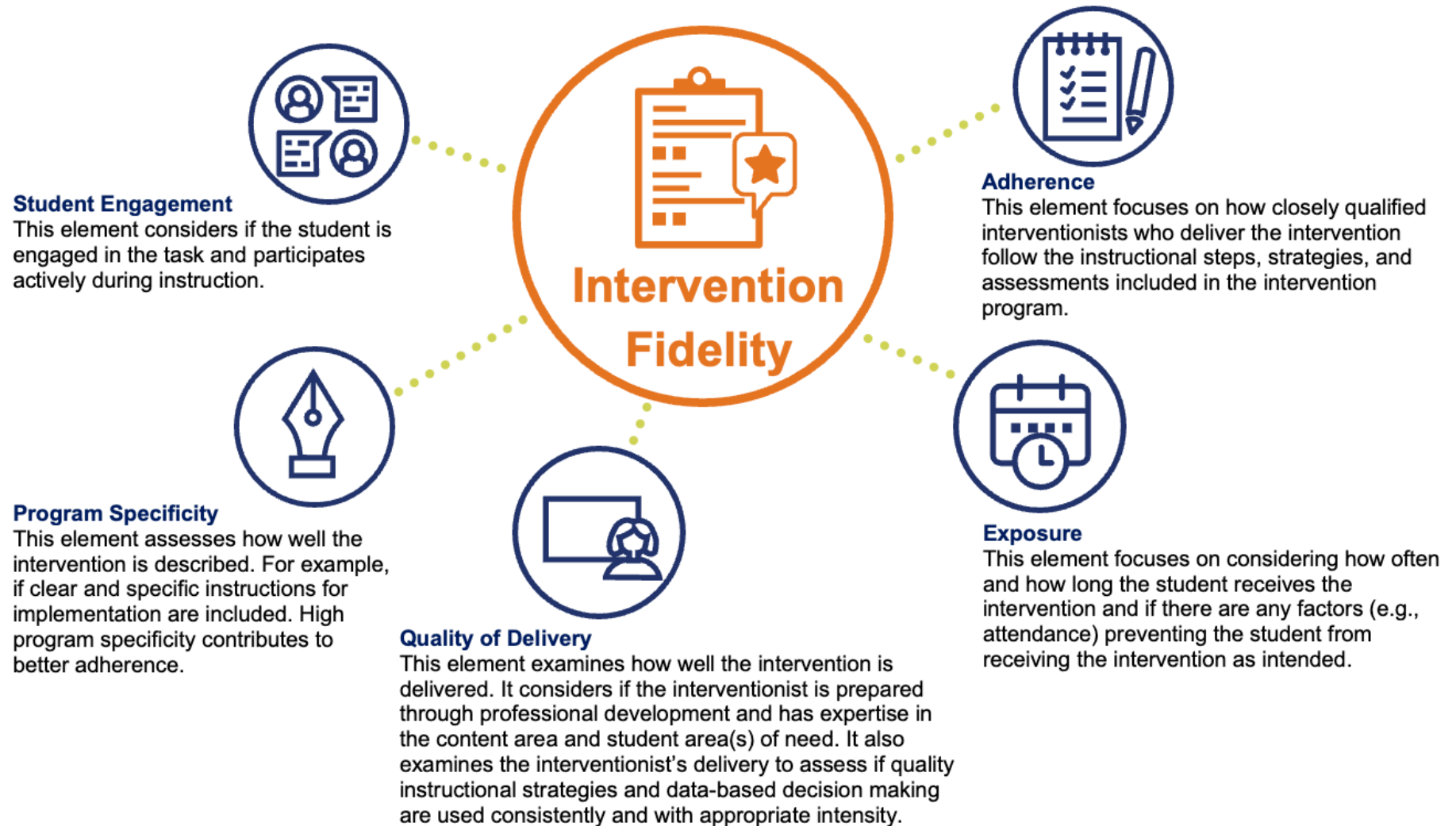


Elements of Intervention Fidelity

Purpose: The graphic below describes elements that should be considered when monitoring intervention fidelity, developed by the National Center on Intensive Intervention (2021).



Acknowledgements

This resource is adapted from:

National Center on Intensive Interventions at the American Institutes for Research. (2021). Considerations for effective implementation: 5 elements of fidelity [Infographic].

https://intensiveintervention.org/sites/default/files/5_Elements_Fidelity_508.pdf