

iLuxe for Apple



iLuxe Cube Manual

Content

1. Getting started with iLuxe Cube
2. Downloading the BackupBOT App
3. Initial App setup
4. Automatic backup
5. BackupBOT App interface overview

Tutorial Videos:



Tutorial 1: How to Install the BackupBOT APP



Tutorial 2: Initial Setup and Backup



Tutorial 3: Advanced Features and Media Playback



Tutorial 4: Security Settings and File Recovery



Getting started with iLuxe Cube

To begin, connect the USB Type-C plug of the iLuxe Cube to a charger or power outlet. Then, use either a Lightning or USB Type-C cable to connect your iPhone or iPad to the iLuxe Cube, depending on your device's compatibility.



Downloading the BackupBOT APP

After connecting the iLuxe Cube to power and your iPhone or iPad, a prompt will appear suggesting the app download. Simply select "App Store" to proceed.

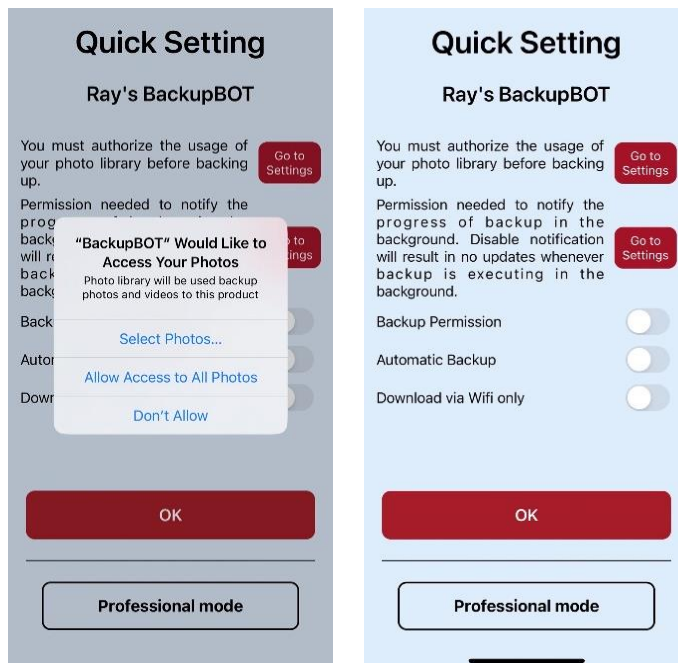
(If the prompt does not appear, you can manually search for "BackupBOT " in the App Store to download the app.)





Initial App setup

When launching the BackupBOT App for the first time, you will be prompted to grant access to your photo library and notifications. Approve all permission requests during the setup process to enable full functionality. If needed, permissions can be adjusted later through your device settings. Next, create a name for your backup folder, and you're ready to begin backing up.



Automatic backup

Once the BackupBOT App is installed, backup will initiate automatically whenever your iPhone is connected to the BackupBOT for charging. No additional steps are required.



BackupBOT App interface overview

1. Screen recording: The screen recording feature allows users to capture screen activity and save it as a video.
2. Camera: The camera feature enables users to take photos, record videos, and create shorts.
3. Photos / Videos: View photos and videos stored on the iLuxe Cube.
4. Partial backup: Back up only the photos, videos, and files you choose from your iPhone/iPad.
5. BackupBOT: Manage and review all content saved through the iLuxe Cube App.
6. Continue: Pause or resume video playback.
7. BACKUP and Restore: Backup all photos, videos, and files from your iPhone/iPad, or restore content from the iLuxe Cube back to your device.
8. iPhone: Manage and view all content stored from your iPhone/iPad via the iLuxe Cube App.
9. Favorite: Save and view your favorite content. To mark photos or videos as favorites, switch to list view.
10. Settings: Configure various iLuxe Cube settings.

11 / 12 Trust circle:

The first device to connect and activate the Trust Circle feature will be designated as the Owner. The Owner has the authority to add or remove members from the Trust Circle.

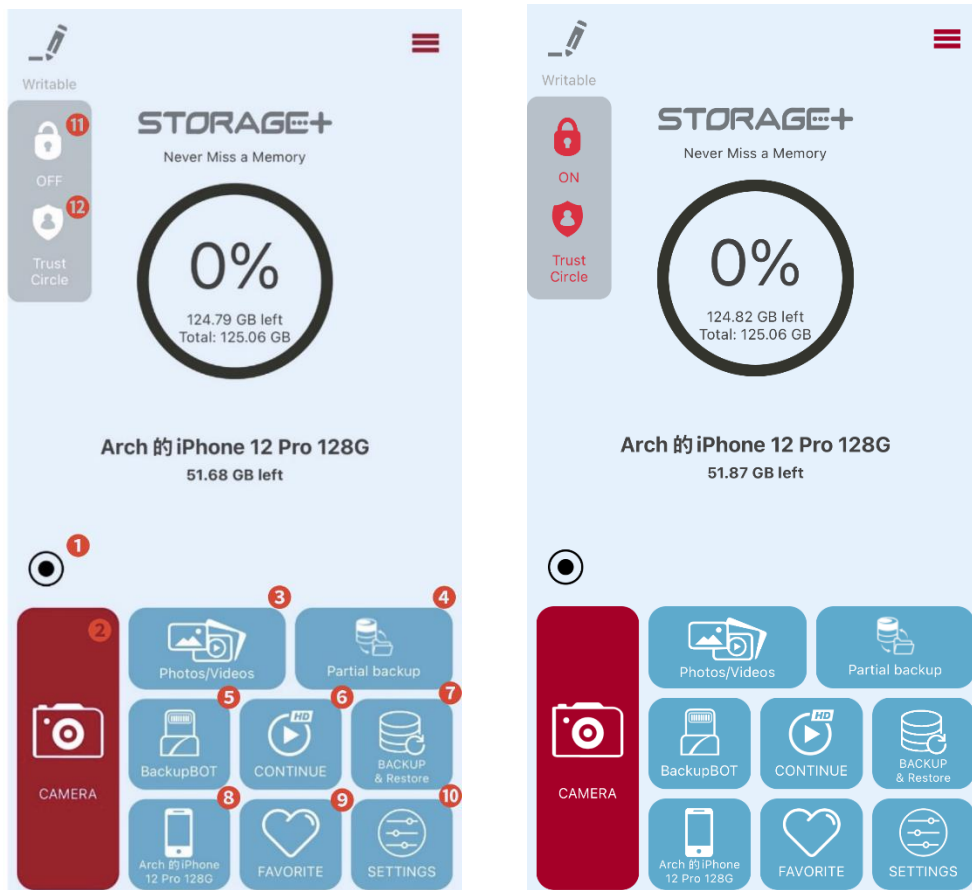
- Owner setup:

Open Trust Circle > Set up member accounts > Create a PIN code > Setup complete.



- Adding members:

In the Trust Circle screen, press the '+' button > A password will be automatically generated > Disconnect the current iPhone > Connect the new iPhone and enter the generated password > Trust Circle member successfully added.



Additional Description for the screen:

The screen on the left displays the icon for Trust Circle being turned off, while the screen on the right shows the icon for Trust Circle being turned on.



© 2024 Patriot Memory, Inc., All rights reserved.

Patriot Memory, Inc. makes no warranty, representation or guarantee regarding the suitability of the products for any particular purpose or the continuing production of any product. To the maximum extent permitted by applicable law, Patriot Memory, Inc. disclaims (i) any and all liability arising out of the application or use of any product, (ii) any and all liability, including without limitation special, consequential or incidental damages, and (iii) any and all implied warranties, including warranties of fitness for particular purpose, non-infringement and merchantability. No warranty is made that the products described herein will be free from defects, function without interruption, or that the information or data provided will be secure or free from loss.

Additionally, Patriot Memory, Inc. may amend, update or otherwise change product specifications or information, at any time and without prior notice. No part of this material may be reproduced or adapted for commercial purposes, in any form or by any means, without prior written permission, unless permitted by law.