

EPDM MULCH

The durable surface design in a
natural look

- ✓ Maximum durability
- ✓ High color consistency
- ✓ Highest weather resistance
- ✓ Optimal bulk density



Durable, economical, safe: Melos EPDM mulch

Safe

EPDM mulch can be used for both single-layer and two-layer system structures. Two-layer system structures are installed with a shock-absorbing, elastic base layer made of SBR granules and rubber fibers with a grain size of 1.0–8.0 mm.



Two-layer system

Durable

EPDM mulch is ideal for anyone looking for a durable, color-fast alternative to rubber mulch made from old tires. Melos EPDM mulch is manufactured from high-quality raw materials as virgin material and is 100% solid-colored. Compared to PU-coated mulch types, the color of EPDM mulch remains intact over the long term.



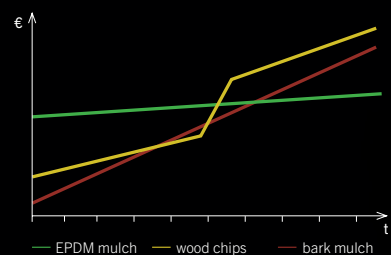
Melos EPDM mulch,
100% solid color

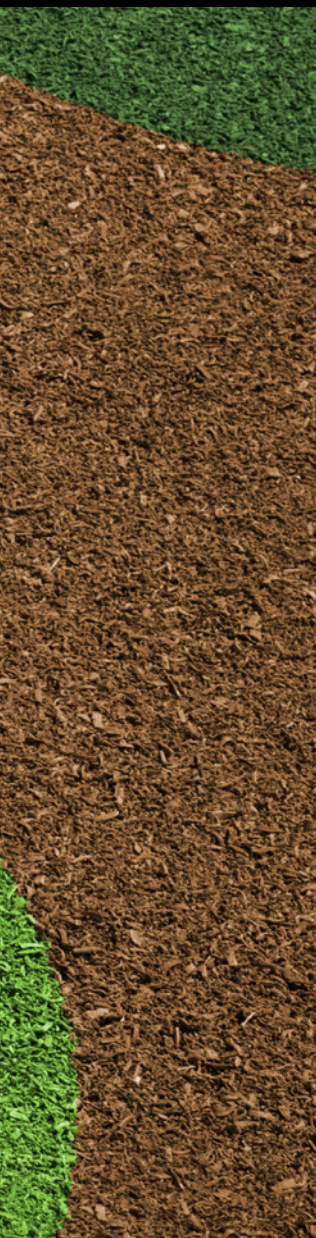


Coated rubber mulch
made from old tires

Economical

Bark mulch and wood chips are significantly more susceptible to contamination. Contaminants are more easily buried under loose pieces of wood and overlooked during cleaning. With a bound surface made of EPDM mulch, contaminants are visible and easy to clean – this reduces maintenance costs and increases safety in the long term.





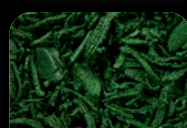
BEIGE
462195 RAL 1001



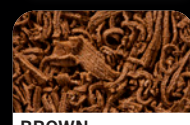
RED
460095 RAL 3016



MAY GREEN
464195 RAL 6017



RAINBOW GREEN
465695 RAL 6025



BROWN
462895 RAL 8024



BLEND BEIGE-BROWN
462196 RAL 1001
+RAL 8024



BLEND BROWN-RED
462896 RAL 3016
+RAL 8024



BLEND GREEN
464196 RAL 6017
+RAL 6025

50 50

50 50

50 50

