


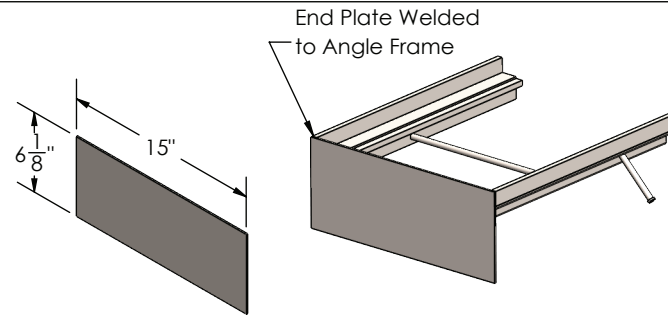
T-14A Angle Frame - End Plates

Material: 1/8" Carbon Steel
 Finish: Plain Steel or Galvanized Steel
 (to match trench frame)

End plates are sold separately as an optional installation accessory

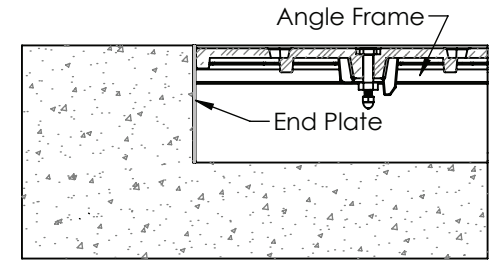
Angle frame end plates are supplied pre-welded to trench frame

Made in USA 

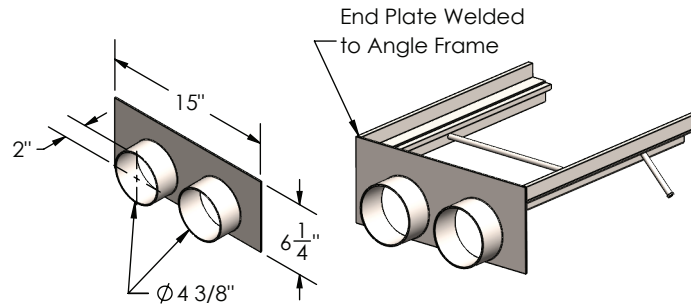


Part No. P-14A-CL

CLOSED END

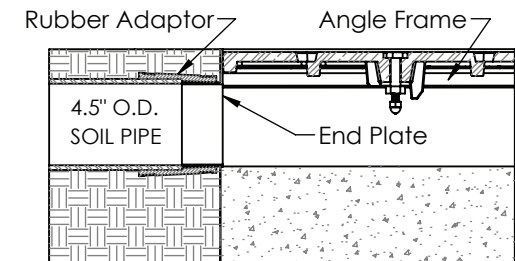


(TYPICAL INSTALLATION DETAIL)

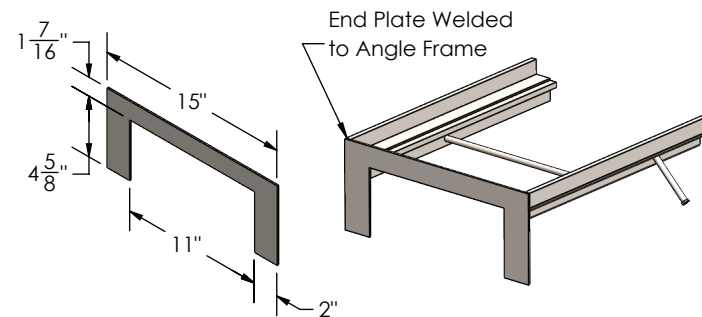


Part No. P-14A-PP

PIPE ENTRY

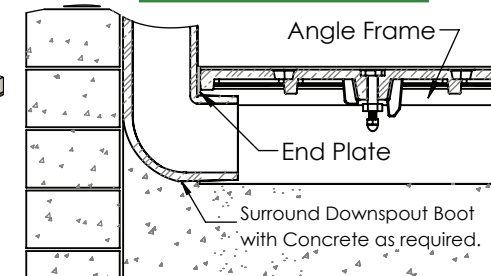


(TYPICAL INSTALLATION DETAIL)

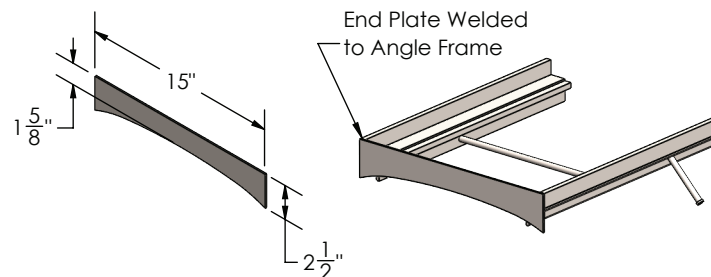


Part No. P-14A-DS

DS BOOT ENTRY

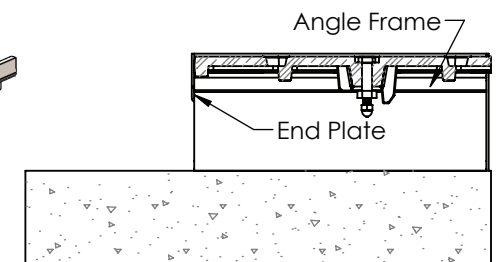


(TYPICAL INSTALLATION DETAIL)



Part No. P-14A-CP

COVER PLATE



(TYPICAL INSTALLATION DETAIL)