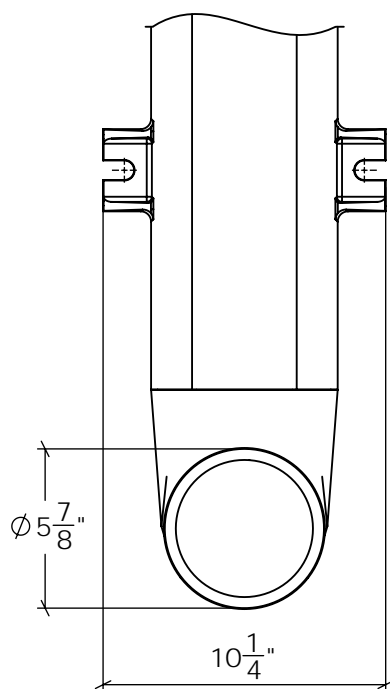
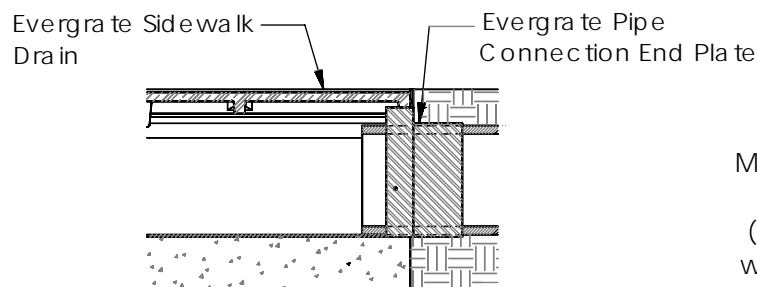


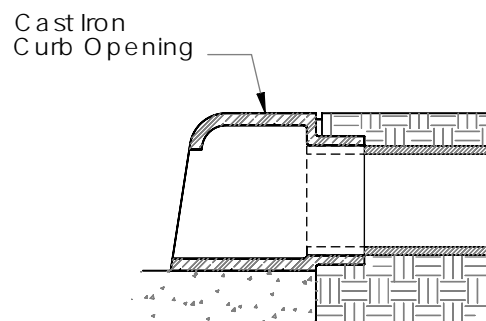
**TOP VIEW**



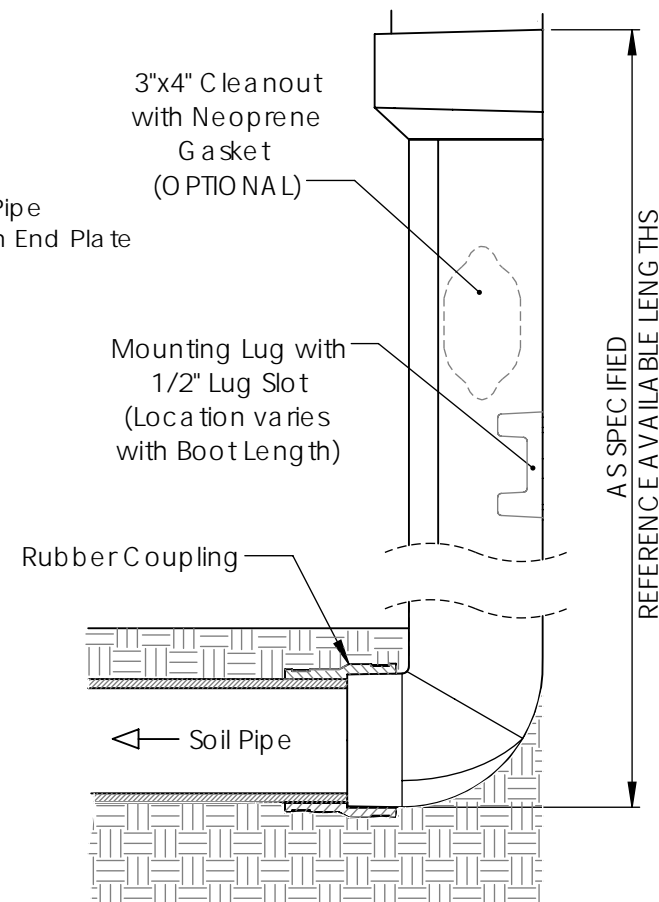
**OUTLET FRONT DETAIL**



**SOIL PIPE TO TRENCH DRAIN**



**SOIL PIPE TO CURB OPENING**



**OUTLET SIDE DETAIL**

**AVAILABLE LENGTHS:**

24", 36", 48", 60", 72"

\*Units over 36" in length supplied in 2 piece assemblies

\*Cleanout available by request.

## N-66 Cast Iron Downspout Boot

Material: ASTM-A 48 Class 30B Cast Iron

Finish Options: Plain, Architectural Powder Coating

