

The Donald Project Digest



Quarterly update on the Donald Rare Earth and Minerals Sands Project near Minyip.

Donald Project receives milestone approval

AFTER 20 years of careful planning, environmental assessment, and community engagement, the Victorian Government has approved the Donald Project work plan.

The approval follows a thorough evaluation process under Victoria's strict mining legislation and attests to our commitment to developing the resource responsibly.

Tiger Brown, DMS managing director, said: *"After a comprehensive regulatory process this approval means we can now move to a Final Investment Decision and the project opportunities and benefits that will follow for our community and the region."*



The work plan will guide the project. It identifies and assesses all potential risks, and includes our plan to manage them, engage our community, and rehabilitate our land.

Installing our water pipeline

THIS month we'll begin installing an 11-kilometre water pipeline from Minyip Rural Pump Station along Gun Club Road to our project site off Walsh Lane.

This early project-enabling work is happening before a Final Investment Decision, expected later this year. Site construction would then follow.

Our contractors are using a combination of trenching and boring to install the pipeline. All work will be in the public road reserve.

Work hours will be 7am to 6pm daily through to December. Weekend work will be by exception. Traffic control will maintain access for road users accessing properties along the route. We'll post updates to our Facebook page.

Join our next community information session

WE'LL host our next community information session in Minyip next month.

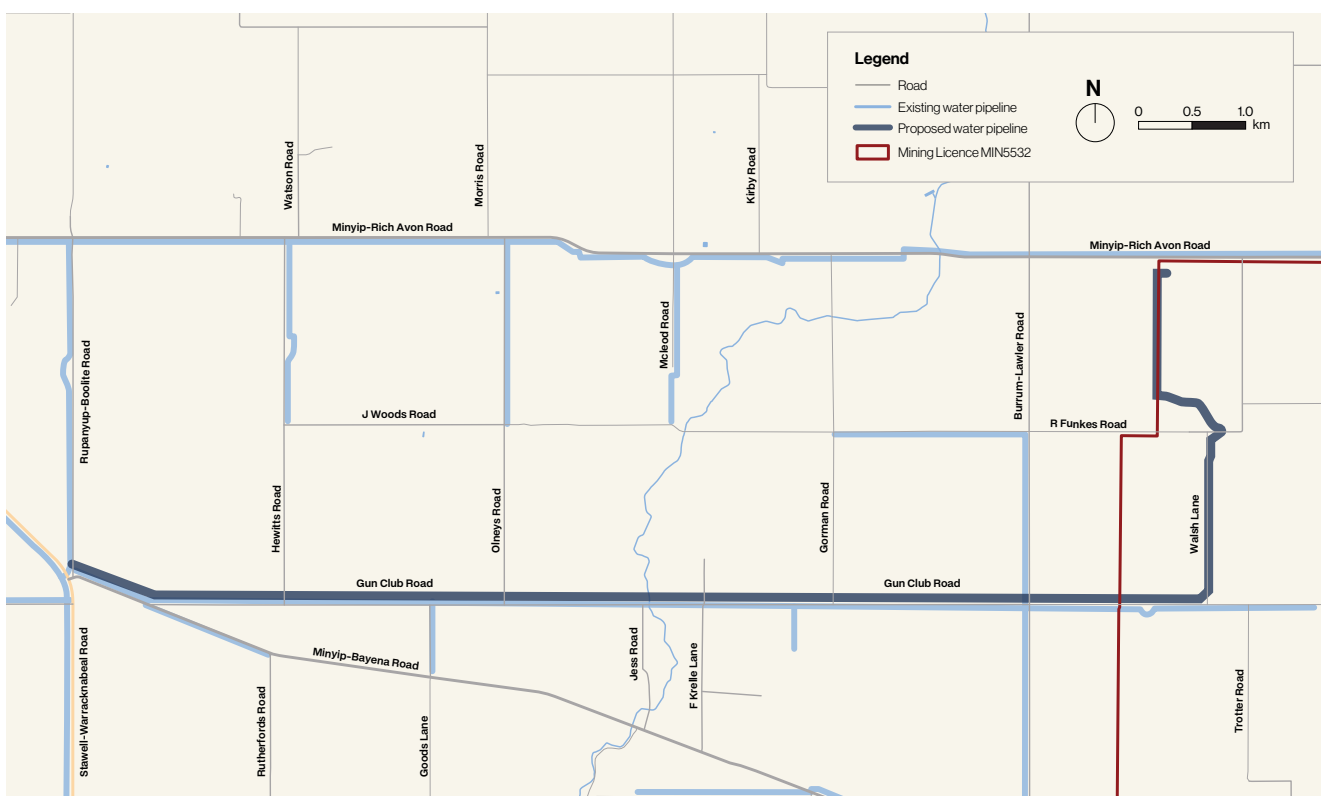
Where: Minyip Senior Citizens Hall, 72 Main Street, Minyip

When: Wednesday, 10 September 2025. Two sessions: 2pm–4pm and 5pm–7pm

What to expect:

- Work Plan approval updates
- New water pipeline along Gun Club Road details
- Project displays and information
- Jobs and supplier opportunities
- Q&A and feedback sessions
- One-on-one discussions with project team

If you can't join us, visit our DMS office at 23 Church Street, Minyip, or join one of our regular "Coffees on Us" drop-in sessions around the district



Employment opportunities ahead



WE recently participated in country Victoria's biggest careers extravaganza, July's annual Western Victoria Careers Expo.

Our Community Engagement lead, Sue Horn, and Communication Lead, David Fleming, spoke with visiting students, teachers, and careers support workers about opportunities the Donald Project will offer. The project will directly employ about 100 people and our long-term contractors another 100.

Find out more in our [Careers fact sheet](#), on the [Publications](#) page of the Donald Project website. You can register your interest now at careers@thedonaldproject.com.au.

Setting up environmental oversight

WE'LL extract ore containing naturally occurring radioactive materials (NORM) one-tenth the level of Victoria's threshold limits for extraction. As the project moves to operations, we'll publish sampling results to demonstrate compliance with these limits. From extraction through to processing in our enclosed facility, the ore stays wet and contained within our process circuit before the final product is packed into sea containers.

The entire process circuit by its nature, removes any pathway for our ore to become airborne. Site generated dust will be comparable to regional dust sources from roads or agriculture. Our main protection for dust suppression uses significant mobile equipment that we keep on site. For transparency, we'll publish the results of our real-time air monitoring. Other monitoring includes visual, noise, groundwater, and radiation, which the ERC will review.

Find out more on the [Donald Project website](#).

Need to know: key project information

AS the project moves forward, we want everyone to have the facts on key topics.

Land access

DMS will own all the land within the work plan area before we begin operating. We have bought the land following negotiations with landholders to reach mutually acceptable terms.

Environment

We'll extract ore containing naturally occurring radioactive materials well below Victoria's legal limits. We'll publish sampling results to demonstrate compliance with the *Nuclear Activities (Prohibitions) Act 1983*. Airborne ore particles will be minimal because the ore stays wet, from extraction through processing in our enclosed facility. Site dust composition, from establishing the site and accessing the ore, will be like farm dust. We'll use groundwater, captured surface water, and piped supply for dust suppression, adjusting operations during high wind events. We'll publish the results of our real-time air monitoring. Other monitoring includes visual, noise, groundwater, and radiation, which the ERC will review.

Water

We purchased our water entitlement from GWMWater in 2011 from Wimmera Mallee Pipeline project savings. We plan to use half the entitlement in Phase 1 (activities within licence MIN5532). GWMWater confirms our allocation will not affect other customers' supply or pressure. We will minimise reliance on this entitlement by using hypersaline groundwater, unsuitable for agriculture, and captured rainwater. We have previously given part of our allocation in times of drought. We will continue to do our part in supporting water resilience.





Rehabilitation

We will use the "moving hole" extraction approach, progressively rehabilitating mined blocks as we move across the site. We have developed a comprehensive Mine Rehabilitation Plan to return the land to productive use. Before disturbing the soil, we will map the characteristics of the soil horizons. A rehabilitation expert will supervise as we use GPS-guided precision equipment to carefully remove, and store mapped soil layers. After extracting the ore, we will carefully replace the soil layers, leaving a safe, stable, and sustainable site.

Transport

We will improve the local roads we are using, and support Yarriambiack Shire Council with their maintenance. We're working with the council and the Department of Transport and Planning on plans to upgrade the "six-ways" intersection and Minyip-Rich Avon Road. We'll use the roads safely. Our trucks will bypass Minyip's centre, operate only during daylight, and avoid school times.

Contact us

-  www.thedonaldproject.com.au
-  enquiries@thedonaldproject.com.au
-  03 5385 7088
-  23 Church St, Minyip VIC 3392