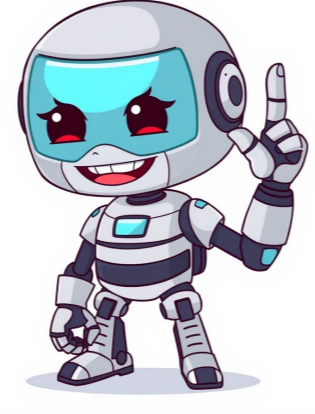


Click to verify























The specifications are subject to change without notice or obligation. The office hours for the Evenheat Kiln, Inc. facility in Caseville, Michigan, USA are from 8:30 AM to 4:30 PM. Copyright 2025 - All Rights Reserved This website uses cookies to deliver a better user experience. By continuing to use this website, you agree to the Policies & Terms for this website. Ceramics Kiln - Evenheat 5320 Name Mr. Hottie Zone Ceramics Zone Owner i3Detroit Make Model Evenheat 5320 Volts = 240 Amps = 24 Cone = 8 Part Number Date Acquired 2013-08 Storage Location In Kiln Zone Authorization Required Yes Status Running Value \$500 Documentation Kiln Manual Sifter Manual Other References Mfr Page Intro Rules Use with Kiln Wash, Remove any cardboard/plastic boxes from cage area during use. ## Kiln Operation and Maintenance The manual operation of the kiln requires careful attention to detail. Expect to change heating elements every 100-300 firings. FAQ 1) How to Plug in the Large Ceramic Kiln a) The kiln probably has this type of plug pattern in the end of the cord (Type 2). b) The sockets on the wall have this type of pattern (Type 1). c) We built an extension cord with a Built In Adapter. Socket for Type 2 leading to plug of Type 1. To use the kiln, plug it into the extension cord. There are two places to plug in the Type 1 plug: The socket on the East wall of the Kiln Zone and the Switch Box on the fence on the South side of the zone. Programming the Kiln Controller To program the controller, follow these steps: Step 1) Turn ON controller with Green button. You should see the current temp in PV display. Step 2) Push the SET button. You should see PASS in the PV display and 0000 in the SV display. Step 3) Use >, ^, and v to type in 2000 and hit SET. Firing Schedules You will see instructions for firing schedules similar to this: Ramp up the temperature from room temp to 1250F at a rate of 300F per hour. Then hold 1250F for 30 minutes. Then ramp from there to 1420F at a rate of 300F per hour. Then hold it for 30-60 minutes. Then ramp as fast as you can from there to 960F. Then hold it for 90 minutes. Then ramp at 50F/hr to 800F. SKIP holding it. Then ramp at 100F/hr to 600F. Then turn it OFF and don't open the kiln until Room Temp (No Venting). Your Kiln Controller needs to be programmed in a series of steps. Each step has 3 attributes: C, T, Sv. Troubleshooting Within 3 seconds of turning controller ON duty cycle goes to 100% and Sv reads LARGE value. Your T1 should be set to room temp or slightly below. The Kiln Zone at i3 has made significant progress, but it's very broke and is preventing editing. As of July 1, about 25 people have taken Kiln Training and are authorized to run the kiln solo. The group has 10 public casting molds of various shapes on loan, and there are around 3 dozen Glass Frit colors owned by i3. A cash box will be started soon for their use, with costs estimated at \$2 per casting, including Boron Nitride use. The Kiln Zone is standardized to COE 96, but users are advised to contact the coordinator if they plan to use a non-standard COE. It's also recommended to change kiln paper every 2-4 firings and handle it carefully as it becomes powdery when used up. The group is petitioning for an extension of the fence by about 3 feet to accommodate Kiln 2, which is expected to be operational in September. The coordinator has reported some damage to the lower wall and heating element of Kiln 1, but it's been temporarily fixed. A HEPA shopvac is needed to remove kiln paper, and future plans include extending the fence, setting up a cash box, and installing an HEPA spray table. The current financial report shows that \$150 was spent on fencing in Q4 2012. The coordinator will accumulate information for August and present it in the first Member Meeting of the month. Kiln Zone Expansion is currently 1/2 complete, awaiting parts shipment with an expected completion date of September 30. Authorized users and trainers include Terry Wynn, certified in November 2012. A list of trainers can be found on the i3 website.