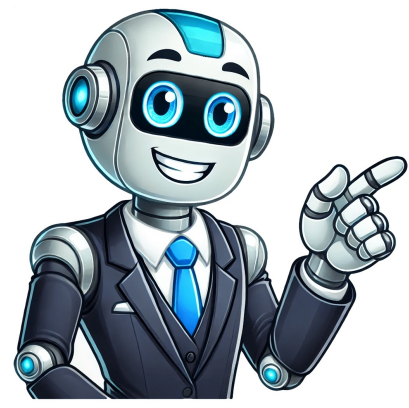


I'm not robot



Some wireless keyboards require a receiver to function, but there are devices that offer both Bluetooth and 2.4 GHz connectivity. This means you can still use your keyboard without the receiver in case it gets lost. Before we dive into the solutions, keep in mind that not all wireless keyboards support wireless connectivity without their designated receiver. Some may only support Bluetooth or wired connections. If your device supports both types of wireless connections, you can enable Bluetooth on your PC and connect to the keyboard. However, if your keyboard doesn't support Bluetooth, there are a few ways to still use it without a receiver. In this article, we'll explore some methods to connect wireless keyboards without a receiver. To start, check if your device supports both types of wireless connections. If it does, you can toggle between Bluetooth and 2.4 GHz connectivity using the keyboard's switch. However, not all devices support this feature. One way to use a wireless keyboard without a receiver is to pair it with your PC via Bluetooth. To do this, turn on the keyboard and set it to pairing mode. The light on the keyboard should start blinking. Then, go to Settings > Bluetooth & Devices, and select Add Device. Choose Bluetooth, and the keyboard should appear in the list. Pair the devices, and you're good to go. Note that using a wireless device without its receiver may result in some lag compared to when using a receiver. However, one advantage of this method is that it's compatible with many devices. Another option is to use a Unifying receiver, which can be used to pair up to six devices from Logitech or Dell. To check if your keyboard supports a universal USB receiver, look for an * sign on the outer part of the keyboard (for Logitech) or a chain icon (for Dell). If you don't see these icons, you can search online for your keyboard's name and model number to find out if it supports this feature. To use a Logitech Unifying receiver, simply connect it to your computer and follow the on-screen instructions. The Dell Universal Receiver is a unifying software that allows users to connect their wireless keyboards and mice to their computer. To use the Dell Universal Receiver, follow these steps: Insert the Universal receiver on your PC. Download and install the Dell Universal Receiver Control Panel from Dell's official support page. Run the receiver control panel and click "Add New Device." Turn off the keyboard using the slider and press and hold any key until the keyboard turns back on. Continue holding the key for three seconds, then click "Yes" to complete the pairing process. It's worth noting that some keyboards with wireless connectivity may also support wired connectivity. If your keyboard uses a micro USB or USB Type-C port, you can try using it with a USB to Micro USB or USB to USB Type C adapter. However, if the port is being used for charging, it will not work with the Dell Universal Receiver. Losing a wireless mouse connector can be frustrating, but there are solutions available. Most wireless mice come bundled with a tiny USB dongle that acts as the receiver for the wireless signals transmitted by the peripheral. Simply insert the dongle into your PC or laptop to establish the connection and start using the mouse seamlessly. Wireless mice use radiofrequency (RF) technology to transfer data at a quick speed. The transmitter is housed within the wireless mouse, while the receiver is attached to the computer via a USB 2.0 or USB 3.0 device. To get started with a wireless mouse, connect the receiver and install the necessary driver software, allowing your device to detect and install the necessary driver for smooth operation. The small USB receiver is designed to be easy to lose, but many manufacturers now include storage pockets within their mice to keep it secure. If you misplace the receiver, consider purchasing a unifying wireless connector from companies like Logitech online or checking if your mouse's brand sells standalone connectors. Some wireless mice come with built-in Bluetooth support, eliminating the need for a separate dongle, while others require one, especially if your laptop or desktop PC lacks built-in connectivity. It's essential to note that using a wireless mouse may monopolize your device's Bluetooth support, limiting your ability to connect other devices. In contrast, a dedicated receiver creates a separate connection lane, preserving the availability of built-in Bluetooth functionality. The key advantage of smaller receivers is their ease of setup and minimal disruption to daily use, making them a convenient choice for many users. The wireless mouse receiver plays a crucial role in the functionality of the device, with each model having its unique frequency to minimize interference and ensure secure connectivity. In offices, where multiple employees use the same wireless mice, different receivers are essential for avoiding signal overlap. The Logitech M510 Wireless Mouse uses a USB Unifying Receiver, which can be reconfigured to work with other Logitech devices or paired with a replacement receiver if lost. For users of non-Logitech wireless mice, replacing the receiver may not be an option, forcing them to purchase a new mouse. Logitech's Unifying receivers, however, offer flexibility and convenience. These receivers use Logitech Unifying Software to connect multiple peripherals to one system, making it ideal for those who want to simplify their wireless setup. Using a unifying receiver has several benefits, including the ability to control multiple devices from a single USB connection, which is particularly useful in offices. Additionally, many unifying receivers can connect up to 6 wireless devices, allowing users to expand their setup without purchasing separate adapters. Logitech's unifying receivers also offer software upgrades and security patches, ensuring that users have access to the latest technology and protection against security threats. Looking for an easy way to declutter your workspace? Consider a wireless mouse that uses a unifying USB receiver. This compact device frees up space and eliminates cables, making it perfect for those who want to simplify their computing experience. Unlike wired mice, wireless mice don't require a cord, making them convenient to use on the go. The battery is only active when needed, conserving power. However, it's essential to note that different receivers have limited range, typically up to 30 feet. To avoid compatibility issues, manufacturers pre-pair each device with unique frequencies. This means you won't experience interference from other devices using the same frequency. Bluetooth mice, on the other hand, use the standard 2.4GHz band and employ frequency bouncing to minimize disruptions. Some laptops come equipped with built-in receivers for Bluetooth mice, eliminating the need for an additional receiver. If your mouse doesn't support a unifying receiver, you may be able to replace the USB port or purchase a new mouse. However, some wireless mice don't require a receiver at all and come with their own set of drawbacks. Before making a purchase, research compatibility issues and ensure you're getting the right device for your needs. If you've lost the connector that came with your wireless mouse, you'll have no choice but to buy a new one. Hopefully, this guide has helped answer what to do if you lose your USB receiver for wireless mouse. You might be able to find some workarounds, like using a unifying receiver if your Logitech mouse is compatible. But if you've got a cheap mouse, there's not much chance of finding a replacement wireless mouse receiver that'll work with it - so buying a new one is your only option. If your mouse is Bluetooth-enabled, you can connect it to your laptop or PC using the built-in Bluetooth support. Alternatively, if your device doesn't have Bluetooth, you can use a Bluetooth dongle to connect the mouse. However, if you've recently bought a Logitech wireless keyboard and lost the receiver, don't worry - we've got you covered! In this article, we'll explore three methods for connecting your Logitech Wireless Keyboard K270 without a receiver. Whether you're using Bluetooth connectivity, Logitech Unifying Software, or a compatible Logitech receiver, rest assured that you can keep typing wirelessly. The Logitech Wireless Keyboard K270 is known for its reliability and durability, making it an excellent choice for both work and play. But what if you lose the receiver that came with your keyboard? It might seem like your wireless keyboard is useless, but fear not! Logitech has got various methods to help you connect it without the receiver. So, let's dive into these three methods that'll get you back to typing in no time - whether you need to connect your keyboard to a computer, laptop, or even a mobile device. Method 1: Using Bluetooth Connectivity If your computer or device has Bluetooth technology, you can easily connect your Logitech Wireless Keyboard K270 without the need for a receiver. Here's how: - Make sure Bluetooth is enabled on your computer or device - usually found in the settings menu or system tray. - Turn on your keyboard by sliding the power switch to the "On" position. - Press and hold the Bluetooth button until the light starts blinking, indicating that the keyboard is ready to be paired with your computer or device. - Access the Bluetooth settings on your computer or device, search for available devices, and select the Logitech Wireless Keyboard K270 from the list. Follow the on-screen instructions to complete the pairing process for your Logitech Wireless Keyboard K270. Once paired, the Bluetooth light will stop blinking and remain solid, allowing you to use your keyboard wirelessly. This method provides convenience by eliminating the need for a separate receiver, enabling connectivity with various devices such as computers, laptops, tablets, and smartphones that have Bluetooth capabilities. However, not all devices support Bluetooth, so alternative methods may be necessary. You can also use Logitech Unifying Software to establish a connection without a receiver. To do this, download and install the software from the official Logitech website, then follow these steps: insert the Unifying receiver into an available USB port, turn on your keyboard, click "Add Devices" in the software, and pair your keyboard with the receiver by pressing a specific key combination. Alternatively, if you have a compatible Logitech receiver, you can connect to it using Method 3. This method simplifies the process of connecting and managing Logitech devices, allowing for a seamless experience and eliminating the need for an extra receiver. Connect your Logitech Wireless Keyboard K270 by following these easy steps. First, make sure the Logitech receiver you're using is compatible with the keyboard - check for the Unifying logo or visit Logitech's website for info. Plug in the receiver and turn on the keyboard by flipping a switch. Press buttons on both the receiver and the keyboard to sync them up, then wait a sec while they establish a connection. If you've got other Logitech devices, using this method can be super convenient - just make sure your receiver is compatible with the keyboard. Don't have a compatible receiver? No worries! Just check out other methods mentioned earlier. If you're having trouble connecting, try checking battery power and making sure there's no interference from other devices. Sometimes a restart or updating drivers and software can fix issues too. If the connection still won't establish itself, it's probably time to seek out some extra help. If after trying all of these troubleshooting steps your Logitech Wireless Keyboard K270 is still not connecting wirelessly without a reciever, maybe reaching out to Logitech customer support will give you the boost you need. You should be able to get past most common issues with a bit of persistence and patience, and find yourself typing away on your keyboard in no time. The good news is that there are several ways to connect your wireless keyboard, so you can pick the one that best suits your needs. One popular option is Bluetooth connectivity, which lets you pair up with all sorts of devices like computers, laptops, tablets, or smartphones as long as they've got Bluetooth capabilities. This makes it super handy for typing on-the-go. Another great choice if your keyboard supports Logitech Unifying technology is the Logitech Unifying Software. This lets you connect multiple devices to a single receiver, which can really declutter your workspace and make things easier to manage. If you already have another compatible Logitech device with a receiver that you can use for this purpose, then that's a great option too. It means you won't need as many receivers connected up to your computer, which is always a plus. Just remember if any issues come up while trying to connect, there are some common problems like dead batteries or interference that you might want to check out first. And if all else fails, don't be afraid to reach out for help - either by consulting the user manual or contacting Logitech support. With a bit of persistence and the right tools at your disposal, you should be back to typing away in no time!

Connect wireless keyboard to laptop without receiver. Can i use wireless keyboard without receiver. How to connect wireless keyboard and mouse without dongle. Как подключить wireless mouse к ноутбуку. How to connect hp wireless keyboard and mouse without receiver. How to connect wireless mouse and keyboard to laptop without receiver. How to connect wireless keyboard without usb receiver. How to connect logitech wireless keyboard and mouse without receiver. How to connect dell wireless keyboard and mouse without receiver. How to connect wireless mouse and keyboard without usb receiver.