

PRODUCT: Q2-KEL294724S

WEIGHT: 1.638 lbs.  
(CUSTOMER TO OFFLOAD IF OVER 6000 Lbs.)

Authorized Signature

Date

By signing above or stamping this drawing "approved" or "no exception taken" authorization is given to QCP to produce this drawing as shown within a 1/4" tolerance.

CONCRETE COLOR:

- ☐ NATURAL ☐ FRENCH GREY  
☐ MISSION WHITE ☐ LATTE  
☐ CUSTOM: \_\_\_\_\_

CONCRETE TEXTURE:

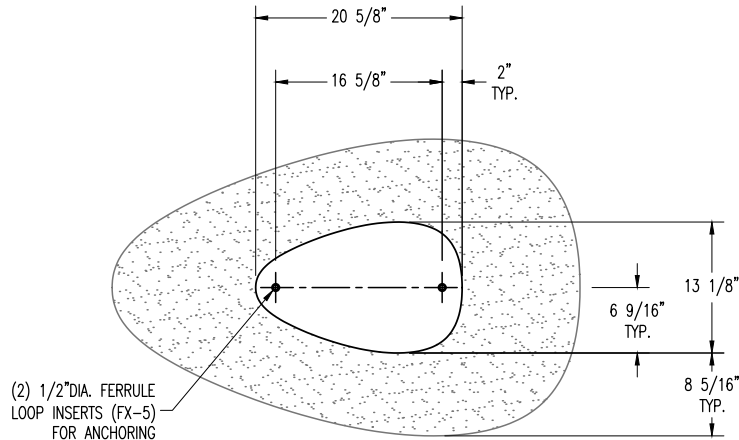
- ☐ CRAFTSMANS ETCH  
☐ STRATA

QUANTITY: \_\_\_\_\_

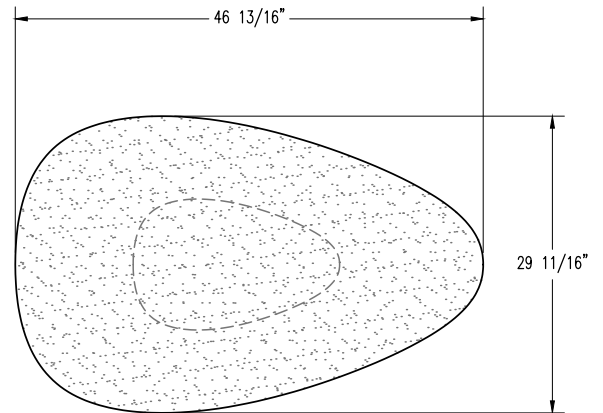
SEALER: PERMASHIELD 4200 SEALER

GENERAL PRODUCT NOTES:

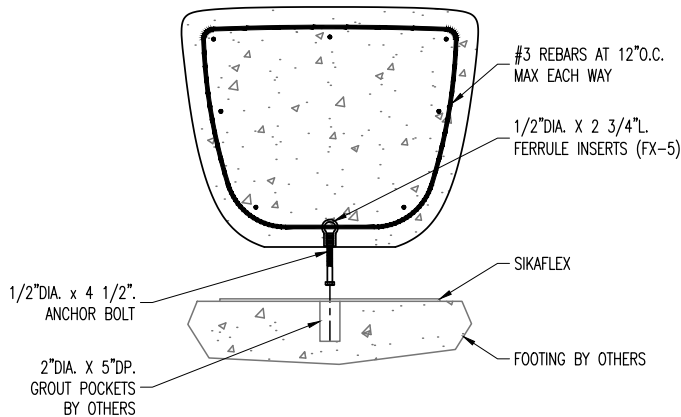
E = EXPOSED FINISHED SURFACE  
INSTALLATION IS REQUIRED BY OTHERS.  
ALL EDGES TO BE EASED.  
MANUFACTURING TOLERANCE  $\pm 1/4"$ .



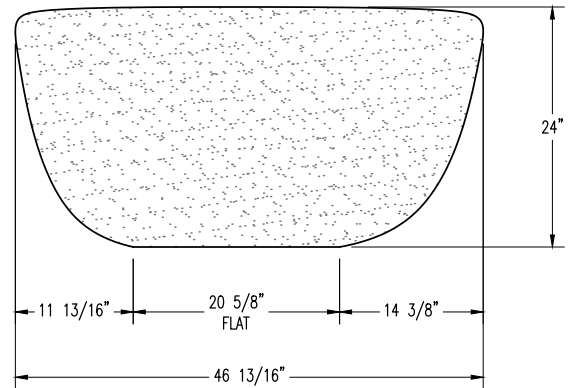
BOTTOM VIEW



PLAN VIEW



SECTION VIEW



ELEVATION VIEW

HARDWARE LIST

QTY	TYPE
2	1/2"DIA. x 4 1/2"L. ANCHOR BOLT
1	SIKAFLEX

**QCP**  
www.qcp-corp.com

PLAN TYPE

CONSTRUCTION PLAN

PRODUCT

Q2-KEL294724S | SEATING | KERNEL

PROJECT NAME

DATE

1/24/25

SCALE

5/8" = 1'

PC. NO.

FILE NO.

Q2-KEL294724S

DRAWN BY:

----

QC ITEM NO.

SHEET

1

OF

1