



SABAH INTERNATIONAL
CONVENTION CENTRE

SABAH INTERNATIONAL CONVENTION CENTRE

Experience EXCEPTIONAL
SABAH NATURE & CULTURE

www.siccsabah.com



f i d X in @siccsabah

sales@siccsabah.com

Tanjung Lipat, Jalan Tun Fuad Stephens, 88400 Kota Kinabalu, Sabah, Malaysia



+6088 206 000



Sabah, a Malaysian state nestled in the northern part of the island of Borneo, is a captivating blend of natural wonders, cultural richness, and vibrant diversity. Its lush rainforests, pristine beaches, and towering mountains make it a paradise for nature enthusiasts and adventure seekers alike.

The state boasts an incredible array of flora and fauna, including the rare orangutans, pygmy elephants, and the world's largest flower, the Rafflesia. Visitors can explore the depths of the ocean in the renowned diving spots of Sipadan Island or trek through the dense jungles of Danum Valley Conservation Area to witness the breathtaking beauty of untouched wilderness.

Sabah's cultural tapestry is equally captivating, with a rich heritage shaped by indigenous tribes such as the Kadazan-Dusun, Murut, Bajau and Rungus. Traditional longhouses, colorful festivals like the Kaamatan and Pesta Regatta, and mouthwatering culinary delights reflect the state's cultural diversity and warmth.

Sabah's modern infrastructure, including the bustling city of Kota Kinabalu as well as the state-of-the-art Sabah International Convention Centre, positions it as a dynamic hub for business and leisure. Whether it's exploring its natural wonders, immersing oneself in its vibrant culture, or indulging in its culinary delights, Sabah promises an unforgettable experience for every traveler.



STRATEGIC DESTINATION WITHIN THE ASIA PACIFIC REGION

The flight duration to Kota Kinabalu International Airport in Sabah, Malaysia, typically ranges from 2 to 6 hours.

Kota Kinabalu can be conveniently reached with direct international flights, or via a connecting flight through Kuala Lumpur, which takes approximately 2.5 hours.



WELCOME TO KOTA KINABALU, SABAH, MALAYSIA



MOUNT KINABALU

"Explore the Enchanting Wonders: Must-See Destinations in Sabah Malaysia Borneo"

Welcome to Sabah, a captivating destination nestled in the heart of Malaysian Borneo. Sabah beckons travelers with its kaleidoscope of natural wonders, from majestic mountains to pristine islands, and invites exploration of its rich cultural heritage. Whether you're an adventure seeker, a nature enthusiast, or a cultural aficionado, Sabah offers a diverse array of experiences that promise to enchant and inspire. Join us on a journey as we explore some of the must-visit places in Sabah, where every moment is a discovery waiting to unfold.



MALIAU BASIN, SABAH'S LOST WORLD

Sabah, a jewel of Borneo, beckons adventurers with its diverse landscapes and rich cultural tapestry. Kinabalu Park, a UNESCO World Heritage Site, unveils the majestic Mount Kinabalu, Southeast Asia's highest peak. Venture deeper into nature's embrace with Maliau Basin, Sabah's Lost World, showcasing pristine rainforests and rare wildlife.



SUNSET AT KOTA KINABALU

For an immersion into biodiversity, Danum Valley Conservation Area and Imbak Canyon Conservation Area offer unparalleled experiences. Dive enthusiasts flock to Sipadan, a top 10 world-best dive site, for its vibrant underwater ecosystem.

Explore into Sabah's cultural heritage at a traditional village, where local customs and crafts come alive. As day fades, witness the spectacular sunset of Borneo, painting the sky with hues of gold and crimson. Sabah's allure lies not just in its natural wonders, but also in the warmth of its people and the stories etched in its landscapes, inviting travellers to explore and cherish its treasures.



CULTURAL VILLAGE



SIPADAN, TOP 10 WORLD BEST DIVE SITE

ABOUT

SABAH INTERNATIONAL CONVENTION CENTRE

Established in 2020, Sabah International Convention Centre (SICC) is centrally located in Kota Kinabalu's dynamic Central Business District, a mere 20-minute drive from Kota Kinabalu International Airport. Surrounded by an array of hotels, shopping complexes, and entertainment venues, it offers diverse dining options, from local delicacies to Western fare.

Exuding Sabah's natural allure through its architecture, SICC affords stunning vistas of Mount Kinabalu and the South China Sea. It embodies Sabah's cultural richness, fostering intellectual exchange and local talent development.

SICC serves as a hub for global collaboration and knowledge dissemination, facilitating connections among leaders, innovators, and policymakers across sectors. Its strategic positioning enables delegates to explore the city's cultural attractions and pristine landscapes, enriching their convention experience.

As a beacon of progress, unity, and cultural harmony, the Sabah International Convention Centre epitomizes Sabah's commitment to global engagement and sustainable development.



THE BRANDLAUREATE
Sustainable Business & Brands
Inspirational Achievement
Awards 2022-2023



**ASEAN MICE
VENUE STANDARD**
Category Meeting Room 2024 - 2026
Category Exhibition Venue 2024 - 2026



ASEANTA
ASEAN TOURISM ASSOCIATION
BEST ASEAN
CONVENTION CENTRE
2025



MINISTRY OF TOURISM, ARTS & CULTURE
MALAYSIA
**ASEAN MICE VENUE STANDARD
NATIONAL LEVEL**
Category Meeting Room 2024 - 2026
Category Exhibition Venue 2024 - 2026



The BrandLaureate
BestBrand Award for Nation's Pride in
International Convention Centre
2023-2024





VISION

SICC will be a **leading driver of Sabah's economic transformation** across all key sectors through Business Events

MISSION

To make SICC as the **choice venue** for Business Events in the Asia Pacific region

BE THE CHANGE

Sustainability

Environmental, Social, and Governance (ESG)



Dedicated to minimizing waste through the 3R's principles: Reduce, Reuse, Recycle



Recycling Centre on Level 1 segregates dry waste like paper, cardboard, metal, aluminium, plastic, and used cooking oil for recycling



Commitment to phasing out single-use plastics, replacing them with eco-friendly alternatives like paper straws, bags, cups, and stirrers



Installed water stations throughout the premises to promote the use of refillable bottles and reduce single-use plastic bottle waste.



Promotion of paperless transactions through e-payment services to lower carbon footprints



Utilisation of a Building Management System (BMS) to monitor and control HVAC, lighting, security, and energy usage.



Prioritisation of locally sourced and sustainably produced food, beverages, and event supplies to support local economies and reduce transportation-related environmental impact.



SABAH INTERNATIONAL CONVENTION CENTRE ROOTED IN NATURE



Discover the essence of Sabah Wetland's mangrove forest as you step into the Level 2 foyer, where abstract representations of aerial roots and buttressed trunks adorn the walls and columns. With subdued lighting and dark carpeting, immerse yourself in the serene ambiance reminiscent of the mangals.

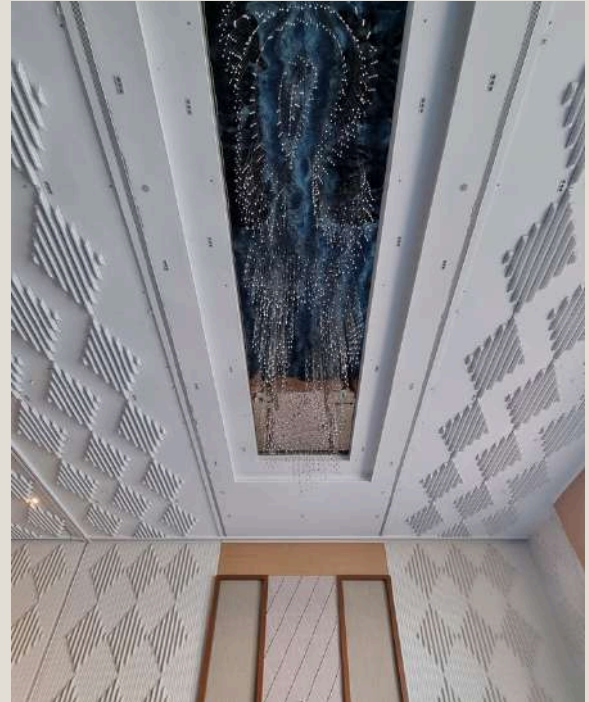


LEVEL 3

SICC pays homage to the pride of Sabahan, Mount Kinabalu, with the mountain's jagged peak and slate features on the columns and marble floor. The play of the different shades of polished granite draws its inspirations from the various depth and body of the geological formation formed over 10 million of years.

Sabah is the proud home to the rare and exotic, most expensive orchids in the world – Rothchild's Slipper Orchid, which are seen on the ceiling of the lobby. Locally known as Sumazau Orchid, the long sweeping side petals of the flower resembles the outspread arms of the Sumazau dancer, a popular traditional dance of Sabah.

As this orchid is also nicknamed as the Gold of Kinabalu, the ceiling when illuminated emits a "gold" outline of the elegant orchid.



Sabah International Convention Centre (SICC) brings the outdoor inside, through creative integration of nature in its interior décor. These visual connections are built into spaces inside the Convention Centre to allow guests to connect to the natural world, stimulating cognitive functionality and performances

Discover the essence of Sabah Wetland's mangrove forest as you step into the Level 2 foyer, where abstract representations of aerial roots and buttressed trunks adorn the walls and columns. With subdued lighting and dark carpeting, immerse yourself in the serene ambiance reminiscent of the mangals.

Transitioning to Level 4, the pre-function foyer pays homage to the tranquil cruises along the Kinabatangan River, evoking the atmosphere of the surrounding nipa palm swamp with its inspired carpet design.

As you enter the Convention Hall, be transported to the vibrant marine world. The carpet, alive with hues mirroring the sea's depths, stretches towards floor-to-ceiling windows, framing breathtaking views of the ocean and Gaya Island. Above, the ceiling's abstracts mimic gentle waves, while the walls capture the warmth of sandy beaches.

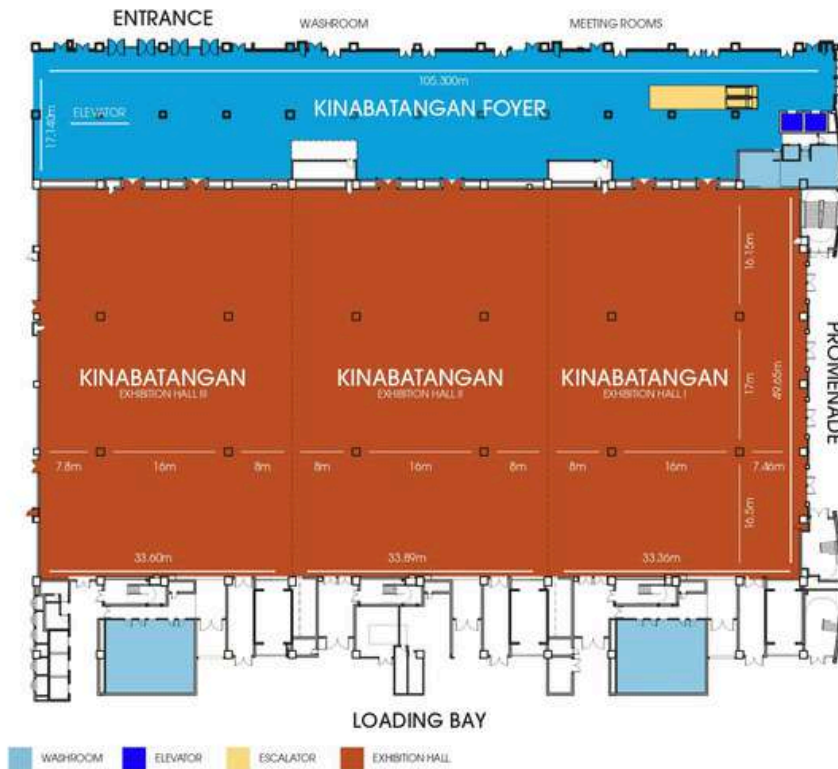
Adding a touch of local culture, the acoustic walls feature geometric patterns inspired by the Rungus rhythmic weave, known as "Mangavol". This intricate motif, reflecting the region's rich flora and fauna, showcases the craftsmanship of the indigenous tribe.



QUICK GUIDE

LEVEL 2

KINABATANGAN EXHIBITION HALL



5,007.45sqm
can be subdivided
into 3 smaller spaces

The hall ceiling height is
at 11 metres

Direct access to
loading docks

28 exhibition booths
inside the hall

90 exhibition booths at
the foyer

PRE-FUNCTION FOYER



6 meeting rooms
from 44sqm to 114sqm

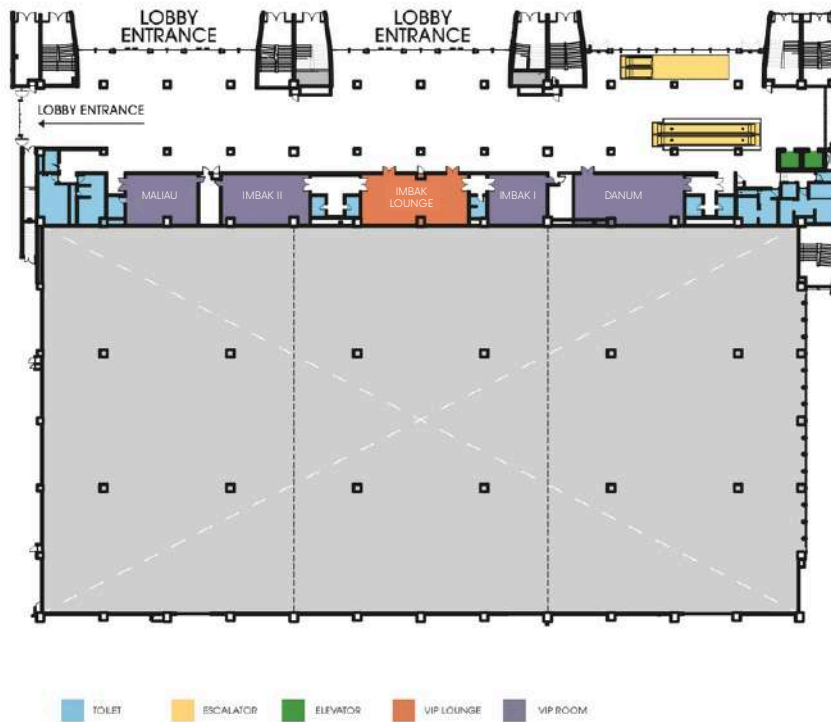
Silam VIP Lounge

Promenade can
accommodate cocktail
of 800 persons,
overlooking the sunset

QUICK GUIDE

LEVEL 3

VVIP LOUNGES AND ROOMS

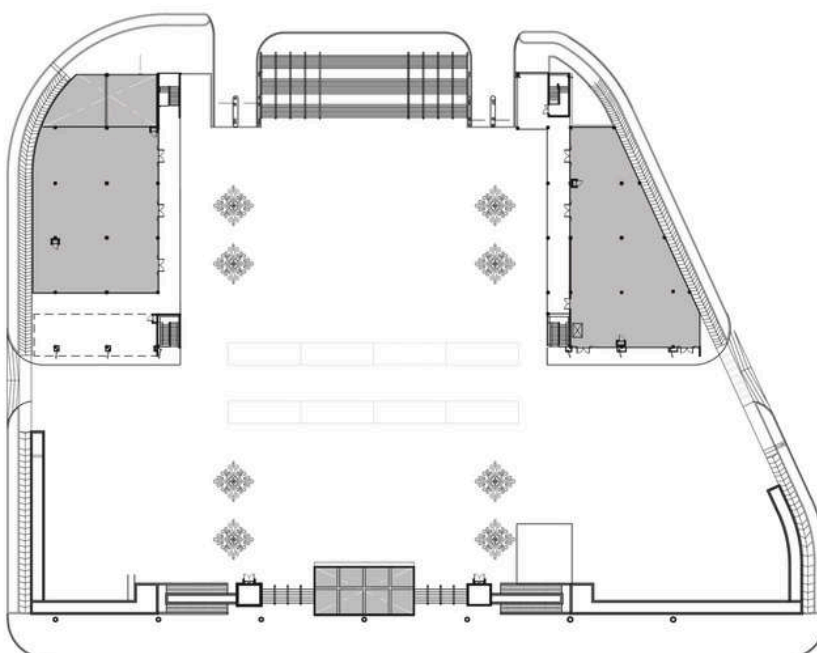


Private VVIP entrance

Lounges and rooms can be used as VIP Holding Room, private meeting rooms

Danum can be converted into a bedroom with shower facilities

JESSELTON SQUARE

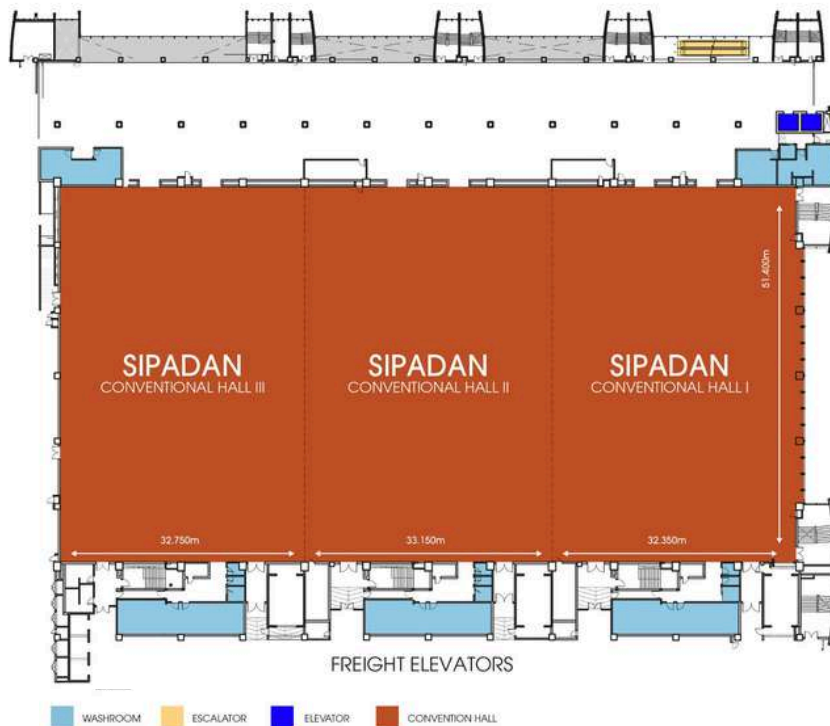


The 6,954sqm outdoor plaza fits up to 7,000 guests at one time

QUICK GUIDE

LEVEL 4

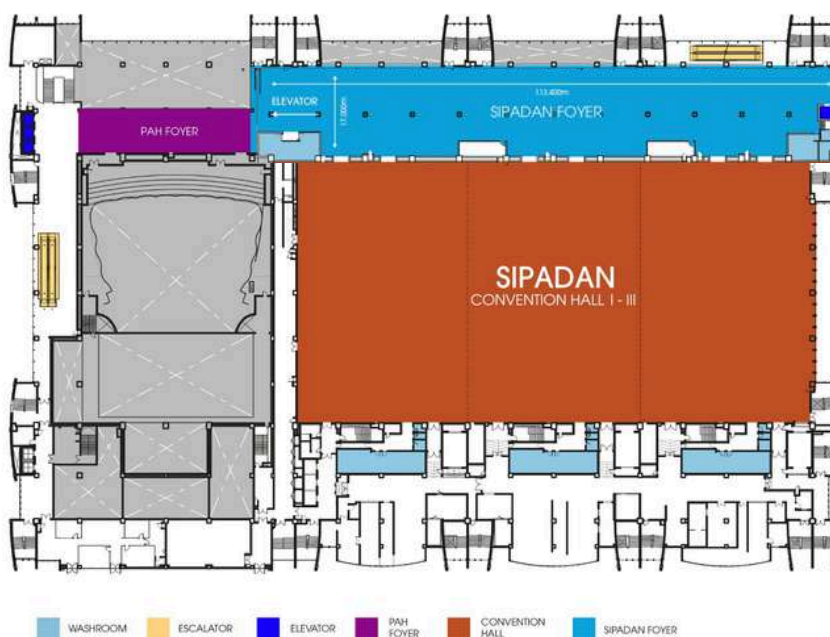
SIPADAN CONVENTION HALL



5,050.05sqm
can be subdivided
into
3 smaller spaces

The hall ceiling height
is at 15 metres

PRE-FUNCTION FOYER



The 1,911sqm Sipadan
foyer accommodates
up to 1,500 guests for
cocktail receptions

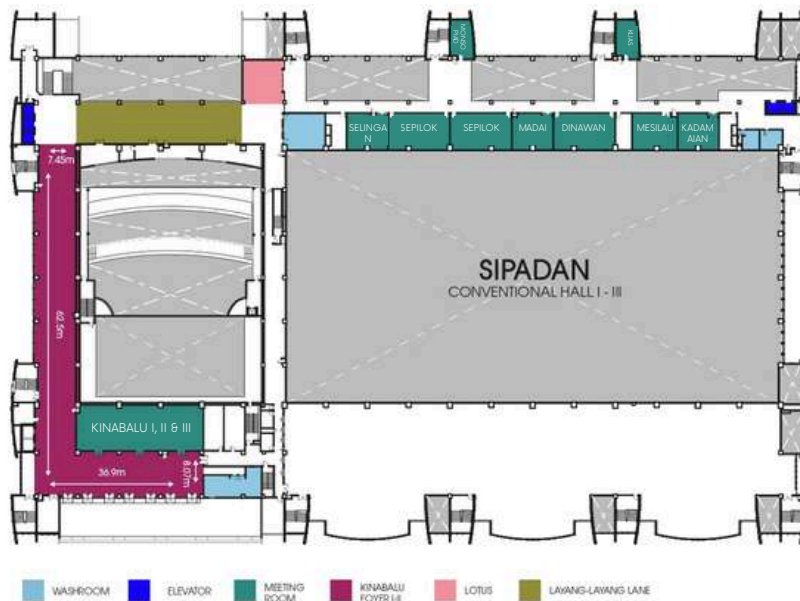
92 exhibition booths at
the Sipadan Foyer

PAH Foyer can
accommodate 200
banquet seating

QUICK GUIDE

LEVEL 5

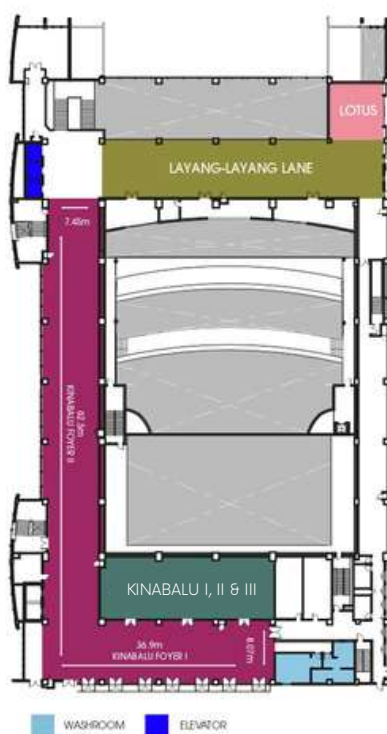
FUNCTION ROOMS



13 private meeting rooms ranging from 32sqm to 223sqm

KINABALU ROOM & SEPILOK ROOM
Fixed LED Screen
4.5m x 2.5m

PRE-FUNCTION FOYER



Kinabalu Foyer I can accommodate 180 banquet seating

18 exhibition booths at the Kinabalu Foyer II

Layang Layang Lane can accommodate 160 banquet seating

Lotus accommodate 40 banquet seating

SABAH INTERNATIONAL CONVENTION CENTRE Capacities of space rental areas are indicators only, and is dependent on stage requirements and decorations of venue

SABAH INTERNATIONAL CONVENTION CENTRE

Room	Length		Width		Gross area		Banquet	Cluster	Classroom	Theatre	U-shape	Board Room	Booth Capacity	Cocktail
	m		m		sqm	sqft								
LEVEL 2 EXHIBITION HALLS, MEETING ROOMS & VIP LOUNGE														
Kinabatangan Foyer	17.140		105.300		1,804.84	19,427.14							28	1,500
Kinabatangan I	49.650		33.365		1,721.97	18,535.13	950	760	600	1,200	700	700	90	1,500
Kinabatangan II	49.650		33.890		1,749.90	18,830.38	950	760	600	1,200	700	700	90	1,500
Kinabatangan III	49.650		33.600		1,746.53	18,799.49	950	760	600	1,200	700	700	90	1,500
Kinabatangan I - III	49.650		100.855		5,007.45	53,899.74	3,500	2,240	1,800	6,000	234	232	300	4,800
201 Marukan	12.514		9.331		116.77	1,256.90	60	60	60	100	30	36		
202 Kapalai	12.282		9.322		114.49	1,232.36	60	60	60	100	30	36		
Kapalai & Marukan	12.282		18.653		231.26	2,489.26	120	120	120	200		70		
203 Mabul	11.815		9.145		108.05	1,163.04					35			
204 Maraling	11.965		9.328		111.60	1,201.25	60	60	50	100	30	30		
205 Balambangan	9.325		8.375		78.10	840.66	40	40	36	60	27	18		
Slam Lounge (VIP Lounge)	16.368		9.237		151.19	1,627.40	80/40			30	15	18		
Slam Foyer	42.400		13.900		589.36	6,343.82	150							80
Promenade	105						400							1,000

LEVEL 3 MAIN LOBBY, OPEN PLAZA, PERFORMING ARTS HALL (P-A-H), VVIP ROOM & VIP LOUNGES												
Jessellton Square (Open Plaza)			6,954.00	74,852.23	1,500						180	
R1 Darum (VIP Room)	14.650	5.950	87.168	938.27	50	50	30	50	20	23		
R2 Intak I (VIP Room)	9.700	6.550	63.535	683.89	20	20	18	20	15	18		
L1 Intak Lounge (VIP Lounge)	14.175	6.060	85.901	924.63	50	50		30				
R3 Intak II (VIP Room)	11.580	5.520	63.922	688.05	40	40	18	40	27	30		
R4 Mabau (VIP Room)	9.400	6.490	61.006	656.66	20							

LEVEL 4 CONVENTION HALLS												
Spandan Foyer	17.000	113.400	1,927.80	20,750.67	400							
Spandan I	51.400	32.350	1,662.79	17,898.12	900	760	800	1,200	80	700	92	1,500
Spandan II	51.400	33.150	1,703.91	18,340.73	900	760	800	1,200	80	700	92	1,500
Spandan III	51.400	32.750	1,683.35	18,119.43	900	760	800	1,200	80	700	92	1,500
Spandan I - III	51.400	98.250	5,050.05	54,358.29	3,500	3,500	2,000	7,000	240	2,100	276	4,800
PAH Foyer	48.650	8.160	396.98	4,273.06	300	240		300				150

LEVEL 5 MEETING ROOMS & EXECUTIVE MEETING SUITE												
501 Kadamalan	8.357	7.480	62.51	672.85	30	21	24	50	15	18		
502 Meliau	9.236	7.481	69.09	743.48	40	21	24	50	21	24		
503 Dinawan	12.540	7.491	93.94	1,011.16	60	42	36	60	30	30		
504 Madal	8.525	6.692	57.05	614.08	30	21	24	42	15	18		
505 Sepelok	25.160	7.500	188.70	2,031.15	100	60	54	120	54	60		
506 Selangan	8.347	6.579	54.91	591.05	20	16	24	30	15	18		
507 Montopiad	7.195	4.695	33.78	363.80	20	16	24	30	9	18		
508 Kila	7.316	4.660	34.09	366.94	20	16	24	30	9	18		
509 Kinabalu I	8.518	8.750	74.53	802.23	40	28	24	40	20	24		30
510 Kinabalu II	8.518	8.540	72.74	782.97	40	28	24	40	20	24		30
511 Kinabalu III	8.518	8.750	74.53	802.23	20	16	16	20	20	24		20
Kinabalu Hill	8.518	26.04	221.80	2,387.44	120	80	100	180	60	66		100
Kinabalu Foyer I	36.900	8.070	297.78	3,205.28	180	112	80	180	40	4	4	150
Kinabalu Foyer II	62.500	7.454	465.87	5,014.64	200	160	120	500			15	200
Lulus	17.750	7.760	137.74	1,482.62	40							32
Layang-Layang Lane	50.700	8.255	418.53	4,505.02	200							150
Rafflesia	7.742	8.352	64.66	695.99	20	20	24	40				

WHAT'S YOUR MEETING STYLE?

A good meeting room will help you to run your meetings better as you are less likely to be interrupted or distracted due to the lack of certain necessities. With a fully equipped meeting room, or even better, assigned banquet personnel, you can focus on your agenda.



THEATRE

Good visual to stage. Maximises the number of people in a venue. Limited movement and interaction between guests



U-SHAPE

Good view to presentations. Allows interaction between facilitator and guests. Seating capacity is reduced.



CLASSROOM

Good viewpoint of the stage. Allows note taking and dining. Limited interaction between guests.



BOARDROOM

Good for discussions between guests, conducive to sharing tasks. Restricted view of stage



CLUSTER

Seats can be of varying amounts. Good for programmes with a lot of group work and interaction with facilitator. Allows note taking and dining. Guests are closed in.

We also love creative and innovative meeting set up! Talk to us, and let's make it happen.

CORPORATE & ASSOCIATION

Nazlia +6016 818 4820
Marie +6012 684 8802

GOVERNMENT

Nora +6016 820 0988
Nurul Hidayatul +6016 823 3878

Email: sales@siccsabah.com

SABAH INTERNATIONAL CONVENTION CENTRE

FACILITIES



DAY DINING CAFE



>1,000 PARKING
BAYS + 12 HANDICAP
PARKINGS



2 PRAYER ROOMS
(SURAU) @LEVEL 2



HIGH TECH AUDIO
VISUALS + FULL
CONFERENCE
FACILITIES



DIRECT ACCESS
FROM TWO-LEVEL
CARPARK



24 HOUR IN-HOUSE
SECURITY



WHEELCHAIR
ACCESSIBLE ELEVATOR
+ RESTROOMS



HIGH-SPEED,
COMPLIMENTARY WIFI



STAY OPTIONS - 5 STAR
HOTELS & RESORTS,
AIRBNB



CHARGING STATIONS
& USB PORTS AT THE
FOYER



WATER REFILL STATION

CULINARY



A team of culinary experts, trained worldwide, along with service professionals, will craft unforgettable cuisines and ensure outstanding venue experiences for your guests. Our menus, blending local and continental flavors, feature ingredients sourced locally—fresh from the farm—to support regional agriculture and sustainability.

As the exclusive catering provider at the Sabah International Convention Centre, we operate banquet kitchens certified for Halal standards. This guarantees our Muslim guests that all their banquet needs adhere strictly to Halal requirements.



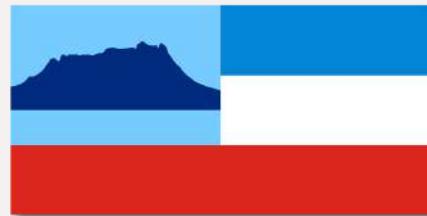
EVENTS AT SICC



 **LOCATION**
5.4204° N, 116.7968° E

 **GPS COORDINATES**
5° 25' 13.4544" N
116° 47' 48.4188" E

 **IATA CODE:** BKI



POPULATION: 3.6 million

Source: Department of Statistics, Malaysia, 2023

LANGUAGES

Bahasa Malaysia (National Language) | English | Chinese dialects

RELIGION

Islam | Christianity | Buddhism | Others



CLIMATE

Sabah has an equatorial/tropical climate.

- Rainy season typically happens from October to March.
- Average temperatures is around 30 – 32 °C



CURRENCY

MYR Ringgit Malaysia (RM)

- E-wallets and Credit Cards are widely accepted



ECONOMY

Agriculture | Tourism | Manufacturing



MOST EXPORTED COMMODITY

Palm oil & Petroleum

IMPORTANT AGRICULTURE ACTIVITY

Rubber, cocoa and coconut oil



TOURISM

Eco-tourism supported by the Ministry of Tourism, Culture & Environment



TIME ZONE

8 hours ahead of Greenwich Mean Time (GMT+8)



ELECTRICITY AND POWERPOINT PLUG TYPE

230V 50Hz (British Plug / Type G Plug)



TRANSPORTATION

Public buses, boat, train, taxi and e-hailing services are also available



MALAYSIA COUNTRY CODE +60

AREA CODE FOR KOTA KINABALU: 88

EMERGENCY CALL CENTRE : 999



ENTRY FORMALITIES

All foreign visitors travelling to Malaysia must complete the Malaysia Digital Arrival Card (MDAC)



SCAN HERE FOR

Malaysia Digital Arrival Card (MDAC)



VISITOR INFORMATION

SABAH TOURISM BOARD

51, Gaya Street

88000 Kota Kinabalu

www.sabahtourism.com

+6088 212 212