

# Axis 1/8" Orifice Mini Hard Seat Valves

---

 [AXISMEASUREMENT.COM](https://axismeasurement.com)



**Valves**

---

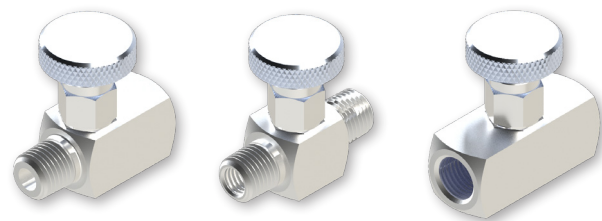
Catalog number: AX2MN6H Rev. 1  
March, 2025

**AXIS**   
MEASUREMENT

# Axis 1/8" Orifice Mini Hard Seat Valves

## Description

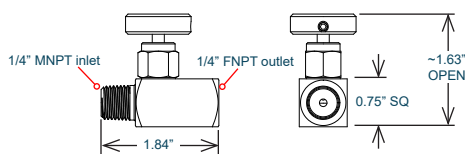
The SS-VV valves feature an O-ring design below the threads, blowout proof stem, a cone tip of the stem, and the integral hard seat from the valve body. The pressure rating is up to 6000 PSIG. The valves are available with FNPT and MNPT inlet, outlet connections and round knurled handle for easy operation.



## Features and Benefits:

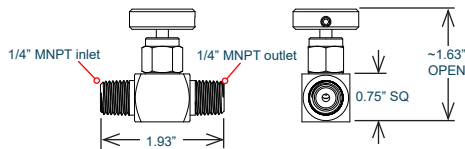
- 100% testing ensures blow out proof stem and seat tightness
- O-ring packing below stem threads prevents corrosion
- Stem threads formed by rolling provide improved strength and smooth operation
- Stem cone tip and integral seat forms a globe pattern seal to ensure zero leakage at shutoff
- Pressure rating is up to 6000 PSIG
- Bodies and bonnets are lot code stamped to provide full material traceability

### Male NPT x Female NPT Configuration



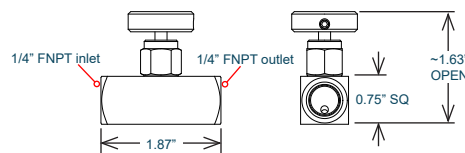
Specification	
Model	AX2MN6H4M4PXX
Orifice	1/8"
Rating	6000 psi at 100°F, 414 bar at 38°C
Seat	Hard seat, integral with body
Packing	O-ring, FEPM, or, FKM
Inlet	1/4" male NPT
Outlet	1/4" female NPT

### Male NPT x Male NPT Configuration



Specification	
Model	AX2MN6H4M4MXX
Orifice	1/8"
Rating	6000 psi at 100°F, 414 bar at 38°C
Seat	Hard seat, integral with body
Packing	O-ring, FEPM, or, FKM
Inlet	1/4" male NPT
Outlet	1/4" male NPT

### Female NPT x Female NPT Configuration



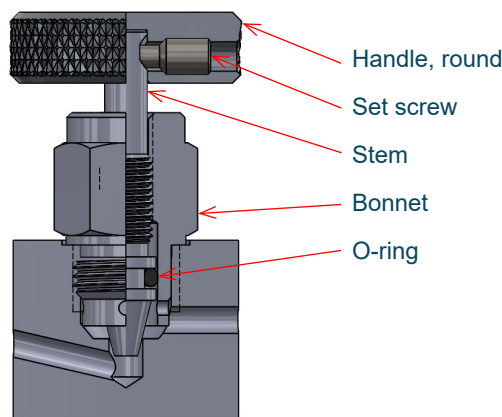
Specification	
Model	AX2MN6H4P4PXX
Orifice	1/8"
Rating	6000 psi at 100°F, 414 bar at 38°C
Seat	Hard seat, integral with body
Packing	O-ring, FEPM, or, FKM
Inlet	1/4" female NPT
Outlet	1/4" female NPT

### Packing (O-ring) Temperature Rating

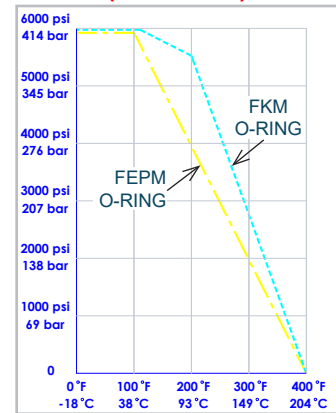
Code	Component	Material	Minimum Temperature	Maximum Temperature
A	O-ring	FEPM	-4°F [-20°C]	400°F [204°C]
V	O-ring	FKM	-15°F [-26°C]	400°F [204°C]

# Axis 1/8" Orifice Mini Hard Seat Valves

## 1/8" Bore Bonnet Configuration



Pressure vs. Temperature Chart  
(Hard Seat)



Note: soft seat material ratings are based on manufacturers' specifications, for reference only.

## Product Numbering

Brand	Orifice	Type	Inlet Size	Inlet Type	Outlet Size	Outlet Type	Material	Packing	Seat	Option
AX	2 1/8"	MN6H Mini hard seat valve	4 1/4"	M Male NPT	4 1/4"	M Male NPT	SS ASTM A182 Gr. 316	A O-ring FEPM	Integral with valve body	TG 304 SS TAG (note 1)
				P Female NPT		P Female NPT	CS ASTM A105 (Zinc plated)	V O-ring FKM		

Example: model number **AX2MN6H4M4PSS** is interpreted as,  
Mini hard seat valve, 1/8" orifice, 1/4" male NPT inlet, 1/4" female NPT outlet, ASTM A182 Gr. 316 material for all pressure containing components, FEPM O-ring packing, hard seat.

Note1: 32 Character limit laser marked.

## Contact information:

Axis Measurement  
Corporate: 112 N Ridge Road, Marble Falls, TX 78654  
Office: 830.693.7493  
Fax: 830.693.8614  
Web: [www.axismeasurement.com](http://www.axismeasurement.com)



## Representative/Distributor information:

The information contained herein is intended to be used as a guide to assist with product and service selection. While reasonable efforts have been made to ensure the accuracy and completeness of the content, RJ Machine Co. makes no representations as to the completeness or accuracy of the information contained herein. The customer is solely responsible for evaluating and selecting products and ensuring that all performance, safety and warning requirements are satisfied. RJ MACHINE CO. MAKES NO REPRESENTATIONS OR WARRANTIES, EITHER EXPRESS OR IMPLIED, INCLUDING WITHOUT LIMITATION ANY WARRANTIES OF MERCHANTABILITY OR FITNESS FOR A PARTICULAR PURPOSE WITH RESPECT TO THE INFORMATION SET FORTH HEREIN OR THE PRODUCT(S) TO WHICH THE INFORMATION REFERS. ACCORDINGLY, RJ MACHINE CO. SHALL NOT BE RESPONSIBLE FOR DAMAGES (OF ANY KIND OR NATURE, INCLUDING INCIDENTAL, INDIRECT, OR CONSEQUENTIAL DAMAGES) RESULTING FROM THE USE OF OR RELIANCE UPON THIS INFORMATION. Patents and Patents Pending in the U.S. and foreign countries. The products and specifications set forth in this brochure are subject to change without notice and RJ Machine Co. disclaims any and all liability for such changes. All third party trademarks including but not limited to logos, numbers and names referenced herein remain the property of their respective owners. Unless otherwise specifically identified as such, RJ Machine Co.'s use of third party trademarks does not indicate any relationship, sponsorship or endorsement between RJ Machine Co. and the owners of the trademarks. Any reference by RJ Machine Co. to third party trademarks is to identify the corresponding goods and shall be considered nominative fair use under applicable trademark law.

© 2025 by RJ Machine Co. All rights reserved. Material in this brochure or catalogue may not be reproduced in whole or in part, in any form, without written permission from the publisher.